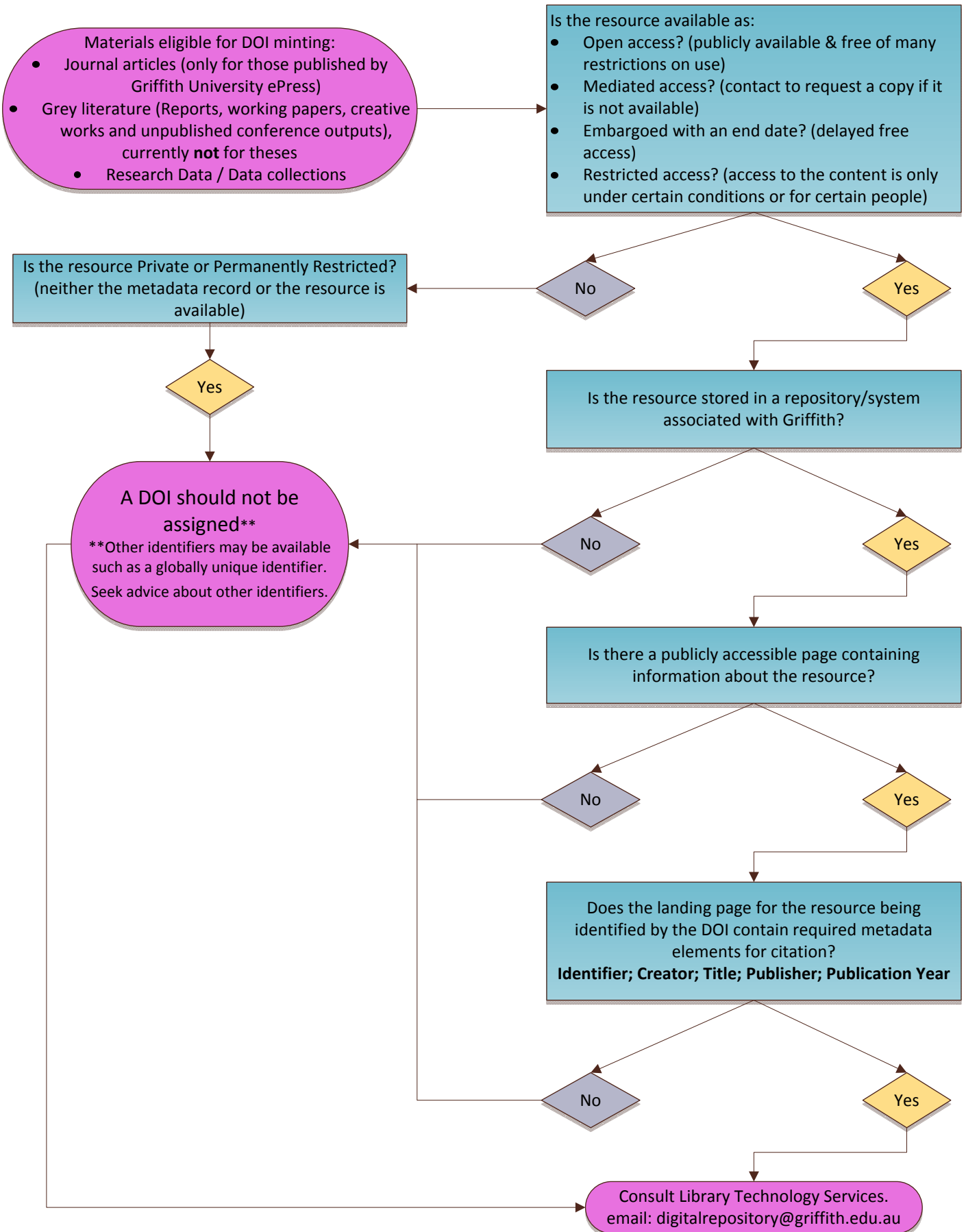


Identifier Decision Tree*

Is your resource eligible for a DOI?

The Digital Object Identifier (DOI) is a unique alphanumeric string assigned by the International DOI Foundation to identify content and provide a persistent link to that content including the location and associated metadata.



* This tool is to be used in conjunction with the *Digital Object Identifiers (DOIs): Management Guide (version 1.0)* by Griffith University. This is a high-level decision tree for INS staff consulting with researchers.