

**PHD AND RESEARCH DEGREES
STUDY GUIDE 2024**


GRIFFITH UNIVERSITY



Make it matter

Welcome to Griffith

As one of Australia's leading research universities, we're inspired and motivated by the pursuit of a better world in everything we do. When you choose Griffith, you're choosing a university working to answer society's greatest questions through pioneering research that makes a real difference.

At Griffith...

You'll work with the best

As a research student at Griffith, you'll have the opportunity to learn from researchers who are making significant contributions to contemporary challenges and global issues. You'll receive not only the best in research training but will have access to high-quality supervision and industry partnerships, and be part of a vibrant research culture.

As the home of four Australian University Teachers of the Year, and the winner of the national 2022 Higher Degree Research Supervision Award, Griffith has a long history of driving innovation and achievement in higher education.

Our teachers and researchers have been leaders in national awards and citations for over a decade*, and our students who learn in this environment are renowned among employers for their skills, experience and work ethic.

You'll join a leader in innovation

Griffith is one of Australia's leading research universities, as demonstrated by our most recent Excellence in Research for Australia ranking[^]. We rated well above world standard, achieving the highest possible result in 20 fields. Globally, we rank among the top 250 universities, demonstrating our ability to produce excellent, impactful research recognised by academic peers and employers worldwide.

* Based on Learning and Teaching results from the Department of Education.
[^] Excellence in Research for Australia (ERA) 2018.

We host more than 30 research centres and institutes and with more than 1,700 experts conducting research, we provide multidisciplinary and practical research supervision.

Your research matters

We're committed to providing high-quality research training and opportunities to explore collaborative, interdisciplinary and socially responsive research through your research degree.

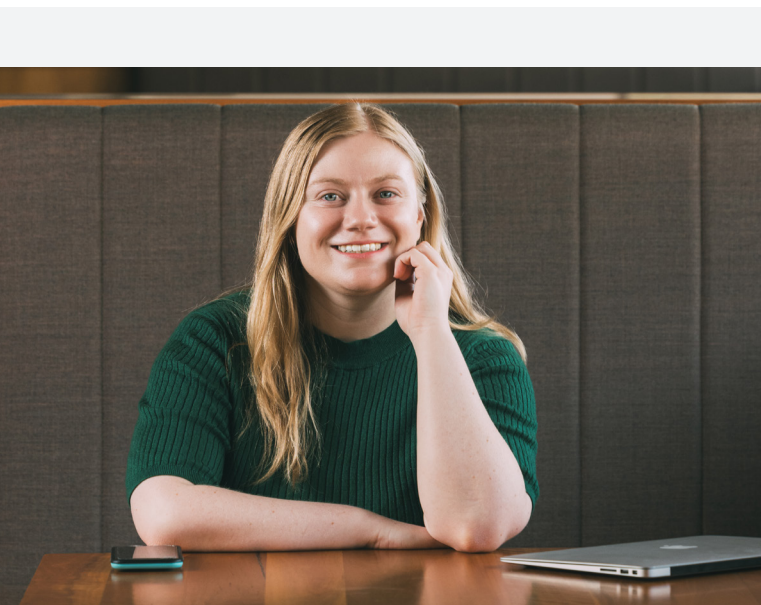
Our research spans a diverse range of academic fields and disciplines, including areas of strategic focus such as climate action, disability and inclusion, eliminating infectious disease, environment, human origins and transformative justice.

We're here for you

We'll support you through your research journey, from orientation to planning your research degree, research methodology, training workshops, and writing, publishing and presenting your research, as well as career development and making industry connections.

Our vision and values are built on inclusive practice, equity and maintaining a safe space for learning and teaching in meeting new challenges for our ever-changing world.

Discover the benefits of studying a research program at Griffith at griffith.edu.au/research-study



Kristin Magarry is part of a team delivering an innovative education initiative aiming to break the cycle of domestic violence. The project was designed to enhance children's empathy and self-regulation skills through engaging technology and enjoyable games. Kristin was awarded the competitive CSIRO Industry PhD Scholarship, and is conducting her PhD in partnership with Hyper Theory, a Brisbane-based creative animation studio. "I feel very strongly that having the ability to make authentic connections with others and lead with kindness is essential to a person's happiness and so, for me, this project is really about trying to build a kinder future for the next generation of kids," Kristin says. "I'm lucky to be able to learn and work with a great team of industry and academic experts from multiple disciplines."

Kristin Magarry

Doctor of Philosophy (PhD) candidate

Research with impact

Working in our world-class research centres, institutes and schools, our researchers are driven to better understand our world and improve people's lives.

At Griffith, it's our mission to create a better future for all. That's why we strive to engage in research that not only redefines the boundaries of what's possible but creates the most positive outcomes for the greatest number of people.

Research centres and institutes

Griffith is home to a range of world-class research centres, institutes and facilities dedicated to developing new knowledge. Most align with our four academic groups and their respective schools, and their cutting-edge research helps shape and inform our degree content. This ensures our students gain current, industry-relevant knowledge and skills while learning alongside people working to create a better future through their research.

Institutes

- Advanced Design and Prototyping Technologies Institute
- Australian Rivers Institute
- Cities Research Institute
- Creative Arts Research Institute
- Griffith Asia Institute
- Griffith Criminology Institute
- Griffith Institute for Drug Discovery
- Griffith Institute for Educational Research
- Griffith Institute for Tourism
- Institute for Glycomics
- Institute for Integrated and Intelligent Systems
- Menzies Health Institute Queensland

Centres

- Australian Research Centre for Human Evolution
- Centre for Catalysis and Clean Energy
- Centre for Governance and Public Policy
- Centre for Mental Health
- Centre for Planetary Health and Food Security
- Centre for Quantum Dynamics
- Centre for Work, Organisation and Wellbeing
- Griffith Centre for Social and Cultural Research
- Law Futures Centre
- Queensland Micro- and Nanotechnology Centre

In addition to our internally funded research, we host a range of externally funded centres creating impact in fields such as climate change adaptation, suicide research and prevention, neurobiology and coastal management.

For more information, see griffith.edu.au/research/centres-institutes

Griffith Beacons

Griffith Beacons are highly collaborative interdisciplinary research initiatives helping to define and address issues of great significance. We currently have three Beacons:

- Climate Action
- Inclusive Futures: Reimagining Disability
- Disrupting Violence

Industry connections

As a student, you'll have the chance to undertake a collaborative research project with one of our industry partners through a dedicated scholarship or internship.

With fully funded, co-funded and other options available, the Griffith Industry PhD Scholarships Scheme provides an ideal way to build your professional and personal networks alongside highly desirable skill sets.

These scholarships are a prime opportunity to work with one of our partners in government, private industry or the not-for-profit sector. You'll learn to thrive in professional and academic environments as you exercise your capacity for innovation and expand your range of professional pathways.

We also offer Block Research Internships, which are an excellent opportunity to undertake a short-term, bespoke research project in a professional setting to develop your translational skills and networks.

For more, see griffith.edu.au/research-study/scholarships

Indigenous Research Unit

Griffith's Indigenous Research Unit (IRU) comprises people, partnerships and resources dedicated to developing and supporting Indigenous research. IRU advocates for Indigenous-appropriate approaches to research and is committed to creating an environment that fosters the sharing of Indigenous research and knowledge and develops the research capacity of academics and research students.

For details, see griffith.edu.au/indigenousresearch

Values-led action

At Griffith, our research is led by our strong values. We've launched research programs dedicated to addressing the most significant sociocultural issues of our time, including climate action, violence and disability access.

These programs build on our record of global leadership in these fields of research by partnering with governments and key organisations to help communities, industries and the public sector respond to their challenges.

For more information about research at Griffith, see griffith.edu.au/research

Applying for a PhD or research degree

Work through these steps to successfully apply for a Griffith research program.

1. Choose your research degree

What is a research degree?

A research degree is a postgraduate degree that primarily involves completing a supervised project of original research. Completing a research degree is your opportunity to make a substantial contribution to, and develop a critical understanding of, a specific discipline or area of professional practice.

Doctor of Philosophy (PhD)

As the highest level of education achievable, the Doctor of Philosophy (PhD) is our premier research training degree.

To be awarded a PhD, you'll develop a thesis, prepared under supervision, that makes an original, significant and extensive contribution to knowledge and understanding in your field of study. Your thesis will be judged by independent experts in accordance with accepted contemporary international standards.

Griffith also offers a Doctor of Medicine/Doctor of Philosophy combined pathway, and a Doctor of Philosophy by Prior Publication higher doctorate degree for established researchers.

Professional doctorates

A professional doctorate integrates professional and research work, including a supervised research project and an advanced program of study related to your practitioner settings and responsibilities.

The degree will prepare you for leadership in an area of specialised practice in either your profession or other applied fields.

We offer the following professional doctorates:

- Doctor of Philosophy in Clinical Psychology
- Doctor of Education
- Doctor of Musical Arts
- Doctor of Visual Arts

Master of Philosophy

The Master of Philosophy (MPhil) is awarded for a thesis, drafted under supervision, which presents original research and demonstrates both knowledge of a research topic and discipline. It is shorter than a PhD and is available across all schools and disciplines.

We offer the following specialist masters by research degrees:

- Master of Arts Research
- Master of Design Research
- Master of Education and Professional Studies Research
- Master of Medical Research
- Master of Music Research
- Master of Science
- Master of Visual Arts Research

These degrees are also pathway programs to a PhD.

Entry requirements and pathways

To be ready to undertake a doctoral degree at Griffith, you must have completed a significant research component in your most recent prior qualification. This is normally equivalent to at least one full-time semester (40 credit points) of research.

If you have relevant experience—whether professional, personal or through prior research—you can make a case to do your PhD without meeting prerequisites. To do so, include a statement with your online application. Find out more at griffith.edu.au/hdr-equivalent-qualifications

Entry requirements vary for masters by research degrees. If you don't meet the direct requirements for a research degree, you may consider a Graduate Diploma of Research Studies, which provides an alternative pathway into such programs. You'll undertake coursework and a dissertation in the discipline relevant to your research area of interest.

To check your eligibility for your chosen degree, visit griffith.edu.au/degrees

2. Find and connect with a research supervisor or project

Depending on your area of study and research, you may be starting at the very beginning with a unique proposal, or you may be able to join an established research project.

If considering your own proposal, you are best to firstly identify a potential supervisor who works in your area of interest through the Griffith Experts database. You'll be able to review academic profiles, academic backgrounds, previous publications and current projects, to help you find a potential supervisor. Once found, you will need to contact them directly via email to discuss your research proposal. Visit experts.griffith.edu.au for more information.

Griffith also has a number of established research projects, to which you can apply directly. These are available particularly in areas of science and health research.

Find out more at griffith.edu.au/research-study

3. Develop your research proposal

Your research question will provide the key research focus for the full duration of your degree, so it is important that you consult a wide variety of resources and select a topic you feel highly motivated to investigate.

Narrow your focus to a single topic. Once you connect with your prospective supervisor, it is important that you seek their input and advice on your research proposal. If you are joining an established project, your prospective supervisor will help you prepare your proposal. Where applicable, this may also be an appropriate time to seek a connection with an industry partner or external organisation who could collaborate on your research, such as your employer. They will also provide input to your proposal.

For more information, visit griffith.edu.au/research-study

4. Scholarships

Griffith research scholarships are available to support your research across all disciplines, and can cover tuition fees, overseas student health cover, living allowances paid as stipends and relocation allowances.

We have scholarships available through both the Griffith Industry PhD Scholarship Scheme and on a project basis.

Applications are considered through a competitive, merit-based selection process, with scholarships awarded throughout the year. If your application is successful, you can commence at the next available intake.

For more information, including application deadlines, visit griffith.edu.au/research-study

5. Submit your application online

Griffith's online admission website is a safe, secure way to:

1. apply online for any research program and/or research scholarship
2. save and change your application details as needed before submission
3. track your submitted application.

To apply online, visit griffith.edu.au/research-study

Closing dates for applications vary between degrees. To check the closing date for your chosen degree, visit griffith.edu.au/degrees

If you're an international applicant, you can apply directly or through a registered Griffith agent. Applicants from certain countries need to apply through a registered agent. Visit griffith.edu.au/apply/research-study

Intake dates

Griffith offers four research intake dates each year. If your degree includes coursework, please also check the trimester start dates.

2024

Intake 1: 26 February

Intake 2: 22 April

Intake 3: 8 July

Intake 4: 14 October

Application assessment and outcome

Your online application will be reviewed by our team of academic staff once all required documentation has been received, including at least one referee report from your academic referees.

If you applied online, you can log in to track the status of your application.

If you applied through a registered Griffith agent, you can contact your agent to check the status of your application.

You will be advised by email of the outcome of your application for admission (and scholarship, if you applied).

The average assessment period for a complete admission application is six to eight weeks.



Remote study

If you're not planning to relocate to the Brisbane/Gold Coast region to undertake your program, you can apply to pursue your research study predominantly away from the University.

You will need to provide a statement with your application that addresses available resources and facilities at the remote location, a schedule of contact with your supervisor, and a program of visits to the University (as may be required for your research project).

For a full list of considerations for remote study, see griffith.edu.au/research-study

Frequently asked questions

Should I choose a coursework or research degree?

The type of study you undertake will depend on what you are trying to achieve.

Choose coursework if you want to advance your career or change career direction.

A postgraduate coursework degree (such as a graduate certificate, graduate diploma or masters by coursework) builds on the skills and knowledge you've gained through professional experience and previous study. You'll study courses that may involve lectures and tutorials, laboratory practice, or fieldwork.

Choose a research degree if you want to advance your career, create change and add to human knowledge and understanding, or change career direction.

A research degree, such as a Doctor of Philosophy (PhD) or Master of Philosophy (MPhil), will prepare you for a research career. You'll complete a significant piece of research under supervision.

You can also choose to undertake a masters by research degree, which is a specialist degree in areas such as arts, education, design, medicine and music that combines coursework with professional and/or artistic practice.

What's the difference between an Honours degree and a PhD?

A bachelor degree with Honours is a level 8 qualification on the Australian Qualifications Framework (AQF); a PhD is level 10 and is the highest qualification recognised by AQF.

In terms of workload, an Honours degree generally combines one trimester of research with one trimester of coursework over one year, while a PhD is usually pure research undertaken over three or four years.

It is comparable to working full-time in that you can work from 9am to 5pm on your project and are not bound by the trimester system as you would be as an Honours student. In that sense, Honours degrees can be less intense, but are no less challenging or rewarding.



Can I work while completing a research degree?

Full-time enrolment for research students requires a commitment of the equivalent of a standard five-day work week (i.e., 9am to 5pm, Monday to Friday, 48 weeks a year), with the actual pattern of study to be negotiated with your supervisory team.

Students can undertake employment during their study as long as it does not impact on their ability to maintain their study commitment, or impact the progression and completion of the research.

If your employment is directly related to your research, this will count towards your study commitment. This may be the case, for example, where you are an industry professional who is being supported by your employer to undertake a research degree.

International students also need to abide by the employment limitations outlined in the conditions of their visa.

Scholarship holders and sponsored students should consult the conditions associated with their awards and sponsorships to check if there are any special conditions relating to employment.

How long does a PhD or research masters usually take to complete?

Typically, a doctoral degree lasts three to four years (240–320 credit points), while a masters degree (research) can take one to two years (80–160CP).

If you are awarded a research scholarship, this is normally for a three-year duration, with a possible six-month extension.

What's the quickest path from an undergraduate degree to a PhD?

Generally, the quickest pathway to a PhD after a bachelor degree is to complete an Honours degree with first class or class 2A Honours.

However, we also provide other pathways and opportunities to demonstrate eligibility for a PhD program.

Visit griffith.edu.au/research-study to view Griffith's pathway options.

How much does it cost to complete a research degree?

Students from Australia and New Zealand, or those with permanent residency visas for Australia, will have their tuition fees offset by the Australian Government Research Training Program (RTP).

This means your research training is free, although there is a student services and amenities fee payable for each year of your enrolment.

If you are an international student, you will need to pay tuition fees for the duration of your research study unless you have been granted a scholarship or sponsorship that covers these fees. You will also need to pay for overseas student health cover for the duration of your studies in Australia.



Translating research into action

Griffith PhD candidate Krishanthan Gnanapragasam is using his studies to address a major issue in his home country of Sri Lanka—the overfishing of our oceans. “Some experts predict that we could see a fishless ocean in less than 50 years,” he says. “So I was really interested to find what is actually happening and what could be done to mitigate these issues.” Analysing over 40 years of data, Krishanthan discovered a complex system of factors influencing the numbers of fish in the sea, from the number of boats on the water to the practice of fish bombing, which uses explosives to kill large numbers of fish in one fell swoop. “The problem is, since coastal fisheries are driven by small communities, we need to find sustainable solutions without driving them into poverty,” he says. “So, I’m also working on developing a mobile app to mitigate this issue, which could be used by fishermen communities themselves to safeguard the ocean for future generations.”

Have questions? We're here to help.

Talk to us

Phone: +61 (0)7 3735 3817

Email: hdr-enquiry@griffith.edu.au

Disclaimer

Griffith has used reasonable endeavours to ensure that the information contained in this publication is accurate but this information may be subject to corrections or changes without notice. Griffith reserves the right to alter, change, or discontinue programs and Griffith-funded scholarships without notice. Griffith assumes no responsibility for the information provided by third parties. The publication of a program or scholarship in this document does not create an obligation on the part of Griffith to deliver the program or offer the scholarship in any given year. It is the responsibility of students to check and confirm all general, program and scholarship information prior to application and enrolment. In particular, program or scholarship offerings, duration, commencement, campus location, fees, and entry requirements need to be checked and confirmed. All costs, fees and scholarship figures contained in this publication are in Australian dollars (AU\$). Applications and enrolments are subject to Griffith's Privacy Policy, which is available online at griffith.edu.au/privacy-plan

ESOS Compliance

The provision of education services to international students by Australian educational institutions is governed by the Education Services for Overseas Students (ESOS) Act 2000 and the Education Services for Overseas Students (ESOS) Regulations 2001 under this Act. Griffith, in providing education services to overseas students, complies with the National Code of Practice 2007 through the Department of Education. Visit internationaleducation.gov.au and education.gov.au