

# How to...

## Run Revit from Turbo.net

### Introduction

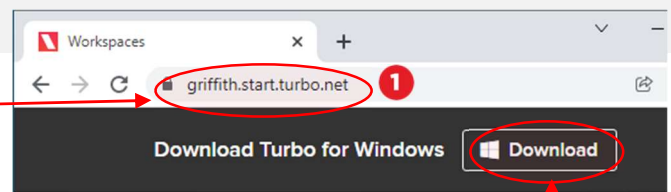
Turbo.net allows you to access your course software from your personal computer. Revit is a tool for your coursework and requires both **Turbo.net** and **Griffith VPN** to be installed to work on your PC or Windows Virtual Machine. It is NOT supported on Mac systems.

Please note that some application interfaces will differ to what is shown in this guide. There will be several pop-up messages about confirmation or access through this process. They are safe to accept.

**NOTE for M1 Macs;** Bootcamp and virtual machines running x64 Windows are not officially supported on M1 chip Macs and running applications in local modes from Turbo.net is not supported.

### Step 1: Download and install Turbo.net

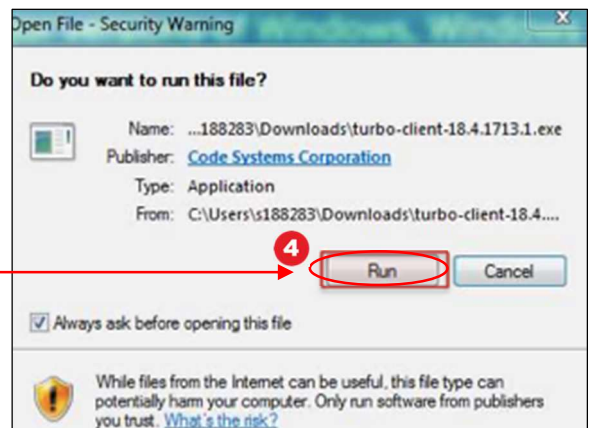
- 1 Login at <https://griffith.start.turbo.net>.



- 2 Select the **Download** button at the top of the portal.

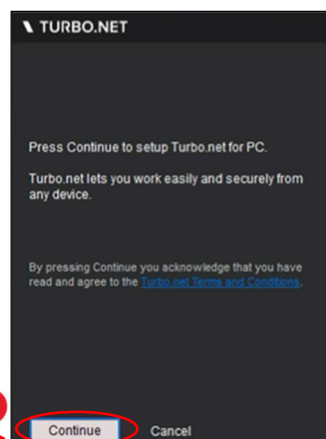
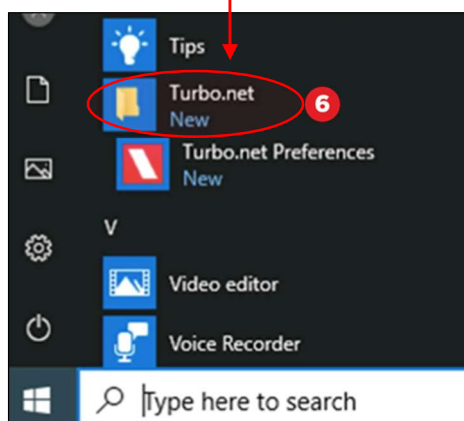
- 3 Once the download completes, go to your **Downloads** folder and double-click the **Turbo-client.exe** file.

- 4 The **Open File – Security Warning** prompt will appear. Select **Run**.



- 5 The **Turbo.net installation page** will appear. Select **Continue**.

- 6 If **Turbo.net** has installed properly, you will see it in the start menu.



## Step 2: Install Griffith VPN

- This step is only required if you are accessing the software on a computer that is not on the fixed Griffith or wireless network, e.g. if you are at home.

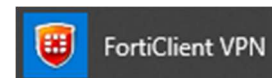
- 1 Go to the [Griffith VPN webpage](#) for instructions on how to install and configure Griffith VPN on your computer.



## Step 3: Set up and run Revit in local mode

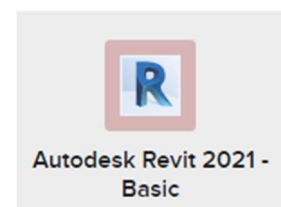
- Local mode downloads a package to your computer and then only accesses Griffith to verify licenses. The main package only needs to be downloaded once. Please note to increase successful downloads, it is best not to continue in another browser until after the download is complete.
- A Windows 10 PC or VM with an adequate video card and at least 15 gigabytes of disk space are required to run Revit. Revit must run from the Turbo.net portal each time you wish to use it.

- 1 Ensure that you are logged into Griffith VPN

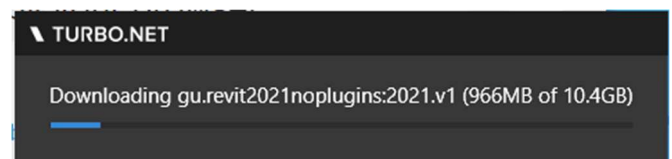


- 2 Log in to Turbo.net at <https://griffith.start.turbo.net/> using your Griffith credentials.

- 3 Open the General folder (if presented with options) and click on the **Revit icon**.



- 4 Accept the prompts to start Revit. It will download just the first time you start Revit.



- 5 Once downloaded Revit will start.

## Step 4: Remove Revit

- Revit can be removed from your PC to free up disk space.

1 Go the **Start Menu** and select the **Turbo.net Preferences** application.

2 Remove the application of your choice by selecting **Clear** or remove all applications at once by selecting **Clear Cache**.

