

# 2019-2020



## CAIPSDCC REPORT

Collaborative Australia-Indonesia Program on  
Sustainable Development and Climate Change

Griffith University and Universitas Indonesia

# Collaborative Australia-Indonesia Program on Sustainable Development and Climate Change (CAIPSDCC)

## 2019-2020 REPORT

Prepared by Lia Zakiyyah and Hendika Gunawan (CAIPSDCC Secretariat)

January 2021



# Contents

- Introduction..... 1
  
- CAIPSDCC Program..... 3
  - A. High-level dialogue on climate diplomacy..... 3
  
  - B. Webinar series on sustainable development and climate change ..... 5
    - Theme 1: Planetary and human health against the pandemic..... 7
    - Theme 2: Sustainable landscape management..... 8
    - Theme 3: Increasing resilience of small islands in Eastern Indonesia.....12
    - Theme 4: Sustainable and low carbon development as pandemic recovery.....15
  
  - C. Research collaboration.....18
    - Key projects.....19
      - 1. The impact of climate change on planetary and human health .....19
      - 2. Sustainable landscape management .....19
      - 3. Increasing resilience in small islands in Eastern Indonesia .....19
      - 4. Transition to a low-carbon economy.....19
  
  - D. Communication.....20
    - Newsletter .....20





# Introduction

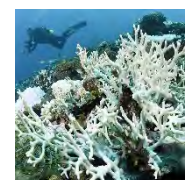
The Collaborative Australia–Indonesia Program on Sustainable Development and Climate Change (CAIPSDCC) is a partnership between Griffith University (Australia) and Universitas Indonesia, Jakarta. An inclusive and multistakeholder framework, CAIPSDCC actively engages other key institutions, including Hasanuddin University, Makassar as well as Lingkar Temu Kabupaten Lestari - LTKL (Sustainable District Association). Launched in Brisbane in August 2018 (and in Jakarta in November 2018), CAIPSDCC aims to connect existing and new research and capacity building projects specifically related to sustainable development and climate change. The program provides a valuable platform for stakeholders—across academia, government, industry and community—from the two countries and beyond to discuss ways to enhance sustainable development and climate change in their own nation’s and in the region. This report shares notable activities and progress achieved over the past year.



*Launching CAIPSDCC (November 2018), CAIPSDCC Team from Universitas Indonesia and Griffith University together with representatives from the Australian Embassy in Indonesia, Coordinating Ministry of Economic Affairs, and Ministry of National Development Planning; Ministry of Environment and Forestry.*



*Jakarta Dialogue (August 2019), CAIPSDCC Team from Universitas Indonesia, Griffith University, and Universitas Hasanuddin together with Representatives from the Australian Embassy in Indonesia; Ministry of Environment and Forestry; Ministry of Foreign Affairs; Local Government; and Private Company on Infrastructure and Renewable Energy.*







*Sustainable Fashion Show as part of the Jakarta Dialogue, August, 2019.*



1. CAIPSDCC team walk through Bantimuring - Bulusaraung National Park, South Sulawesi, 24 August 2019.
2. CAIPSDCC team at Griffith University's Gold Coast campus.
3. Sustainable fashion show at the high-level dialogue, 21 August 2019.
4. Coordination meeting at Universitas Indonesia, 20 August 2019.
5. Coordination meeting on Phinisi boat 23 August 2019.
6. Follow up meeting held and Universitas Indonesia, 22 August 2019.
7. Stakeholders meeting at UNHAS, 23 August 2019.
8. High-level dialogue, 21 August 2019.



# CAIPSDCC Program

The collaborative program has four key components: i) high level dialogues; ii) research collaboration on climate change and sustainable development; iii) capacity building; and iv) student mobility. The following sections will share some updates for activities carried out between December 2019 until December 2020. In 2020, COVID-19 related restrictions limited face-to-face activity. In response, the CAIPSDCC Program moved to online delivery to foster engagement, reach and audience participation.

## A. High-level dialogue on climate diplomacy

CAIPSDCC organised a virtual dialogue on climate diplomacy on August 24, 2020, with the title: “Strengthening Cooperation and Lifting Ambition on Sustainable Development and Climate Change Beyond COVID-19”. The High-level dialogue was attended by several high-level public officials and practitioners, such as Mr Alue Dohong, the Vice Minister of Environment and Forestry Indonesia and Mr Jamie Ibister, the Australian Ambassador for the Environment.



*Virtual High-Level Dialogue (August 2020) CAIPSDCC Team from Universitas Indonesia and Griffith University together with Mr Alue Dohong, Vice Minister of Environment and Forestry Indonesia, Mr Jamie Ibister, the Australian Ambassador for the Environment, as well as other prominent diplomacy actors from Australia and Indonesia.*



The dialogue focused on the unprecedented social, economic, and environmental impacts of the COVID-19 pandemic as underscoring the urgency for global cooperation towards human and planetary wellbeing. CAIPSDCC initiated a high-level dialogue, bringing together key stakeholders from the two countries to enhance discussion to explore further collaborations.

Australia and Indonesia can demonstrate leadership in lifting global ambitions for environmental preservation and climate change action, while also minimising the potential of further pandemic outbreaks. The COVID-19 outbreak has revealed the precarious relationship that exists between humans and their environment. While primary policy emphasis has been placed on ensuring human health and safety, we should not dismiss the importance of bearing down through coordinated and cooperative efforts—within the region and globally—to restore and preserve planetary health.

A policy brief capturing the insights from the high-level dialogue is currently being finalised and will be published in the first quarter of 2021. Some notable points include the need for both nations to work together to:

1. Seek ways to maintain and develop policy dialogue and research collaborations between the two countries.
2. Champion inclusive, sustainable policy priorities and outcomes.
3. Develop opportunities for diplomatic partnership in leading agendas.
4. Invest in people-to-people connections—including through 'virtual' options.

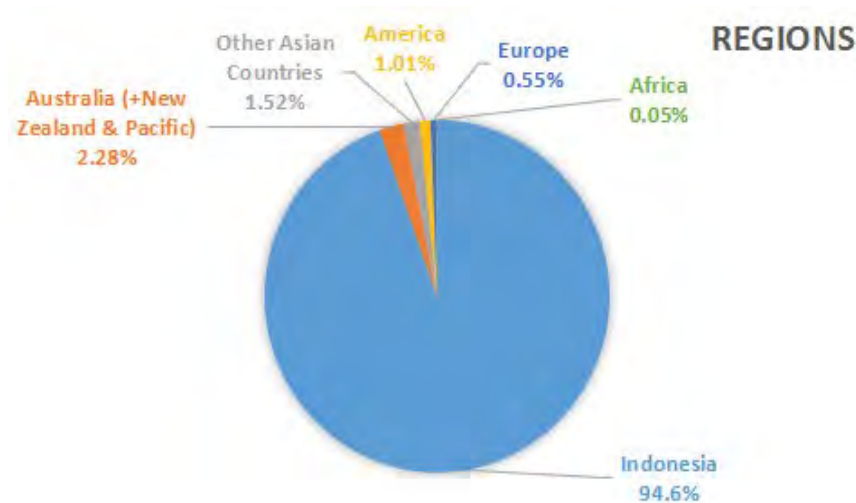


## B. Webinar series on sustainable development and climate change

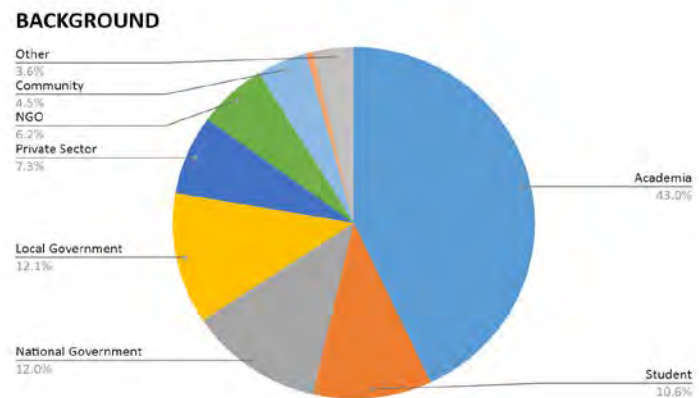
From May to August 2020, the CAIPSDCC Secretariat (established in January 2019) curated a series of 14 webinars on a weekly basis. Addressing key topics within the broad research framework of 'climate resilient development pathways' the webinars showcased the depth and breadth of expertise within the CAIPSDCC network. Overall, the webinars engaged a total of **7,701** participants via Zoom, with **6,679** of those being unique participants from across 576 cities in 35 countries. Participants came from a range of backgrounds including government and policy, academia, industry and community. Almost all webinars are available to be viewed on the YouTube channels of [Humas FMIPA Universitas Indonesia](#) and [Griffith Asia Institute](#). As of December 11, 2020, we had reached more than **15,921 YouTube viewers**.

Provided below are graphs containing the information of the participants:

1. The following are the 5 highest percentages of participants based on their country of origin: **Indonesia (94.60%)**, **Australia (2.20%)**, **United States of America (0.90%)**, **India (0.38%)**, and the **United Kingdom (0.32%)**. The following pie chart shows the percentage based on the region:

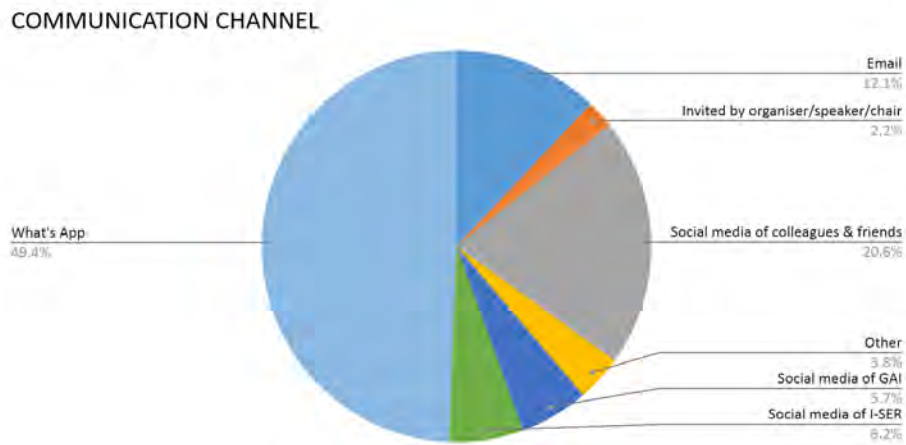


2. The following pie chart shows the percentage of the webinar participants' professional background:





3. The following pie chart shows the percentage of how the participants received information regarding the webinars:



The webinars focused on four themes:

1. Planetary and Human Health Against the Pandemic.
2. Sustainable Landscape Management.
3. Increasing Resilience Small Islands in Eastern Indonesia.
4. Sustainable and Low Carbon Development as Pandemic Recovery.

All webinar recordings may be accessed at <https://www.griffith.edu.au/asia-institute/events>. The minutes of all webinars may be accessed at <https://tinyurl.com/caipsdccwm2020>.



*CAIPSDCC team and partners.*



## Theme 1: Planetary and human health against the pandemic

Webinar 1 | Tuesday 19 May 2020

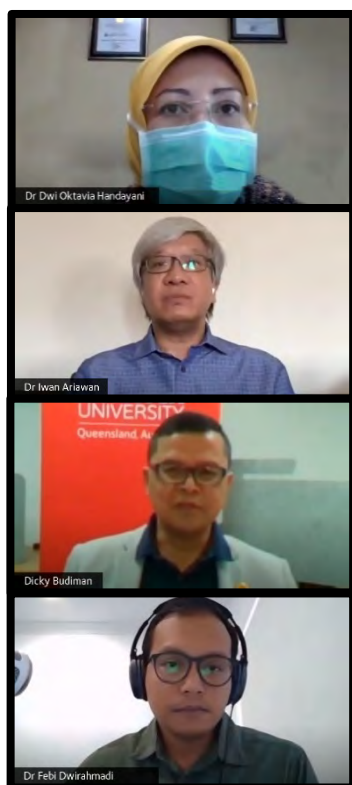
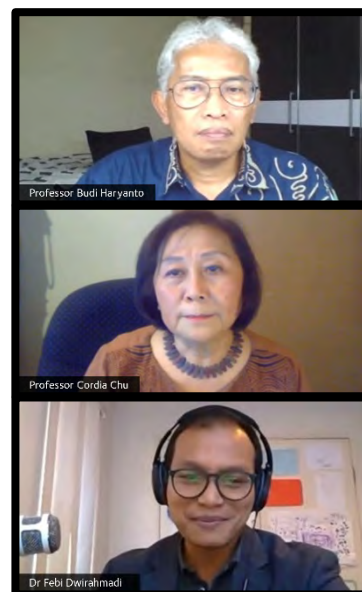
COVID-19: Updates from Indonesia, Australia, and beyond

This webinar was organised on Tuesday, 19 May 2020, with speakers as follows:

- Professor Budi Haryanto, Professor in Environmental Health Science, Faculty of Public Health, Universitas Indonesia;
- Professor Cordia Chu, Director of the Centre for Environment and Population Health (CEPH), Griffith University; and
- Dr Febi Dwirahmadi, Lecturer in Global Health at Griffith University's School of Medicine as the Session Chair.

Recording: <https://tinyurl.com/caipsdccw1>

Other materials: <https://tinyurl.com/caipsdccm1>



Webinar 2 | Thursday 28 May 2020

COVID-19: When will it be safe to loosen the restrictions?

The second webinar was conducted on Thursday, 28 May. After months of social and movement restrictions, Indonesia and Australia started to develop a plan and strategy to gradually reopen the economy. As the world moves toward the "new normal" to ease the economic suffering, SARS-CoV-2 remains present. This webinar addressed the question: would this really be a safe time to loosen the restrictions?

Chaired by Dr Febi Dwirahmadi, Lecturer in Global Health at Griffith University's School of Medicine, speakers included:

- Dr Dwi Oktavia Handayani, MEpid, Head of Disease Prevention and Control Division, DKI Jakarta Provincial Health Office;
- Dr Iwan Ariawan, Department of Biostatistics and Population Studies, Faculty of Public Health, Universitas Indonesia; and
- Dicky Budiman MSc PH, PhD candidate, Centre for Environment and Population Health (CEPH), Griffith University, Australia. This webinar was

Recording: <https://tinyurl.com/caipsdccw2>

Other materials: <https://tinyurl.com/caipsdccm2>





### Webinar 3 | Thursday 4 June 2020

The new normal di era COVID-19: Bagaimana kesiapan daerah? (*The new normal in the COVID-19 era: How is the readiness of the region?*)

This webinar addressed key questions: What is the meaning of the new normal? What does it mean for the community? How is the readiness of the local government? Chaired by Dr Febi Dwirahmadi, opening remarks were provided by Professor Budi Haryanto, Professor of Environmental Health Sciences, Faculty of Public Health, Universitas Indonesia. Panel speakers included:

- Professor Dr Ir H Nelson Pomalingo, MPd, Regent of Gorontalo Regency;
- Dr Ede Surya Darmawan, SKM, MDM, Head of the FKM UI Community Health Services and Services Institute, and Chairman of the Indonesian Public Health Expert Association;
- Ms Gita Syahrani, Executive Director Sustainable District Association (LTKL);
- Dr Erna Witoelar, Co-Founder of Partnership ID, CAIPSDCC Advisor also provided a review of the issues discussed.

Recording: <https://tinyurl.com/caipsdcccw3> (Indonesian)

Other materials: <https://tinyurl.com/caipsdcccw3>

### Theme 2: Sustainable landscape management

#### Webinar 4 | Thursday 11 June 2020

Global perspectives on sustainable landscape management in times of COVID-19

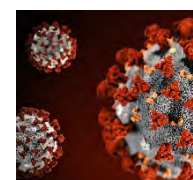
Panelists explored the questions: Is there a connection between deforestation and COVID-19? What is the role of primary forest protection in mitigating carbon emissions and avoiding pandemics? People might over exploit extractive sectors (world forest) as a means to recover from the economic impact of COVID-19. What is the magnitude of this threat? Will a COVID-19 pandemic drive more deforestation? How can we ensure that we can keep our forest and pursue a sustainable economic recovery from COVID-19? How can the incorporation of the carbon mapping and land-use plan into the one map policy help protect the forest?

The webinar was chaired by Maggie Muurmans, Researcher and Ph.D. candidate at Griffith University with opening remarks by Professor Abdul Haris, Vice-Rector on Research and Innovation, Universitas Indonesia. Speakers included:

- Professor Jatna Supriatna, Director of Sustainable Earth and Resources, Universitas Indonesia;
- Professor Brendan Mackey, Director of Griffith Climate Change Response Program, Griffith University; and
- Fitriani Adriansyah, Chairman of Executive Board of Inisiatif Dagang Hijau. The webinar was opened by Professor Abdul Haris, Vice-Rector on Research and Innovation, Universitas Indonesia.

Recording: <https://tinyurl.com/caipsdcccw4>.

Other material: <https://tinyurl.com/caipsdcccw4>





Webinar 5 | Thursday 18 June 2020

Wildlife trade, zoonotic disease and pandemic

Discussion addressed the following questions: How could diseases be transmitted from wild animals to humans? How do wildlife trade and wet markets increase the potential of the emergence of zoonotic diseases? How could this lead to an epidemic or a pandemic? What could we do to prevent this from happening again in the future? How does the way we are managing our landscapes affect the increase in zoonotic diseases?

Chaired by Maggie Muurmans, Researcher at Griffith University, with opening remarks delivered by Professor Jatna Supriatna, Director of the Institute for Sustainable Earth and Resources (I-SER), Universitas Indonesia, the panel included:

- Professor Hamish McCallum, Head of Griffith Wildlife Disease Ecology Group, Griffith School of Environment, Griffith University;
- Dr Noviar Andayani, Country Director of Wildlife Conservation Society (WCS) Indonesia Program and Lecturer in Biology Studies, Universitas Indonesia;
- Dr Esther Onyango, Research Fellow, Planetary Health Environmental Futures Research Institute, Griffith University.

Recording: <https://tinyurl.com/caipsdcccw5>

Other material: <https://tinyurl.com/caipsdcccw5>





Webinar 6 | Thursday 25 June 2020

Ecotourism: Sustainable economic recovery from the pandemic

The webinar addressed the following questions: What are the challenges and opportunities of ecotourism in the post-pandemic era? How can we use the momentum of "the new normal" to develop ecotourism? Can it be used as a robust economic recovery source for the communities and local government? Can it be an alternative for communities whom livelihoods depend on exploiting natural resources unsustainably? Are there examples of ecotourism sites in Indonesia and Australia that we can learn from—both the successful ones and the ones who face a lot of challenges?

Chaired by Iben Yuzenho Ismarson, Founder of Sebumi, with opening remarks from Dr Rokhmatuloh, Dean Faculty of Mathematics and Natural Sciences, Universitas Indonesia; and Dr Emma Whittlesea, Senior Research Fellow, Griffith Institute for Tourism, the panel speakers included:

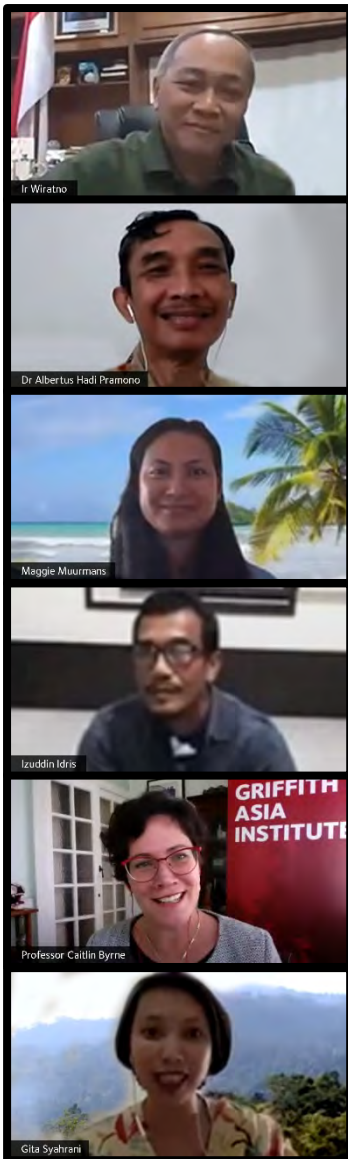
- Dr Frans Teguh, Acting Deputy and Senior Advisor for Sustainable Tourism and Conservation Ministry of Tourism and Creative Economy;
- Daniel Gschwind, Chief Executive Officer of the Queensland Tourism Industry Council;
- Ary Suhandi, Founder and Director of the Indonesian Ecotourism Network (INDECON);
- Dr Duan Biggs, Senior Research Fellow, Environmental Futures Research Institute, Griffith University.

Recording: <https://tinyurl.com/caipsdccw6>

Other material: <https://tinyurl.com/caipsdccm6>







## Webinar 7 | Thursday 2 July 2020

The role of community to promote sustainable landscape management in times of COVID-19

In this webinar topics explored were: How to include communities to achieve? What is the current situation of our landscape amid the pandemic? How could sustainable landscape management be truly implemented at the community level? What is the role of the community itself in promoting this approach? How can academia, civil society organization, and government and community better pursue sustainability through collective actions?

Chaired by Gita Syahrani, Executive Director to the Secretariat of Sustainable District Association or Lingkar Temu Kabupaten Lestari (LTKL), with opening remarks from Professor Caitlin Byrne, Director of the Griffith Asia Institute (GAI), Griffith University, panel speakers included:

- Ir Wiratno, MSc, Director General of Natural Resources and Ecosystem Conservation, Ministry of Environment and Forestry of Indonesia;
- Dr Albertus Hadi Pramono, Coordinator of Community Landholders Center I-SER, Universitas Indonesia;
- Maggie Muurmans, Researcher and PhD candidate, Griffith University;
- Izuddin Idris, Practitioner, Center for Sustainable Agriculture Excellence/Pusat Unggulan Perkebunan Berkelanjutan (PUPL) Aceh Tamiang.

Recording: <https://tinyurl.com/caipsdccw7>

Other material: <https://tinyurl.com/caipsdccm7>





## Theme 3: Increasing resilience of small islands in Eastern Indonesia

Webinar 8 | Thursday 9 July 2020

Risks and resilience of small islands: Pandemics, climate, and other crises

The 8th webinar in the series was conducted to address the following topics: Geographically surrounded and isolated by the sea, what are the challenges that the small island inhabitants face? What does it mean to be resilient and how could a small island be resilient in the face of multiple crises?

Chaired by Asri A Dwiyahreni, Senior Researcher, Research Center for Climate Change – Universitas Indonesia (RCCC–UI), with opening remarks from Professor Caitlin Byrne, Director of the Griffith Asia Institute (GAI), Griffith University, panel speakers included:

- Professor Brendan Mackey, Director, Griffith Climate Change Response Program (GCRP), Griffith University;
- Professor Jan Sopaheluwakan, Coordinator, Research Center for Earth Sciences and Disaster, Institute for Sustainable Earth and Resources (I–SER), Universitas Indonesia;
- Professor Jamaluddin Jompa, Dean of the Graduate School of Hasanuddin University, and Advisor on Marine Ecology to the Minister of Marine Affairs and Fisheries of Indonesia.



Recording: <https://tinyurl.com/caipsdccw8>

Other material: <https://tinyurl.com/caipsdccm8>



Webinar 9 | Thursday 16 July 2020

Impacts on ecosystem and other biophysical processes in small islands from the pandemics and the climate crisis

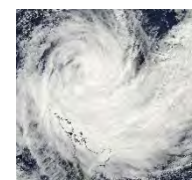
The webinar addressed the following questions: What is the condition of our marine and coastal ecosystem during the climate crisis and the pandemic? Why is it important for the community to protect biodiversity and the ecosystem? What is the role of biodiversity in supporting the livelihood of the community? What needs to be done to ensure a resilient small island ecosystem and community in the face of the climate crisis and the pandemic?

Chaired by Dr Intan Suci Nurhati, Researcher, Research Center for Oceanography – LIPI (Indonesian Institute of Sciences) with opening remarks delivered by Amanda Katili Niode PhD, Manager, Climate Reality Indonesia, and Advisor CAIPSDCC, panel speakers included:

- Andreas A. Hutahaean Ph.D., Deputy Director for Marine Conservation and Small Islands Utilization at the Coordinating Ministry for Maritime and Investment Affairs of the Republic of Indonesia;
- Dr Augy Syahailatua, Director of Research Center for Oceanography – LIPI (Indonesian Institute of Sciences);
- Associate Professor Guillermo Diaz–Pulido, School of Environment and Science, Griffith University.

Recording: <https://tinyurl.com/caipsdccw9>

Other material: <https://tinyurl.com/caipsdccm9>





Webinar 10 | Thursday 23 July 2020

Community participation, institutions, and multi-stakeholder platforms in building small island resilience

The tenth webinar focused on the following questions: What is the role of each small island stakeholder, from the community, civil society organization, government, and other institutions in building a small island's resilience? How could each stakeholder work together to achieve sustainability? Is there already a strategy or program which could be implemented, replicated, and developed further?

Chaired by Dr Nadiarti Nurdin Kadir, Secretary, Center of Excellence for Marine Resilience and Sustainable Development (MarSave), Universitas Hasanuddin, with opening remarks from Professor Rachmat Witoelar, Advisor of I-SER, Patron CAIPSDCC, Former President's Special Envoy on Climate Change, panel speakers included:

- Ir Hugua, Member of Parliament, The House of Representatives of the Republic of Indonesia (DPR RI);
- Professor Wahyoe Soepri Hantoro, Research Fellow Professor, University of Wollongong and University of Queensland, Australia, Guest Research Professor, Marine Geology Lab, University of Tongji, Shanghai, China;
- Maggie Muurmans, Researcher and PhD candidate, Griffith University; and
- Gendewa Tunas Rancak, MTech, Dean of the Faculty of Engineering, Universitas Nahdlatul Ulama NTB and Head of the Environmental and Economic Development Division, Santiri Foundation.

Recording: <https://tinyurl.com/caipsdccw10>

Other material: <https://tinyurl.com/caipsdccm10>







## Webinar 11 | Thursday 30 July 2020

### Sustainable livelihoods and local economies on small islands

The panel in this webinar focused on the following questions: How can resilience and sustainability be integrated to become deeply rooted into small island inhabitants' livelihood, economy and daily lives? Are there already established policies, strategies, platforms, business models and opportunities available that can be utilised towards achieving sustainability and resilience?

The discussion was led by Anargha Setiadi, MSc, Research Associate (Ecology and Marine Biology), Research Center for Climate Change - Universitas Indonesia (RCCC - UI), and was opened with a speech from Professor Caitlin Byrne, Director of the Griffith Asia Institute (GAI), Griffith University.

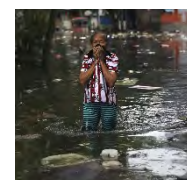
The following experts contributed to the discussion:

- Dr Pamuji Lestari, Expert Staff of the Minister for Marine Ecology and Resources, Ministry of Marine Affairs and Fisheries, Republic of Indonesia;
- Professor Jamaluddin Jompa, Dean of the Graduate School of Hasanuddin University and Advisor on Marine Ecology to the Minister of Marine Affairs and Fisheries;
- Associate Professor Tapan Sarker, Department of Business Strategy and Innovation, Griffith Business School, Griffith University; and
- Ahmad Baihaki, MSc, Senior Oceans Specialist, The World Bank.

Dr Erna Witoelar, Co-Founder Partnership ID, Advisor CAIPSDCC joined the discussion as a reviewer.

Recording: <https://tinyurl.com/caipsdccw11>

Other material: <https://tinyurl.com/caipsdccm11>



## Theme 4: Sustainable and low carbon development as pandemic recovery

Webinar 12 | Thursday 6 August 2020

The impact of COVID-19 on the low carbon future

This webinar in the series held in August focused on the following questions: How has the COVID-19 pandemic affected the progress of low carbon development? Has it impacted our commitment to climate change and transition into renewable energy? Could we use today's momentum as an opportunity for a more robust low carbon development and build back our society better?

The line of speakers who addressed these questions were:

- Ir Dida Gardera, MSc, Assistant Deputy Minister for Agro, Pharmacy and Tourism, Coordinating Ministry of Economic Affairs, Republic of Indonesia;
- Paul Butarbutar, Executive Director, Indonesia Renewable Energy Society (Masyarakat Energi Terbarukan Indonesia/METI);
- Dr John Hewson, Chair of the Business Council for Sustainable Development Australia, and Honorary Professor at the Crawford School of Public Policy, Australian National University;
- Dr Rob Hales, Director of Griffith Centre for Sustainable Enterprise, Griffith University.

The webinar began with an opening speech from Professor Jatna Supriatna, Director of the Institute for Sustainable Earth and Resources (I-SER), Universitas Indonesia. The session chair for this webinar was Kuki Soejachmoen, Assistant to the President's Special Envoy for Climate Change (2010-2019).

Recording: <https://tinyurl.com/caipsdccw12>

Other material: <https://tinyurl.com/caipsdccm12>







Webinar 13 | Thursday 13 August 2020

The impact of COVID-19 on the SDGs progress

The thirteenth webinar held in August addressed the following questions: How has the COVID-19 pandemic impacted the progress of achieving the Sustainable Development Goals? Which goals have been impacted the most from the pandemic? Which one should be our priority as we recover from the pandemic? Can the commitment to achieving SDGs help us in our recovery from the pandemic?

The opening speech was delivered by Professor Caitlin Byrne, Director of the Griffith Asia Institute, Griffith University. The webinar was chaired by Associate Professor Corina Riantoputra, Faculty of Psychology, Universitas Indonesia. The speakers included:

- Professor Akmal Taher, Professor, Faculty of Medicine, Universitas Indonesia, and Expert Team Member, Indonesia's COVID-19 Response Acceleration Task Force;
- Associate Professor Cheryl Desha, School of Engineering and Built Environment, Civil and Environmental Engineering, Griffith University; and
- Indah Budiani, SH, MSc, Executive Director, Indonesia Business Council for Sustainable Development (IBCSD).

Recording: <https://tinyurl.com/caipsdccw13>

Other material: <https://tinyurl.com/caipsdccm13>





Webinar 14 | Wednesday 19 August 2020  
Alternative funding for low carbon development

In the last webinar of the series on sustainable and low carbon development for pandemic recovery, these questions were the focus of the discussion: How can we move forward with low carbon development amid the economic impact of COVID-19? What kind of programs and instruments can we utilise to mitigate climate change while recovering from COVID-19? And, what is the availability of climate action funding in Indonesia, Australia and the region?

Chaired by Gita Syahrani, with opening remarks delivered by Professor Rachmat Witoelar, this webinar included the following speakers:

- Dr Medrilzam, Director for Environmental Affairs, National Development Planning Agency of Indonesia (Bappenas);
- Dr Adi Budiarmo, Head of the Climate Change and Multilateral Policy Center (PKPPIM), Fiscal Policy Agency, Ministry of Finance of Indonesia;
- John Connor, Chief Executive Officer of the Carbon Market Institute (CMI);
- Kuki Soejachmoen, Assistant to President's Special Envoy for Climate Change (2010-2019);
- Dr Rob Hales, Director of Griffith Centre for Sustainable Enterprise, Griffith University provided a review of the discussion.

Recording: <https://tinyurl.com/caipsdccw14>

Other material: <https://tinyurl.com/caipsdccm14>





## C. Research collaboration

The research collaboration component aims at enhancing the science-to-policy principle. Various stakeholders have been included in the research projects from national and local government, private sectors, NGOs, and communities. CAIPSDCC research collaboration focuses on the four themes: i) impacts of climate change on planetary and human health, ii) sustainable landscape management; iii) the transition to a low-carbon economy; and iv) increasing resilience in small islands of Eastern Indonesia.



*Discussions regarding research collaboration at the Griffith Climate Change Response Program (March, 2019), CAIPSDCC Team from Universitas Indonesia and Griffith University together with Representatives of the Coordinating Ministry of Economic Affairs of Indonesia.*



## Key projects

### 1. The impact of climate change on planetary and human health

This stream is focusing on investigating the impact of climate change on human health, especially the dengue fever case in Indonesia for the last 30 years (1990–2020). In February 2020, the CAIPSDCC joint research proposal with the title: Climate Change and Adaptation Capacity Development for the Vulnerability of Dengue Fever in Indonesia was submitted to PUTI funding by Universitas Indonesia. The proposal was granted to receive funding to conduct research for two years. Several cities and districts in Indonesia were chosen as the research location namely: Luwak Utara and Aros Districts in South Sulawesi, and Kupang City, Alor, and Sika Districts in East Nusa Tenggara.

The core team which consisted of Professor Budi Haryanto from Universitas Indonesia and Dr Febi Dwirahmadi from Griffith University, have collected the data related to climate parameters in those locations in collaboration with the Mathematics and Science Faculty, Universitas Indonesia. They have also collaborated with the Faculty of Public Health Universitas Indonesia to gather the data related to dengue cases. The team is currently planning for the analysis phase of the research.

A comprehensive scoping review of dengue cases in Indonesia for early warning system development purposes is also currently being conducted by Dr Febi Dwirahmadi and his student at Griffith University, which will be an integral part of the research outcomes. This result of the research is expected to be submitted as a manuscript to a peer-reviewed journal by January 2021.

### 2. Sustainable landscape management

A research proposal has been put together which will focus on several areas in Sulawesi in relation to forest governance. Several potential funders have been identified and will be followed up in early 2021.

### 3. Increasing resilience in small islands in Eastern Indonesia

A research proposal has been put together which will focus on three islands with different characteristics in eastern part of Indonesia. Several potential funders have been identified, however, the pandemic hinders the progress of the funding search for the research. A plan will be put forward to continue the work in early 2021.

### 4. Transition to a low-carbon economy

Several policy updates in Indonesia and Australia regarding climate issues—energy transition and domestic carbon market in Indonesia—provides opportunities for this research theme to contribute to further the discussion for potential collaboration. A plan for activities to enhance discussions between the two countries in 2021 will be put forward and will be followed by the development of several policy briefs.





## D. Communication

### Newsletter

The CAIPSDCC Sustainable Futures Bulletin (vol3) for 2020 (accessed online at: <https://www.griffith.edu.au/asia-institute/partnerships-collaborations/collaborative-australia-indonesia-program>) features the following articles:

1. *Australia-Indonesia shared adversity amid a pandemic* by Professor Rachmat Witoelar, Indonesian President's Special Envoy on Climate Change 2015–2019, and Head of Advisory Members of CAIPSDCC (Article RW);
2. *CAIPSDCC collaboration: An agenda for action* by Professor Caitlin Byrne Director, Griffith Asia Institute, and Professor Jatna Supriatna Director, Institute for Sustainable Earth Resources.
3. *What is needed for a smooth and effective energy transition in Indonesia?* by Moekti H Soejachmoen, Assistant to President's Special Envoy for Climate Change (2010–2019);
4. *Community engagement towards forest conservation from an Indonesian perspective* by Maggie Muurmans from Griffith University, Brendan Mackey from Griffith University, and Zuliyanto Zakaria from Universitas Negeri Gorontalo;
5. *Dual Masters a huge success despite COVID-19 lockdown* by Pugar S. Girdayanto and Dita Nadia Putri, both are students in the dual degree program of Griffith University and Universitas Hasanuddin; and
6. *CAIPSDCC webinar series on planetary and human health to fight global pandemic* which is a summary of discussion led by Professor Budi Haryanto from Universitas Indonesia, Professor Cordia Chu from Griffith University, and Dr Febi Dwirahmadi from Griffith University in the first CAIPSDCC webinar.

**Griffith UNIVERSITY** Queensland Australia  
**UNIVERSITAS INDONESIA** *Visi: Perkuliahan, Berkeadilan, Berkeadilan*

**AUSTRALIA-INDONESIA SUSTAINABLE FUTURES**  
COLLABORATIVE PROGRAM FOR SUSTAINABLE DEVELOPMENT AND CLIMATE CHANGE | VOLUME 3 2020

**Inside this issue...**

CAIPSDCC collaboration: An agenda for action	2
From the Secretariat	2
What is needed for a smooth and effective energy transition in Indonesia?	4
Community engagement towards forest conservation from an Indonesian perspective	5
Featured publications	6
Funding opportunities	6
Dual Masters a huge success despite COVID-19 lockdown	6
Meet our researchers	7
COVID-19 Updates from Indonesia, Australia and beyond	7
Photo gallery	8

**Australia-Indonesia shared adversity amid pandemic**

During his state visit to Australia, President Joko Widodo met Prime Minister Scott Morrison for the Indonesia-Australia Annual Leaders' meeting and held a joint ministerial meeting with the Australian and Indonesian ministers in Canberra on 10 January 2020. They witnessed the signing of the Plan of Action for the Comprehensive Strategic Partnership 2020-2024... (continuing, among other things, the commitment to actively develop cooperation between Indonesia, Australia and Pacific Islands including exploring options for practical cooperation in the area of climate change.)

I do expect to continue to write about the possibility of collaboration in line with the high-level commitment between the two countries. However, one month after the visit, the COVID-19 global pandemic had emerged. At the time of writing, the total number of confirmed cases is 5,103,006 and the death toll stands at 333,407. The numbers continue to increase rapidly. The United Nations Secretary-General, António Guterres, stated that there are three crucial action areas in response to the COVID-19 pandemic: the first and second are to tackle the health emergency while keeping the focus on the social impact and the economic response and recovery. Guterres then emphasised that we have to 'recover better'. He stressed that we have to learn and prepare ourselves for future health emergencies while continuing to fulfil our promise to the people and the planet – the 2030 Agenda for Sustainable Development, and the Paris Agreement on Climate Change.

As someone who has been working in the field of climate change for a long time, I could help but reflect on the COVID-19 pandemic and once a parallel between it and the climate change problem. Reflecting on the development of COVID-19, we heard predictions from the scientists and the experts on what might be seen by happening...

... continued on page 3

**Happy Eid Mubarak 1441 H/2020**





Queensland, Australia

## Griffith Asia Institute

### Griffith Asia Institute

Phone: +61 7 3735 3730

Email: [gai@griffith.edu.au](mailto:gai@griffith.edu.au)

Griffith University Nathan campus  
Nathan Queensland 4111, Australia

[Facebook.com/griffithasiainstitute](https://www.facebook.com/griffithasiainstitute)

[Twitter.com/GAIGriffith](https://twitter.com/GAIGriffith)

[Linkedin.com/company/griffithasiainstitute](https://www.linkedin.com/company/griffithasiainstitute)

[griffith.edu.au/asia-institute](http://griffith.edu.au/asia-institute)



UNIVERSITAS  
INDONESIA

*Veritas, Probitas, Justitia | Est. 1849*

### Institute for Sustainable Earth Resources

Phone: +628988945409

Email: [caipsdcc@sci.ui.ac.id](mailto:caipsdcc@sci.ui.ac.id)

Universitas Indonesia  
Gedung Laboratorium Multidisiplin FMIPA UI,  
Fakultas Matematika dan  
Ilmu Pengetahuan Alam, Kampus UI Depok, Depok  
16424, Indonesia

[Facebook.com/ISER.UI/](https://www.facebook.com/ISER.UI/)

[iser.sci.ui.ac.id/](http://iser.sci.ui.ac.id/)