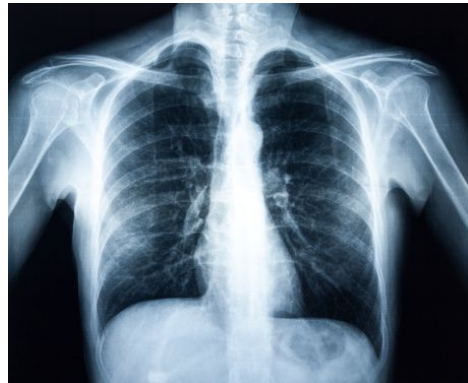


Tuberculosis Screening Information

It is a requirement of your degree program that you complete the [Queensland Health Student TB Assessment and Screening Form](#) prior to placement.

The [Queensland Health Student TB Assessment and Screening Form](#) is a self-assessment form. i.e There are clear, self-explanatory instructions to follow to determine individual risk. If, after correctly completing the form, you are self-identified as high risk, it is expected that you will follow up and make an appointment with a Queensland Health TB Service for further appropriate testing.



- [Contact details for Queensland Health TB Service](#)

The form should be taken with you to the appointment. If you have a TB screening appointment (Mantoux test and/or chest x-ray) through the MSCTB Service at the Princess Alexandra Hospital Complex, it is free of charge - but it can take a few months to secure an appointment. You can still go on placement PRIOR to your TB screening appointment, as long as you keep your future appointment time.

Tuberculin Skin Test (Mantoux)

A Tuberculin Skin Test (or Mantoux test) consists of two x 30 minute appointments on two separate days that occur 48 hours apart.

- [Queensland Government Department of Health Tuberculin Skin Test fact sheet](#)

It is acceptable for placements in Queensland to have a Mantoux test through a private pathology provider, such as QML. The cost for a Mantoux test through QML is paid by the student. Please be aware that New South Wales Health will only accept a Interferon Gamma Release Immunoassay (IGRA) from a private pathologist they will NOT accept a Mantoux test from a private pathologist.

Providing your Results

You will also need to provide the date of your Mantoux test (not the result), to the Fit for Placement Office.

The University need never know the result of a student's TST or CXR. If a student tests positive for TB, the University need never know the name of the student, only that there has been a case for contact screening purposes. However, a student with a positive test for TB is encouraged to follow up with their Program Convener for confidential discussion of self-care guidelines. TB screening is generally considered to be a once only requirement. However, if during your placement, you knowingly come into contact with someone with TB, you should have your baseline TB status checked again.

As a future health care worker, it is your responsibility to meet TB screening obligations.

- [Non-participation in TB Assessment and Screening Form](#)