

## Introduction

Griffith has introduced MFA to ensure the security of your information by adding an additional layer of authentication to your Single Sign-On. PingID is the MFA tool used by Griffith. This guide shows how to install and setup MFA on your Mac computer.

## Set up MFA on your Mac computer

- 1 *If you are already logged into a Griffith App or myGriffith using your browser, you will need to log out and log back in, starting the process from a new browser window.*

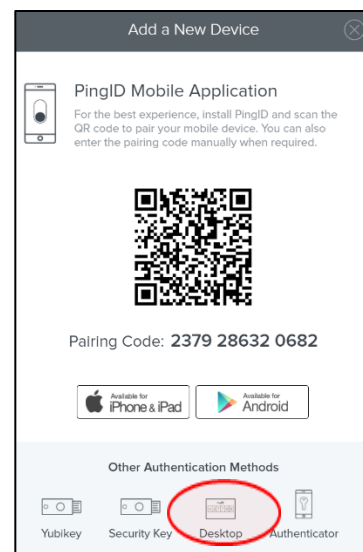
Login to MyGriffith at <https://my.griffith.edu.au> using your Griffith credentials.

A red login form titled "Griffith Single Sign-On". It has fields for "Username" and "Password", each with a small eye icon to toggle visibility. Below the fields is a "Login" button with a right-pointing arrow.

- 2 Select **Start** at the **Welcome to Multi-Factor Authentication** window.



- 3 From the **Add a New Device** prompt, select **Desktop** from **Other Authentication Methods**.



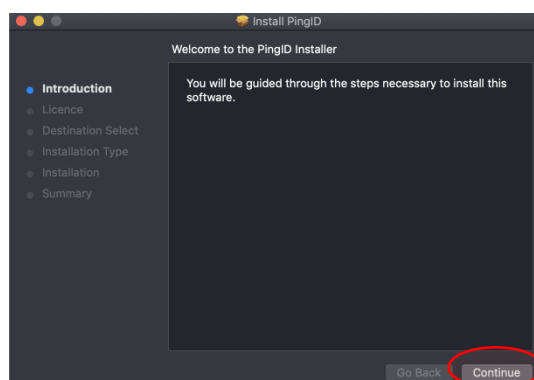
- 4 From the **Desktop Setup** prompt, select **PingID Download for Mac OS**.



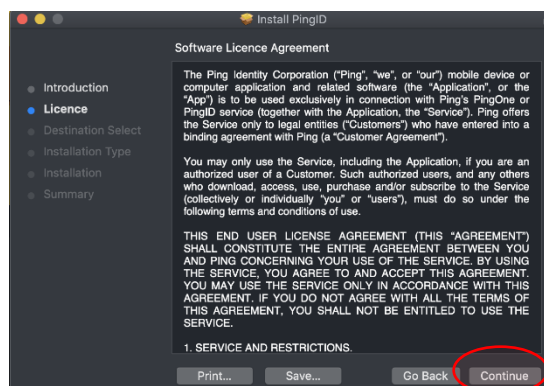
- 5 Open the **PingID.pkg** download file to launch the package.



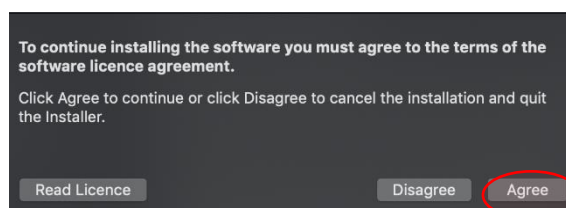
- 6 A. To install PingID, select **Continue**.



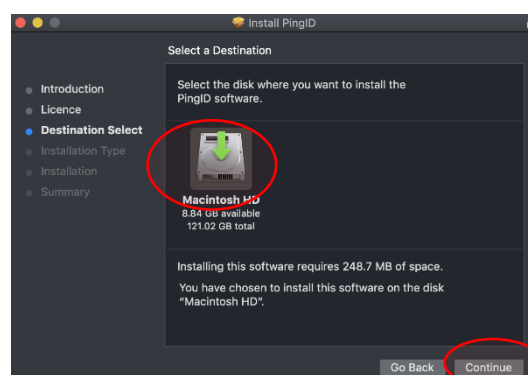
- B. Read the **Software Licence Agreement**, select **Continue**.



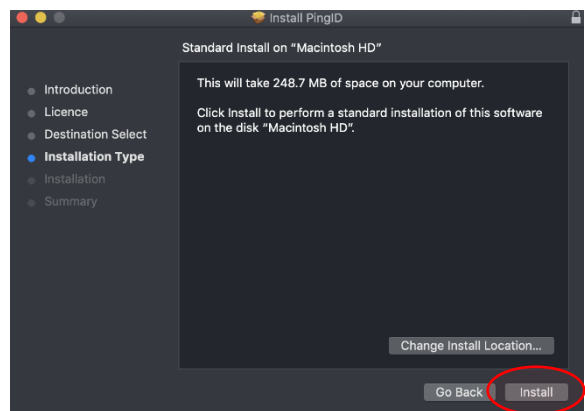
- C. Agree to the terms of the **Software Licence Agreement** by selecting **Agree**.



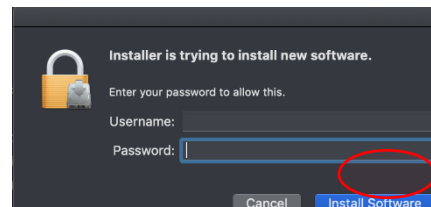
- D. Select a destination for installation, select **Continue**.



E. Select **Install**.

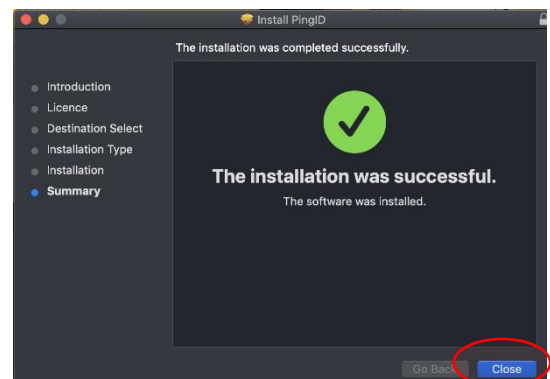


F. You maybe prompted to sign in to approve the installation, enter your details, then select **Install Software**.

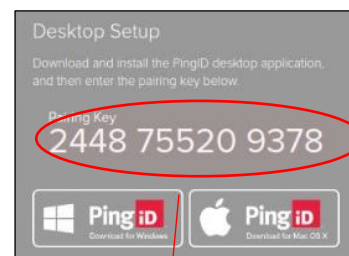


G. Once Installation is completed successfully select **Close**.

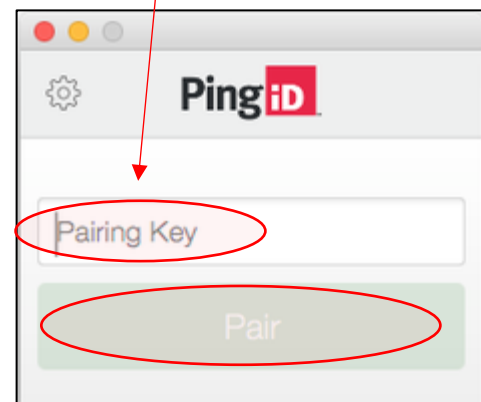
**NOTE: Do not uninstall the PingID App!**  
To use MFA you need to use the PingID App each time you authenticate with MFA to access a Griffith App.



**7** Copy the **pairing key** from the **Desktop Setup** browser window.



**8** Paste the **pairing key** into the **PingID** window, select **Pair**.  
Setup is now completed.



## Next step - set up MFA on a second device

For those times when you cannot access your primary device.

How to guides are available on the MFA for students web page [www.griffith.edu.au/student-computing/mfa](http://www.griffith.edu.au/student-computing/mfa)