

## Introduction

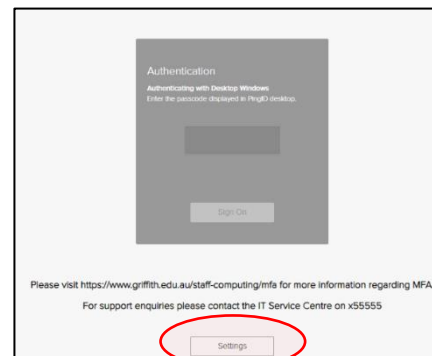
Griffith has introduced MFA to ensure the security of your information by adding an additional layer of authentication to your Single Sign-On. PingID is the MFA tool used by Griffith. This guide shows how to install and setup MFA on your IOS as an additional device.

## How to set up MFA on your iOS device (as an additional device)

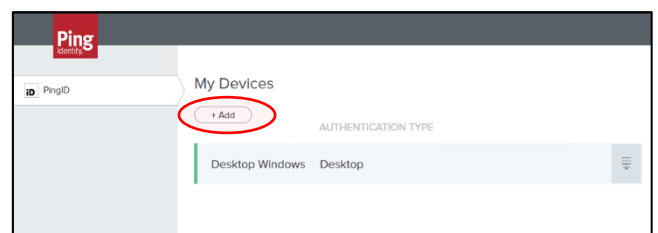
- 1 On your computer Login to **MyGriffith** at <https://my.griffith.edu.au> using your Griffith credentials.

A red login form titled "Griffith Single Sign-On". It has fields for "Username" and "Password", each with a small eye icon to toggle visibility. Below the fields is a "Login" button with a right-pointing chevron.

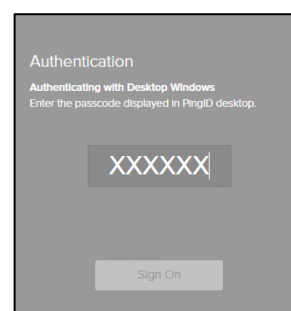
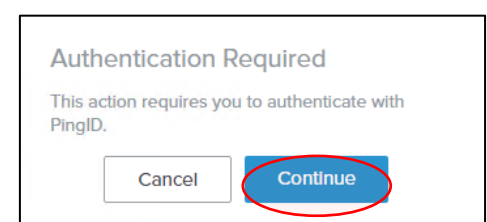
- 2 When the **Authentication** screen opens, select **Settings**. You will see a similar screen depending on the device that you have previously set up with MFA.

A grey "Authentication" screen. It says "Authenticating with Desktop Windows. Enter the passcode displayed in PingID desktop." Below this is a "Sign On" button. At the bottom, there is a "Settings" button which is circled in red. A URL and support contact information are also visible at the bottom.

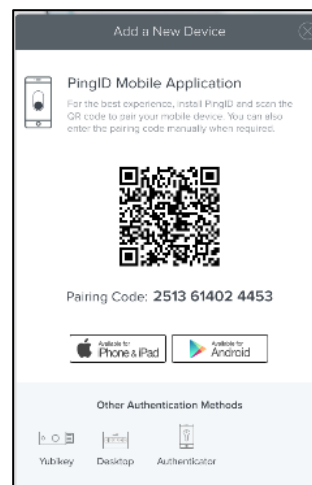
- 3 On **My Devices** page, select **+Add** to set up an additional device.

A "My Devices" page from the PingID interface. It shows a list of devices with "Desktop Windows" and "Desktop" listed. A "+ Add" button is circled in red. The "AUTHENTICATION TYPE" is set to "Desktop".

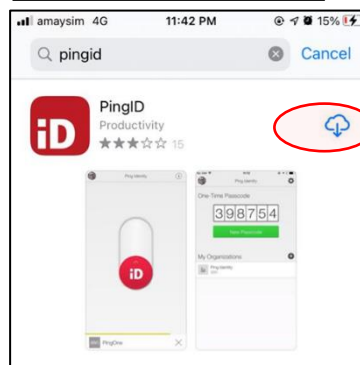
- 4 Authentication Required screen will appear, select **Continue** and completed MFA Authentication with your primary device.

A grey "Authentication" screen. It says "Authenticating with Desktop Windows. Enter the passcode displayed in PingID desktop." Below this is a passcode field showing "XXXXXX" and a "Sign On" button.A white "Authentication Required" screen. It says "This action requires you to authenticate with PingID." Below this are "Cancel" and "Continue" buttons. The "Continue" button is circled in red.

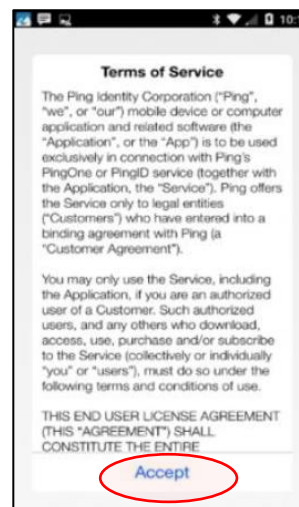
- 5 The **Add a New Device** window will open.



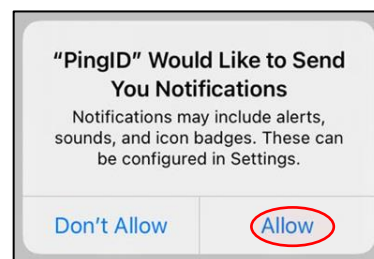
- 6 Go to your iOS device, from the **Apple Store** Install the **PingID** app.



- 7 On your IOS device Open the PingID App. The first time you do this you will be asked to accept the **Terms of Service**, select **Accept**.



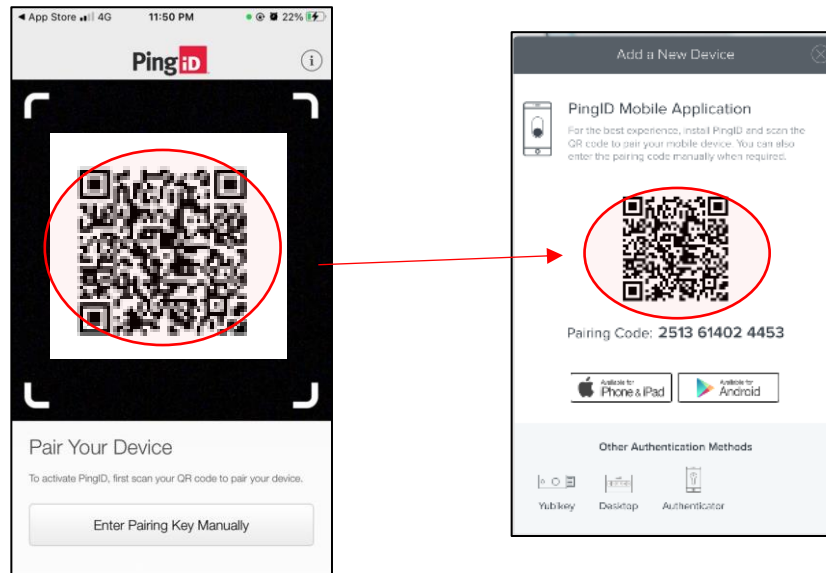
- 8 You may need to **Allow** PingID to use device resources.



9

On the IOS device **either**:

- A. Scan the QR code from the **Add a New Device** window on the computer



- B. Or, Select **Enter Pairing Key Manually**, enter the Pairing Code from the **Add a New Device** window on the computer > select **Pair Device**.



10

Complete the setup by entering a profile name, select **Done**

