

# How to...

## Install PingID for Multi-Factor Authentication on a Mac computer

### Introduction

Multi-factor authentication (MFA) is a way to ensure our accounts are highly-secured with multiple layers of security. PingID is the tool Griffith uses to enable MFA. This guide will show you how to install PingID on a Mac computer.

### Step 1: Installation on a Griffith device

Download the PingID app from <https://www.pingidentity.com/en/resources/downloads/pingid.html> if you are using a personal device.

- 1 Login to the staff portal using your Griffith credentials.
- 2 At the PingID registration screen, select **I want to use a different authentication method**.
- 3 Select **Authenticate** using the desktop application and then **Next**.

**Griffith Single Sign-On**

Username

Password

Login >

PingID

Griffith Single Sign-On

Great news! Your company is giving you the simplicity of PingID, so you can sign on to all your applications with the added security of a swipe on your mobile device. Enter your email address, and we'll send you a link to download PingID.

user@griffith.edu.au

Get Download Link

I already installed the PingID app

Next steps

You must enroll in the PingID service by December 9, 2019.

Select to use a different authentication method

Available for iPhone & iPad

Available for Android

**Alternative Authentication**

Authentication Preference

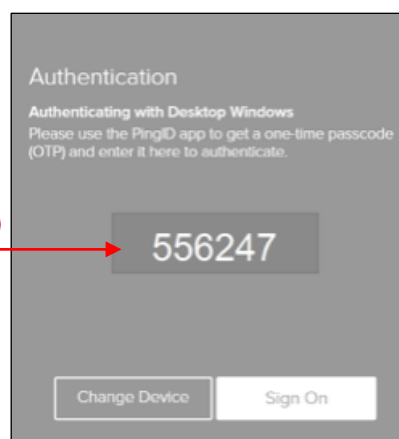
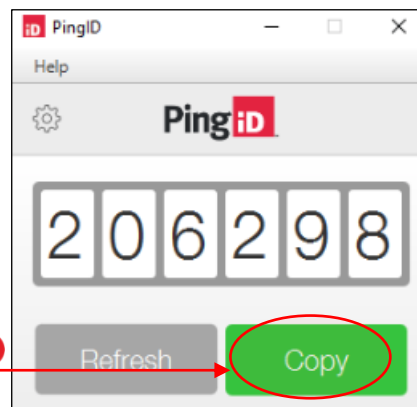
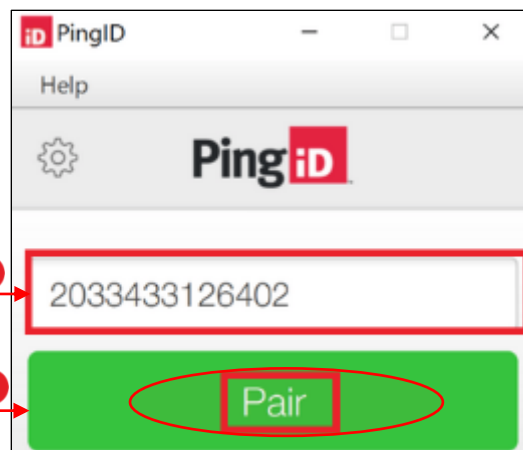
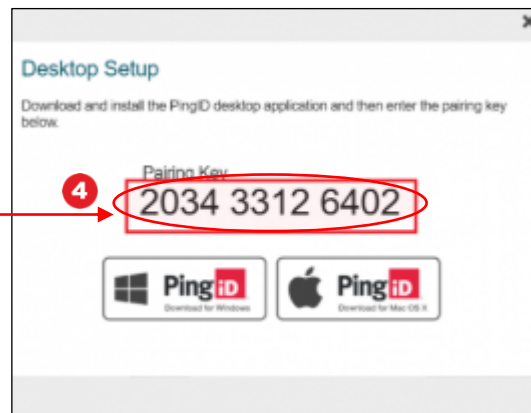
To verify your identity with one-time passcodes, select your authentication preference.

☐ Authenticate with YubiKey

☒ Authenticate using the desktop application

Next

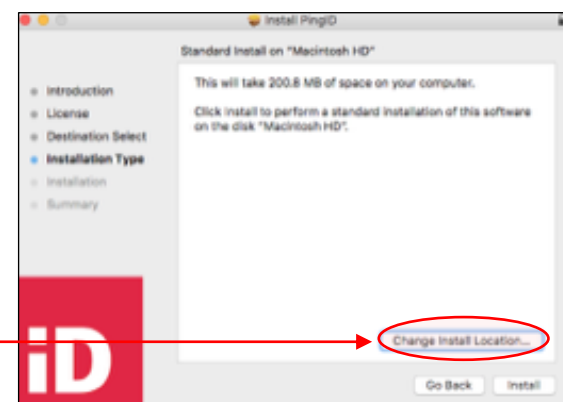
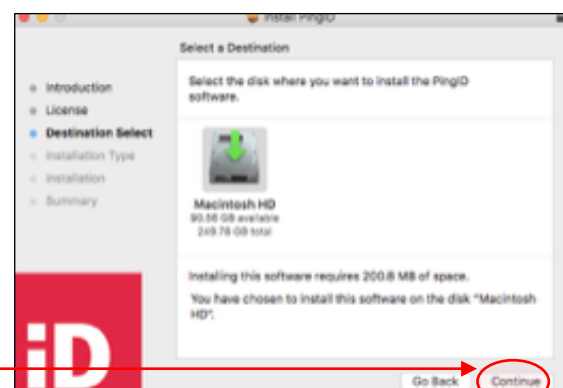
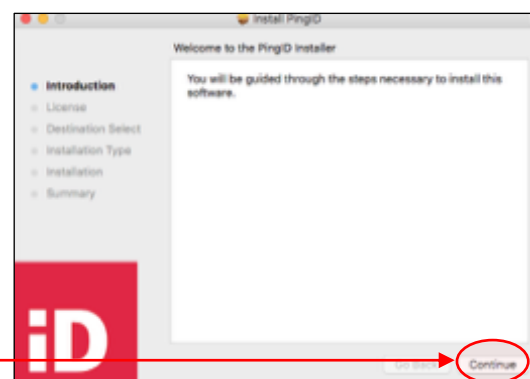
- 4 Copy the pairing key shown in the **Desktop Setup** window.
- 5 Open the **PingID desktop application**. Enter the **pairing key** you obtained at step 1.4, then select **Pair**.
- 6 The PingID desktop App displays a one-time passcode. Select **Copy** to copy the passcode.
- 7 Paste the copied passcode into the **Authentication** window. Please ensure the browser window is selected when you paste the passcode. You can only use it once and will need to refresh the browser to generate a new passcode if required.



## Step 2: Installation on a Personal Mac

- 1 Follow steps 1.1 to 1.3.
- 2 Copy the **Pairing Key**. You will use it at **step 2.8**.
- 3 Select **Download for Mac OS X** and save the file to your local drive.
- 4 Open **PingID.pkg** to open the app installer and select **Continue**.
- 5 Review the software license agreement, then select **Continue** and **Agree**.
- 6 Select your desired location for PingID installation and select **Continue**.
- 7 To change the location to which PingID will be installed, select **Change Install Location**, then navigate to the new location, otherwise select **install**.

If prompted, enter your system password.



- 8 Open the **PingID desktop app** and enter the **pairing key** your copied at **step 2.2**. Select **Pair**.
- 9 The **PingID desktop app** displays a one-time passcode. Select **Copy**.
- 10 Paste the copied passcode into the **Authentication** window and then select **Sign On**. Please ensure the browser window is selected when you paste the passcode. You can only use it once and will need to refresh PingID to generate a new passcode if required.

