

Griffith Rural Residential Medical Program

Darling Downs | South Burnett | South West



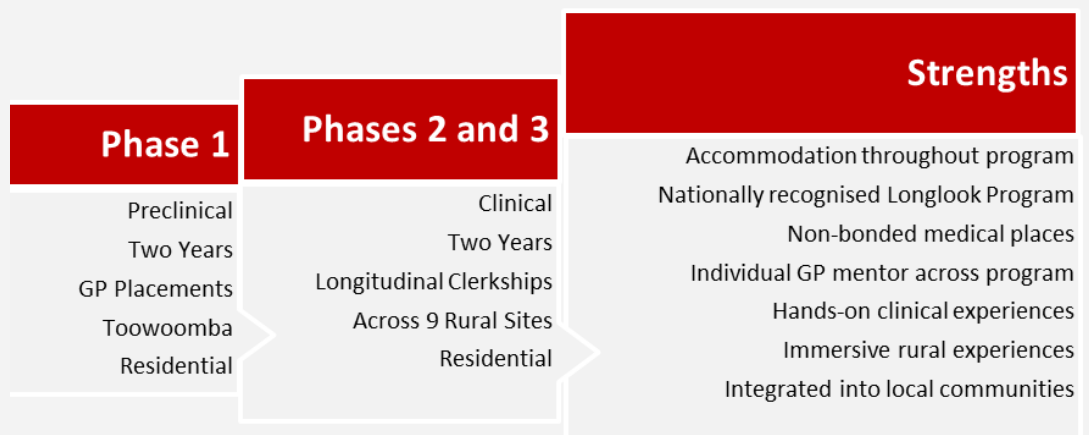
A medical program for the future of healthcare in Australia

Focus on Rural General Practice Griffith University's 4-year postgraduate [Doctor of Medicine](#) program prioritises General Practice, Rural General Practice, Primary Care and First Peoples Health. It embeds a flagship **General Practice Longitudinal Program** that provides early and sustained immersive experiential learning in primary care settings across the four years of the curriculum. In 2024 and 2025, the Griffith Medical Program ranked in the top three Australian medical programs contributing graduates to the general practice training program offered by the Royal Australian College of General Practitioners, establishing its credentials in promoting general practice.

Partnership with Rural Medical Education Australia The new Griffith Rural Residential Program will be delivered in collaboration with [Rural Medical Education Australia](#). This partnership already delivers the [Longlook Program](#) - a rural longitudinal clerkship that provides comprehensive, immersive clinical training in the final two years (Years 3 and 4) of the Griffith Medical Program. The Longlook clinical training is delivered through the [Griffith University Rural Clinical School](#) across Toowoomba, Warwick, Roma, Stanthorpe, Dalby, Kingaroy, Goondiwindi, Beaudesert, Chinchilla and surrounding towns.



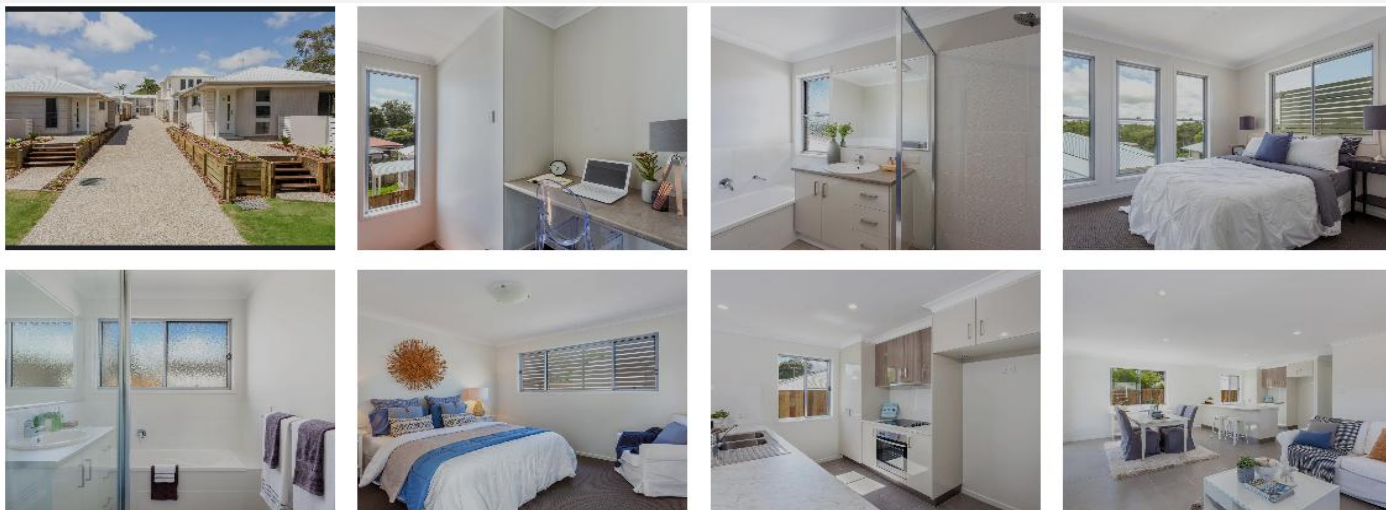
An Innovative End-to-End Rural Program The Federal Government has granted Griffith University 10 new non-bonded Commonwealth Supported Places to build on this existing Rural Clinical School and establish an end-to-end rural stream by delivering the 2 years of pre-clinical Phase 1 at Toowoomba. This new program will also offer **On-Site Accommodation** across the four years of study. This **Griffith Rural Residential Medical Program** (GriffithRRMP) aims to extend rural immersion, promote graduates into General Practice and Rural General Practice careers and keep students embedded in the communities that they will eventually serve. Rural Generalists and General Practitioners will serve as mentors for the life cycle of each student.



Residential facilities for duration of program

All students admitted to the Griffith Rural Residential Program will be provided guaranteed, subsidised accommodation for the entire duration of the four-year program of study. For Phase 1 (2 years), accommodation will be at Toowoomba, and then at the various Longlook Program affiliated [Rural Hospital sites](#) across Queensland for Phases 2 and 3 (2 years).

Toowoomba Residential Facility Students in Toowoomba are housed at the Swallow Court Unit Complex (shown below), which accommodates up to seventeen residents and includes a fully equipped kitchen, individual bedrooms (some with ensuites), and shared living areas. Bedrooms contain either a king single or double bed, a desk, chair, bedside lamp, and reverse-cycle air conditioning. The complex offers a lounge area, undercover outdoor spaces, laundry facilities, internet access, and undercover parking. It is a 30-minute walk to the town centre, a 5-minute walk to the nearest convenience store and is serviced by public transport.



Impact makers from the Griffith Rural Longlook Program

Dr Elizabeth Hamilton completed a B. Medical Science and MD with First Class Honours at Griffith University, where she did clinical training through the



Longlook Rural Program at Warwick, an experience that strengthened her commitment to rural health. She was awarded Queensland's first ever Rhodes Scholarship in 2018 and completed a Master of Science in Global Health and Epidemiology and a DPhil at Oxford University. She is now a Public Health Specialist.

Dr Kathryn Woodward graduated B. Medical Science and MD (Hon) from Griffith University. She completed rural clinical training across Darling



Downs, experiences that deepened her commitment to rural and remote healthcare. Queensland's second Rhodes Scholar, she completed a Master of Applied Digital Health and now undertaking a DPhil in Primary Health Care at Oxford University, researching refugee health in Toowoomba.

Dr Eiryn Twidale a recent Griffith medical graduate, received national recognition as the Medical Student of the Year 2025 by the Australian College of Rural &



Remote Medicine and the Rural Doctors Association of Australia. Through the Longlook Program at Kingaroy she gained broad rural clinical experience and co-founded community fitness initiatives. She is an advocate and leader in advancing Queensland's Rural Generalist Pathway for medical graduates.