



PROGRAM TO EQUIP
TAIWANESE HEALTHCARE
LEADERS FOR A CLIMATE
RESILIENT SYSTEM
(PETALS)

Guide for Applicants

2025



Acknowledgements



PETALS is supported by the Australian Office, Taipei. Griffith University is proud to be supported by the Australian Office, Taipei on this important project that showcases excellence in sustainable healthcare services.

Introduction.

Climate-resilient healthcare focuses on reducing hospital emissions and waste while ensuring the continuity of healthcare systems during climate-related events and crises. As climate change continues to challenge global economic prosperity, environmental sustainability, and community well-being, health systems must proactively address these impacts through strategic adaptations in infrastructure, policies, and operations.

Australia has been a global healthcare leader for over 30 years, boasting a highly integrated and multidisciplinary private and public healthcare system that has adopted climate-resilient practices. Taiwan has recently introduced climate-resilient healthcare and has made significant progress by accelerating the use of digital technologies to increase efficiency in its health systems.

Both Australia and Taiwan are members of the Global Cooperation and Training Framework, which facilitates sharing expertise worldwide, including in sustainability and climate resilience. Additionally, Australia and Taiwan share cultural connections through First Nations heritage, providing a unique opportunity for people-to-people exchange and engagement. Collaborative efforts between Australia and Taiwan aim to leverage their strengths, foster knowledge-sharing, and establish a robust, standardized framework for climate resilience.

The Program to Equip Taiwanese heAlthcare Leaders for a Climate-Resilient System (PETALS) targets three critical areas:

1. Managing escalating health risks from extreme weather events and disease outbreaks.
2. Developing resilient infrastructure to ensure uninterrupted hospital operations during crises.
3. Implementing sustainable practices to minimize healthcare's environmental footprint.

This 2025 Guide for Applicants outlines the PETALS program, delivered by Griffith University, and provides you with key details about the application process for this opportunity. Please note, submitting an application does not predicate enrolment in the program.

About Program to Equip Taiwanese heAlthcare Leaders for a climate-resilient System (PETALS).

The Program to Equip Taiwanese heAlthcare Leaders for a climate-resilient System (PETALS) is a comprehensive training program designed to support emerging future hospital leaders in Taiwan develop essential skills in climate adaptation leadership, emergency preparedness, and sustainability implementation.

Through sharing sustainable healthcare practices in self-paced online learning, workshops, this program will prepare future leaders to better address public health crises while adapting to climate change challenges.

It will further enhance people-to-people connections between Australia and Taiwan by establishing an alumni network of future health leaders in Taiwan with Australian counterparts in climate-resilient healthcare.

PETALS has been designed specifically for 25 established or emerging leaders, including clinicians and health service administrators, who are passionate about climate ready healthcare.

PETALS will be delivered from January 2026 – March 2027 using a combination of:

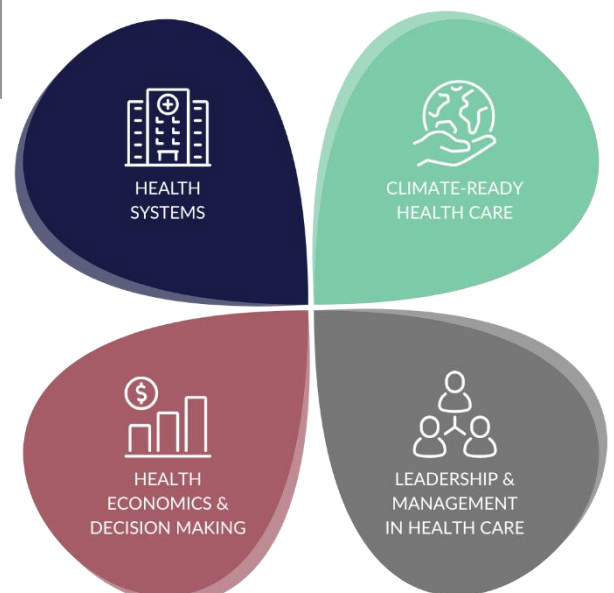
- Online learning modules
- Face to face workshops
- Taiwanese health leaders visit to Australia

The course materials will be available in English and Mandarin
課程資料將提供中文翻譯

Online learning modules

There are four online learning modules, that run for 10 weeks each. You will need to spend 5-10 hours per week working through the online learning content and self-directed learning activities:

- **Module 1: Health Systems:** an in-depth exploration of contemporary Australian and international healthcare systems, including their capacity to address sustainability and climate-related demands
- **Module 2: Climate-Ready Health Care:** enhancing healthcare managers' capabilities in adapting healthcare systems and infrastructure to address climate change challenges
- **Module 3: Health Economics and Decision-Making:** facilitating health managers in making informed funding, service delivery and policy decisions that will increase the value and efficiency of health systems



- **Module 4: Leadership and Management in Health Care:** applying and adapting leadership principles to address complex challenges in health, aged and social care environments, including how to integrate sustainability and climate-responsive strategies.

Face to face workshops

Following the completion of each online learning module, participants will attend a 2-day face to face workshop in Taipei to consolidate module learning and provide an opportunity to network with other program participants. You need to complete the online learning module to be eligible to attend the face-to-face workshops. You will need to cover any travel and/or accommodation costs associated with attendance at these workshops. The workshops are catered.

Taiwanese health leaders visit to Australia

In March 2027, ten PETALS participants will have the opportunity to deepen their program learning through a site visit to Australia, including stops in Brisbane and Melbourne to tour various hospital and health services, and attend an immersive First Nations cultural experience.

Key program delivery dates.

Date	Course	Proposed Workshop Schedule
January – March 2026	Health Systems	March 2026
April - June 2026	Climate-Ready Health Care	June 2026
July – September 2026	Health Economics and Decision-Making	September 2026
October – December 2026	Leadership and Management in Health Care	December 2026
March 2027	Taiwanese health leaders visit to Australia	Not applicable, dates to be advised.

What are the program costs?

- Online modules: PETALS modules are available online and offered at no cost to successful applicants.
- Face to face workshops: Catering is provided for all face-to-face workshops hosted in Taiwan. Participants do need to cover any costs associated with travel/lodging to attend these workshops.
- Taiwanese health leaders visit to Australia: Selected participants will engage in a site visit to hospital and health services in Australia. Flights, accommodation and per diem expenses will be covered.

Application process.

Who can apply?

The program is designed for early career clinical and administrative health professionals seeking to lead the future of climate-resilient initiatives and advance their professional development. Applications are open to those Taiwanese healthcare workers who meet the entry requirements specified below:

- Certificate indicating successful completion of a relevant university degree PLUS two years relevant work experience in the health or aged-care sector, including non-government organisations and other related organisations
- Support to attend 2 intensive workshop days for each of the PETALS modules (8 days in total)
- Ability to attend site visit to Australia (should you be selected)
- A letter of endorsement of your participation by your Line Manager attesting your experience and supporting your participation in the program, including attendance at intensive workshop days.

Application dates.

Key dates	Activities
June - August 2025	Applicant information sessions
1 July 2025	Applications Open
1 October 2025*	Applications Close
September - October 2025	Applications reviewed by PETALS team
End of October 2025	Applicants notified of outcome via email from PETALS team (petals@griffith.edu.au)
November 2025	Enrolment into PETALS
January 2026	PETALS commences

*Unless capacity reached earlier

About the application process.

Once you have confirmed you are eligible to apply, you will need to complete an application. Applications (submitted in English) consist of:

- An application form
- A cover letter that details:
 - Why you are interested in this enrolling in PETALS
 - What makes you an ideal candidate for the PETALS program
 - Some examples of your work in health leadership, climate ready healthcare and/or health economics
 - How PETALS will support your professional growth
 - Key skills/expertise
- A letter of endorsement of your participation by your Manager attesting your experience and supporting your participation in the program.
- 2-page resume detailing your academic and work history that highlights your capability and interest in climate ready healthcare
- Certification of your university qualifications

Applications are to be emailed to petals@griffith.edu.au by close of business, 31st August 2025.

The application form

Sections in the application form

- Full name, date of birth
- Contact details: phone number, email address, work address
- Current job title, organisation/company
- Years of experience
- File upload:
 - Cover letter
 - Letter of support from your manager
 - 2-page resume
 - University degree certification

Advising of application outcome

At the end of October, an email will be sent from petals@griffith.edu.au to your primary email address with a letter attached, advising of your application outcome. Individual feedback on applications will not be given.

For further information contact.

Dr Hansoo Kim
PETALS Program Director
Email: petals@griffith.edu.au



PROGRAM TO EQUIP
TAIWANESE HEALTHCARE
LEADERS FOR A CLIMATE
RESILIENT SYSTEM
(PETALS)