

Constructing Building Integrity: Raising Standards Through Professionalism

Integrity System Maps: Building Surveyors

October 2024

Compiled by

Elizabeth Bazen

Curtin University, Australia



Overview

This fact sheet contains the high-level and detailed integrity system maps for building surveyors. It is an additional resource document that should be read in conjunction with the industry fact sheet for building surveyors.

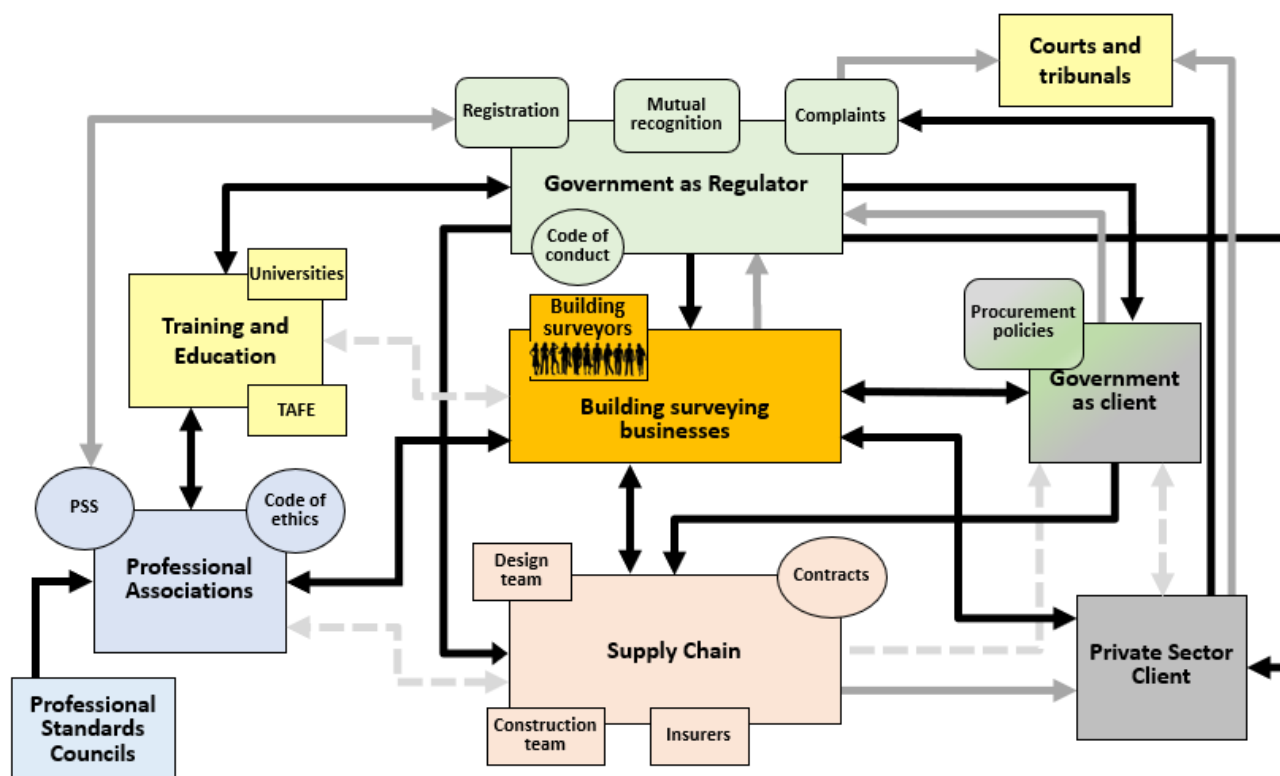
Integrity Systems

Professional integrity systems are made up of mutually supportive norms, institutions and mechanisms that work together to promote high ethical and professional standards. They are comprised of a combination of state institutions and agencies (courts, parliament, prosecutors), state watchdog agencies (industry regulators, statutory registration bodies, ombudsman, auditor general, parliamentary committees), non-governmental organisations (NGOs), laws, norms (e.g. codified acceptable standards), and incentive mechanisms.

Integrity systems aim to make the desired behaviour clear and easy to follow, while also making it hard and risky to do the wrong thing. The integrity system approach recognises that ethics and integrity cannot be left to individual professionals, and that a profession's values, and the public goods it delivers need to be supported by ethical norms, legal regulation, economic incentives and institutional design.

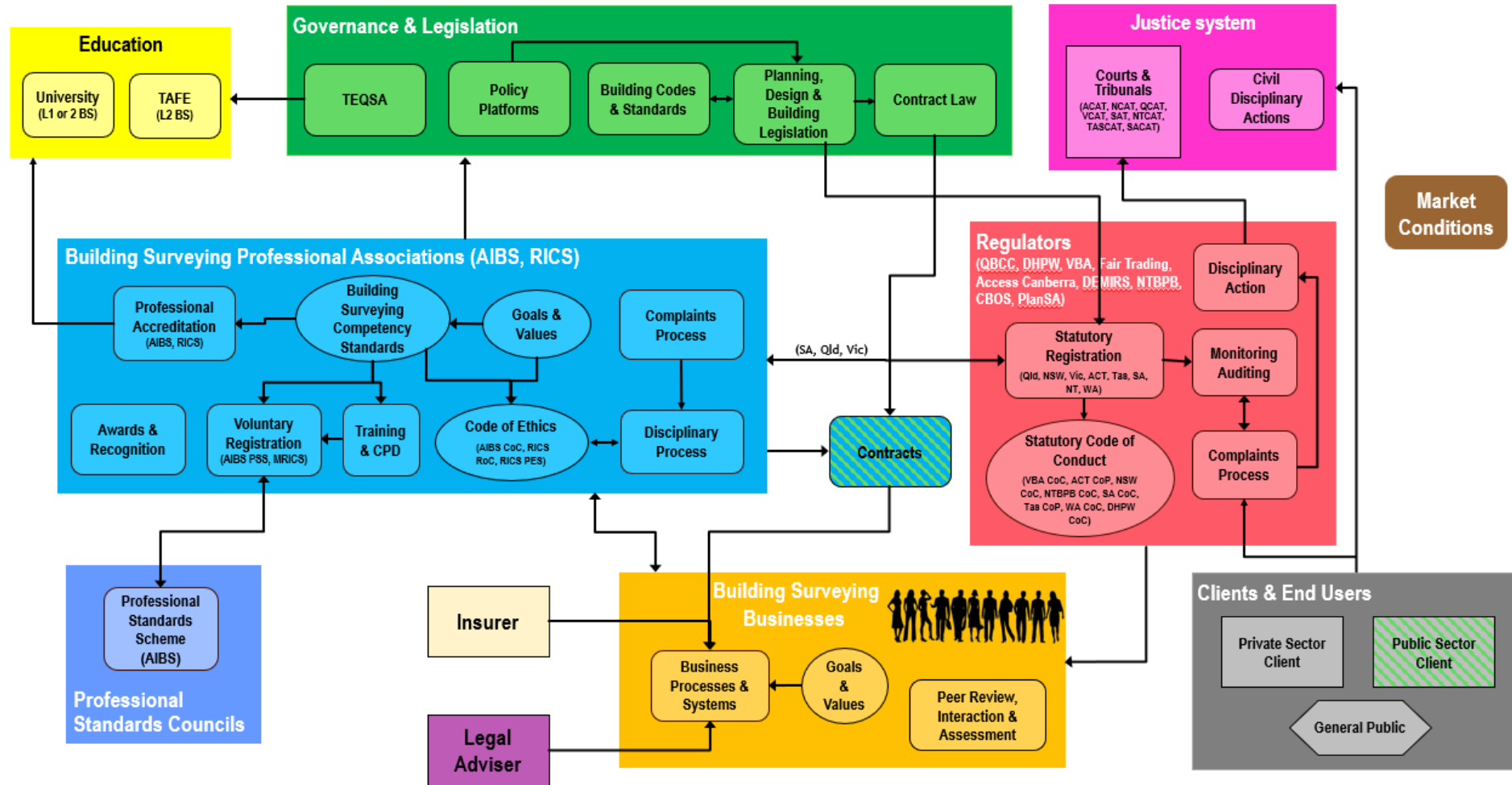
To identify the strengths and weaknesses in the integrity system for building surveyors, two maps were developed: a high-level map covering the system's core components (**Figure 1**); and a detailed map that provides an in-depth summary of the profession's integrity system (**Figure 2**). Please note that the research focused on the national context and four state jurisdictions: Queensland, New South Wales, Victoria and Western Australia.

Fig. 1: High-Level Integrity System Map – Building Surveyors



| LEGEND | | | | | |
|--------|--------------------------------------|--|--|--|--|
| | Direct influence (strong, two-way) | | Indirect influence (strong, two-way) | | Indirect influence (strong, one-way) |
| | Direct influence (moderate, two-way) | | Indirect influence (moderate, two-way) | | Indirect influence (moderate, one-way) |
| | Direct influence (weak, two-way) | | Indirect influence (moderate, two-way) | | Indirect influence (moderate, one-way) |

Fig. 2: Detailed Integrity System Map – Building Surveyors



ABBREVIATIONS

| | | | | | |
|--------------|--|--------------|---------------------------------------|---------------|---|
| ACAT | ACT Civil and Administrative Tribunal | NCAT | NSW Civil and Administrative Tribunal | RICS | Royal Institute of Chartered Surveyors |
| ACT | Australian Capital Territory | NSW | New South Wales | RoC | Rules of Conduct |
| AIBS | Australian Institute of Building Surveyors | NT | Northern Territory | SAT | State Administrative Tribunal |
| CoC | Code of Practice | NTBPB | NT Building Practitioners Board | Tas | Tasmania |
| CoP | Code of Conduct | NTCAT | NT Civil and Administrative Tribunal | TASCAT | Tas Civil and Administrative Tribunal |
| CPD | Continuing Professional Development | PES | Professional and Ethical Standards | TEQSA | Tertiary Education Quality and Standards Agency |
| CPEng | Chartered Professional Engineer | PSS | Professional Standards Scheme | VCAT | Vic Civil and Administrative Tribunal |
| DPHW | Department of Housing and Public Works (Qld) | QCAT | Qld Civil and Administrative Tribunal | Vic | Victoria |
| MRICS | Chartered Member RICS | Qld | Queensland | WA | Western Australia |

FURTHER READING

Breakey, H. & Charles Sampford (2018) 'Integrity Systems' *Professions Research Library* Professional Standards Councils. <https://www.psc.gov.au/research-library/professions/integrity-systems>

Pope, J. (2000) *Confronting Corruption: The elements of a National Integrity System (The TI Source Book)*, Transparency International. <https://bsahely.com/wp-content/uploads/2016/10/the-ti-source-book-20001.pdf>

Sampford, C., Smith, R., & Brown, A. J. (2005). From Greek Temple to Bird's Nest: Towards A Theory of Coherence and Mutual Accountability for National Integrity Systems. *Australian Journal of Public Administration*, 64(2), 96-108.

CITATION

Bazen, E. (2024). *Industry Fact Sheet: Building Surveyors*. Griffith University, October 2024.

PROJECT RESEARCH

Sampford, C., Burton, P., Desha, C., Reid, S., Stewart, R., Hampson, K., Phillimore, J., Easthope, H. Ostwald, M., London, K., Pablo, Z., Breakey, H., Cooper, K., Sahin, O., Bazen, E., Gillon, C., Bok, B., Gow, P. (2024), *Constructing Building Integrity: Raising Standards through Professionalism. Final Industry Report*. Griffith University, August 2024. https://www.griffith.edu.au/_data/assets/pdf_file/0029/2007659/ARC-LP-CBI-Final-V2.pdf

Additional research arising from the project (including the Final Industry Report) can be found at: <https://www.griffith.edu.au/law-futures-centre/institute-ethics-law-governance/our-research/construction-building-integrity>

