



Indigenous Research Unit

2015 **Annual** Report

Contents

Message from the Senior Deputy Vice Chancellor	3
Message from the Professor of Indigenous Research	4
About the IRU Structure	5
Our Vision	6
Our Mission	7
Our Values	8
Our Goals	8
Our Aims	8
Our Resources	9
Our Goals for 2016	10
Our Members	11
Member Profiles	
Professor Adrian Miller	12
Professor Boni Robertson	13
Professor Roianne West	14
Associate Professor Karen Martin	15
Dr Francis Bobongie	16
Dr Kerry Bodle	17
Ms Heron Loban	17
Mr Harry Van Issum	19
Research Highlights	20
Collaborations	21
Research Grants	22
Table 1. Successful grants	23
Table 2. Projects in progress	24
Table 3. Unsuccessful proposals	25
Table 4. Proposals total amount of research activity	26
Publications	27
Invited Memberships on Advisory Boards	28
Invited Lectures/ Forums / Seminars	29
Our People, Our Stories, Our Way	30

Message from the Senior Deputy Vice Chancellor


Professor Ned Pankhurst

In 2015 the Indigenous Research Unit has continued on its path of supporting the University's vision of becoming one of the most influential universities in Australia and the Asia Pacific region.

This report serves to highlight the breadth of research activities being undertaken and expanded on by our Aboriginal and Torres Strait Islander academic members of staff and graduate students. It is particularly pleasing to see the Unit's early career researchers developing a research profile within their respective disciplinary areas, strongly encouraged by support from the Indigenous Research Unit's small grants and conference funds. The IRU also provides a platform for the dissemination of its members' research outcomes through workshops and seminars offered within the University and to the wider community.

Throughout 2015 the IRU has continued to build its relationships nationally, by participating in The Lowitja Institute's Program Committees, and engaging in international collaborative research opportunities through the Canadian Institute of Health Research and Social Sciences and Humanities Research Council of Canada. Encouragingly, the outcomes of such relationships facilitate the University's contribution to Aboriginal and Torres Strait Islander research impact and policy development on both a local and global level.

As we look forward to 2016 I am confident that the IRU will continue to positively impact and contribute to the research agenda of Aboriginal and Torres Strait Islander peoples in both a national and international capacity.



Message from the Professor of Indigenous Research

Professor Adrian Miller



In 2015 we were pleased to welcome three new members, Dr Francis Bobongie (Post-doctoral Fellow), Ms Heron Loban and Mr Harry Van Issum, to the Indigenous Research Network. All three have taken the opportunity to progress their research activities and output supported by IRU research small grants and conference funds and we look forward to sharing their successes in our next report. In addition, we have also been pleased to provide Indigenous HDR students with the support to promote their research through the dissemination and sharing of their project outcomes. Our intention is to build on this relationship with Indigenous HDR students and continue supporting their research capacity development through innovative activities.

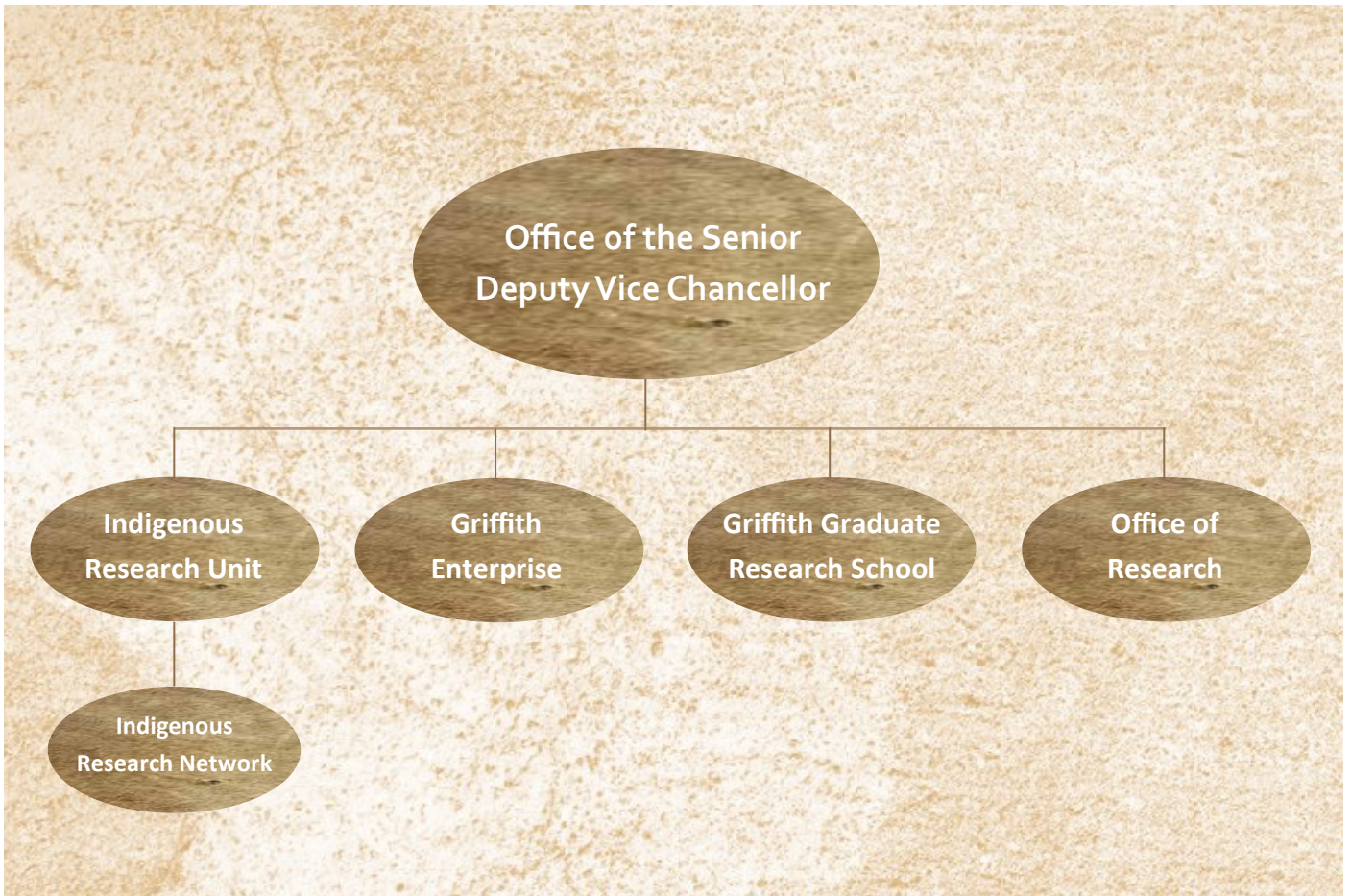
My participation on the Australian Research Council College of Experts provided me with great insight into the review processes of ARC Linkage applications. This experience has helped me to provide advice to colleagues and potential community collaborators around pursuing community-driven research. I also participated on the National Health and Medical Research Council's Indigenous Review Panel. It was a pleasure to work with this panel Chaired by Mr Mick Gooda, Social Justice Commissioner. This process has highlighted to me the importance of due diligence and thorough preparation in relation to engagement with communities and their organisations prior to submitting grant applications.

In late 2015 I had the opportunity to join three significant grant applications around Centres of Research Excellence. Firstly, as Chief Investigator on a Central Queensland University led NHMRC Indigenous research capacity-building application; secondly, Melbourne University and the Doherty Institute invited me to be an Associate Investigator on a Centre of Research Excellence focussed on infectious disease preparedness and emergencies; and finally, as a Deputy Director on a significant ARC Centre of Excellence proposal prepared by Australian Catholic University aimed at empowering Indigenous children in the areas of education, health and wellbeing.

Over the next 12 months I look forward to reviewing our progress over the past four years, continuing to build on existing initiatives and reenergising our strategic focus for the next stage in the IRU's development.

A handwritten signature in black ink, appearing to read 'Adrian Miller'.

About the IRU structure



Our Vision

The IRU aspires to develop a community-driven focus to research and support good quality researcher-driven research. By developing and undertaking research projects in collaboration with communities, researchers and organisations, we aim to further the aspirations and capacity of communities whilst providing a supportive and rigorous environment for research.

Within the IRU vision, Aboriginal and Torres Strait Islander researchers will be supported to undertake research within their chosen discipline. The IRU has been established to build research capacity of Indigenous academics and students at Griffith University. The Unit is working towards meeting the national requirements for research excellence and developing an international research profile.

Our Mission

The Unit will be an advocate for Indigenous appropriate approaches to research, and promote the interests of Aboriginal and Torres Strait Islander peoples, academics, post-graduate and HDR students.

The Indigenous Research Unit is committed to:

Communities

- responding to research needs identified by Indigenous Australian communities and organisations;
- contributing to the development and dissemination of Indigenous knowledges;

Students

- facilitating educational pathways for Indigenous students from undergraduate honours to higher degree research degrees;
- supporting the retention of Griffith University Indigenous Australian graduates into higher degree studies;

Staff

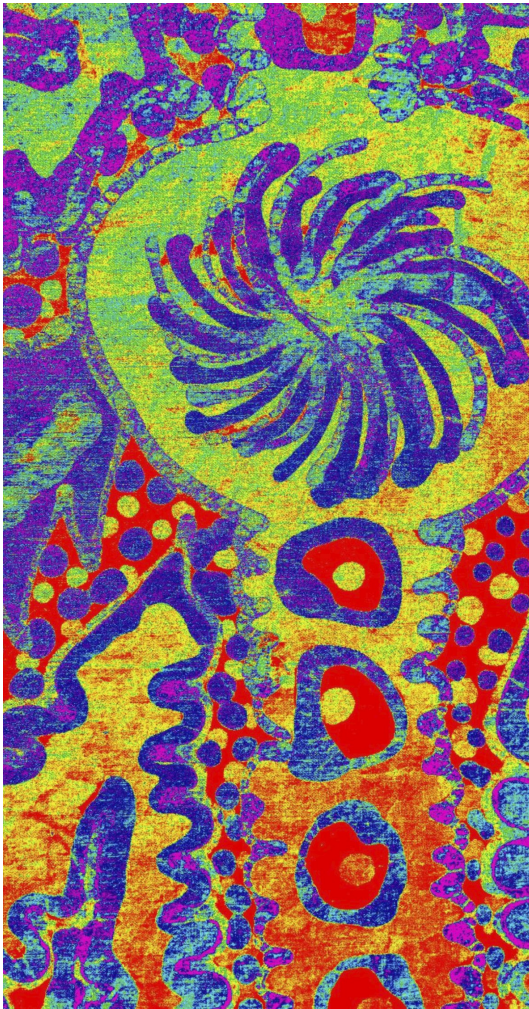
- supporting Indigenous staff in developing their research skills, publications outputs and academic careers;
- facilitating collaborations between Indigenous and non-Indigenous professionals and researchers with interest/expertise in Aboriginal and Torres Strait Islander research;

University

- pursuing grants and funding opportunities to support staff and student research activities;
- embedding Indigenous Australian knowledges and perspectives within innovative work practices whilst meeting the national requirements for research and excellence;
- contributing to scholarly research publications; and
- developing an international research profile.



For the purposes of this report, Aboriginal and Torres Strait Islander will be also respectfully be referred to as Indigenous.



Our Values

In pursuit of our mission, the IRU values are based on being effective, responsible and respectful to fulfil the rights of Indigenous Australians. The IRU also shares the University's values of:

- rigorous standards of scholarship;
- continuous quality improvement;
- accountability as befits a learning organisation;
- commitment to individual rights, ethical standard and social justice;
- participatory decision-making and problem solving;
- lifelong learning and personal development;
- contributing to a robust, equitable and environmentally sustainable society;
- valuing and understanding diversity in society.

Our Goals

The goals of the IRU are to:

- undertake research relevant to Aboriginal and Torres Strait Islander people;
- support and facilitate research capacity development for Indigenous and non-Indigenous Australians;
- contribute to the development of Indigenous knowledges and disseminate where appropriate;
- seek funding and resources to support research relevant to Indigenous Australians.

Our Aims

The aims of the IRU are to:

- create a research community that builds the research capacity of Aboriginal and Torres Strait Islander undergraduates, postgraduates and academic staff;
- engage in interdisciplinary and inter-institute research, which promotes Aboriginal and Torres Strait Islander intellectual authority;
- promote quality research that benefits and demonstrate significance for Aboriginal and Torres Strait Islander people; and
- provide mentoring for all scholars and students who demonstrate excellence in their field of study.



Our Resources

The IRU continues to enjoy its office space in the Patience Thoms Building on the Nathan Campus.

With views over the surrounding bushland, our large open plan office can accommodate up to five visiting researchers in addition to the administrative team.

The boardroom space can be booked by IRN members for meetings, and can be altered to create an intimate workshop environment. Our boardroom is supported by modern technology including a large internet-active project screen and teleconferencing facilities.

The IRU webpages (griffith.edu.au/indigenousresearch) remain a valuable tool by providing an overview of both Indigenous-focussed and research training and development opportunities available to HDR students and staff. It also contains video links which provide a good overview of the pathways to becoming a HDR student at Griffith and the support available to Aboriginal and Torres Strait Islander students. Links to scholarship opportunities are also available through our webpages.

The Unit's Facebook page is another important communication tool. It provides a practical link for us to connect with members of the University and wider community to share relevant information on a broad range of Indigenous research initiatives and activities. Importantly it also provides us with another platform to profile early career researchers and share the work that they are involved in.

Our **Goals** for 2016

- Progress the achievement of targets within the University's Reconciliation Action Plan (research);
- increase collaborations at an international level;
- increase HDR and honours capacity building programs for Indigenous students;
- increase interest within the University in the Indigenous knowledges and research seminar series;
- continue to manage and award internal small grants and conference support funding; and
- expand and increase the depth of current research programs and projects.



Indigenous Research Network members

Title	Given Name	Surname	Department
Full Members			
Professor	Adrian	Miller	IRU
Professor	Boni	Robertson	ICEPP
Professor	Roianne	West	Nursing & Midwifery
A/Professor	Karen	Martin	Education
Dr	Francis	Bobongie	GIER
Dr	Kerry	Bodle	Business
Ms	Heron	Loban	Law
Mr	Harry	Van Issum	Education and Professional Studies
Associate Members			
Mr	Shane	Barnes	GUMURRII
Ms	Jennifer-Leigh	Campbell	GUMURRII
Mr	Stephen	Corporal	Health
Mr	John	Graham	GUMURRII
Ms	Deann	Grant	GUMURRII
Ms	Krystal	Lockwood	Criminology
Mr	Dale	Rowland	GUMURRII
Dr	Monica	Seini	SEET
Ms	Debbie	Woodbridge	GUMURRII

Member Profiles

Professor Adrian Miller

Adrian is of the Jirrbal people of North Queensland and is the Professor of Indigenous Research at Griffith University leading the Indigenous Research Unit and Network. His previous appointments include Professor and Head of School at Southern Cross University's College of Indigenous Australian Peoples, Senior Lecturer at James Cook University, Founding Head of the Department of Indigenous Studies at Macquarie University and Deputy Head of School at James Cook University's School of Indigenous Australian Studies. Professor Miller has a research track record in competitive grants with both the Australian Research Council (ARC) and National Health and Medical Research Council (NHMRC) grant schemes. Over the past 7 years, Professor Miller has collaborated on research grants totalling over 5 million dollars. Professor Miller has supervised undergraduate honours and post-graduate research projects that focus on Indigenous health within medicine, allied health and public health disciplines. He has a strong interest in applied and translational research and twice been awarded Australian College of Educators Teaching Award. He has undertaken leadership roles in community-based and government committees to advocate the views of Aboriginal and Torres Strait Islander families. During the past 20 years in higher education, his experience has been in management, leadership, academic program development, teaching and research. He holds Professorial adjunct appointments with University of the Sunshine Coast, James Cook University and Southern Cross University. His most notable experience was in 2008 as an invited speaker at the Oxford Round Table, Rhodes House in Oxford University. He has made significant contributions to Indigenous health and education. This has been achieved through successful competitive and non-competitive research grants, publication outputs, long-term Indigenous community engagement and public policy development. Research capacity development has been a primary focus for these research activities, which has led to positive outcomes for Indigenous community members and organisations. The highly collaborative manner in which he has undertaken research has contributed to intellectual and methodological developments in health and education fields.



Member Profiles

Professor Boni Roberston



Professor Boni Robertson is a Kabi Kabi woman who is currently serving at Griffith University as a professor for Indigenous Policy. Her work in the areas of social policy, health, law and justice, and community development has earned her great respect in both Indigenous and non-Indigenous communities. She has been the recipient of various awards including the inaugural Bennelong Medal for outstanding leadership in Indigenous Affairs (2002); the Commonwealth Citizenship Medal (2004) and the NAIDOC Excellence Award in 2006. Boni has also authored a collection of reviews and reports relating to Aboriginal and Torres Strait Islander Affairs at the state, national and international level.

Having developed her expertise in Indigenous affairs, she has advised government, media, industry and the community at large, on relevant issues.

Boni sits on a number of state and national committees which include the Multicultural Council of Australia, the Murrii Court in the Queensland Magistracy, the World Indigenous Network Higher Education Consortium, and the National Network of Indigenous Womens Legal Services.

Member Profiles

Professor Roianne West

Born and raised Kalkadoon on her mother's country in North-West Queensland, Roianne has over 20 years of experience in Indigenous health. Her PhD explored factors that impact on successful completions in Higher Education by Indigenous Australians.

Professor West was Nursing Director for Indigenous Health, and her team won a statewide equity award for delivering outstanding health services and enriching diversity throughout the workplace for their work on an Indigenous Bachelor of Midwifery program. She has recently commenced a new role as Professor of First Peoples Health at Griffith University.

Professor West's expertise is in nursing and midwifery workforce development including recruitment, education and training of Indigenous nurses and midwives; and building the cultural capability of non-Indigenous nurses and midwives.

Professor West contributes to ANMAC, and represents CATSINaM on the Health Workforce Australia Aboriginal and Torres Strait Islander health curriculum framework project. She was the 2013 recipient of the Sally Gold Award for her commitment to increasing Indigenous nurses and midwives nationally.



Member Profiles

Associate Professor Karen Martin



Dr Karen Martin is a Noonuccal woman from Minjerripah (North Stradbroke Island - south east Queensland) and also has Bidjara ancestry (central Queensland). She is a qualified early childhood educator who has taught for more than 20 years in Aboriginal Community education services from early childhood, compulsory schooling to adult training in remote, regional and urban areas of Queensland. Karen is a university medallist and has lectured in Aboriginal Australian Studies; Aboriginal education and early childhood education. She has extensive experience in policy; research and programs regarding education; child care and Aboriginal knowledge. Karen is Deputy Chair of the Griffith University HREC and co-leader of the Aboriginal Education-Research with the GIER.

Member Profiles

Dr Francis Bobongie

Based at the Indigenous Research Unit at Griffith University, Francis is a Postdoctoral Research Fellow working with Griffith Institute for Education Research (GIER). Completing her Doctorate of Professional Studies at CQ University in 2011, Francis's focus is on Pacific and Indigenous Studies concentrating on gender and education. She has Australian South Sea Islander and Indigenous ties to the Mackay Community in North Queensland. Francis's Postdoctoral Fellowship is looking at the academic, social and cultural challenges affecting girls who leave their communities in the Torres Strait Islands for boarding schools in regional Queensland.



Member Profiles

Dr Kerry Bodle



Dr Kerry Bodle is an Aboriginal woman whose mother was from Cherbourg and was part of the stolen generation. She obtained a Bachelor in Business (Accounting) in 1998, and then graduated with Honours in 2003. Kerry is the sole Indigenous Accounting Academic in Australia with full membership to the Institute of Public Accountants (IPA) and the Accounting and Finance Association of Australia and New Zealand (AFAANZ).

She completed her PhD in February 2013, titled "The effects of changes in accounting standards on financial ratios: consequences for bankruptcy prediction models". She has been employed at Griffith University since 1999 and is currently a lecturer in the Department of Accounting, Finance and Economics. She is an active member of the following committees: Aboriginal and Torres Strait Islander Advisory Committee, Griffith Aboriginal and Torres Strait Islander Employment Strategy, GBS HDR Aboriginal and Torres Strait Islander Post-graduate Student "Grown Your Own" Strategy committee and Aboriginal and Torres Strait Islander Curriculum Development and Implementation.

Kerry's current research involves:

- The development of a 'de-colonising' theoretical model and conceptual framework to inform new guidelines and standards to enable First Nation Peoples to realize the value of, and obtain commensurate financial and social benefit from, users of communally held Indigenous Cultural Heritage and IP assets" funded by ARC Indigenous Discovery grant (pending).
- The development of a conceptual model for relationship assessment in the context of Aboriginal and Torres Strait Islander franchisees and the franchisor, funded by a NRG.
- Building capacity and pathways to support Aboriginal and Torres Strait Islander peoples to develop employability skills in Financial Management positions - funded by and ARC/OLT grant.

Member Profiles

Ms Heron Loban

Born on Thursday Island, Ms Loban's family connections are to the Mabuiag and Boigu peoples. She is a Senior Lecturer in the Griffith Law School. Ms Loban's academic career has included academic positions held in the Oodgeroo Unit and Faculty of Law at Queensland University of Technology, and the School of Law at James Cook University. Ms Loban has a strong track record in publication in the areas of law and Indigenous studies and success in external grants and State and Commonwealth government consultancies. She was previously a solicitor working in the areas of criminal law, commercial law and native title. Ms Loban has also been the Chairperson of the Indigenous Consumer Assistance Network Ltd and Deputy Chairperson of the Centre for Appropriate Technology Ltd. She was appointed by the Minister for Communications from 2011-2013 as a member of the Regional Telecommunications Independent Review Committee and is currently a member of the Australian Broadcasting Corporation Advisory Committee and the Indigenous Advisory Committee of the Australian Communications Consumer Action Network Ltd.



Member Profiles

Mr Harry Van Issum



Harry Van Issum is a Woppaburra man from the Darambal Language Group in Central Queensland. Harry's first degree was a Diploma of Teaching at Griffith University and since then he has completed his Bachelor of Education and Master of Education and is currently completing his PhD. He has spent over 20 years teaching and researching in the area of Aboriginal and Torres Strait Islander education. He was winner of a National Indigenous Staff Scholarship in 2007 and has recently received the Griffith Excellence in Teaching Award 2015.

He is a lecturer in the School of Education and Professional Studies (EPS) and teaches Aboriginal history, culture and pedagogy. He is Chair of the First Australian Committee and member of Equity Committee and Griffith Institute of Educational Research attached to EPS. He is also a member of the University's Aboriginal and Torres Strait Islander Advisory Committee, Human Research Ethics Committee and the Aboriginal and Torres Strait Islander dedicated Memorial Committee Queensland. He also spent four years on the Queensland Indigenous Education Consultative Committee advising across a range of education issues. Research interests include pedagogical practices, pre-service teacher education and embedding Aboriginal and Torres Strait Islander content into school and tertiary environments.

Outside the University he is engaged in the World Indigenous Higher Education Network, Cooee Elders and the Murri Court in the Bayside region. Culturally he is involved in Woppaburra Land and Sea-country management and traditional use of marine resources.



Research Highlights

The Unit's research highlights for 2015:

- Dr Kerry Bodle, Department of Accounting, Finance and Economics, received the Dean's Certificate of Commendation;
- Mr Harry Van Issum received the 2015 Griffith Award for Excellence in Teaching - Priority Area Award: Cultural Inclusiveness;
- Mr Stephen Corporal presented at the 3rd International Indigenous Social Work (3IISW) Conference in Darwin;
- The continuation of the collaboration between GSBRC and the IRU on the Indigenous Knowledges and Research Seminar Series;
- Dr Francis Bobongie's appointment as the University's first Aboriginal and Torres Strait Islander Postdoctoral Research Fellow; and
- Professor Adrian Miller's appointment to the Australian Research Council's College of Experts.

Collaborations

The IRU collaborated with the following partners during 2015:

- Professor Anna Stewart (Director, Key Centre for Ethics, Law, Justice and Governance), Dr John Rynne (Key Centre for Ethics, Law, Justice and Governance), Professor Miller and members of the School of Criminology worked together to establish a First People's Justice Research Network at the University.
- Professor Kate Hutchings (Griffith Business School), together with Professor Adrian Miller, Dr Kerry Bodle and Mr John Graham, continued their collaboration with colleagues at James Cook University on the HDR Attraction and Retention of Indigenous students research project.
- Professor Roianne West and Mr Shane Barnes (Manager, GUMURRII SSU), in collaboration with the IUIH hosted 120 Arizona State University (ASU) nursing students and staff seeking an Indigenous Health experience on Friday 29 May 2015.
- The Indigenous Research Unit collaborated with the GSBRC to offer an "Indigenous Knowledges and Research Seminar Series" within the University. Presentations by key IRU researchers and visiting national and international academics included:
 - * "Why Living Law Matters: Indigenous Law, Traditional Knowledge and Intercultural Justice" presented by Dr Brendan Tobin (Research Fellow, Griffith Law School)
 - * "Scientific and Indigenous Knowledge: The nature of explanation" presented by Professor Dave Lambert (Professor of Evolutionary Biology, Griffith University)
 - * "Evaluation Research: Indigenous Well-being" presented by Dr Chris Fleming (Director, MBA Program)
 - * "Using Story-telling as an Ethnographic Approach to Researching the Educational Experiences of Disadvantaged Girls" presented by Dr Francis Bobongie (Griffith Institute for Educational Research)
 - * "Improving Food Security and Well-being in Indigenous Communities through Agroforestry Stewardship Practices using Indigenous Knowledge and Western Science as Complementary Constructs " presented by Professor Len Tsuji (Professor of Environment & Health, University of Toronto, Canada)
 - * "Guidelines for Research with Indigenous Communities" presented by Professor Adrian Miller (Professor of Indigenous Research, Griffith University)

Visiting Academics

- Professor Miller welcomed visiting academic Dr Nadia Charania from the Auckland University of Technology's Department of Public Health in March 2015, and discussed potential collaborative opportunities;
- Professor Len Tsuji, University of Toronto visited the Indigenous Research Unit from 20 to 23 April 2015 and presented a seminar as part of the GSBRC / IRU collaboration; and
- Professor Miller met with Ms Rhonda Friesen (Manager, International Office, University of Manitoba) and Ms Heidi Piper (Director, International Office) during Ms Friesen's visit to the University in October 2015 to discuss Indigenous Health.



Research grants

The IRU has once again been highly active throughout 2015 increasing our research profile both nationally and internationally. The tables on the following pages overview specific research projects and the funding received. We look forward to a busy 2016 following the submission of a number of grant proposals towards the end of 2015.

The IRU awarded \$20,400 in Small Research Grant and Conference Support in 2015:

IRU Small Research Grant Support:

- Dr Francis Bobongie - "What are the academic, social and cultural challenges facing students (specifically girls) who leave their Torres Strait Islander communities to study at Boarding Schools in Queensland" (\$5000)
- Mr Harry van Issum – "Parents and Learning (PaL) is a home-based program" (\$4830)
- Dr Kerry Bodle - "Attraction, Retention and Completion of Aboriginal and Torres Strait Islander Peoples HDR students" (extension of original project) (\$4870)
- Ms Heron Loban - "A Legal Framework for the Recognition of Torres Strait Islander Traditional Adoption" (\$4700)

IRU Conference Support:

- Mr Stephen Corporal - Presentation at the 3rd International Indigenous Social Work (3IISW) Conference in Darwin entitled "We Still Community: Indigenous Methodologies Researching Indigenous Students" (\$1000)

Table 1.

Successful grants

Title of grant, contract or project	Funds Provider	Applied Amount	Chief investigators (in order)
Deaths in young people involved in the youth justice system: towards evidence-based prevention	NHMRC	\$620,704.80	Kinner S, Borschmann R, Spittal M, Miller A, Cadet-James Y, Clough A, Sawyer S
	Total	\$620,704.80	

Table 2.

Projects in progress

Title of grant, contract or project	Funds Provider	Applied Amount	Chief investigators (in order)
PROPOSAL ID 1042662 : Understanding T cell Immunity Against Pandemic and Seasonal Influenza Viruses in the Indigenous Population (University of Melbourne lead institution)	NHMRC 2013-16	\$833,522	Kedzierska K, Tong S, Miller A
PROPOSAL ID 1042532 : Evaluation of Alcohol Management Plans, Cape York, North QLD	NHMRC 2013-15	\$626,395	Clough A, Margolis S, Muller R, Doran C, Miller A, Shakeshaft A
PROPOSAL ID IN130100023 : Inspiring Indigenous youth to build resilience and sustain participation with education and employment: the role of targeted mentoring support	ARC 2013-15	\$515,000	Bainbridge R, Tsey K, Miller A, Doran C, Shakeshaft A, Walker R (withdrawn)
Securing the essential: assisting Indigenous communities and their service providers to sustainably manage water and energy supply. (Grant No. LP140100118)	ARC (Linkage Grant)	\$241,366	Stewart R, Tan P, Fielding K, Miller A, Beard N, Peach G, Jenkins M, McDowell P
Establishing the provenance of Torres Strait Islander remains: genetics, craniometrics and isotopes. (Grant No. LP140100387)	ARC (Linkage Grant)	\$740,880	Westaway M, Wright D, Lambert D, Miller A, Fry B, Clegg M, Collard M, Sankarasubramanian S, Li R, Willerslev E, Hadnutt N
Roundtable: Future Direction into Ethical Review of Health Research Involving Aboriginal and Torres Strait Islander Peoples in Queensland	The Lowitja Institute	\$15,000	West R, Miller A
Evaluation: Aboriginal Children and Family Justice Program	Jesuit Social Services	\$60,000	Manning M, Fleming C, Homel R, Miller A
	Total	\$3,032,163	

Table 3.

Unsuccessful proposals

Title of grant, contract or project	Funds Provider	Applied Amount	Chief investigators (in order)
From the Northern edge of subarctic Canada to the subtropics of Australia: Improving food security and wellbeing in Indigenous communities through agroforestry stewardship practices using Indigenous knowledge and western science as complementary constructs (CIHR Operating Grant)	CIHR	\$1,264,895	Tsuji L, Sarkar A, Oelbermann M, Gough W, Miller A, West R
	Total	\$1,264,895	

Table 4.

Proposals total amount of research activity

Research Activity	Funding
Successful grants	\$620,704.80
Projects in progress	\$3,032,163.00
Unsuccessful proposals	\$1,264,895.00
Total	\$4,917,762.80

Publications

1. Fleming C, Manning M, **Miller A** (Eds). The Routledge Handbook Of Indigenous Wellbeing. Routledge, Taylor Francis Group: Singapore (under contract).
2. Power T, Sherwood J, Geia L, **West R**. Indigenous leadership in nursing: Speaking life into each other's spirits. *Leadership and Nursing: Contemporary perspectives 2015*, Elsevier Australia, 141-152, 2015.
3. **Lockwood K**, Hart T, Stewart. First Nations Peoples and judicial sentencing: Main effects and the impact of contextual variability. *British Journal of Criminology*, 5 March 2015.
4. Wheeler-Jones C, Howlett C, **Seini M**, Burns G. Media constructions of Aboriginality: Implications for engagement with coal seam gas development in Australia. *Australian Geographer*, 21 Apr 2015.
5. Speare R, **Miller A**, Page W. Strongyloidiasis: a case for notification in Australia? *The Medical Journal of Australia*, 1 June 2015.
6. Saunders V, **West R**, Usher K. Applying Indigenist Research Methodologies in Health Research: Experiences in the Borderlands. *The Australian Journal of Indigenous Education*, published online 22 Jul 2015.
7. Bainbridge R, Tsey K, McCalman J, Kinchin I, Saunders V, Watkin Lui F, Cadet-James Y, **Miller A**, Lawson K. No one's discussing the elephant in the room: contemplating questions of research impact and benefit in Aboriginal and Torres Strait Islander Australian health research. *BMC Public Health*, 23 July 2015.
8. **Miller A**, Massey PD, Judd J, Kelly J, Durrheim DN, Clough AR, Speare R, Siggers S. Using a participatory action research framework to listen to Aboriginal and Torres Strait Islander people in Australia about pandemic influenza. *Rural and Remote Health*, 30 July 2015.
9. Clemens EB, Grant EJ, Wang Z, Gras S, Tipping P, Rossjohn J, **Miller A**, Steven YC, Tong SYC and Kedzierska K. Towards identification of immune and genetic correlates of severe influenza disease in Indigenous Australians. *Immunology and Cell Biology*, accepted article preview 23 Oct 2015.
10. Melchert B, Gray M, **Miller A**. Educator Perspectives on Indigenous Cultural Content in an Occupational Therapy Curriculum. *The Australian Journal of Indigenous Education*, accepted 29 Nov 2015.
11. Page W, Shield J, O'Donahoo F, **Miller A**, Judd J, Speare R. Strongyloidiasis in Oceania. Chapter 6 in Ed. A. Loukas. *Neglected Tropical Diseases - Oceania*. Springer, SPi Global. (in press).
12. **Martin K**. Family literacies and young Indigenous Australian children in the 21st Century: the intersection of culture and identity, homes and community. In Hare, J., Anderson, J. & Fredericks, N. (eds). *The intersection of culture, language and literacy*. Vancouver: UBC Press (in press).
13. **Martin K**. Humpty Dumpty – teaching method or postcolonial method: what do we know about power, voice and identity within early childhood education in the 21st Century? Flear, M. & van Oers, B. (eds). *International handbook on early childhood education*. Springer: The Netherlands (in press).
14. **Martin K & Fleet A**. Aboriginal early childhood education in Australia: voices and visions. Mt Victoria: Pademelon Press, manuscript (submitted).

Invited Memberships

on Advisory Boards

- Professor Miller was appointed to the 2015 Australian Research Council (ARC) College of Experts.
- Professor Miller accepted an invitation to serve as a member of the 2015 NHMRC Project Grants Grant Review Panel.
- Professor Adrian Miller accepted an invitation to join the Scientific Advisory Board (SAB) on the National Health and Medical Research Council (NHMRC) funded Centre of Research Excellence (CRE) in Population Health Research, titled "Immunisation in under Studied and Special Risk Populations: Closing the Gap in Knowledge through a Multidisciplinary Approach".
- Professor Adrian Miller was asked to represent the University on a newly established Cross University Indigenous Ethics Committee between UQ, QUT and Griffith.
- Professor Miller accepted an invitation to join the Queensland Conservatorium Research Centre Local Advisory Board.
- Professor Miller accepted an invitation to be on the international journal reviewer panel of the International Journal of Rural and Remote Health.
- Professor Miller accepted an invitation to serve as a member on The Lowitja Institute's "Community capability and the social determinants of health" Program Committee.
- Professor Miller continued on as a member of the Aboriginal and Torres Strait Islander Advisory Committee.
- Professor Miller continued on as a member of the Human Research Ethics Committee.
- Professor Miller continued on as a member of the Griffith University Equity Committee.
- Professor Miller continued on as a member of the Griffith University First Peoples Employment Committee.
- Professor Miller continued on as a member of the Scientific Advisory Board for NHMRC Centre for Research Excellence: Improving outcomes of vaccination in high risk and/or marginalised populations.
- Professor West accepted an invitation to serve as a member on The Lowitja Institute's "A health workforce to address Aboriginal and Torres Strait Islander health" Program Committee.
- Associate Professor Karen Martin continued on as Deputy Chair: Longitudinal Study of Indigenous Children, Department of Social Services.
- Associate Professor Karen Martin continued on as Deputy Chair: HREC, Griffith University.

Invited Lectures/Forums/ Seminars

1. Seini M. Ontological Pluralism Indigenising the higher education curriculum. Invited speaker. International Conference on Environmental, Cultural, Economic and Social Sustainability, Copenhagen Denmark, 21-23 January 2015.
2. Miller A. Invited participant. Innovative Research Universities Launch: Statement of Intent, Parliament House, Canberra ACT, February 2015.
3. Miller A. Strongyloides stercoralis: Systematic Review of Barriers to Controlling Strongyloidiasis for Australian Indigenous Communities. Invited speaker. Australasian Society for Infectious Diseases, Parasitology and Tropical Medicine Master Class, Fremantle Hospital, Perth WA, 6-7 March 2015.
4. Miller A. Invited participant. The Aboriginal and Torres Strait Islander Higher Education Advisory Council and the Department of Education and Training's Aboriginal and Torres Strait Islander Higher Education Policy Forum, Canberra ACT, April 2015.
5. Martin K. Co-ordinator. National Symposium for the role of Aboriginal Knowledges in higher education in the 21st Century, Brisbane QLD, 19 June 2015.
6. Bodle K. Students' perception of e-portfolios as a reflective assessment tool in a dual mode indigenous business course. Keynote speaker. 7th International Conference on Education and New Learning Technologies (EDULEARN15), Barcelona Spain, 6-8 July 2015.
7. Miller A. Facilitator. The Lowitja Institute Workshop for the Aboriginal and Torres Strait Islander health research workforce, Melbourne VIC, 21 July 2015.
8. Mohamed J, West R. Growing the Indigenous nursing workforce: an Australian experience. Invited speaker. New Zealand Nurses Organisation 2015 Indigenous Nurses Conference, Tāmaki Makaurau NZ, 7-8 August 2015.
9. Martin K. Invited participant. Long term policy planning: Co-design workshop, Australian Government Department of Social Services, 2-3 September 2015.
10. West R. Keynote Speaker. Gold Coast Nursing and Midwifery Symposium, Nurses and Midwives working together towards tomorrow, Gold Coast QLD, 4-5 September 2015.
11. West R. Cultural safety education and competence: fundamental to developing super midwives in First Peoples health contexts. Keynote Speaker. Australian College of Midwives 19th Biennial Conference 2015 - Super Midwives Making a Difference, Gold Coast QLD, 5-8 October 2015.
12. West R. The power of narratives in improving Australia's First Peoples' health outcomes. Invited speaker. 33rd National CRANaplus Conference, Telling Tales, The Power of the Narrative, Alice Springs NT, 15-17 October 2015.
13. Miller A. Chronic Disease Management across the Lifespan for Aboriginal and Torres Strait Islander People. Facilitator. The Aboriginal and Torres Strait Islander Health Unit, Queensland Department of Health, 6 November 2015.

Our People, Our Stories, Our Way



Indigenous Research Unit

The Indigenous Research Unit logo represents all that the Unit stands for.

Our community: The IRU aims to develop and maintain productive relationships with Aboriginal and Torres Strait Islander people within the University. Through these relationships career and educational pathways are supported, with a specific focus on community-driven and applied research. This is represented by the innermost circle of black dots in the illustration. This circle also represents a meeting place.

Strong partnerships: IRU members are based within various faculties and schools and have connections with other research centres. Our emphasis is on strong partnerships that will increase opportunities for Aboriginal and Torres Strait Islander people in terms of career and educational prospects. The white circles that are connected to our Community from our participation within it - the black dot and the circles become part of our foundation by the red and black lines embracing the full structure.

Community driven research: The IRU aims to pursue projects that have been identified by the community. This requires proactive dialogue and engagement with community members. Each circle outside the main internal structure represents different Communities that have a pathway into the Network (black curved line with white dots) and an outcome from the relationship that will help shape the community (black line with a red line embedded). These pathways are a cycle representing a dynamic relationship that can be strengthened over time.

Growing our own: The Unit aims to grow its research portfolio, resulting in strong relationships with various Aboriginal and Torres Strait Islander Communities. From this research we will also develop our own approaches to research and grow the body of knowledge in this area. We will also advocate and work towards 'growing our own' Aboriginal and Torres Strait Islander academics and postgraduate students by facilitating pathways from undergraduate to postgraduate studies in partnership with the GUMURRII Student Support Unit. The growth of the Network is represented by the grey lines in the background reach outwards and expanding.