

Constructing Building Integrity: Raising Standards Through Professionalism

**Integrity System Maps:
Landscape Architects**

October 2024

Compiled by

Dr. Katja Cooper

Prof. Cheryl Desha

Griffith University, Australia



Overview

This fact sheet contains the high-level and detailed integrity system maps for landscape architects. It is an additional resource document that should be read in conjunction with the industry fact sheet for landscape architects.

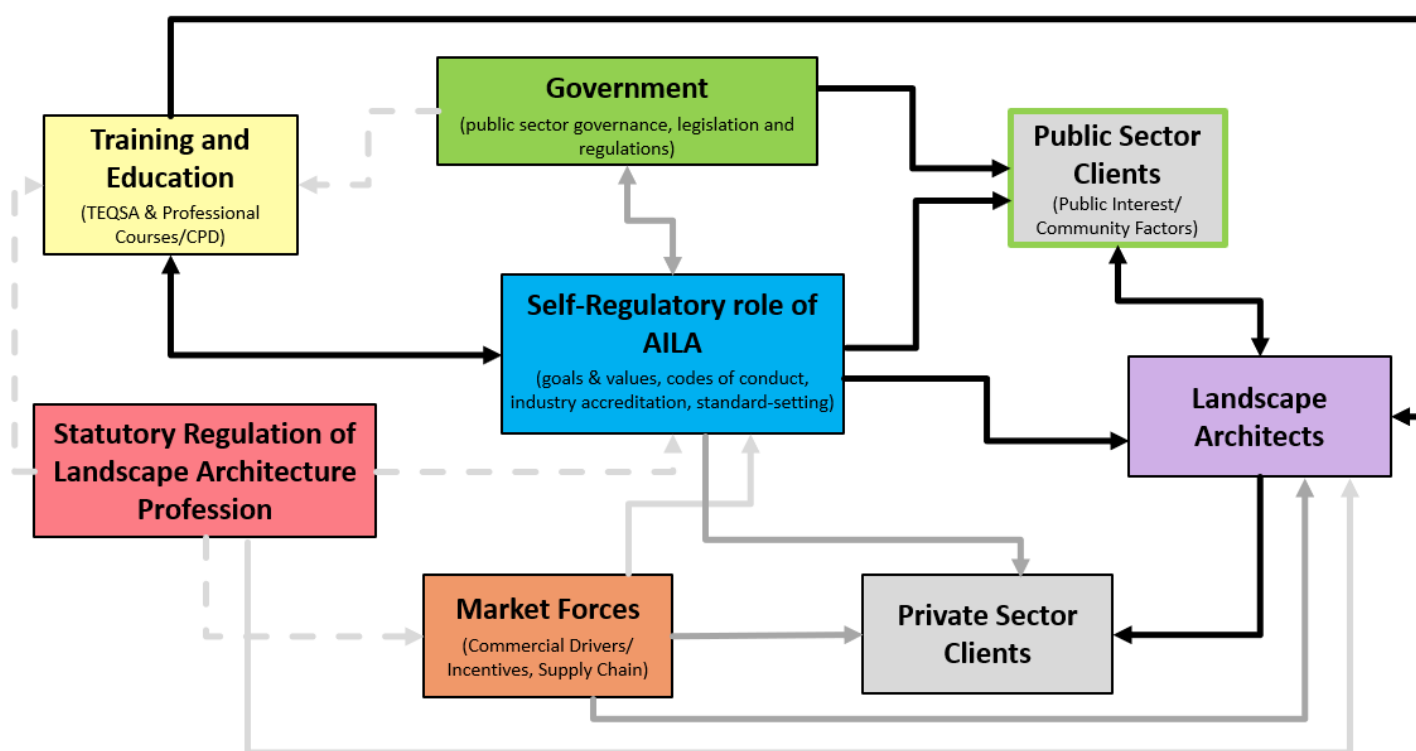
Integrity Systems

Professional integrity systems are made up of mutually supportive norms, institutions and mechanisms that work together to promote high ethical and professional standards. They are comprised of a combination of state institutions and agencies (courts, parliament, prosecutors), state watchdog agencies (industry regulators, statutory registration bodies, ombudsman, auditor general, parliamentary committees), non-governmental organisations (NGOs), laws, norms (e.g. codified acceptable standards), and incentive mechanisms.

Integrity systems aim to make the desired behaviour clear and easy to follow, while also making it hard and risky to do the wrong thing. The integrity system approach recognises that ethics and integrity cannot be left to individual professionals, and that a profession's values, and the public goods it delivers need to be supported by ethical norms, legal regulation, economic incentives and institutional design.

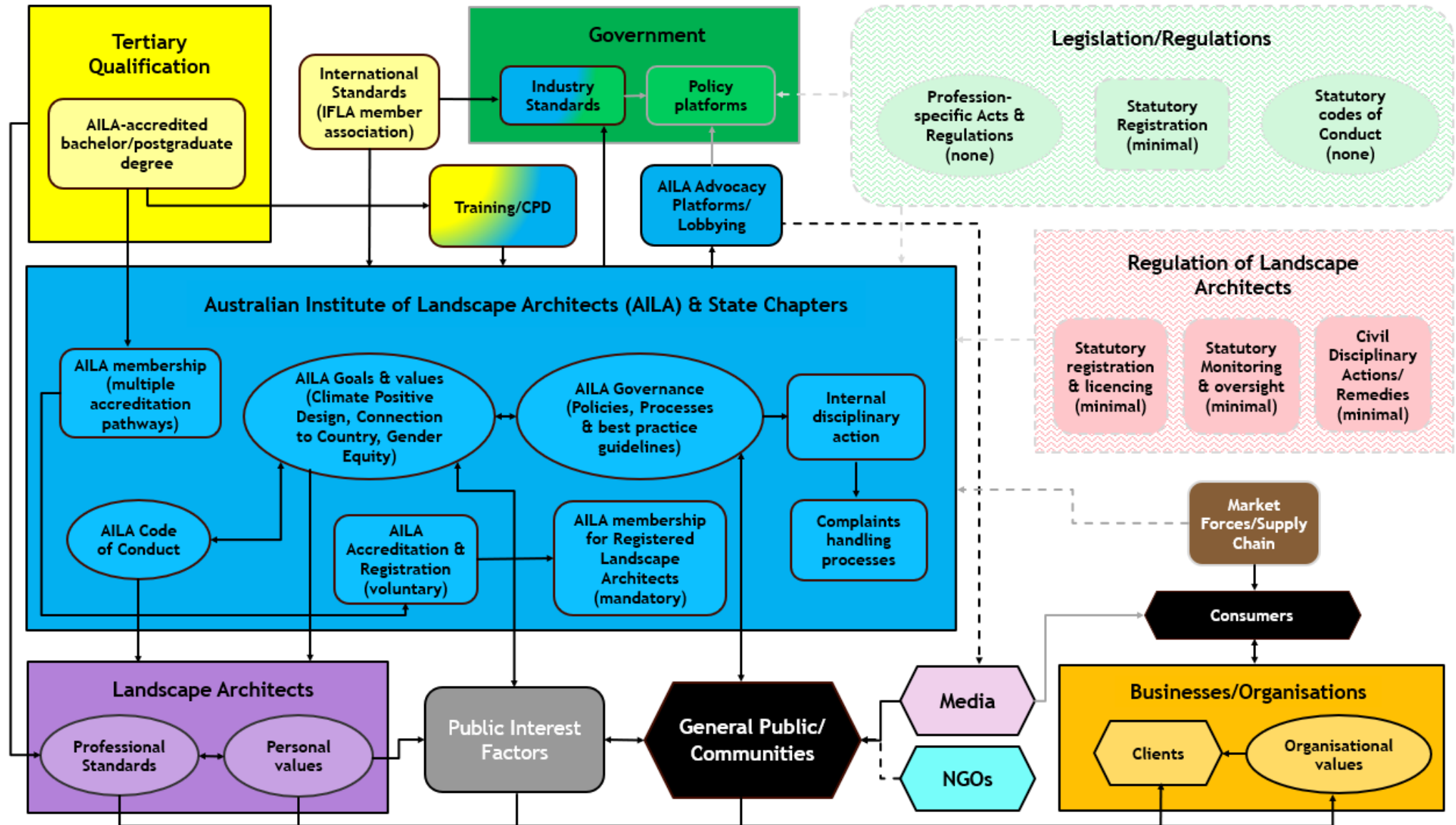
To identify the strengths and weaknesses in the integrity system for landscape architects, two maps were developed: a high-level map covering the system's core components (**Figure 1**); and a detailed map that provides an in-depth summary of the profession's integrity system (**Figure 2**).

Fig. 1: High-level integrity system map - landscape architects



LEGEND					
	Direct influence (strong, two-way)		Indirect influence (strong, two-way)		Indirect influence (strong, one-way)
	Direct influence (moderate, two-way)		Indirect influence (moderate, two-way)		Indirect influence (moderate, one-way)
	Direct influence (weak, two-way)		Indirect influence (moderate, two-way)		Indirect influence (moderate, one-way)

Fig. 2: Detailed integrity system map - landscape architects



ABBREVIATIONS			
AILA	Australian Institute of Landscape Architects	NGOs	Non-Governmental Associations
IFLA	International Federation of Landscape Architects		

FURTHER READING

Breakey, H. & Charles Sampford (2018) 'Integrity Systems' *Professions Research Library* Professional Standards Councils. <https://www.psc.gov.au/research-library/professions/integrity-systems>

Pope, J. (2000) *Confronting Corruption: The elements of a National Integrity System* (The TI Source Book), Transparency International. <https://bsahely.com/wp-content/uploads/2016/10/the-ti-source-book-20001.pdf>

Sampford, C., Smith, R., & Brown, A. J. (2005). From Greek Temple to Bird's Nest: Towards A Theory of Coherence and Mutual Accountability for National Integrity Systems. *Australian Journal of Public Administration*, 64(2), 96-108.

CITATION

Cooper, K. & Desha, C. (2024). *Industry Fact Sheet: Landscape Architects*. Griffith University, October 2024.

PROJECT RESEARCH

Sampford, C., Burton, P., Desha, C., Reid, S., Stewart, R., Hampson, K., Phillimore, J., Easthope, H. Ostwald, M., London, K., Pablo, Z., Breakey, H., Cooper, K., Sahin, O., Bazen, E., Gillon, C., Bok, B., Gow, P. (2024), *Constructing Building Integrity: Raising Standards through Professionalism. Final Industry Report*. Griffith University, August 2024. https://www.griffith.edu.au/_data/assets/pdf_file/0029/2007659/ARC-LP-CBI-Final-V2.pdf

Additional research arising from the project (including the Final Industry Report) can be found at: <https://www.griffith.edu.au/law-futures-centre/institute-ethics-law-governance/our-research/construction-building-integrity>

