

Introduction

This guide will show you how to connect to Griffith University (Griffith) Wi-Fi on Android Devices. Please note Google devices need the SecureW2 JoinNow app to connect. **Do not remove this app or Griffith Wi-Fi will immediately terminate.**

Screen shots may differ depending on device and software versions. We recommend updating your device to the latest version prior to connecting or the steps may differ.

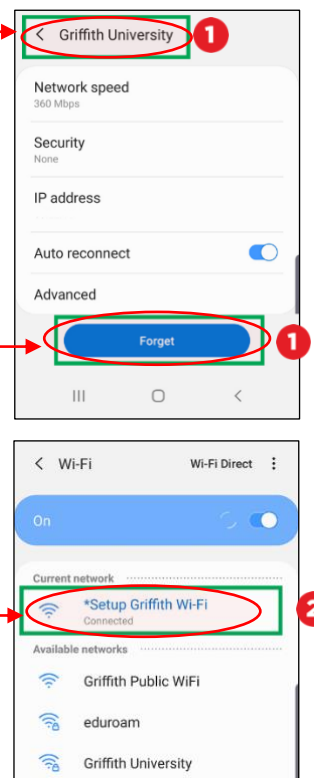
You must be on campus to set up and access the Griffith University Wi-Fi network. Wi-Fi must be turned on during the setup process, and you need to close out of all applications that use Wi-Fi/internet access prior to following these guides (including Outlook and Microsoft 365).

Step 1: Remove the existing Griffith Wi-Fi network on your device

- This step **must** be completed if you have used the network previously, or the setup process will fail. If you have never connected before, skip to **step 2**.

1 Go to **Wi-Fi settings** > select **Griffith University Wi-Fi** > then select **Forget**.

2 Under device Wi-Fi settings, select ***Setup Griffith Wi-Fi**.



Step 2: Connect to Griffith Wi-Fi

1 Open a web browser and go to **wifi.griffith.edu.au**.

2 A prompt screen asking you to select a download source and install app will appear. Select **Google Play Store (App)** from the drop-down list and select **Download**.

3 Select **Install** to install SecureW2 JoinNow app on your device.

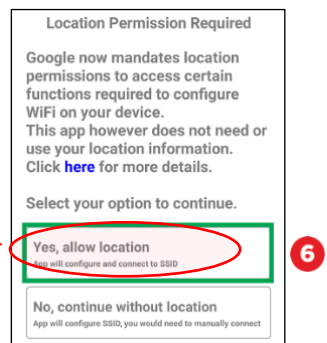
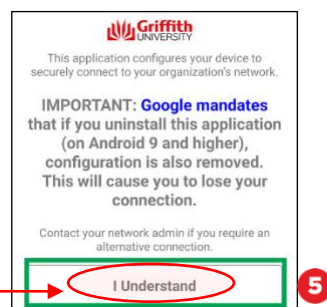
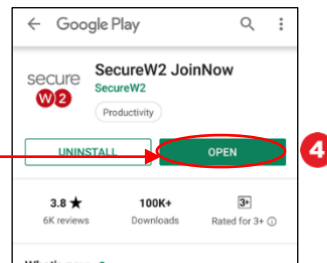
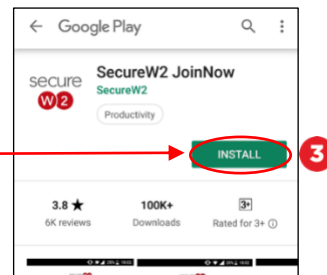
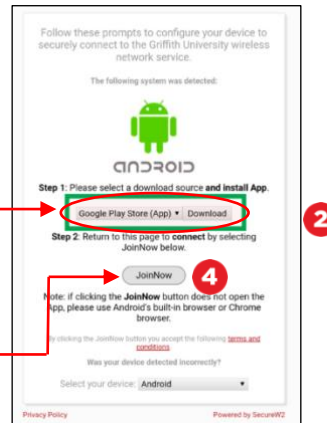
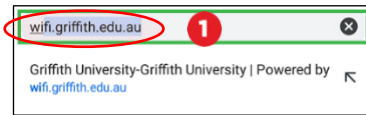
4 Select **Open** on the SecureW2 JoinNow app. The Wi-Fi configuration will automatically enroll.

If your device does not automatically enroll, go back to browser in **step 2.2** and select **Join Now**.

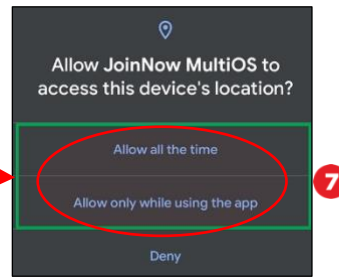
5 Is your operating system running Android 9 or above? Select **I understand**.

If not running on Android 9, go to **Step 3**.

6 Select **Yes, Allow Location**. If you do not select yes during the setup process, you will need to manually connect your Wi-Fi.



- 7** Select either **Allow all the time** or **Allow only while using the app**. This is a personal preference and note you may be asked to turn on location services for a better experience.

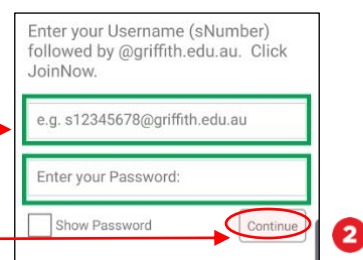


Step 3: Authenticate and complete Wi-Fi setup

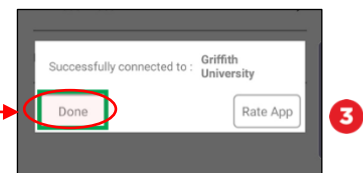
- 1** Select **Next** and then enter your Griffith sign-in credentials.
- 2** Enter your Griffith username followed by **@griffith.edu.au**, then your password and select **Continue**.
- These credentials will also provide you with access to the eduroam network when you visit other educational institutions in the eduroam federation. Find out more at griffith.edu.au/eduroam.



- 3** Select **Done**. If you are not successfully connected at this stage, return to **step 2.2** and select **JoinNow** button to reinstall security settings.



- 4** Go back into your **Wi-Fi settings**, and check that **Griffith University** is set as your preferred network (it may take up to one minute for the network to appear).



- 5** Close all setup browsers. You can now access Griffith Wi-Fi.

