



December 2017

In this issue:

Our Mission	1
Merry Christmas	1
11th International Conference on Immunopharmacology and Immunotoxicology	2
Publications Accepted	2

Postal Address:

Griffith University
National Centre for
Neuroimmunology and
Emerging Diseases
Parklands Drive
Mailbox 68
Level 9 Building G40
SOUTHPORT QLD 4222



[Click Here](#)

Our Mission

The National Centre for Neuroimmunology and Emerging Diseases (NCNED) is a research team located in the Griffith Health Centre at Griffith University on the Gold Coast. Led by Professors Sonya Marshall-Gradisnik and Donald Staines, the team has a focus on Chronic Fatigue Syndrome/Myalgic Encephalomyelitis (CFS/ME).

Our mission is to translate research findings into preventative medicine, social and clinical care, and public health outcomes. By collaborating with local, national and international research institutes, we aim to create sustained improvements in health and health care for not only those affected by CFS/ME but also other immune disorders.

MERRY CHRISTMAS

TO ALL OUR SUPPORTERS



The team at NCNED sincerely thank you all for your ongoing support and wish you a happy Christmas and a safe and fulfilling New Year.

NCNED contact:

(07) 5678 9283 or ncned@griffith.edu.au

11th International Conference on Immunopharmacology and Immunotoxicology

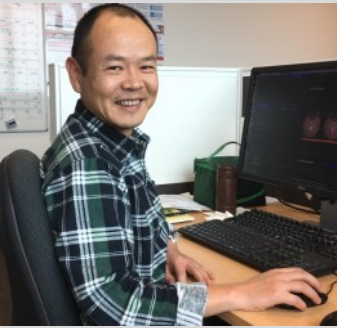


Miss Natalie Eaton, Dr Helene Cabanas and Miss Cassandra Balinas attended the 11th International Conference on Immunopharmacology and Immunotoxicology held in Melbourne in November 2017 which had the theme “Novel Development and Applications in Immunology and Immunopharmacology.”

Natalie’s presentation “Rituximab impedes natural killer cell function in Chronic Fatigue Syndrome/Myalgic Encephalomyelitis patients: A pilot *in vitro* investigation” was very well received by the audience.

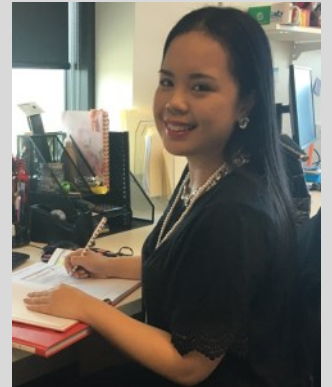
Publications Accepted

Congratulations to Dr Zack Shan and Ms Cassandra Balinas who have been successful in having publications accepted to *Brain Connectivity* and the *Asian Pacific Journal of Allergy and Immunology* respectfully.



Shan SY, Finegan K, Bhuta B, Ireland T, Staines DR, Marshall-Gradisnik S, Barnden LR: Decreased connectivity and complex activity in default mode network with chronic fatigue syndrome. *Brain Connectivity*. Accepted November 2017.

Balinas C, Nguyen T, Johnston S, Smith P, Staines D, Marshall-Gradisnik S: Investigation of mast cell toll-like receptor 3 in Chronic Fatigue Syndrome/Myalgic Encephalomyelitis and Systemic Mastocytosis participants using the novel application of autoMACS magnetic separation and flow cytometry. *Asian Pacific Journal of Allergy and Immunology*. Accepted October 2017.



Thank you to the Stafford Fox Medical Research Foundation, Mr Douglas Stuff, the Mason Foundation, the Alison Hunter Memorial Foundation, the Blake Beckett Foundation, Change for ME Charity, Qld ME/CFS/FM Support Association Qld Inc. and the ACT ME/Chronic Fatigue Syndrome Society.

