



# Indigenous Research Unit

2018 **Annual** Report

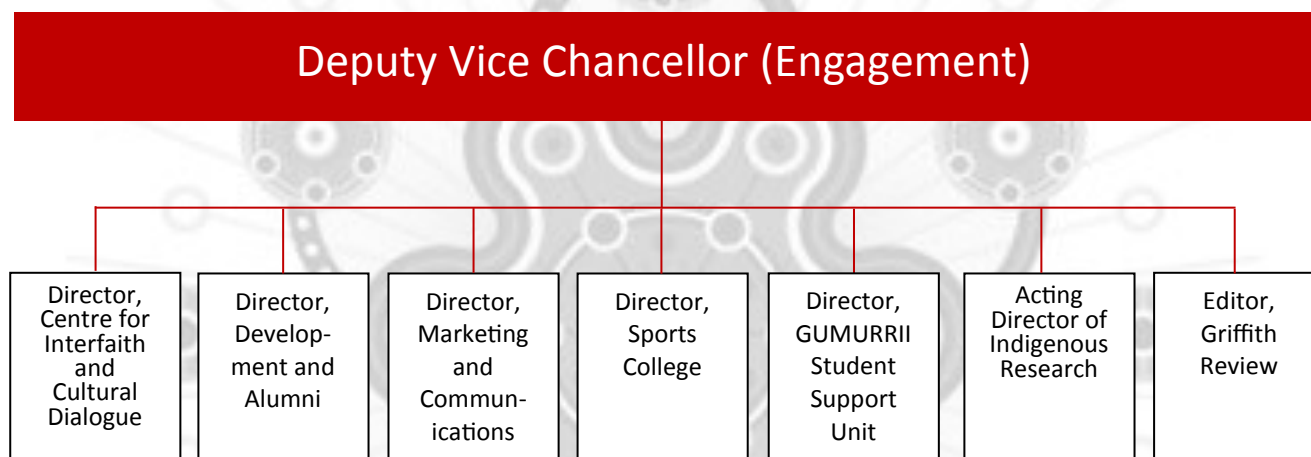
# Contents

|  |    |
|--|----|
| The IRU structure _____  | 3  |
| Our overarching vision _____   | 4  |
| Our past, present and future _____   | 5  |
| Our goals for 2019 _____   | 7  |
| Indigenous Research Network members _____  | 8  |
| Member Profiles  |    |
| Professor Boni Robertson _____   | 9  |
| Professor Roianne West _____   | 10 |
| Associate Professor Donna Leslie _____   | 11 |
| Dr Kerry Bodle _____   | 12 |
| Dr Harry Van Issum _____   | 13 |
| Ms Heron Loban _____   | 14 |
| Research Highlights _____  | 15 |
| Collaborations _____   | 16 |
| Indigenous Higher Degree by Research (HDR) Candidates _____  | 17 |
| Kungullanji Undergraduate Research Program _____   | 18 |
| Research Grants _____  | 20 |
| Publications (by members) _____  | 21 |
| Publications with a First Peoples focus undertaken by members of the wider Griffith University community _____ | 22 |
| Research grants with a First Peoples focus awarded to members of the wider Griffith University community _____ | 28 |
| Invited Memberships on Advisory Boards _____   | 31 |
| Invited Lectures/ Forums / Seminars _____  | 32 |
| Our People, Our Stories, Our Way _____   | 33 |

# the IRU structure

Following the departure of the Academic Director of Indigenous Education and Research in early July 2017, the IRU and GUMURRII reverted to their original Unit status under the Deputy Vice Chancellor (Engagement).

With the Indigenous leadership review having taken place in September 2017 we look forward to the appointment of a new Professor of Indigenous Research during 2018.



# Our Overarching **Vision**

Since its inception in 2010, the Indigenous Research Unit has maintained a philosophy of creating and maintaining productive relationships that develop into strong partnerships. We aspire to develop a community of researchers and scholars that is collaborative, supportive and engaging, and are committed to a community-based approach to lifelong learning, organisational engagement and educational advancement. The IRU continues to work towards supporting our researchers and candidates in developing their research profiles on both a national and international level.



The Indigenous Research Unit aims to:

- create a supportive and engaged community of Indigenous academics, students and general staff within the University;
- establish strong partnerships within the University to foster collaborative research projects and activities, and increase opportunities for Indigenous people in terms of career and educational aspirations;
- “Grow our Own” researchers - support career and educational pathways for Aboriginal and Torres Strait Islander academics, and in partnership with GUMURRII, for HDR candidates and research-interested undergraduate students;
- create positive relationships between Indigenous and non-Indigenous researchers and entities within the University;
- develop and maintain strong partnerships with our Communities external to the University to create innovative research programs focused on “community-driven research”.

With all of this in focus we seek to achieve the best possible outcomes for everyone interested in engaging in Indigenous research at Griffith University.

# Our past, present and future

Griffith University is committed to building the research capacity of Aboriginal and Torres Strait Islander peoples to contribute to the quality of the research fabric of the University, and deliver research of high standard and relevance (Griffith University Research Plan 2013-2017).

The Office of the Academic Director of Indigenous Education and Research and the Indigenous Research Unit advocates for Indigenous appropriate approaches to research, and promotes the interests of Aboriginal and Torres Strait Islander peoples, academics, HDR candidates and undergraduate research students.

**Relationships form an essential part of the foundation of the Indigenous Research Unit and provides us with strength and sustainability.**

Like the University, the Indigenous Research Unit *believes in a remarkable tomorrow, in doing our best and supporting others to do theirs*. In enacting this philosophy, the Indigenous Research Unit shares the University's values of:

- Rigorous standards of scholarship
- Positively influencing our communities through teaching, research and scholarly activities
- Engaging students as partners in their education
- Promoting the respect of individual rights and ethical standards
- Participatory decision making and problem solving
- Contributing to a robust, equitable and environmentally sustainable society
- Recognising and valuing diversity
- Recognising our First Peoples and enabling their continued contribution to the nation

How is the IRU working towards a *remarkable tomorrow* and enabling the contribution of our First Peoples? By:

- creating a research community that builds the research capacity of Aboriginal and Torres Strait Islander academic staff, HDR candidates and research-active undergraduate students;
- engaging in interdisciplinary and inter-institute research and activities, which promote Aboriginal and Torres Strait Islander intellectual authority;
- promoting quality research that benefits and demonstrates significance for Aboriginal and Torres Strait Islander people;
- providing support and mentoring to Aboriginal and Torres Strait Islander HDR candidates and research-active undergraduate students;
- supporting and facilitating research capacity development for Indigenous and non-Indigenous Australians;
- supporting higher education pathways for Indigenous students in a culturally aware learning environment; and
- contributing to the development of Indigenous knowledges and disseminating where appropriate.

# Our past, present and future (cont.)

## Financial support – small research grants and conference funding

In line with Griffith University's *Reconciliation Action Plan 2016-2018*, the Indigenous Research Unit strongly supports the University's action to raise the profile of Aboriginal and Torres Strait Islander research and enhance the range and quality of research projects. One of the mechanisms that the IRU utilises to extend the range and depth of member's research projects is through funding support.

The Indigenous Research Unit's Small Research Grants Scheme provides project seeding opportunities for members of the IRU network to increase their research profile and output. Small Grants up to \$10,000 may be requested to assist with the Direct and Indirect Costs associated with undertaking research including, but not limited to: (a) travel related to the research (eg airfares, airport transfers, accommodation and meals); (b) assistance with external grant preparation (eg: administrative / research assistance to prepare a proposal); (c) consumables used in undertaking the research; (d) library and information services; (e) equipment; (f) laboratory space; and (g) other running, maintenance and equipment costs required to undertake the project

To assist us with reviewing applications for funding, applications are assessed by experienced researchers (from within the wider University) and provide valuable feedback to assist researchers strengthen and develop their grant writing and overall research projects. All Small Research projects are of no more than 12 months duration and may be held concurrently with funding from alternate sources. The grants are for internal purposes only and cannot be transferred to other Universities or collaborating organisations.

Conference Support is also available to both IRU network members and HDR candidates to present their research findings at national and international research conferences. Financial support up to \$2,000 for international conference presentations and \$1,200 for national presentations may be requested to assist with: airfares, airport transfers, accommodation and meals, conference fees/registration/dinner, and other relevant related costs. Presenters are required to meet any additional funding required to attend, however the IRU's Research Conference Support may be held concurrently with funding from alternate sources.

Applicants are only eligible for Small Research Grants and/or Conference Support funding from the IRU once per calendar year.

## Our Resources

With views over the surrounding bushland, our large open plan office can accommodate visiting researchers in addition to the administrative team.

The boardroom space can be booked for meetings, and altered to create an intimate workshop environment. Our boardroom is supported by modern technology including a large internet-active project screen and teleconferencing facilities.

The Office's webpages ([griffith.edu.au/indigenousresearch](http://griffith.edu.au/indigenousresearch)) remain a valuable tool by providing an overview of both Indigenous-focussed research training and development opportunities available to HDR students and staff.

The Office's Facebook page is another important communication tool. It provides a practical link to connect with members of the University and wider community to share relevant information on a broad range of Indigenous research initiatives and activities. Importantly it also provides the Office with another platform to profile early career researchers and share their research activities.

# Our **Goals** for 2019

- Continue to develop and expand the Aboriginal and Torres Strait Islander HDR cohort program, including offering a 2019 HDR writing retreat.
- Foster pathways to Higher Degrees by Research for Postgraduate Coursework and Honours students, including continued involvement with the Kungullanji Undergraduate Research Program.
- Explore opportunities to collaborate with other areas of the University to foster and promote Indigenous Knowledges and research.
- Engage in opportunities to promote the Indigenous Research Unit in national settings, with a view to initiating new opportunities for research activities and HDR engagement.
- Raise the profile of Aboriginal and Torres Strait Islander research through an Indigenous-specific publication highlighting research activities and projects currently being undertaken by Aboriginal and Torres Strait Islander staff and students at Griffith University.
- Establish an “Indigenous Research” tag for media produced by the University.

# Indigenous Research Network members

| Title                    | Given Name     | Surname    | Department                         |
|--------------------------|----------------|------------|------------------------------------|
| <b>Full Members</b>      |                |            |                                    |
| Professor                | Boni           | Robertson  | ICEPP/IRU                          |
| Professor                | Roianne        | West       | Nursing & Midwifery                |
| Associate Professor      | Donna          | Leslie     | QCA                                |
| Dr                       | Kerry          | Bodle      | Business                           |
| Dr                       | Harry          | Van Issum  | Education and Professional Studies |
| Ms                       | Heron          | Loban      | Law                                |
| <b>Associate Members</b> |                |            |                                    |
| Mr                       | Shane          | Barnes     | GUMURRII                           |
| Ms                       | Jennifer-Leigh | Campbell   | GUMURRII                           |
| Mr                       | Stephen        | Corporal   | Health                             |
| Mr                       | John           | Graham     | GUMURRII                           |
| Ms                       | Candace        | Kruger     | Music                              |
| Ms                       | Krystal        | Lockwood   | Criminology                        |
| Ms                       | Kyly           | Mills      | Nursing & Midwifery                |
| Mr                       | Dale           | Rowland    | GUMURRII                           |
| Dr                       | Monica         | Seini      | SEET                               |
| Ms                       | Debbie         | Woodbridge | GUMURRII                           |
| Ms                       | Somer          | Wrigley    | Nursing & Midwifery                |



# Member Profiles

## Professor Boni Robertson



Professor Boni Robertson is a Kabi Kabi woman who is currently serving at Griffith University as a professor for Indigenous Policy. Her work in the areas of social policy, health, law and justice, and community development has earned her great respect in both Indigenous and non-Indigenous communities. She has been the recipient of various awards including the inaugural Bennelong Medal for outstanding leadership in Indigenous Affairs (2002); the Commonwealth Citizenship Medal (2004) and the NAIDOC Excellence Award in 2006. Boni has also authored a collection of reviews and reports relating to Aboriginal and Torres Strait Islander Affairs at the state, national and international level.

Having developed her expertise in Indigenous affairs., she has advised government, media, industry and the community at large, on relevant issues.

Boni sits on a number of state and national committees which include the Multicultural Council of Australia, the Murrii Court in the Queensland Magistracy, the World Indigenous Network Higher Education Consortium, and the National Network of Indigenous Women's Legal Services.

# Member Profiles

## Professor Roianne West

Born and raised Kalkadoon on her mother's country in North-West Queensland, Roianne has over 20 years of experience in Indigenous health. Her PhD explored factors that impact on successful completions in Higher Education by Indigenous Australians.

Professor West was Nursing Director for Indigenous Health, and her team won a statewide equity award for delivering outstanding health services and enriching diversity throughout the workplace for their work on an Indigenous Bachelor of Midwifery program. She has recently commenced a new role as Professor of First Peoples Health at Griffith University.

Professor West's expertise is in nursing and midwifery workforce development including recruitment, education and training of Indigenous nurses and midwives; and building the cultural capability of non-Indigenous nurses and midwives.

Professor West contributes to ANMAC, and represents CATSINaM on the Health Workforce Australia Aboriginal and Torres Strait Islander health curriculum framework project. She was the 2013 recipient of the Sally Goold Award for her commitment to increasing Indigenous nurses and midwives nationally.



# Member Profiles

## Associate Professor Donna Leslie



Associate Professor Donna Leslie is an art historian who specialises in Australian art. Donna undertook her doctorate in the discipline of Art History at the University of Melbourne. Her doctoral thesis explored Aboriginal art against the background of the policy of assimilation. Her book, *Aboriginal Art: Creativity and Assimilation*, was published by Macmillan in 2008. Donna has researched Australian art for many years. She greatly enjoys exploring creative art expression in Australia. Donna is a trained and experienced teacher, who has taught at all levels in universities, TAFE, secondary and primary schools throughout the course of her career. She is also a trained and experienced art museum curator who has worked in state museums and galleries in Australia.

Donna is also a painter who continues her art practice in her personal time. She has undertaken a broad range of artistic projects over the years, and in her early career she exhibited her art nationally. In 1993, Donna won the 'Crichton Award for Children's Book Illustration', from the Children's Book Council of Australia. She is fond of watercolours, inks, gouache and oils, but is also familiar with most art mediums.

# Member Profiles

## Dr Kerry Bodle

Dr Kerry Bodle is an Aboriginal woman whose mother was from Cherbourg and was part of the stolen generation. She obtained a Bachelor in Business (Accounting) in 1998, and then graduated with Honours in 2003. Kerry is the sole Indigenous Accounting Academic in Australia with full membership to the Institute of Public Accountants (IPA) and the Accounting and Finance Association of Australia and New Zealand (AFAANZ).

She completed her PhD in February 2013, titled "The effects of changes in accounting standards on financial ratios: consequences for bankruptcy prediction models". She has been employed at Griffith University since 1999 and is currently a lecturer in the Department of Accounting, Finance and Economics. She is an active member of the following committees: Aboriginal and Torres Strait Islander Advisory Committee, Griffith Aboriginal and Torres Strait Islander Employment Strategy, GBS HDR Aboriginal and Torres Strait Islander Post-graduate Student "Grown Your Own" Strategy committee and Aboriginal and Torres Strait Islander Curriculum Development and Implementation.

Kerry's current research involves:

- The development of a 'de-colonising' theoretical model and conceptual framework to inform new guidelines and standards to enable First Nation Peoples to realize the value of, and obtain commensurate financial and social benefit from, users of communally held Indigenous Cultural Heritage and IP assets" funded by ARC Indigenous Discovery grant (pending).
- The development of a conceptual model for relationship assessment in the context of Aboriginal and Torres Strait Islander franchisees and the franchisor, funded by a NRG.
- Building capacity and pathways to support Aboriginal and Torres Strait Islander peoples to develop employability skills in Financial Management positions - funded by and ARC/OLT grant.



# Member Profiles

## Dr Harry Van Issum



Harry Van Issum is a Woppaburra man from the Darambal Language Group in Central Queensland. Harry's first degree was a Diploma of Teaching at Griffith University and since then he has completed his Bachelor of Education and Master of Education and is currently completing his PhD. He has spent over 20 years teaching and researching in the area of Aboriginal and Torres Strait Islander education. He was winner of a National Indigenous Staff Scholarship in 2007 and has recently received the Griffith Excellence in Teaching Award 2015.

He is a lecturer in the School of Education and Professional Studies (EPS) and teaches Aboriginal history, culture and pedagogy. He is Chair of the First Australian Committee and member of Equity Committee and Griffith Institute of Educational Research attached to EPS. He is also a member of the University's Aboriginal and Torres Strait Islander Advisory Committee, Human Research Ethics Committee and the Aboriginal and Torres Strait Islander dedicated Memorial Committee Queensland. He also spent four years on the Queensland Indigenous Education Consultative Committee advising across a range of education issues. Research interests include pedagogical practices, pre-service teacher education and embedding Aboriginal and Torres Strait Islander content into school and tertiary environments.

Outside the University he is engaged in the World Indigenous Higher Education Network, Cooee Elders and the Murri Court in the Bayside region. Culturally he is involved in Woppaburra Land and Sea-country management and traditional use of marine resources.

# Member Profiles

## Ms Heron Loban

Born on Thursday Island, Ms Loban's family connections are to the Mabuiag and Boigu peoples. She is a Senior Lecturer in the Griffith Law School. Ms Loban's academic career has included academic positions held in the Oodgeroo Unit and Faculty of Law at Queensland University of Technology, and the School of Law at James Cook University. Ms Loban has a strong track record in publication in the areas of law and Indigenous studies and success in external grants and State and Commonwealth government consultancies. She was previously a solicitor working in the areas of criminal law, commercial law and native title. Ms Loban has also been the Chairperson of the Indigenous Consumer Assistance Network Ltd and Deputy Chairperson of the Centre for Appropriate Technology Ltd. She was appointed by the Minister for Communications from 2011-2013 as a member of the Regional Telecommunications Independent Review Committee and is currently a member of the Australian Broadcasting Corporation Advisory Committee and the Indigenous Advisory Committee of the Australian Communications Consumer Action Network Ltd.



# Research Highlights

The Unit's research highlights for 2018:

- Leda Barnett, Griffith University PhD candidate, was one of three highly respected researchers presenting their research findings at the Queensland Family and Child Commission's fourth Research in the Round forum on the theme of Reducing Youth Suicide (QUT, 22 February 2018). Leda's research candidature focuses on First Australian holistic health with a suicide prevention agenda. Leda was also involved in the forum's interactive panel discussion with Associate Professor James Scott (UQ), Dr Samantha Batchelor (yourtown), Mr Mark Davis (Roses in the Ocean), Ms Hayley Stevenson (Department of Education), and Ms Gwenn Murray (Gwenn Murray Consulting). The panel explored ways to reduce youth suicide and more effectively incorporate youth suicide prevention into policy and practice.
- PhD candidate Clinton Schultz received Griffith University's Outstanding First Peoples Alumnus Award.
- The Indigenous Research Unit, Griffith University and the Centre for Governance and Public Policy hosted a Special Seminar: Uluru Statement of the Heart. Thomas Mayor shared his experiences concerning the consensus at Uluru, his travels throughout the nation with the Uluru Statement Canvas, and what all Australians can do to achieve the Statement's ultimate vision: A Constitutionally Enshrined First Nations Voice and Makarrata. The highly successful evening was presided over by Bart Stanford (PhD candidate, Centre for Governance and Public Policy) and included an Acknowledgement to Country by Aunty Anne Leisha (Griffith Council of Elders), and reflections by Uncle Bill Buchanan (Reconciliation Queensland) and Heron Loban (Griffith Law School). 13 November 2018.
- The Kungullangi Undergraduate Research Program received a Dean's Highly Commended Certificate in the 2018 Griffith Sciences Group Learning and Teaching Citations.
- The IRU held its first HDR Writing and Publishing Retreat.
- The IRU was invited to attend the Community of Practice (CoP), facilitated by Dr Abi Downey (Education Officer, GGRS). The CoP was initiated to bring together the diverse range of Griffith staff members who are involved in HDR training and development in order to increase interdepartmental communication, enable the identification of areas for potential collaborations and generate collective learning through shared experiences
- The IRU and the Centre for Governance and Public Policy jointly appointed Mr Wayne Bergman as an Adjunct Industry Fellow for two years. Wayne formerly spent a decade as head of the Kimberley Land Council, one of the largest organisations dealing with Aboriginal land rights and resources issues in Australia. As CEO of KRED Enterprises, an initiative of the Kimberley Land Council, he is now pursuing his passion to drive social change in Kimberley communities, in particular by helping Aboriginal people get control of their future through providing increased business opportunities and economic independence.
- The IRU launched its webpage profiling the HDR candidates.
- The IRU held a number of catch ups over multiple campuses, allowing the HDR cohort to come together to develop their research profiles.
- HDR candidate, Gina Masterton was appointed President of National Aboriginal and Torres Strait Islander Post-Grad Association (NATSIPA)

# Collaborations

The IRU and its members collaborated with the following partners during 2018:

- Researcher Education and Development (RED), Office for Researcher to offer the “Indigenous Knowledges and Research Seminar Series”
- Centre for Governance and Public Policy
- North Keppel Island Environmental Education Centre
- Salisbury State School
- School of Human Services and Social Work
- WINHEC / WIRA





# Indigenous Higher Degree by Research (HDR) Candidates

Griffith University's Aboriginal and Torres Strait Islander HDR enrolments continue to increase. In 2018, 37 candidates were enrolled in HDR programs and 4 candidates completed during the year. The HDR awards and theses conferred were:

- Doctor of Philosophy - "Biting the Clouds: The Aboriginals Protection and Restriction of the Sale of Opium Act, 1897";
- Doctor of Visual Arts - "Exploring Aboriginal Identity through Self-Portraiture";
- Master of Education and Professional Studies Research - "The unexamined system: Indigenous students' secondary school attendance"; and
- Master of Arts Research - "Voice in Australian creative non-fiction: The project of my belonging".

In terms of Griffith University being a HDR pathway of choice and "Growing Our Own", it was uplifting to see the Masters of Arts Research candidate continue on to a PhD at Griffith.

The IRU continues its strong collaboration in the HDR space with the Griffith Graduate Research School and GUMURRII Student Support Unit. We co-hosted our first off-campus HDR Writing and Publishing Retreat for candidates, which was attended by 11 HDR candidates across three days. The candidates attended workshops, focussed on writing and discussed their research with an academic advisor and an Elder. Networking and cohort building underpinned the highly successful Retreat.

In addition to the Retreat, the IRU continued to support the social and emotional well-being of HDR candidates through regular gatherings across campuses. The gatherings were both academic and cultural in nature and attended by different groups depending on the focus, ie just candidates, candidates / Elders, or candidates / Indigenous and non-Indigenous researchers.

HDR candidates once again contributed to the Kungullanji Undergraduate Research Program. As part of the final Conference, candidates participated in panel and information sessions—overviewing their research projects, outlining pathways to research and participating in Q&A panels for the undergraduate students. Importantly, the candidates also supported the students' presentations as audience members. Through this participation, our HDR candidates undertake an essential mentoring and leadership role for the undergraduate students.

We were pleased to see our HDR cohort participating in both national and international research opportunities, and provide assistance for these Conference and Research activities when needed. Of note, is the role our IRU members provide in mentoring HDR candidates through participation in the IRU's Small Research Grants. In addition to the obvious practical research experience, the Grants assist HDR candidates to build their emerging research profiles through conference presentations and publications.

Our HDR cohort program and support develops each year. We are excited to see what 2019 will bring.

# Kungullanji Undergraduate Research Program

Kungullanji is an Aboriginal word from the Yugambah language meaning "to think". The Kungullanji Undergraduate Research Program provides a practical opportunity for undergraduate students to experience an academic research environment and challenges them to apply the knowledge gained through their coursework studies to a research problem.

The Program aims to improve the retention and participation of Aboriginal and Torres Strait Islander students by enhancing their academic experience and confidence through the development of research skills in a practical placement setting.

The Program's overarching goal is to develop work-ready graduates and, importantly, create a pipeline for undergraduate students to HDR research. This will, in time, create a cohort of Early Career Researchers and ultimately academic staff.

The Program is coordinated by Ms Jennifer-Leigh Campbell and this was the fourth year that the Program was offered to students. Twenty-one students participated in the 2017/2018 Program, 9 of which were returning scholars. The majority of the students were based on the Gold Coast campus with Health being the highest represented academic group. The students undertook projects across a range of Schools and Research Centres within the University under the supervision of academic staff. The students' research covered the following topics:

- Improving cultural safety in physiotherapist graduates through a discrete First Peoples cultural capability course
- Evaluation of an Aboriginal and Torres Strait Islander resilience scale
- Indigenous youth suicide prevention: Gatekeeper training programs
- Giving healthy lifestyle advice to obese individuals: perspective of the individual and the general practitioner
- Anti-bullying program or "Rainbow Trojan Horse"? Media representations of safe schools during Australia's marriage equality plebiscite
- How does the lack of a birth certificate or birth registration link to increased incarceration rates of Aboriginal and Torres Strait islanders?
- Sparking a national conversation: the Aboriginal elite and the issues with Indigenous representation in the movement for constitutional recognition of Aboriginal and Torres Strait Islander people
- The impact of belief systems on ancient Egyptian and Australian Aboriginal cultures: similarities and differences
- Use of mobile applications in Indigenous businesses
- Australian Legislative and Policy Frameworks for the Protection and Utilisation of Indigenous Cultural Heritage and Intellectual Property
- Mobile phones, the downfall of our environment

# Kungullanji Undergraduate Research Program (cont.)

The students' topics (cont.):

- Can Gumby Gumby (*pittosporum angustifolium*) do wonders?
- The Canine Buddy Project: working with children who are 'at risk'
- Australian Police Officers & the Media
- Making Aboriginal and Torres Strait Islander health knowledge "everybody's business"
- Standardising the quality of care by health care professionals to recognise, respond and treat domestic violence
- What Predicts Cultural Capability in Psychology Students?
- Yarning circles as a research method

The participants of the 2017/2018 Program offered the following feedback on completion of the Program:

More than 85% of the summer scholars found the orientation and workshops useful and informative. Many of this year's scholars were returning scholars and have attended similar workshops in previous years, so this score might be improved if different workshops are offered to returning scholars.

Many students reported that they are more likely to apply for Honours after completing the Program, with 87.5% of survey respondents saying it was very likely that they would in the future.

100% of the survey respondents either agreed or strongly agreed that the yarning circles and Conference experience helped them feel more supported and confident.

Student quotes:

- Thank you to for making this Program possible for Indigenous students to improve themselves in so many ways. Each year I have grown as a person and improved as a student and for that I am so grateful.
- I felt extremely supported by my supervisor and I do attribute that to having a large network of support.
- I think one of the strengths about the Program, was that it was structured in a way that the scholars could access support whenever required. All workshops, yarning circles and drop-in sessions were extremely valuable to my experience in this Program.
- The Program was structured really well, which was a great foundation for the Program. Additionally, I found that I was always supported at the workshops and could openly discuss ideas without judgement.
- My success and confidence as a student has definitely grown as a result of attending this Program. Thanks to the support of the Program I feel far more prepared for my future as a researcher.

# Research grants

The IRU has once again been highly active throughout 2018 increasing our research profile both nationally and internationally. The following information provides an overview of specific research projects and the funding received.

The IRU awarded \$26,600 in Small Research Grants and Conference Presentation Support during 2018:

## *Conference Support*

- Debbie Bargallie. 'Reimagining Life as an Australian Indigenous Offender in Custody', Joint Annual Meeting on Law and Society, Toronto, Canada, 7-10 June 2018, \$2,000.
- Donna Locke. 'Evaluation of an Aboriginal and Torres Strait Islander resilience scale', Australasian Conference for Undergraduate Research, La Trobe University, Melbourne, 24-25 September 2018, \$1,100.
- Eden Little. 'Can Gumby Gumby (pittosporum angustifolium) do wonders?', Australasian Conference for Undergraduate Research, La Trobe University, Melbourne, 24-25 September 2018, \$1,100.
- Gina Masterton. 'Child Abduction or Flight to Safety. The Experience of Women Domestic Violence Victims', NATSIPA Conference, Australian National University, Canberra, 24-25 September 2018, \$1,200.
- Eddie Synot. 'Consorting with Half-Castes: Sovereignty's Dwelling in Fractured Legality', Law & History Conference 2018: Exclusion, Confinement, Dispossession: Uneven Citizenship and Spaces of Sovereignty, University of Wollongong, 10-12 December 2018, \$1,200.

## *Members' Projects*

**Bodle K**, Frazer L, Weaven S and Brimble M. 'Empowering Indigenous businesses through improved financial literacy', ARC Indigenous Discovery, \$320,286.

Akimov A, Simshauser P, Kler P, Wagner L, **Bodle K** and Winata L. 'Solar for Public Housing in remote Qld communities', Griffith Business School grant, \$15,026.50.

Becken S, Bianchi R, Butler D, Chai A, Deshpande S, Roca E, Rundle-Thiele S, Weaven S, Wilkinson A and **Bodle K**. 'A roadmap for establishing a Behavioural Science Group in the GBS ', Griffith Business School grant, \$45,000.

Jackson B, Hannant A, **Bodle K**, Carmignani F, Guzman G, Sarker T and Shah D. Social Innovation and Entrepreneurship Cluster, Griffith Business School grant, \$70,000.

**Van Issum H**, Meston T and **Robertson B**. 'Pedagogical use of yarning circles', Griffith Grant for Learning & Teaching, \$5,000.

Meston T, **Van Issum H** and Klieve H. 'Deadly Gaming', Education Qld Horizon Grant, \$88,600.

# Publications (by members)

1. Hutchings K, Bainbridge R, **Bodle K** and Miller A. *Determinants of Attraction, Retention and Completion for Aboriginal and Torres Strait Islander Higher Degree Research Students: A Systematic Review to Inform Future Research Directions*. Research in Higher Education, 1–28.
2. Hutchings K, Bainbridge R, Miller A and **Bodle K**. *Opportunities and resilience: Enablers to address barriers for Aboriginal and Torres Strait Islander Peoples to commence and complete HDR programmes*. Australian Aboriginal Studies (2), 29-49.
3. **Bodle K**, Brimble M, Blue L, Weaven S and Frazer L. *Critical success factors in managing sustainable Indigenous businesses*. Pacific Accounting Review, 30(1). pp: 35 -51.
4. Xiong F, Nelson J and **Bodle K**. *The adoption of new technology by listed companies: the case of Twitter*. Technology Analysis & Strategic Management, 30:7, 852-865.
5. **Van Issum H**. *Why we need Aboriginal & Torres Strait Islander Perspectives*. Place and Time; teaching History, Geography and Social Sciences, 2nd Edition. Pearson: Melbourne.
6. **Loban H**, van Doore K and Rathus Z. *Parentage not parenthood: Ending discriminatory laws and policies regarding the legal recognition of Torres Strait Islander traditional adoption*. 31 Australian Journal of Family Law 1.
7. **Mills K**, Creedy DK and **West R**. *Experiences and outcomes of health professional students undertaking education on Indigenous health: A systematic integrative literature review*. Nurse Education Today, 69, 149-158.
8. Hickey S, Roe R, Gao Y, Nelson C, Carson A, Currie J, Reynolds MI, Wilson K, Kruske S, Blackman R, Passey M, Clifford A, Tracy S, **West R**, Williamson D, Kosiak M, Watego S, Wester J and Kildea S. *The Indigenous Birthing in an Urban Setting study: the IBUS study*. BMC Pregnancy and Childbirth, 18: 431.
9. Zimmerman P, Stringfellow T, **Rowland D**, Armstrong V and **West R**. *Review of Aboriginal and Torres Strait Islander content within a Bachelor of Nursing*. Collegian, 26:4, 441-447.
10. **West R**, **Mills K**, **Rowland D** and Creedy DK. *Validation of the first peoples cultural capability measurement tool with undergraduate health students: A descriptive cohort study*. Nurse Education Today, 64, 166-171.
11. Johnston J, Forde S and **Robertson B**. *In whose interests? Media, political communication and First Nations Australians*. Public Interest Communication: Critical Debates and Global Contexts, edited by Magda Pieczka and Jane Johnston, Routledge: United Kingdom.
12. **Leslie D**. *Loved and Despised: Imaging the Golliwog Doll in the Australian Context*. Journal of Australian Indigenous Issues, 21(1-2):61-80.
13. **Leslie D**. Robert Havell junior (engraver); *Lieutenant Robert Dale (after), Panoramic view of King George's Sound, part of the colony of Swan River, 1834*. Colony. Australia 1770-1861: Frontier Wars, (Melbourne: National Gallery of Victoria, 2018), 64-65.

# Publications with a First Peoples focus undertaken by members of the wider Griffith University community

In accordance with the Reconciliation Action Plan 2016-2018's target to profile research projects and activities related to Aboriginal and Torres Strait Islander peoples being undertaken at Griffith University, the following publications were produced within the wider University community throughout 2018:

| Internal Authors   | External Authors   | Publication Title  | Publication                    | Publisher                         |
|--|--|--|--------------------------------|-----------------------------------|
| 01 Prof Regina Ganter                                    | -  | The Contest for Aboriginal Souls: European missionary agendas in Australia   | A1 - Authored Research (HERDC) | ANU Press                         |
| 01 Prof Sue Jackson                                      | 02 Prof Libby Porter; 03 Louise  | Planning in Indigenous Australia: From Imperial Foundations to Postcolonial Futures  | A1 - Authored Research (HERDC) | Routledge                         |
| 01 Prof Ciaran O'Faircheallaigh                          | -  | Mining, development and indigenous peoples   | B1 - Book Chapters (HERDC)     | Routledge                         |
| 01 Dr Jillian Huntley                                    | -  | Aliens, Hieroglyphs and Australian Rock Art: Homage and Conspiracy Theory as Colonial Instruments – Why Recognising Aboriginal         | B1 - Book Chapters (HERDC)     | Cambridge Scholars Publishing     |
| 04 EmProf Darryl Low Choy                                | 01 Mr Grant Revell; 02 Dr Scott Heyes; 03 Prof David Jones; 05 Dr Richard Tucker; 06 | Enough Is Enough: Indigenous Knowledge Systems, Living Heritage and the (Re)Shaping of Built Environment Design Education in Australia | B1 - Book Chapters (HERDC)     | Springer Nature Singapore Pte Ltd |
| 01 Prof Brydie-Leigh Bartleet; 02 APro Naomi Sunderland; | -  | How can arts participation promote Indigenous social determinants of health?   | B1 - Book Chapters (HERDC)     | Palgrave Macmillan                |
| 01 Dr Shelley Bielefeld                                  | -  | Indigenous peoples, neoliberalism and the state: A retreat from rights to 'responsibilisation' via the cashless welfare                | B1 - Book Chapters (HERDC)     | ANU Press                         |
| 01 Dr Edwin Bikundo                                      | -  | Aligning means and ends to benefit indigenous peoples under the Convention on  | B1 - Book Chapters (HERDC)     | Routledge                         |
| 01 Prof Beryl Exley                                      | -  | Valuing students' diverse language and cultural backgrounds: A multiliteracies   | B1 - Book Chapters (HERDC)     | Oxford University Press           |
| 02 Prof Brydie-Leigh Bartleet                            | 01 APro Anne Power; 03 Prof Dawn Bennett   | Transforming Lives: Exploring Eight Ways of Learning in Arts-based Service Learning with Australian Aboriginal Communities             | B1 - Book Chapters (HERDC)     | University of Hawaii Press        |
| 01 Dr Elizabeth Burrows                                  | -  | Indigenous media producers' perspectives on objectivity, balancing community   | C1 - Peer Reviewed (HERDC)     | Sage                              |

# Publications with a First Peoples focus undertaken by members of the wider Griffith University community (cont.)

| Internal Authors  | External Authors  | Publication Title  | Publication                | Publisher                      |
|---|---|--|----------------------------|--------------------------------|
| 01 APro Heidi Smith-Vaughan; 11 Prof Keith Grimwood                 | 02 Dr Michael Binks; 03 Ms Jemima Beissbarth; 04 Adj Prof Anne B. Chang; 05 Dr Gabrielle B. McCallum; 06 APro Ian M. Mackay; 07 Prof Peter S. Morris; 08 Dr Robyn Marsh; 09 Prof Paul J. Torzillo; 10 Dr Danielle F. Wurzel; 12 Adj Prof Elizabeth Nosworthy; 13 Ms Jane E. Gaydon; 14 Prof Amanda J. Leach; 15 Ms Barbara MacHunter; 16 APro Mark D. Chatfield; 17 Prof Theo P. Sloots; 18 Prof Allen C. Cheng | Bacteria and viruses in the nasopharynx immediately prior to onset of acute lower respiratory infections in Indigenous Australian children | C1 - Peer Reviewed (HERDC) | Springer Verlag                |
| 01 Prof Charles Lawson; 02 Dr Edwin Bikundo; 03 APro Kieran Tranter | -   | The Perils of Parliamentarism: The World Intellectual Property Organization and Indigenous Peoples   | C1 - Peer Reviewed (HERDC) | Oxford University Press        |
| 02 Prof Sue Jackson;  | 01 Ms Kate Berry; 03 Ms Laurel Saito; 04 APro Louis Forline;  | Reconceptualising water quality governance to incorporate knowledge and values: Case studies from Australian and Brazilian                 | C1 - Peer Reviewed (HERDC) | Water Alternatives Association |
| 01 Prof Sue Jackson;  | -   | Building trust and establishing legitimacy across scientific, water management and   | C1 - Peer Reviewed (HERDC) | Taylor & Francis               |
| 07 Prof Noel Hayman   | 01 Dr KS Kylie Lee; 02 Mr Scott Wilson; 03 Mr Jimmy Perry; 04 Mr Jimmy Robin; 05 Dr Sarah Callinan; 06 Mr Robert Assan; 08 Prof Tanya Chikritzhs; 09 Prof Dennis Gray; 10 APro Edward Wilkes; 11 Mr Peter Jack; 12 Prof Katherine M. Conigrave  | Developing a tablet computer-based application ('App') to measure self-reported alcohol consumption in Indigenous Australians              | C1 - Peer Reviewed (HERDC) | BIO Med Central                |

# Publications with a First Peoples focus undertaken by members of the wider Griffith University community (cont.)

| Internal Authors  | External Authors   | Publication Title  | Publication Category                 | Publisher   |
|---|--|--|--------------------------------------|---|
| 01 Dr Tasha Riley   | -  | Exceeding Expectations: Teachers' Decision Making Regarding Aboriginal and Torres Strait Islander Students   | C1 - Peer Reviewed (HERDC)           | Corwin Press  |
| 03 Mr Ali Lakhani   | 01 Dr Paul White; 02 Dr Clare Townsend; 04 APro Jennifer Cullen; 05 Mr Jason Bishara; 06 Mr Alan White   | The Prevalence of Cognitive Impairment among People Attending a Homeless Service in Far North Queensland with a Majority Aboriginal and/or Torres Strait Islander People | C1 - Peer Reviewed (HERDC)           | John Wiley & Sons                                   |
| 01 Miss Joanne Wright; 02 Dr Sally Wasef; 03 Dr Tim Heupink; 04 Dr Michael Westaway; 20 Prof Paul Tacon; 24 Dr Sankar Sankarasubramanian; 28 Prof David Lambert | 05 Simon Rasmussen; 06 Dr Colin Pardoe; 07 Mr Gudju Gudju Fourmile; 08 Mr Michael Young; 09 Aunty Trish Johnson; 10 Aunty Joan Slade; 11 Uncle Roy Kennedy; 12 Aunty Patsy Winch; 13 Aunty Mary Pappin Sr.; 14 Aunty Tapij Wales; 15 Uncle William Badger Bates; 16 Ms Sharnie Hamilton; 17 Uncle Neville Whyman; 18 Dr Sheila van Holst Pellekaan; 19 Dr Peter J. McAllister; 21 APro Darren Curnoe; 22 Dr Ruiqiang Li; 23 APro Craig Millar; 25 Prof Eske Willerslev; 26 Prof Anna-Sapfo Malaspinas; 27 Dr Martin Sikora | Ancient genomic population structure enables the repatriation of Aboriginal Australians  | C1 - Peer Reviewed (HERDC)           | American Association for the Advancement of Science |
| 01 Mr Greg Kitson; 03 EmPr Darryl Low Choy; 05 Dr Silvia Serrao-Neumann; 06 Ms Gemma Schuch   | 02 Mr Mandy Nicholson; 04 Prof David Jones   | Being 'in-there' not 'out-there': Urban planning and Aboriginal peoples  | E1 - Conference Publications (HERDC) | Australian Cities Research Network (ACRN)           |



# Publications with a First Peoples focus undertaken by members of the wider Griffith University community (cont.)

| Internal Authors   | External Authors   | Publication Title  | Publication Category       | Publisher                                   |
|--|--|--|----------------------------|---|
| 01 Prof Janet Ransley; 02 Prof Elena Marchetti   | -  | Medicalizing the Detention of Aboriginal People in the Northern Territory: A New/Old Regime of Control?  | C1 - Peer Reviewed (HERDC) | Sage  |
| 01 Ms Clare Townsend; 02 Dr Michelle McIntyre; 03 Mr Ali Lakhani; 04 Dr Courtney Wright; 06 Mr Jason Bishara | 05 Paul White; 07 Jennifer Cullen  | Inclusion of marginalised Aboriginal and Torres Strait Islander Peoples with neurocognitive disability in the National Disability Insurance Scheme (NDIS)    | C1 - Peer Reviewed (HERDC) | Critical Institute                          |
| 01 Prof Amanda Wheeler; 02 Dr Jean Spinks; 03 Dr Fiona Kelly; 04 Prof Robert Ware; 07 Prof Paul Scuffham     | 05 Ms Erica Vowles; 06 Mr Mike Stephens; 08 Prof Adrian Miller   | Protocol for a feasibility study of an Indigenous Medication Review Service (IMeRSe) in Australia  | C1 - Peer Reviewed (HERDC) | BMJ Publishing Group                        |
| 01 Prof Ciaran O'Faircheallaigh  | -  | Using revenues from Indigenous impact and benefit agreements: building theoretical insights  | C1 - Peer Reviewed (HERDC) | Taylor & Francis                            |
| 03 Prof Sue Jackson  | 01 Dr Vanessa M. Adams; 02 Mr Michael M. Douglas; 04 Ms Kelly Scheepers; 05 Mr Johnathan T. Kool; 06 Samantha A. Setterfield | Conserving biodiversity and Indigenous bush tucker: Practical application of the strategic foresight framework to invasive alien species management planning | C1 - Peer Reviewed (HERDC) | Wiley-Blackwell Publishing                  |
| 01 Prof Beryl Exley; 02 Dr Susan Whatman; 03 Prof Parlo Singh  | -  | Postcolonial, decolonial research dilemmas: fieldwork in Australian Indigenous contexts  | C1 - Peer Reviewed (HERDC) | Sage Publications                           |
| 02 Prof Ciaran O'Faircheallaigh  | 01 Dr Levon Blue   | Indigenous autonomy and financial decision-making in communities   | C1 - Peer Reviewed (HERDC) | Financial Planning Association of Australia |
| 01 Dr Robyn Holder   | 02 Dr Judy Putt  | Research collaborations between women's specialist services, Aboriginal women and researchers  | C1 - Peer Reviewed (HERDC) | Sage Publications                           |
| 03 Prof Joseph Reser; 04 Dr Samid Suliman  | 01 Dr Daphne Nash; 02 Prof Paul Memmott  | We're the same as the Inuit!: Exploring Australian Aboriginal perceptions of climate change in a multidisciplinary mixed methods study                       | C1 - Peer Reviewed (HERDC) | Elsevier                                    |

# Publications with a First Peoples focus undertaken by members of the wider Griffith University community (cont.)

| Internal Authors   | External Authors  | Publication Title  | Publication Category       | Publisher                           |
|--|---|--|----------------------------|-------------------------------------|
| 01 Dr Alison Sammel; 02 Dr Susan Whatman   | -   | A novel approach to developing literacies in Indigenous Knowledge Systems and Western Science Knowledge: lessons from Primary school students in Australia   | C1 - Peer Reviewed (HERDC) | Monash University                   |
| 01 Dr Shelley Bielefeld  | -   | Government mythology on income management, alcohol, addiction and Indigenous communities   | C1 - Peer Reviewed (HERDC) | Sage Publications                   |
| 01 Dr Simon Little; 02 Prof Anna Stewart; 03 Mrs Nicole Ryan                                     | -   | Restorative Justice Conferencing: Not a Panacea for the Overrepresentation of Australia's Indigenous Youth in the Criminal Justice System                    | C1 - Peer Reviewed (HERDC) | Sage                                |
| 01 Mr Brendan Anthony; 02 APro Donna Weston; 03 Mr Sam Vallen                                    | -   | Thumbs Up: The effective use of music in health and well-being education for Australian Aboriginal youth in remote communities                               | C1 - Peer Reviewed (HERDC) | Intellect                           |
| 01 Mr Shaun Adams; 05 Dr Michael Westaway  | 02 Dr Richard Martin; 03 Ms Susan Phillips; 04 Dr Colin Macgregor | Truth-Telling in the Wake of European Contact: Historical Investigation of Aboriginal Skeletal Remains from Normanton  | C1 - Peer Reviewed (HERDC) | Springer US                         |
| 01 Dr Johanna Nalau; 02 Prof Susanne Becken; 03 Miss Johanna Schliephack; 06 Prof Brendan Mackey | 04 Dr Meg Parsons; 05 Ms Cilla Brown                              | The role of indigenous and traditional knowledge in ecosystem-based adaptation: a review of the literature and case studies from the Pacific Islands         | C1 - Peer Reviewed (HERDC) | American Meteorological Society     |
| 01 Dr Tasha Riley; 02 APro Michelle Pidgeon  | -   | Australian teachers voice their perceptions of the influences of stereotypes, mindsets and school structure on teachers' expectations of Indigenous students | C1 - Peer Reviewed (HERDC) | Taylor & Francis                    |
| 01 Dr Stuart Cooke   | -   | Indigenous Poetics and Transcultural Ecologies   | C1 - Peer Reviewed (HERDC) | Pennsylvania State University Press |

# Publications with a First Peoples focus undertaken by members of the wider Griffith University community (cont.)

| Internal Authors   | External Authors  | Publication Title   | Publication Category       | Publisher            |
|--|---|---|----------------------------|----------------------|
| 13 EmPr Newell Johnson   | 01 Dr Lisa Jamieson; 02 Prof Gail Garvey; 03 Ms Joanne Hedges; 04 Ms Amanda Mitchell; 05 Prof Terry Dunbar; 06 Ms Cathy Leane; 07 Mr Isaac Hill; 08 Dr Kate Warren; 09 Prof Alex Brown; 10 Dr Xiangqun Ju; 11 Prof David Roder; 12 Prof Richard Logan; 14 Dr Megan Smith; 15 Dr Annika Antonsson; 16 Prof Karen Canfell | Human papillomavirus and oropharyngeal cancer among indigenous Australians: Protocol for a prevalence study of oral-related human papillomavirus and cost-effectiveness of prevention | C1 - Peer Reviewed (HERDC) | J M I R Publications |
| 01 Dr Cara Beal; 02 Miss Melissa Jackson; 03 Prof Rodney Stewart | 04 Mr Cail Rayment; 05 Prof Adrian Miller   | Identifying and understanding the drivers of high water consumption in remote Australian Aboriginal and Torres Strait Island communities  | C1 - Peer Reviewed (HERDC) | Elsevier             |

# Research grants with a First Peoples focus awarded to members of the wider Griffith University community

In accordance with the Reconciliation Action Plan 2016-2018's target to profile research projects and activities related to Aboriginal and Torres Strait Islander peoples being undertaken at Griffith University, the following research grants were awarded within the wider University community throughout 2018:

| Grant ID | Project Title   | First Named Investigator   | All Investigators   | Funds Provider   | Scheme Name  | Grant Start Date |
|----------|---|----------------------------|---|--|--|------------------|
| 48949    | HPV and oropharyngeal cancer in Indigenous Australians  | EmPr Newell Johnson        | APro Lisa Jamieson, Prof Karen Canfell, APro Gail Garvey, APro Terry Dunbar, Ms Joanne Hedges, Dr Annika Antonsson, Ms Amanda Mitchell, Ms Megan Smith; EmProf Newell Johnson, Prof Richard Logan | The University of Adelaide NHMRC                             | NHMRC - Project Grants   | 1/01/2017        |
| 48650    | Mapping song-lines in Aboriginal Family Wellbeing service delivery: Assessing the impact of Family Wellbeing Service Delivery in Indigenous communities | Dr Vicki Saunders          | Dr Vicki Saunders   | Griffith University  | Griffith University Postdoctoral and Research Fellowship Scheme          | 16/01/2017       |
| 49341    | Members to Leaders? Aboriginal and Torres Strait Islander Participation in Political Parties  | Prof Duncan McDonnell      | AProf Michelle Evans; Prof Duncan McDonnell   | Charles Sturt University ARC                                 | ARC Discovery Indigenous grant   | 7/06/2017        |
| 48620    | Costing Indigenous and non-Indigenous offending trajectories: Establishing better estimates to assist the evidence base and prevent offending           | Dr Troy Allard             | Dr Troy Allard; Prof Anna Stewart; Ms April Chrzanowski; Ms Molly McCarthy  | Australian Institute of Criminology                          | Criminology Research Grants  | 14/07/2017       |
| 49910    | An Indigenous journey through the 21st century educational landscape of new metrics (Troy Meston)   | APro Kerrie Foxwell-Norton | APro Kerrie Foxwell-Norton  | Department of Science, Information Technology and Innovation | Advance Queensland Aboriginal and Torres Strait Islander PhD Scholarship | 1/08/2017        |

# Research grants with a First Peoples focus awarded to members of the wider Griffith University community (cont.)

| Grant ID | Project Title   | First Named Investigator | All Investigators   | Funds Provider   | Scheme Name   | Grant Start Date |
|----------|---|--------------------------|---|--|---|------------------|
| 50195    | Indigenous Incarceration and the Arts: Global perspectives  | Dr Sarah Woodland        | Dr Sarah Woodland, Brenda Morrison; Dr Vicki Saunders   | Griffith University  | Griffith University - Simon Fraser University Collaborative Travel Grant            | 18/12/2017       |
| 49949    | Listening to Country: Exploring the value of acoustic ecology with Aboriginal and Torres Strait Islander women in prison                    | Dr Sarah Woodland        | Dr Sarah Woodland; Dr Vicki Saunders; Dr Leah Barclay; Dr Bianca Beetson  | The Lowitja Institute Aboriginal and Torres Strait Islander Health CRC (Lowitja Institute CRC) | The Lowitja Institute Aboriginal and Torres Strait Islander Hlth CRC Research Grant | 1/01/2018        |
| 49162    | Empowering Indigenous businesses through improved financial literacy  | Dr Kerry Bodle           | Dr Kerry Bodle; Prof Lorelle Frazer; Prof Scott Weaven; Prof Mark Brimble   | Australian Research Council (ARC)  | ARC Discovery Indigenous grant  | 1/01/2018        |
| 50542    | Indigenous and Regional Engagement  | Prof Michele Burford     | Prof Michele Burford  | Australian Government - Department of Environment and Energy                                   | NESP - Northern Australia Environmental Resource Hub                                | 1/01/2018        |
| 51475    | Women's action for Mums and Bubs (WOMB): A pragmatic trial of participatory women's groups to improve Indigenous maternal and child health. | APro Emily Callander     | Prof Sarah Larkins, Dr Judy Taylor, Prof Yvonne Cadet-James, Prof Ross Bailie, Prof Jane Farmer, APro Megan Passey, APro Catrina Felton-Busch, Dr Veronica Matthews; APro Emily Callander, Dr Rebecca Evans | James Cook University NHMRC  | NHMRC - Project Grants  | 1/01/2018        |

# Research grants with a First Peoples focus awarded to members of the wider Griffith University community (cont.)

| Grant ID | Project Title  | First Named Investigator    | All Investigators  | Funds Provider                                       | Scheme Name  | Grant Start Date |
|----------|--|-----------------------------|--|--|--|------------------|
| 50653    | Regulation and Governance for Indigenous Welfare: Poverty Surveillance and its Alternatives  | Dr Shelley Bielefeld        | Dr Shelley Bielefeld   | Australian Research Council (ARC)                    | Discovery Early Career Research Award (DECRA)                            | 8/05/2018        |
| 51421    | Collaboration and Communication in Cancer Care for Aboriginal and Torres Strait Islander People: The 4Cs Project improving patient-centred care and treatment outcomes | APro Emily Callander        | Prof Gail Garvey, AProf Haryana Dhillon, Prof Joan Cunningham, APro Michael Penniment, Prof Sabe Sabesan, APro Georgia Halkett, APro Emily Callander | Menzies School of Health Research NHMRC              | NHMRC Partnership Project Grant  | 1/07/2018        |
| 50884    | Preventing early-onset pneumonia in Indigenous infants through maternal immunisation: a multi-centre randomised controlled trial                                       | Prof Keith Grimwood         | Prof Keith Grimwood  | National Health and Medical Research Council (NHMRC) | NHMRC - Project Grants   | 1/08/2018        |
| 50238    | How do Indigenous Liaison Officers support speech pathology services for Indigenous Australian adults with acquired neurogenic communication disorders?                | Dr Samantha Siyambalapatiya | Dr Samantha Siyambalapatiya, Ms Frances Cochrane; APro Petrea Cornwell   | Speech Pathology Australia                           | Speech Pathology Australia Grant   | 28/08/2018       |
| 51395    | Indigenous Incarceration and the Arts  | Dr Sarah Woodland           | APro Brenda Morrison; Dr Sarah Woodland; Dr Vicki Saunders   | Griffith University                                  | Griffith University - Simon Fraser University Collaborative Travel Grant | 17/12/2018       |

# Invited Memberships on Advisory Boards

Kerry Bodle:

- Griffith Academy of Learning and Teaching Scholars (GALTS)
- GBS Diversity and Inclusion Working Group
- Reconciliation Champion – Reconciliation Action Plan Working Party member
- GBS PVC Nominated Equity Champion
- Co-chair, Indigenous Accountants Australia
- Griffith University - Indigenous Employment Strategy Committee
- Indigenous Research Unit (IRU), Research Centre
- CPA Australia (Member # 10145045)
- Indigenous Accountants Australia Initiative Advisory Committee
- National Institute of Public Accountants (IPA)
- Accounting & Finance Association of Australia & New Zealand (AFAANZ)
- Aboriginal & Torres Strait Islander Advisory Committee, ex officio member

Harry Van Issum:

- Woppaburra Traditional Use of Marine Resources Committee, Great Barrier Reef Marine Park Authority

Heron Loban:

- Advisory Group, Supreme Court Library Queensland
- Reconciliation and First Nations Advancement Committee – Queensland Law Society
- Ministerial Appointment - Appointed Company Director, Desert Knowledge Australia
- Domestic and Family Violence Council Aboriginal and Torres Strait Islander Advisory Group
- Telstra Chief Executive Officer-Consumer Roundtable
- Chairperson and Member, Indigenous Advisory Group, Australian Communications Consumer Action Network Ltd
- Equalising Opportunities in the Law Committee - Queensland Law Society

# Invited Lectures / Forums / Seminars

- Loban H. Panel Member, 'Reviving the Republic' seminar organised by the Australian Republic Movement and the TJ Ryan Foundation, Queensland University of Technology, 19 July 2018.
- Loban H. Presenter, 'Best practice for leading multicultural witnesses', Australian Association of Crown Prosecutors Annual Conference, Cairns, 11-13 July 2018.
- Loban H. Presenter, Kungullanji Undergraduate Research Program, Indigenous Research Unit (IRU), Griffith University, 16 January 2018.
- West R. 'Cultural Safety – Allied Health Curricula. Interprofessional learning in First Peoples Health' International Indigenous Allied Health Conference, 30 November 2018.
- West R. 'National Conference on Indigenous Health Workforce Leadership – Panelist, University of Queensland, 2 November 2018.



# Our People, Our Stories, Our Way



Indigenous Research  
Unit

The Indigenous Research Unit logo represents all that the Unit stands for.

**Our community:** The IRU aims to develop and maintain productive relationships with Aboriginal and Torres Strait Islander people within the University. Through these relationships career and educational pathways are supported, with a specific focus on community-driven and applied research. This is represented by the innermost circle of black dots in the illustration. This circle also represents a meeting place.

**Strong partnerships:** IRU members are based within various faculties and schools and have connections with other research centres. Our emphasis is on strong partnerships that will increase opportunities for Aboriginal and Torres Strait Islander people in terms of career and educational prospects. The white circles that are connected to our Community from our participation within it - the black dot and the circles become part of our foundation by the red and black lines embracing the full structure.

**Community driven research:** The IRU aims to pursue projects that have been identified by the community. This requires proactive dialogue and engagement with community members. Each circle outside the main internal structure represents different Communities that have a pathway into the Network (black curved line with white dots) and an outcome from the relationship that will help shape the community (black line with a red line embedded). These pathways are a cycle representing a dynamic relationship that can be strengthened over time.

**Growing our own:** The Unit aims to grow its research portfolio, resulting in strong relationships with various Aboriginal and Torres Strait Islander Communities. From this research we will also develop our own approaches to research and grow the body of knowledge in this area. We will also advocate and work towards 'growing our own' Aboriginal and Torres Strait Islander academics and postgraduate students by facilitating pathways from undergraduate to postgraduate studies in partnership with the GUMURRII Student Support Unit. The growth of the Network is represented by the grey lines in the background reach outwards and expanding.