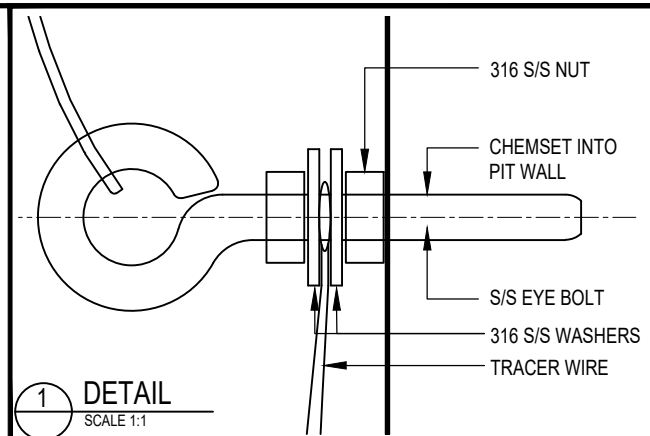
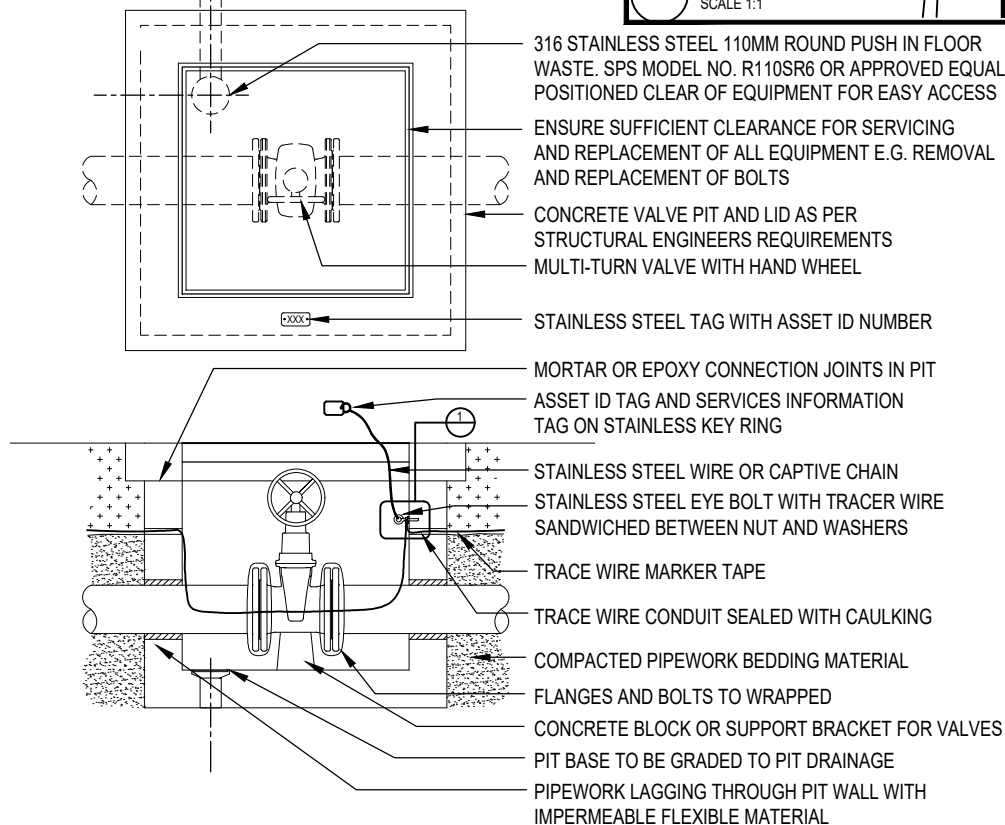


100 FLOOR WASTE TO
STORMWATER



GENERAL NOTES:-

- DECORATIVE EDGE COVERS SUCH AS STAINLESS STEEL AND BRASS ARE NOT TO BE USED.
- PIT LID FRAMES TO BE OF DUCTILE IRON CONSTRUCTION UNLESS OTHERWISE APPROVED AND GAS TIGHT.
- WHERE POSSIBLE ALL VALVES PITS ARE TO BE DRAINED DIRECTLY TO STORM WATER. REFER GU GUIDELINES
- FOR PITS THAT ARE UNABLE TO BE DRAINED TO STORM WATER REFER ALSO TO GSD-806 SERIES DRAWINGS FOR MINIMUM ABSORPTION PIT DRAINAGE SIZING.
- ENSURE COMPLIANCE WITH RELEVANT AUSTRALIAN STANDARDS AND LOCAL AUTHORITY REQUIREMENTS.
- VALVE PITS ARE NOT TO BE SHARED WITH ELECTRICAL OR COMMUNICATIONS.
- REFER TO PROJECT SPECIFIC DESIGN DRAWINGS FOR THE FOLLOWING INFORMATION:-
 - LID TYPE - SOLID, CONCRETE INFILL OR PAVEMENT INFILL.
 - MIN. LID CLASS LOADING - A,B,C,D,E,F,G.
 - MIN. LID SIZING - LENGTH, WIDTH.
 - NUMBER OF LIDS - SINGLE OR MULTI PART (MULTIPLE VALVES)
 - MIN. PIT SIZE - LENGTH, WIDTH & DEPTH.
- TRACER WIRE TO BE TAPED TO SIDE OF PIPE WORK AND PIT TO PREVENT ENTANGLEMENT WITH SPINDLE/S.
- CHAIN / WIRE TO SERVICE TAG TO BE OF SUFFICIENT LENGTH TO REMOVE FROM PIT FOR READING.
- STAINLESS STEEL EYE BOLT TO BE AS HIGH AS POSSIBLE IN PIT FOR CONNECTION OF TRACE EQUIPMENT.
- ALL TRACE WIRE TO BE TESTED AT TIME OF CONSTRUCTION.
- MULTIPLE CHILLED WATER VALVES CAN BE INSTALLED IN ONE PIT PROVIDED CLEARANCES FOR SERVICING AND REPLACEMENT OF EQUIPMENT ARE MAINTAINED
- ALL PITS TO BE INSPECTED BY GRIFFITH UNIVERSITY AND LIDS TO BE GREASED PRIOR TO COMPLETION OF WORKS
- PITS DEEPER THAN 1200MM REQUIRE STEP IRONS FOR EASY ACCESS OF VALVES

TITLE

CHILLED WATER VALVE PIT

PROJECT:

STANDARD DETAILS
HYDRAULIC SERVICES

Griffith UNIVERSITY
Queensland, Australia

PLANNING, DESIGN & CONSTRUCTION
CORPORATE SERVICES

170 KESSELS ROAD, NATHAN, BRISBANE, QLD. 4111 PH:(07) 3735 7111 griffith.edu.au

DATE

20/08/2021

DRAWN BY

JS

SCALE

NOT TO SCALE

APPROVED BY

JA

PROJECT No:

N/A

DISCIPLINE

HYDRAULIC

REVISION

1

DRAWING No:

GSD-808

SHEET No:

1 of 1