

How to...

Get Connected to Wi-Fi for Apple IOS
(iPhone or iPad)

Introduction

This guide will show you how to connect to Griffith University (Griffith) Wi-Fi on an iPad or iMac (Apple IOS). Before proceeding, please note the following:

- Screenshots may differ depending on device and software versions.
- You must be on campus to set-up and access the Griffith Wi-Fi network.
- We recommend updating your device to the latest version prior to connecting or the steps may vary slightly.
- Before starting the installation process, close all applications that use the internet. This includes Outlook and Microsoft Office 365.

Step 1: Remove the existing Griffith Wi-Fi network on your device

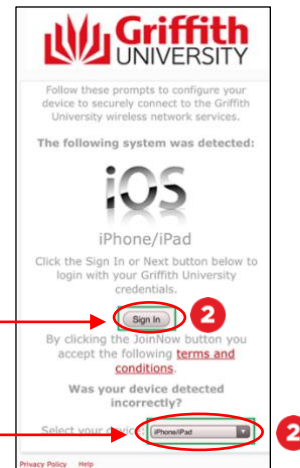
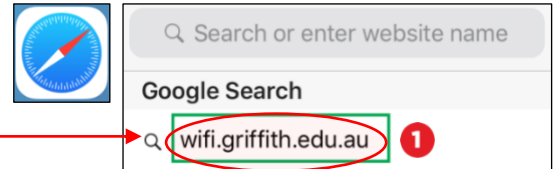
- This step **must** be completed, or the setup process will fail. If you have never connected before, skip to **step 2**.

- 1 Go to **Settings**, then **Wi-Fi** and select ***Setup Griffith Wi-Fi**.
- 2 Select **Forget This Network** and select **Forget**.
- 3 Go back to **Wi-Fi settings** and select ***Setup Griffith Wi-Fi**.



Step 2: Connect to Griffith Wi-Fi

- 1 Open **Safari web browser** (it must be Safari in this instance) and go to wifi.griffith.edu.au.
- 2 The type of device you are using will be automatically detected. If it is incorrect, select your device from the **dropdown list**. Once correct, select **sign in**.
- 3 Enter your Griffith credentials and select **Login** to gain one-off, secure authentication for the Griffith Wi-Fi.
- 4 Enter your Griffith credentials again at this screen and select **Join Now**. This will also grant you access to the [eduroam](#) Wi-Fi network. This can be used when visiting other research and educational institutions.



Step 3: Configure the profile to your device

- 1 Select **Allow** when asked about downloading a configuration profile.

- 2 If you have an Apple Watch, you must ensure the configuration occurs on the iPhone (not on the watch).

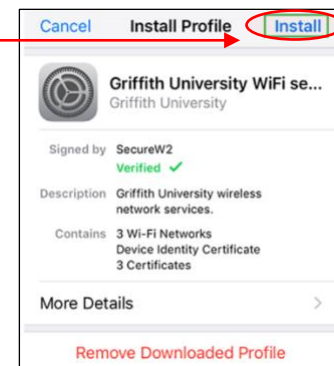
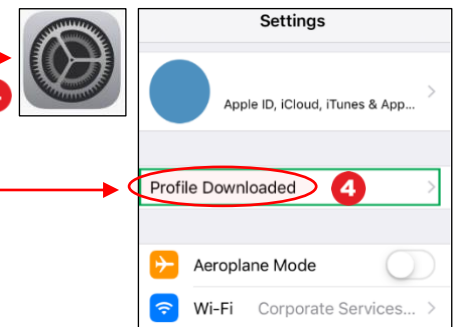
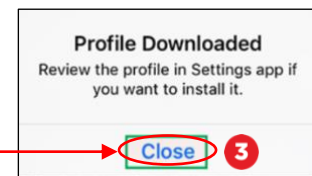
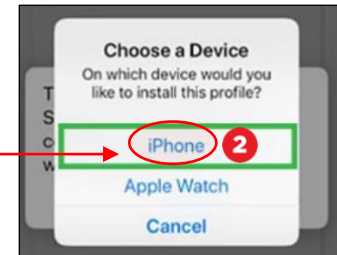
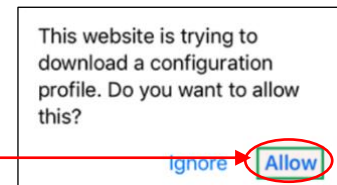
- 3 Select **Close** at the Profile Downloaded prompt.

- 4 Go to **Settings** and select **Profile Downloaded**, then **Griffith University Wi-Fi profile**.

Devices with older software will need to navigate through **Settings > General > Profile**. Select the Griffith University profile and then **Install**.

- 5 Select **Install**.

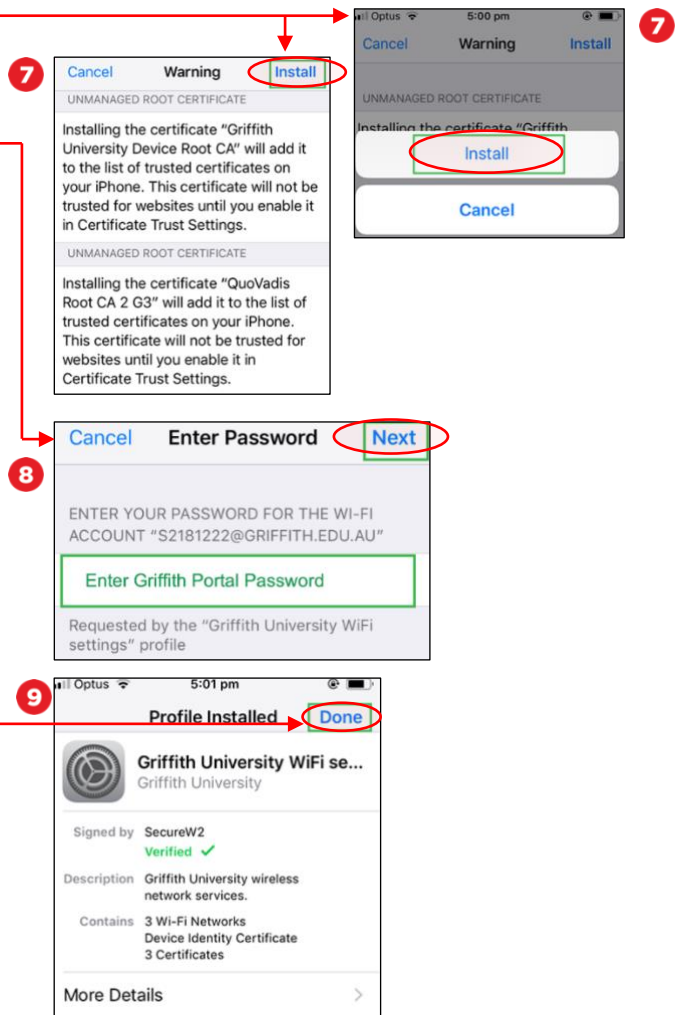
- 6 Enter your **Apple passcode** (this is specific to your device and is not administered by the University).



7 Select **Install** at the certificate warning, and at the **second** prompt.

8 Enter your Griffith portal password then select **Next**.

9 Once the enrolling certificate has completed, select **Done**.



Step 4: Complete the Wi-Fi Process

1 Select **Griffith University** as your preferred network under your Wi-Fi settings (it may take up to one minute for the network to appear).

Close all setup browsers.

You can now use the Griffith University Wi-Fi network.

2 To check you are using secure Griffith Wi-Fi, go to **Settings > General >** then scroll down to **profile** and confirm it is set to **Griffith University Wi-Fi**.

