

## Introduction

This guide will show you how to connect to the Griffith University Wi-Fi network on an Apple computer running macOS Sequoia.

**Before you start** - You must be on campus to complete the setup. You will also need to close all applications using Wi-Fi/Internet before attempting the steps in this guide (including Outlook and Microsoft 365).

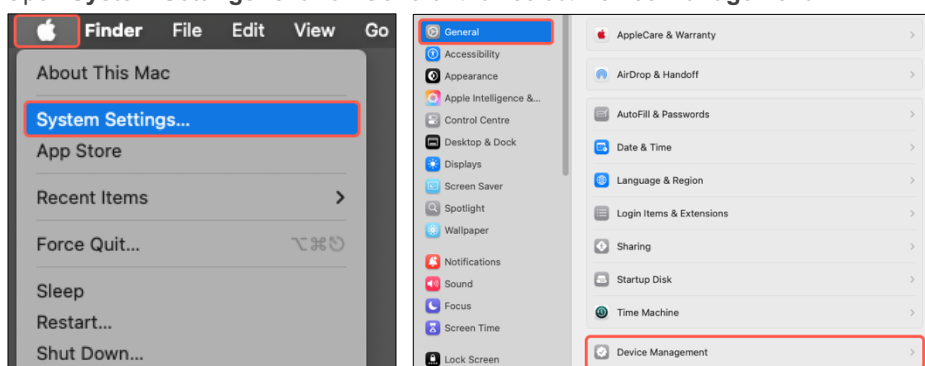
Screenshots in this guide may differ depending on device and software versions.

## Have you connected to Griffith Wi-Fi or Eduroam from your device before?

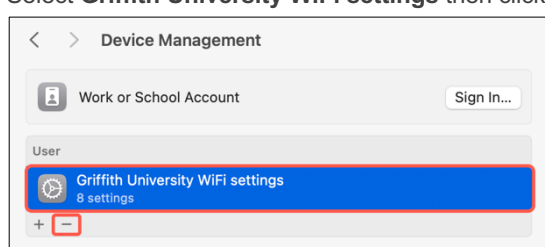
**No** – Continue to **Part A: Connect to \*Setup Griffith Wi-Fi** on the next page.

**Yes** – You will need to remove the existing **Griffith University WiFi settings** profile on your device.

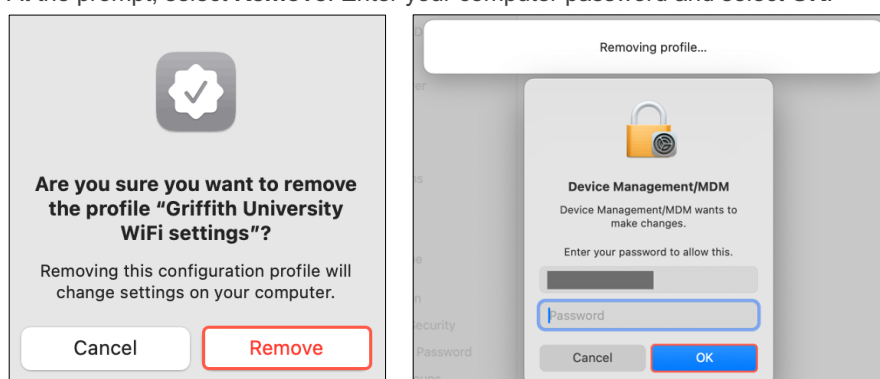
- 1 Open **System Settings**. Click on **General** then select **Device Management**.



- 2 Select **Griffith University WiFi settings** then click on the minus button [-] to remove the profile.



- 3 At the prompt, select **Remove**. Enter your computer password and select **OK**.



Once completed, continue to **Part A: Connect to \*Setup Griffith Wi-Fi** on the next page.

## Part A: Connect to \*Setup Griffith Wi-Fi

- 1 Open the **Wi-Fi** menu on your device. Select **\*Setup Griffith Wi-Fi** network and wait for your device to connect.

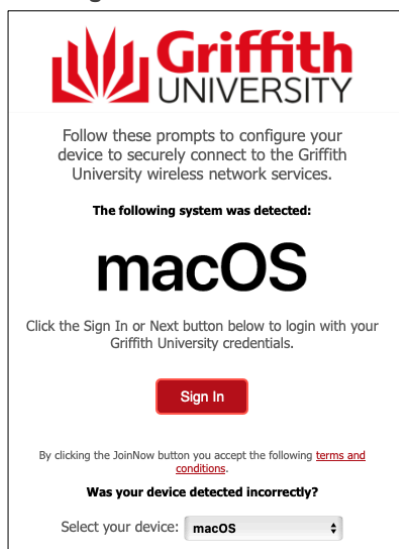


## Part B: Download and set up SecureW2 JoinNow

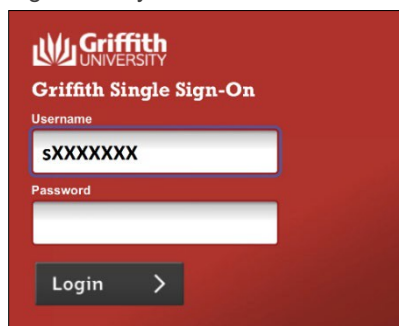
- 1 Open **Safari** and go to **wifi.griffith.edu.au**



- 2 Click **Sign In**.



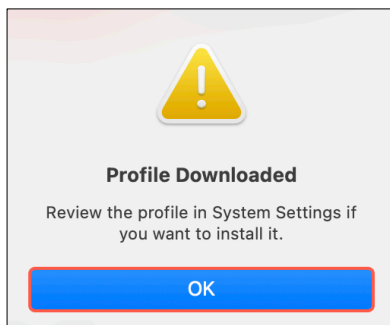
- 3 Sign in with your **Griffith sNumber** and **Griffith password** (e.g. sXXXXXXX).



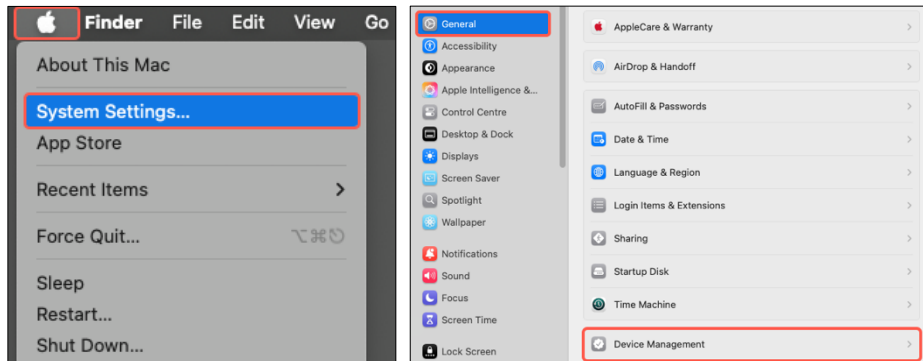
- 4 Enter your **sNumber** followed by **@griffith.edu.au** (e.g. sXXXXXXXX@griffith.edu.au) then click **JoinNow**.



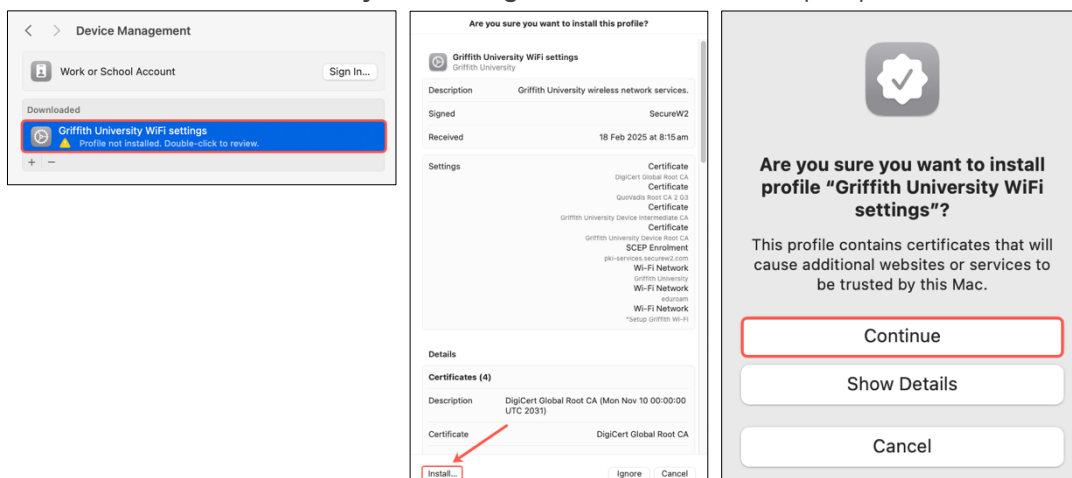
- 5 Once the profile has downloaded, click **OK** to close.



- 6 Open **System Settings**. Click on **General** then select **Device Management**.



- 7 Double-click on **Griffith University WiFi settings** and select **Install**. At the prompt click **Continue**.




- 8 Enter your **Griffith password** then click **Install**.

Enter settings for "Griffith University WiFi settings":  
Enter settings for the enterprise network "eduroam":

Password:

- 9 Enter your computer password and select **OK** to complete the installation process.

Installing profile...



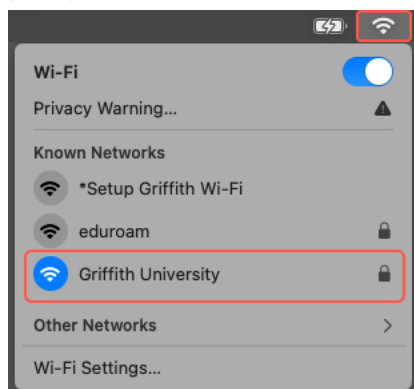
**Device Management/MDM**  
Device Management/MDM wants to make changes.  
Enter your password to allow this.

- 10 Once finished the **Griffith University WiFi settings** will show as installed.

If you receive an authentication error, the password entered may be incorrect and you will need to try installing the profile again.

## Part C: Test Wi-Fi connection

- 1 To complete the setup, open the **Wi-Fi** menu on your device and select **Griffith University** to connect.  
(It may take up to one minute for the network to appear)



- 2 Once connected, try browsing the internet to check your connection to Griffith University Wi-Fi is working correctly.