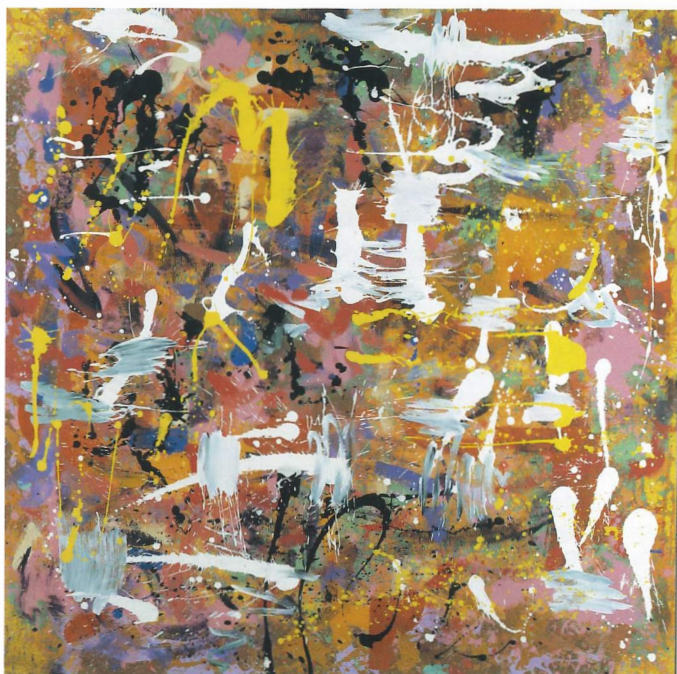


# COLONIAL to CONTEMPORARY

Queensland College of Art 125 Years

## Historical Overview 1881-1974

Part I of a series of exhibition and publication projects that give an overview of the development and ongoing role of one of Australia's oldest art teaching institutions. Presented by Griffith Artworks.



John PEART *Yellow Square* 1972 acrylic on canvas 154.5 x 153 cm.  
Collection Frank Watters. Photo: Richard Stringer.

## GALLERY GUIDE

### DELL GALLERY @ QCA

Queensland College of Art

Griffith University

226 Grey Street

South Bank QLD 4101

10 June - 16 July 2006

Opening hours:

Wed-Fri 11am-4pm

Weekends 12-4 pm

FREE ADMISSION



**WELCOME** to DELL Gallery. We are delighted to take part in 125th Anniversary celebrations at QCA, by presenting our largest group show to date. In it we trace individuals and artworks dating from J.A. Clarke's drawing classes at the Brisbane School of Arts [1881], the development of Brisbane Technical College [1884], its metamorphosis into Central Technical College [1909], College of Art [1972] and finally Queensland College of Art [1982], prior to amalgamation with Griffith University in 1992.

This Gallery Guide encourages you to follow the exhibit in order of installation. It illuminates roles played by individuals along the way, with reference to works from key periods in their practice or administration up until QCA was established at Seven Hills (Morningside) in 1974. Part II and III of the exhibition cycle will present work by artists and staff after 1974.



Frances Vida LAHEY *Mountain Flowers* 1951 watercolour on paper, image: 48.5 x 39cm Griffith University Art Collection Reproduced by kind permission of Shirley Lahey, Brisbane. Photographer: Griffith University Photo Services

#### Project Team:

Simon Wright  
Timothy Morrell  
Dr Craig Douglas  
Glenn Cooke  
Jo Duke  
Holly Arden  
Chris Handran  
Beth Porter  
David Mayocchi

Director Griffith Artworks / DELL Gallery @ QCA

Consultant Curator 125th Project

Senior Lecturer Art Theory, QCA

Research Curator, Queensland Heritage, Queensland Art Gallery

125th Project Officer / Collections Manager, Griffith Artworks

Curatorial and Collections Officer, Griffith Artworks

Exhibitions & Public Programs Officer, Griffith Artworks

Project Administration Officer, Griffith Artworks

PVC Arts Representative

With special thanks to:

Professor Mostyn Bramley-Moore, Director QCA

Professor Marilyn McMeniman, PVC Arts, Education, Law, Griffith University

Professor Pat Hoffie, Deputy-Director Research, QCA





**J.A. CLARKE (1840-1890)**

Joseph Augustus Clarke was born in Kent and studied at the Royal College of Art in South Kensington. He arrived in Australia around 1870. Clarke taught at the various Brisbane schools including All Hallows, the Catholic Girls School. It was here that he painted his pivotal work *Panorama of Brisbane* (1880). Clarke became the first teacher of drawing at the Brisbane School of Arts in 1881 and remained Art Master until his death in 1890.

**Isaac Walter JENNER (1836-1902)**

Isaac Walter Jenner was born in Godalming in Surrey. After serving in the British Navy during the Crimean War Jenner retired in 1865. As a self-taught painter he exhibited several times in England before migrating to Australia in 1883. In Brisbane, he taught art at several institutions around the city including the Brisbane Technical College from 1886 to 1889. He was a foundation committee member of the Royal Queensland Art Society, and one of the agitators for a public art gallery to be built in Brisbane. Jenner was well-known for his marine paintings both in oil and watercolour.

**Harold PARKER (1873-1962)**

Harold Parker, born in England, arrived in Brisbane in 1876. He studied art at the Brisbane School of Arts in 1888 under J.A. Clarke and took wood carving under Cuthbert Vickers around 1891-92. He travelled back to London to attend the City and Guilds Art School from 1896-1902, and completed apprenticeships with three of Britain's prominent sculptors by 1908. Parker gained international acclaim for his marble carvings, gaining honourable mention in several Paris Salon exhibitions, and subsequently secured major commissions. After brief visits to Australia in 1911 and 1921-22, Parker settled permanently in Brisbane in 1930.

**Richard RANDALL (1869-1906)**

After studying art at the Brisbane Central Technical College around 1890 and 1891, Brisbane born Richard John William Randall, also known as William Randall, studied in England at Herkomer's School of Art from 1891 to 1895. On his return to Brisbane in 1899 he established his own studio and conducted art classes. He was Vice-President of the Royal Queensland Art Society between 1902 and 1906, and a member of the Brisbane Sketching Club from 1904 to 1906.

**Godfrey RIVERS (1859-1925)**

Richard Godfrey Rivers, born at Plymouth in the UK, studied at the Slade School in London between 1877-83. He migrated to Australia in 1889 and was the Art Master at the Brisbane Technical College between 1890 and 1915. Rivers was an active member of the Queensland Art Society, holding the Presidency for several years.He worked tirelessly for the establishment of a State Gallery, which opened in 1895. There he held the positions of Honorary Secretary and Honorary Curator. In 1915 Rivers relocated to Tasmania.

**F.J. Martyn ROBERTS (1871-1963)**

Frederick James Martyn Roberts was born in Plymouth in the U.K. After arriving in Brisbane in the 1880s, Roberts studied art at the Brisbane Technical College. He was an Assistant Art Teacher at the College in 1896, and Acting Art Master, between 1898-99. Roberts taught at South Brisbane Girls High School and Ipswich Technical College during 1896, before completing his studies at the Julian Ashton School, Sydney, around 1897. On his return to Brisbane, he accepted the appointment as Acting Supervisor of Art at the Central Technical College from 1910 to 1915, and was full-time Supervisor of Art from 1916 to 1936. Roberts showed regularly at the Queensland National Association and the Queensland Art Society.

**Lloyd REES (1895-1988)**

In 1910, Brisbane-born Lloyd Frederic Rees won a scholarship to study art at the Central Technical College. In 1917, Rees worked as a commercial artist in the Sydney studio of Smith and Julius. He was Vice-President then President of the Society of Artists, and a foundation member of Australian Academy of Art in 1938. Rees taught drawing, painting and art history at the University of Sydney from 1946 to 1986. Rees travelled extensively throughout Italy, France and England. In 1964 he was elected Dean of Faculty of Architecture of the University of Sydney. In recognition of his services to art, Rees was appointed a Companion of the Order of St Michael and St George in 1977, a Companion of the Order of Australia in 1985, and the Medaille de la Ville de Paris in 1987.

**Edward COLCLOUGH (1866-1950)**

Edward Colclough, born in Brisbane, studied art at the Brisbane Technical College in the early 1880s. Colclough worked tirelessly to promote art in Queensland, and from 1899 held positions in several Brisbane art societies. He was Honorary Secretary to Trustees of the Queensland Art Gallery from 1930 to 1945.

**William BUSTARD (1894-1973)**

William Bustard, born in Yorkshire, studied at the Battersea Polytechnic, Putney, the Slade School in London, the Scarborough School of Arts, and Powell's Studios, where he learnt about working with stained glass. After serving in Italy in World War I, Bustard married and migrated to Brisbane in 1921. He taught art at the Central Technical College during the 1920s. He was Chair of the Art Advisory Council at Queensland Art Gallery between 1931-37, and President of the Royal Queensland Art Society in 1932.

**Frankie PAYNE (1885-1975)**

Frances Mallalieu Payne studied art at the Brisbane Technical College in the early 1900s before attending the Ecole d Beaux-Arts in Paris, and studying under Frank Brangwyn in London. She returned to Brisbane where she exhibited her paintings of landscapes and portraits with the Queensland Art Society between 1902-15 whilst working as an illustrator with the *Brisbane Courier*. Moving to Sydney, Payne continued painting, exhibiting with the Royal Art Society from 1923.

**Vida LAHEY (1882-1968)**

Frances Vida Lahey, born in Pimpama, Queensland, studied art at the Brisbane Technical College from around 1903. Lahey then studied at the Melbourne National Gallery of Victoria School from 1905-09. After returning to Brisbane, she gave private lessons before departing for London in 1915. After World War I, she studied at the Paris Academy and exhibited at the Paris Salon. Returning to Australia she exhibited regularly in Brisbane and Sydney during the 1930s and 40s. She was a foundation member of the Australian Academy of Arts and a member of the Art Advisory Committee for the Queensland Art Gallery, 1931-37. Lahey was appointed to The Order of the British Empire – Member (Civil) in 1958 for services to art in Queensland.

**Bessie GIBSON (1868-1961)**

Elizabeth Gibson, born in Ipswich, Queensland, studied art at the Brisbane Central Technical College from 1899 to 1905. She moved to Paris in 1906, initially continuing her studies in miniatures at the Casteluccho's under Frances Hodgkins. By the time Gibson returned to Brisbane in 1947, she had won several awards for her paintings, which had expanded from the original miniature portrait format to include landscapes and still life.

**Josephine MUNTZ-ADAMS (1862-1950)**

Josephine Muntz-Adams, born in Barfold, Victoria, studied at the National Gallery Victoria School between 1884 and 1889 before venturing overseas to study at Colarossi's in Paris and Herkomers School in England, where she was awarded a gold medal at the Greater Britain Exhibition in London in 1898. Returning to Australia, Muntz-Adams spent some time in Western Australia and Melbourne. From 1917 to 1922, she taught painting at the Central Technical College, before settling in Victoria.

**L.J. HARVEY (1871-1948)**

Lewis Jarvis Harvey was born in England in 1871 and migrated to Australia in 1874. After studying art at the Brisbane Central Technical College, L.J. Harvey taught at the College part-time from 1902 to 1915 and then full time. In 1937 he left the College to establish the L.J. Harvey School of Applied Arts. Harvey was a member of the Advisory Committee of the Queensland Art Gallery, a life member of the Queensland Art Society and the Arts and Crafts Society of Brisbane, and a founding member of the Half Dozen Group (1940). A specific art style in ceramics was named the L.J. Harvey School of ceramics in his honour. Exponents of the school included Mona ELLIOTT (nee Lawton, 1872-1964), Nelly (Helena) HARRIES (1877-1956), Billie (Doreen Ida) L'ESTRANGE (1908-96), Val McMASTER (1913-83) and Edith WHITE (nee Potter, 1886-1968).

**Daphne MAYO (1895-1982)**

Lillian Daphne Mayo, born in Sydney, studied art at the Central Technical College from 1911-13. In 1914 she was awarded an overseas scholarship but held off travelling until after the war. She studied instead under Julian Ashton in Sydney c.1915-16. Overseas, she studied at the Polytechnic, London (1919) and between 1920-23 at the Royal Academy Schools. After living and studying in Italy from 1924 to 1925, Mayo returned to Brisbane. She went on to become one of Australia's most distinguished sculptors, and a respected committee member and teacher. Perhaps her best-known commissioned work is the Brisbane City Council Town Hall's triangular tympanum, carved between 1927-30. She was the first woman to be awarded a gold medal for sculpture at London's Royal Academy and actively lobbied and fundraised for a new premises for the QAG. She was joint administrator (with Lahey) of the Godfrey Rivers Trust, which worked towards building the QAG collection. Mayo was appointed to The Order of the British Empire – Member (Civil) in 1959 for services to art in Queensland.

**Melville HAYSOM (1900-1967)**

Melville Haysom, born in Melbourne, studied at the National Gallery of Victoria School in Melbourne. He moved to Queensland in 1929 where he wrote for the Brisbane *Observer*, critiquing the Brisbane art scene. From 1948 till 1966, Haysom was an Instructor of Painting at the Central Technical College. He was the President of the Royal Queensland Art Society and was awarded the Godfrey Rivers Bequest Prize in 1935.

**W.G. GRANT (1876-1951)**

William Gregory Grant, born in Brisbane, attended night art classes at the Brisbane Technical College whilst studying accountancy. Grant, along with his wife Gwendolyn (nee Stanley), were active members of the Brisbane art scene. He was a member of the Royal Queensland Art Society as well as the Victorian Art Society. Grant held the position of trustee at the Queensland Art Gallery from 1946 to 1951.

**Francis LYMBURNER (1916-1972)**

Francis Lymburner was born in Gympie, Queensland, and studied art at the Central Technical College from 1934 to 1936. Lymburner moved to Sydney in 1939 and continued painting, supported in part by a Queensland patron. In 1942 he was conscripted into the army. After the war Lymburner joined the Contemporary Art Society of NSW, and the Sydney Group. In 1953 he travelled to Europe and the UK, returning to Australia in 1963. Lymburner won several awards including the Godfrey Rivers student medal (1936) and his works are held in collections throughout Australia.

**Cyril GIBBS (1906-1992)**

Cyril Gordon Gibbs, born at Yackandandah in Victoria, graduated from the Ballarat Art School in 1929. He lectured at Swinburne Technical College in Melbourne. In 1930 he moved to Sydney to teach art and painting in 1931, and then to Queensland in 1934 where he established the commercial art firm, Gibbs-Smith Studio, in 1936. Gibbs was Head of the Art School at the Central Technical College from 1938 until 1971. During his tenure, for a fourteen-year period, he was also a Trustee of the Queensland National Art Gallery, and a member of the Art Advisory Board to Trustees.

**Douglas ANNAND (1903-1976)**

Douglas Annand, born in Toowoomba, Queensland, studied art part-time at the Central Technical College, while working at a local bank in the early 1920s. In 1930 he moved to Sydney to work in advertising. Annand won acclaim for his graphic designs and became known for his mural and sculptural works, securing many commissions from commercial businesses. He designed the ceiling for the Australian Pavilion for the Paris Exposition in 1937, and was the art director of the Australian pavilion for the 1939 New York World Fair. During his tour of duty as a member of the camouflage unit in World War II, Annand painted and drew much of Australia.

**Kathleen SHILLAM (1916-2002)**

Kathleen Shillam (nee O'Neill) was born in Devonshire and arrived in Australia in 1927. After arriving in Brisbane, Kathleen Shillam studied art at the Central Technical College from 1932 to 1933. She worked in advertising in Brisbane and Sydney from 1934 to 1940 and in 1942, married fellow artist Leonard Shillam. Although initially known for her drawings, Shillam worked full-time as a sculptor from 1950 and taught at several Brisbane art institutions. From 1961 to 1964 Shillam studied bronze casting at the Royal College of Art, London. She and her husband Leonard were founding members of the Society of Sculptors and regularly exhibited throughout Australia. Shillam was awarded the Order of Australia (General Division) in 1986 and Honorary Doctorate from the University of Queensland in 2000.

**Leonard SHILLAM (1915-2005)**

Leonard George Shillam, born in Brisbane, studied art at the Central Technical College between 1931 and 1934, where he met his future wife Kathleen O'Neill. On receiving a grant from the Carnegie Corporation in 1938, Shillam studied sculpture and drawing at St Martin's School and the Central School of Arts and Crafts, both in London. He also studied at the Florence Academy between 1961 and 1964. Shillam taught at the College until he left to work full-time as a sculptor in 1950. He returned in 1975 as Instructor in Sculpture at the College, which he held until 1980. Shillam and his wife, Kathleen, were founding members of the Society of Sculptors and exhibited regularly throughout Australia. He was awarded the Order of Australia (General Division) in 1986 and Honorary Doctorate of Philosophy at the University of Queensland in 2000.



**Joe ROOTSEY (1918-1963)**

Joe Rootsey, of the Barrow Point people (Amu Wuringu clan), lived and worked as a stockman in country north of Cooktown, in East Cape York, and eventually settled at 'Olivevale', near Laura. He did not start painting until 1954 when, diagnosed with tuberculosis, he was confined to a Cairns hospital for two years. His first solo exhibition was in Cooktown, and in the late 1950s he studied art for six months at the Central Technical College, Brisbane, under the sponsorship of the Native Affairs Department.

**Margaret OLLEY (b.1923)**

Margaret Olley, born in Lismore, New South Wales, studied art at the Central Technical College in 1941. She then attended the East Sydney Technical College from 1942 to 1947. Olley travelled to England and Paris in 1949 and attended classes at the Academie de la Grande Chaumière. Returning to Australia in 1954 she travelled through far north Queensland and New Guinea before settling in Sydney in 1965. Although Sydney became her home base, she continued travelling throughout Asia and Europe. She has received many awards and prizes and in 1997 was declared an Australian National Treasure. She continues painting today and is represented by Philip Bacon Galleries, Brisbane and Australian Galleries, Sydney/Melbourne.

**John RIGBY (b.1922)**

John Thomas Rigby, born in Brisbane, studied art at the Central Technical College between 1937 and 1938. After serving in the Australian Imperial Force during World War II, he studied at the East Sydney Technical College under the Commonwealth Rehabilitation Training Scheme from 1948 to 1951. In 1956 he studied in Italy after winning the 1956 Italian Government travel grant. From 1956 to 1958 he also visited London and France. Returning to Australia, Rigby took up the position of Officer in charge of Fine Arts at the College from 1974 to 1984. He is a Fellow of the Royal Society of Artists in London, and a member of the Half Dozen Group in Brisbane. A monograph, *John Rigby – Art and Life*, was published in 2003.

**Milton MOON (b.1926)**

Milton Moon was born in Melbourne. After leaving the Navy in 1947, he studied art at the Central Technical College before studying privately with Margaret Cilento from 1949 to 1951. He was taught wheel-throwing by Mervyn Feeney, a traditional potter living in Brisbane. After a career in broadcasting and television in 1947 to 1962, Moon returned to pottery, becoming a Senior Pottery Instructor with the Central Technical College in 1961 till 1968 when he took up the appointment of lecturer at the South Australian School of Art in from 1969 till 1975. He has been exhibiting since 1959 and currently lives and works in Adelaide. Moon was awarded the Member of the Order of Australia in 1984.

**Gordon SHEPHERDSON (b.1934)**

Gordon Shepherdson, born in Brisbane, attended several private classes with Caroline Barker at the Royal Queensland Art Society in 1960. In the same year, he attended the Central Technical College for a short period under lecturers Arthur Evan Read and Melville Haysom. Shepherdson later attended the drawing classes of Jon Molvig and drawing and painting classes with Andrew Sibley around 1961. He has exhibited extensively since 1962, and is represented by Philip Bacon Galleries, Brisbane.

**John ALAND (1937-2005)**

John Aland, born in Brisbane, studied art at the Central Technical College between 1958 and 1959. After a stint of teaching in Queensland schools in 1960 and 1961, he set up his own studio, giving private lessons and conducted drawing classes between 1965 and 1967. In 1968 Aland relocated to Sydney and continued his art practice from there. His writing has also been published in such journals as *Art and Australia*.

**Carl McCONNELL (1926-2003)**

Carl McConnell was born in Chicago, USA. He moved to Brisbane in 1945-46. McConnell studied sculpture at the Central Technical College in 1948 with support under the G.I. Bill of Rights. During this time he assisted Hatton Beck in the pottery studio. McConnell was Instructor of Painting and Carving from 1952 to 1954, when he left to set up his own pottery studio in Norman Park. From 1958-62 he was appointed Instructor in Pottery at the College. He left to commence working full-time at his Pinjarra Pottery in the early 1960s, where he gained his reputation as one of Australia's most notable ceramists. He returned to the College from 1970 to 1974 to teach sculpture. He travel extensively overseas, particularly through Asia. He was awarded several Honorary Doctorates as well as the Order of Australia.

**Roy CHURCHER (b.1922)**

Roy Churcher was born in Surrey and studied at Sutton School of Art, Sutton, England, between 1947 and 1951 and at the Slade School, London, from 1953 to 1956. In 1955 he married Australian artist Betty Cameron and moved to Brisbane with her in 1957 where he set up his studio. He taught at the Central Technical College from 1962 to 1970 and at Eastaus Art School in Brisbane from 1976 to 1984. Churcher was awarded a scholarship to Rome in 1972 and taught part-time at Curtin University in Western Australia between 1987-90.

**John PEART (b.1945)**

John Peart, born in Brisbane, studied art at the Central Technical College between 1963 and 1964 before moving to Sydney in 1965. After successfully securing a grant in 1969 he traveled to Europe, USA and UK. He ended up staying overseas until mid-1970s, living in New York and England. Peart has been exhibiting nationally and internationally since 1965 and currently lives and works in Sydney. Courtesy of Watters Gallery, Sydney; Charles Nodrum Gallery, Melbourne.

**Betty QUELHURST (b.1919)**

Betty Pauline Quelhurst, born in Laidley, Queensland, studied art at the Central Technical College from 1937 to 1942, then taught at the Central Technical College as a trainee. From 1948 to 1950 she studied at the National Gallery of Victoria School. Quelhurst travelled to Europe from 1952 and 1953 and studied in Paris. She then taught full-time at the Brisbane Central Technical College from 1966. She retired from teaching in 1984 and remains one of the Art College's longest serving lecturers. Quelhurst is well known for her landscapes and portraits.

**Irene AMOS (b.1927)**

Irene Amos, born in Brisbane, studied art at the Central Technical College from 1960 to 1964 before attending summer schools at University of New England, and the University of Queensland. She travelled through Europe and U.K. from 1971-72. Amos has won several awards including the Godfrey Rivers Memorial Award in 1961 and the Kenneth MacQueen Memorial Award in 1962. She was the first Queenslander to be awarded a PhD in arts practice, conferred by University of Wollongong in 1990, and still exhibits regularly.