

Information Package QMNC

Director, Queensland Micro and
Nanotechnology Centre

Science, Environment, Engineering
and Technology Group

Griffith University
Queensland, Australia

October 2008

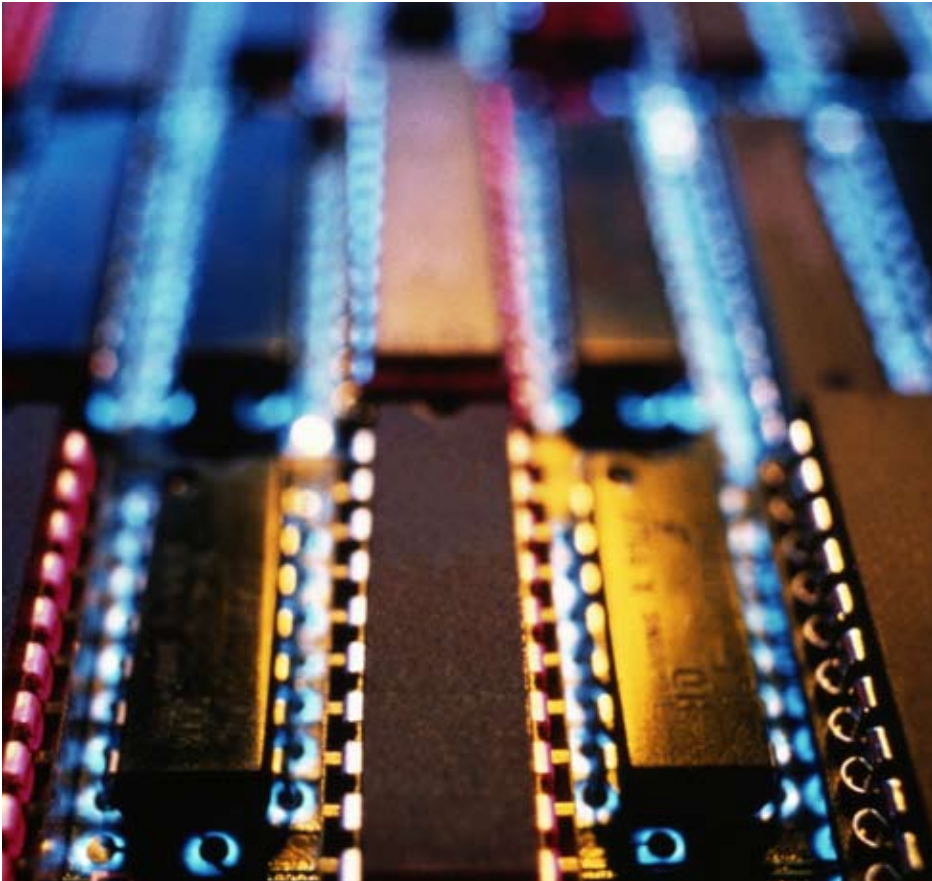


Table of Contents

	P
About Griffith University	2
University Structure	3
Position Advertisement	4
Griffith University Organisational Chart	5
SEET Organisational Chart	6
General Information – Teaching and Research	7
About Brisbane, the Gold Coast and Griffith campuses	8





About Griffith University

Griffith is an innovative university committed to multidisciplinary teaching and research, and the creation and communication of knowledge.

It has five campuses in three cities across the Brisbane – Gold Coast corridor and is one of Queensland's largest universities. It has more than 36 000 students and 3500 staff and an approximate annual budget of \$535 million.

Historically, its legacy includes Queensland's oldest academy – the Queensland College of Art (founded in 1881), Australia's fastest growing campus (Gold Cost), and Australia's newest medical and dental schools (2004).

The Griffith community comprises students from more than 122 countries and academic staff who set a rigorous pace in the achievement of research and teaching excellence.

The University's academic activities are grouped into four broad areas: Arts, Education and Law; Business; Health; Science, Environment, Engineering and Technology. These groups are the prime entities for the delivery of teaching and research and are focused on particular areas of academic activity.

Further information about the University is available from the About Griffith website at: www.griffith.edu.au/about-griffith

Staff Resources

Office of Human Resource Management
www.griffith.edu.au/hrm

Position Classification Standards for Academic/General Staff
www.griffith.edu.au/hrm/recruitment/classification.html

Staff Collective Bargaining Agreements
www.griffith.edu.au/hrm/employee_relations/agreements.html

Discovering Griffith (for new staff)
www.griffith.edu.au/hrm/for_you/new_staff.html

Griffith University Privacy Plan
www.griffith.edu.au/ua/aa/vc/pp/

University Structure

The Council of the University has overall responsibility to ensure sound and effective governance of the University. Without limiting Council's governing role, the *Griffith University Act 1998* confers the following particular powers on Council:

- to appoint the University's staff
- to manage and control the University's affairs and property; and
- to manage and control the University's finances.

The Vice Chancellor and President is the Chief Executive Officer of the University and is responsible to the Council of the University.

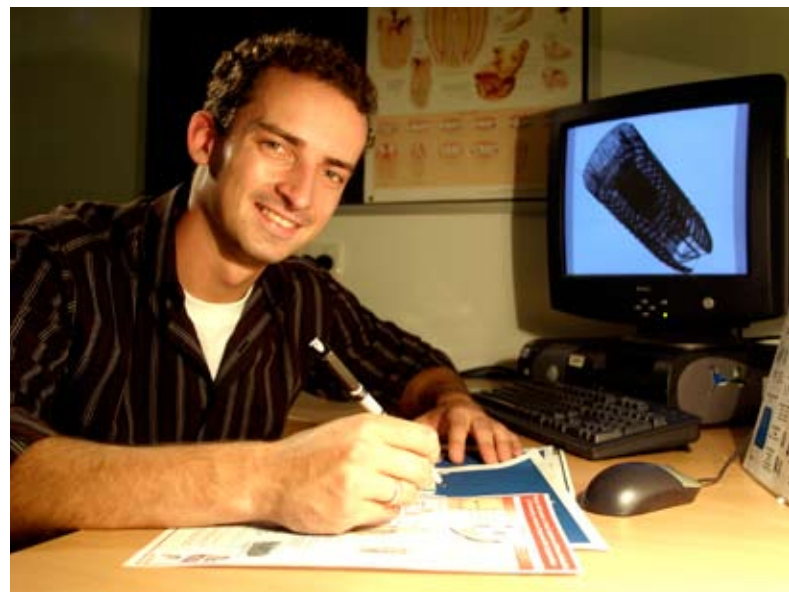
The University's Executive Group comprises the Vice Chancellor, Deputy Vice Chancellors and Pro Vice Chancellors. It meets on a weekly basis to deal with current strategic and management matters.

- Vice Chancellor and President
- Deputy Vice Chancellor (Academic) (includes responsibility for student equity matters)
- Deputy Vice Chancellor (Research) and Deputy President (includes responsibility for staff equity matters)
- PVC (Learning and Student Outcomes)
- PVC (Arts, Education and Law)
- PVC (Business)
- PVC (Health)
- PVC (Science, Environment, Engineering, and Technology)
- PVC (Community Partnerships)
- PVC (Administration)
- PVC (Information Services)
- PVC (International)

To see the full picture of Griffith's structure, please access the Organisation Chart from: www.griffith.edu.au/about-griffith/organisation.html

To see the structure of the University's Administration, please view: www.griffith.edu.au/hrm/pdf/ua-org-chart.pdf

The following chart outlines all reporting committees to council: www.griffith.edu.au/ua/aa/secretariat/committee



Position Advertisement

Director, Queensland Micro- and Nanotechnology Centre
Level E, Continuing, Full Time, Nathan campus

Reference: QMF0161/08

Queensland Micro- and Nanotechnology Centre (QMNC)

Overview

The Queensland Micro- and Nanotechnology Centre (QMNC) is a newly formed research centre in the Science, Environment, Engineering and Technology (SEET) Group, and incorporates the Queensland Microtechnology Facility (QMF); a purpose built facility developed in partnership with the Queensland State Government to provide a development platform for silicon carbide on silicon technologies.

The QMNC has a developing research program based around the themes of sustainable energy technologies, novel devices and materials, complex systems and signals, and theory and modelling. The current project mix under those themes includes: sensors for hazardous materials based on functionalised carbon nanotubes; advanced materials for hydrogen storage; metal oxide semiconductor (MOS) capacitors on silicon carbide; novel memory technology based on silicon carbide; enhancement of silicon solar cells; intelligent memory networks: application to automatic face and speech recognition; and theory of nanoporous materials.

The role

The Director will be responsible for leading and developing the QMNC, coordinating QMNC research plans and programs in close consultation with relevant Griffith researchers and external research partners, sourcing funds to support research, and overseeing commercialisation activities.

The Director will be expected to position and market QMNC as a principal provider of research solutions in micro- and nanotechnology, commercialise research outcomes where applicable, and to manage the QMF as a premier microtechnology research and demonstration facility.

The person

The Director is responsible for the development and achievement of the Centre's research strategy, performance indicators and targets, and the efficient, effective and equitable operation of the Centre.

The Director must also liaise effectively with the Centre Advisory Board, through the Board Chair, in relation to developments and achievements of the Center, and for the Board to provide advice to the Deputy Vice Chancellor Research and the Pro Vice Chancellor Science Engineering Environment and Technology.

The University has a responsibility to the Queensland State Government through its Smart State Research Facilities Fund (SSRFF) to report against obligations in relation to the QMF. The Director assumes the primary responsibility for this reporting obligation, and for performance against agreed milestones in relation to the SSRFF agreement.

Salary

\$128,919 per annum. Salary package includes 17% employer superannuation contribution: \$150,836 per annum.

Further information:

Position description and application information
www.seek.com.au/users/apply/index.ascx?Sequence=70&PageNumber=1&JobID=14121143

Enquiries

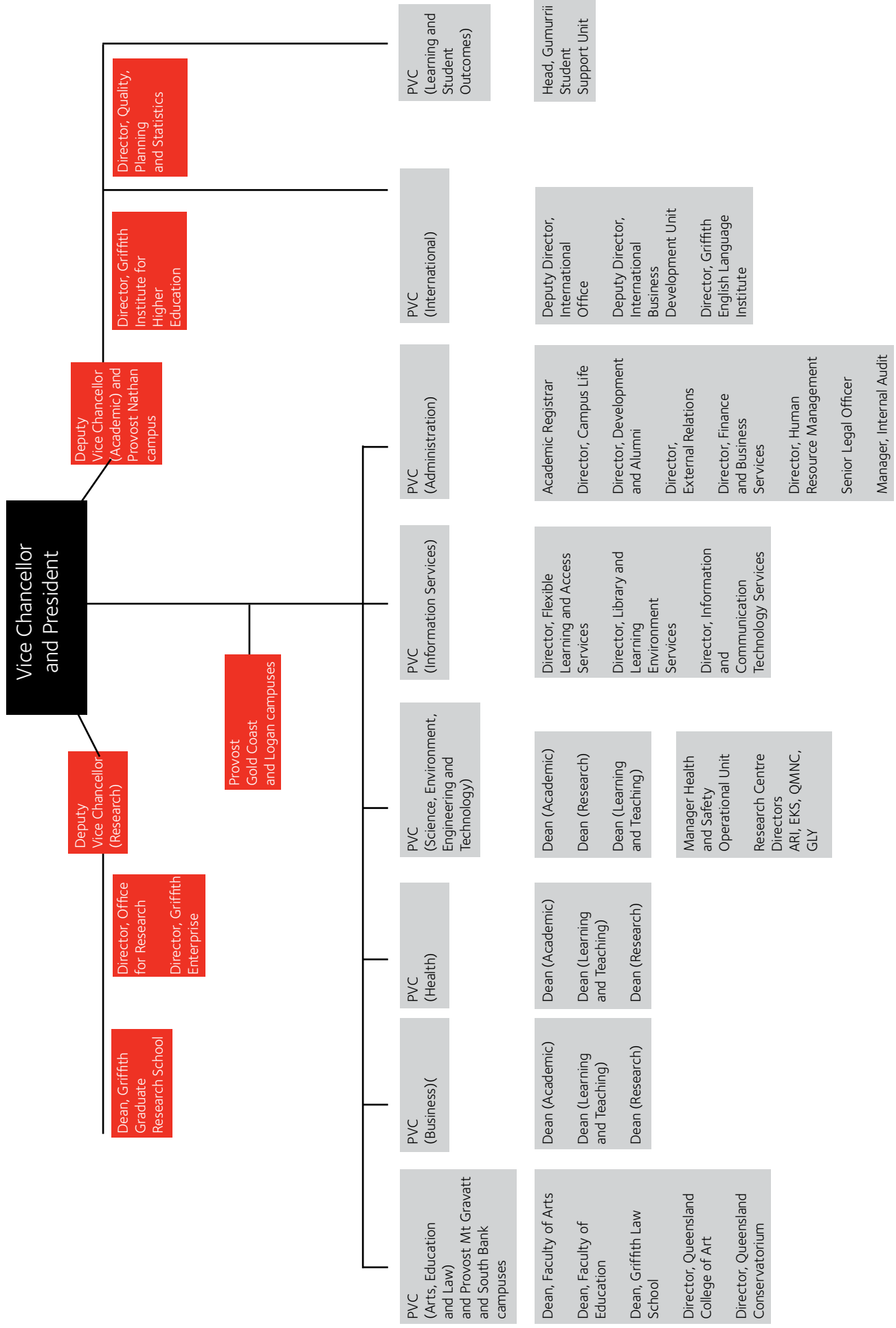
Professor Ned Pankhurst
Email: n.pankhurst@griffith.edu.au
Telephone: (07) 5552 8033

Applications close

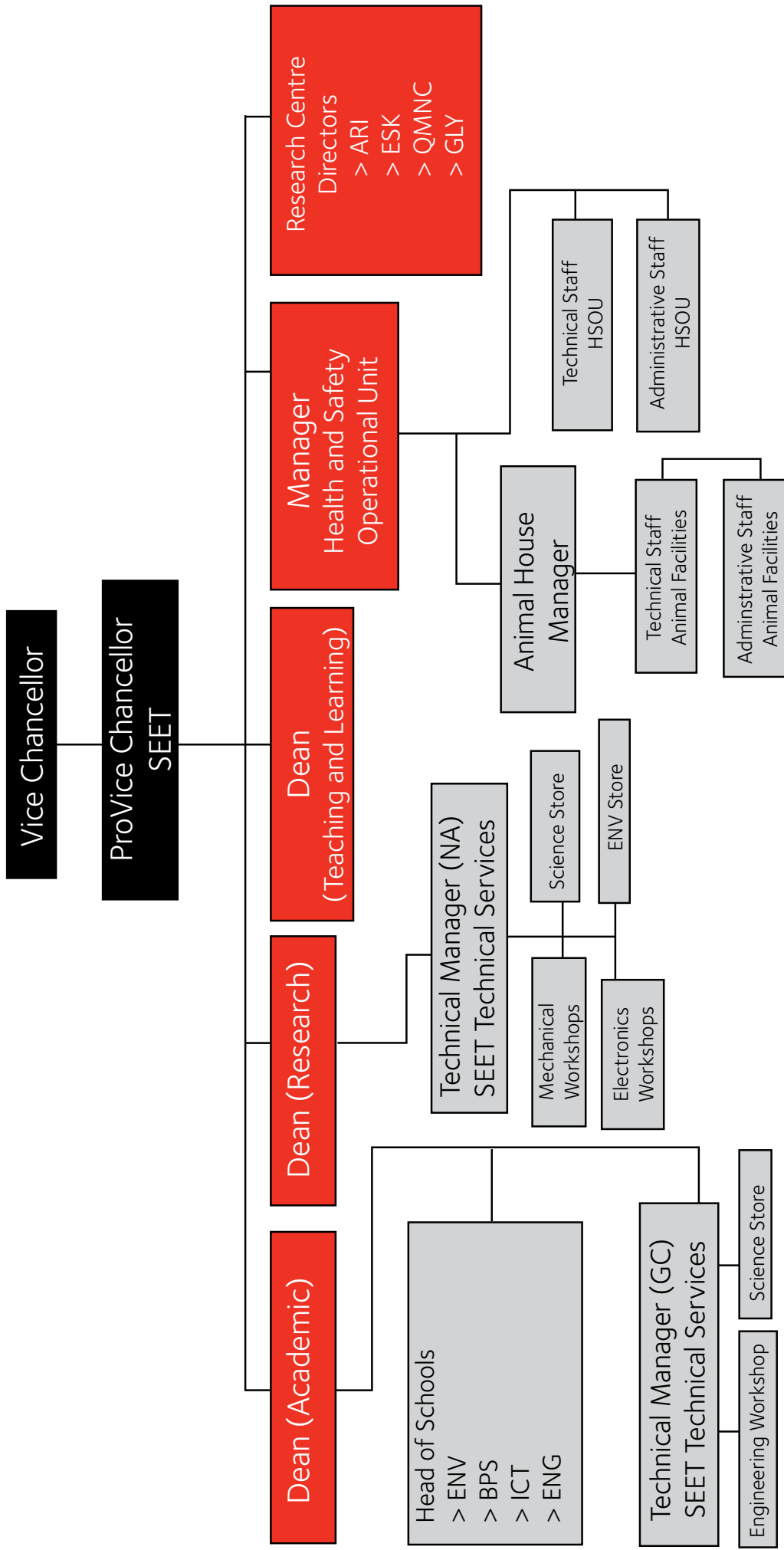
Friday 14 November 2008

Griffith University Organisational Chart

February 2008



Griffith University SEET Organisational Chart



General Information

Teaching

As Australia's leading University in multi-disciplinary education and student-centred learning, Griffith University is committed to enhancing the quality of teaching and learning to further improve student learning experiences and student outcomes. Teaching in the University takes an interdisciplinary approach and, as such, staff may be members of one or more teaching teams. These teams are responsible for developing, presenting and reviewing the interdisciplinary undergraduate courses offered by the University, as well as for monitoring, administering and, with the aid of the Griffith Institute for Higher Education, evaluating these courses. Teaching teams also contribute to the development of flexible learning initiatives and to the flexible delivery of undergraduate and postgraduate courses. In this way, staff contribute to decisions regarding the material to be taught, the method of presentation, the assessment methods of the courses, as well as participating in the teaching and assessment processes.

Staff with appropriate qualifications are also required to participate in the supervision of research and thesis preparation by postgraduate research MPhil, MVA, DVA and PhD candidates.

Staff may be required to teach at night and on campuses other than their base campus.

Research

Griffith is internationally recognised for its research strength in areas such as education, humanities, languages, environmental science, psychology, modern Asian studies, Australian public sector management, media policy studies, nanotechnology, molecular biology, biotechnology and biomedical sciences.

Griffith's international research profile continues to grow in the 21st Century, with its increase in research activities being complemented by the contributions of more than 1000 students in research training degrees.

Group research involving contributions from specialists in different disciplines has been shown to be a fruitful approach to complex administrative or organisational problems. The University is enthusiastic about the opportunities and responsibilities for multidisciplinary research, both as a valid aim in itself, and as a way of enhancing and encouraging multidisciplinary teaching.

Despite its overall commitment to multidisciplinary research, the University accepts that individual and single-discipline research remains an important element in its intellectual well-being and in the relationship of staff with outside organisations, in both the public and private sectors.

Griffith is involved in numerous Australian national research centres. Among these are the Heart Foundation Research Centre, AstraZeneca R&D Griffith University, Centre for Biomolecular Science and Drug Discovery, Centre for Public Culture and Ideas, Centre for Deafness Studies and Research, Family Law Research Institute, the Key Centre for Ethics, Law, Justice and Governance, Australian Institute for Suicide Research and Prevention, the Griffith University Neuropsychology Unit and the Genomics Research Centre.

Research involvement with industry and government is reflected in Griffith's participation in Cooperative Research Centres, especially in environmental sciences and information technology.

Griffith Institute for Higher Education (GIHE) offers several postgraduate award courses in higher education for academics from Griffith University and elsewhere. It also contributes at the School, Faculty and University levels in the development of coherent academic policy and practice and organisational change. In addition to programs tailored for Schools, GIHE organises and sponsors University-wide or campus-specific symposia, workshops, public lectures, and seminars.

The academic faculty members of GIHE specialise in various fields of professional development, scholarship and research. Their own areas of academic research are broadly aligned with their teaching and developmental roles. The Director reports to the Deputy Vice Chancellor (Academic). An Institute Administration Officer, and a number of specialist staff support the academics. GIHE operates on all University campuses, and has its base on the Mt Gravatt campus in Brisbane.

In its professional development role, GIHE collaborates closely with other elements within the University, including Schools and Faculties; the Office for Research; the Office of Human Resource Management; Academic Administration; Flexible Learning & Access Services; Learning Assistance Services; and Information Services.

About Brisbane, the Gold Coast and Griffith's campuses

Brisbane is Australia's third largest city with 1.6 million inhabitants. It is the capital city of Queensland and, as such, offers opportunities for consulting with business and industry. Cosmopolitan Brisbane is clean, modern, relaxed and offers cultural amenities, public parks and gardens, recreational facilities, fine restaurants and sidewalk cafes. Brisbane justifiably claims to be Australia's most liveable city. Visit Brisbane City Council's website: www.brisbane.qld.gov.au/index.shtml

The Gold Coast is one of Australia's premier tourist destinations. The region enjoys a subtropical climate and offers cultural and sporting amenities, restaurants and sidewalk cafes, as well as sailing, surfing, scuba-diving and some of the world's best light tackle and game fishing. The Gold Coast is also a centre of commerce and offers opportunities for consulting with business and industry. Visit Gold Coast City Council's website: www.goldcoast.qld.gov.au/home.asp

Griffith University has five campuses strategically located in the Brisbane–Gold Coast corridor, the fastest growing region in Australia.

Gold Coast campus, situated on a 26-hectare bushland site located approximately 70 km south of Brisbane, just west of Southport, is in the heart of the Gold Coast. As one of the fastest growing areas of Australia, the present permanent population is over 507,000 with the proportion of the population in the high school age group higher than the national average. The student population of the campus is over 13 000.

Logan campus is situated at Meadowbrook, Logan City. The large 56-hectare site borders a golf course, Motorway and Slacks Creek. This campus serves the rapidly growing populations of Logan City, the Beaudesert and Redland Shires and the Beenleigh district. Visit the Logan City website: www.logan.qld.gov.au/. The Logan campus has over 2 700 students.

Mt Gravatt campus is located in the next suburb to the Nathan campus in the scenic bushland setting of Toohey Forest and is approximately 10 km south of Brisbane City. The campus has a student population of approximately 4 700 students.

Nathan campus The University's original site, has a student population of more than 12 000. It is located in 175 hectares of beautiful natural forest which is a declared flora and fauna reserve adjacent to the Toohey State Forest, at Kessels Road, Nathan, 10 km southeast of the Brisbane city centre (10 minutes drive by freeway). Nathan campus also houses much of the administrative effort for the University. Most of the University's executive team and many major administrative offices are located on this campus.

South Bank campus is the home of the Queensland College of Art, the Queensland Conservatorium, and the Griffith Graduate Centre, and is strategically located in the heart of Brisbane's cultural precinct, over the river from the city's, and the states, political and business centre. The Graduate Centre provides the vehicle for delivery of the MBSA, and various postgraduate professional and award studies to the centre of the city.





www.griffith.edu.au