

Fanning the winds of change: the social and economic impacts of coastal growth and tourism urbanisation

Alison Taylor

Principal Demographer

Planning Information and Forecasting Unit

Queensland Dept of Local Government, Planning and Sport

National Coastal Urbanisation Symposium

Gold Coast, 29 March 2004

PIFU 2004

Two case studies

- Sunshine Coast and Gold Coast
 - behind the glamour of a seachange destination
 - what are the social and economic impacts of the growing population?
 - are these regions being left behind?
 - what are the different impacts of tourism urbanisation?

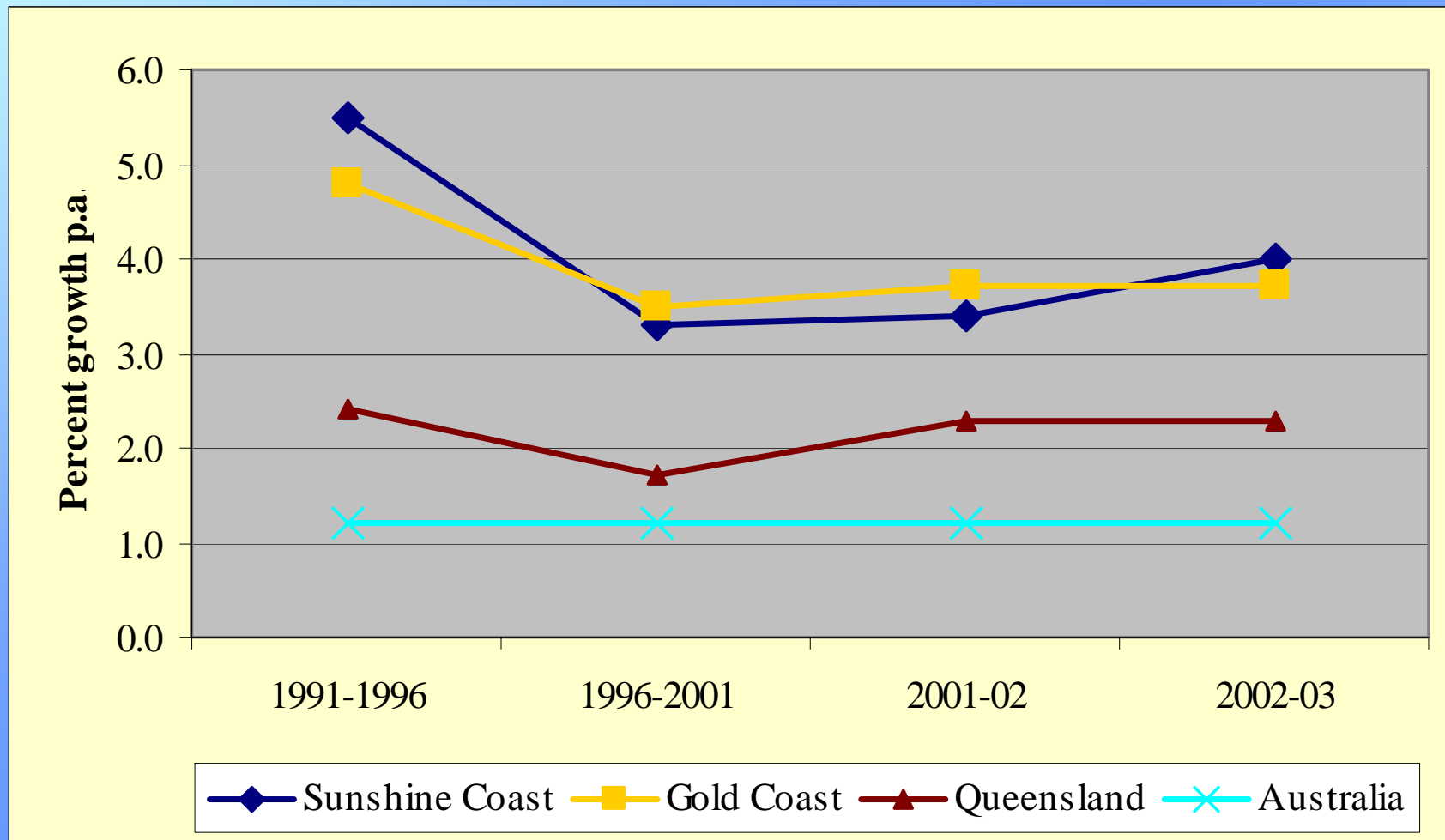
Sunshine Coast – the images



Gold Coast – the images



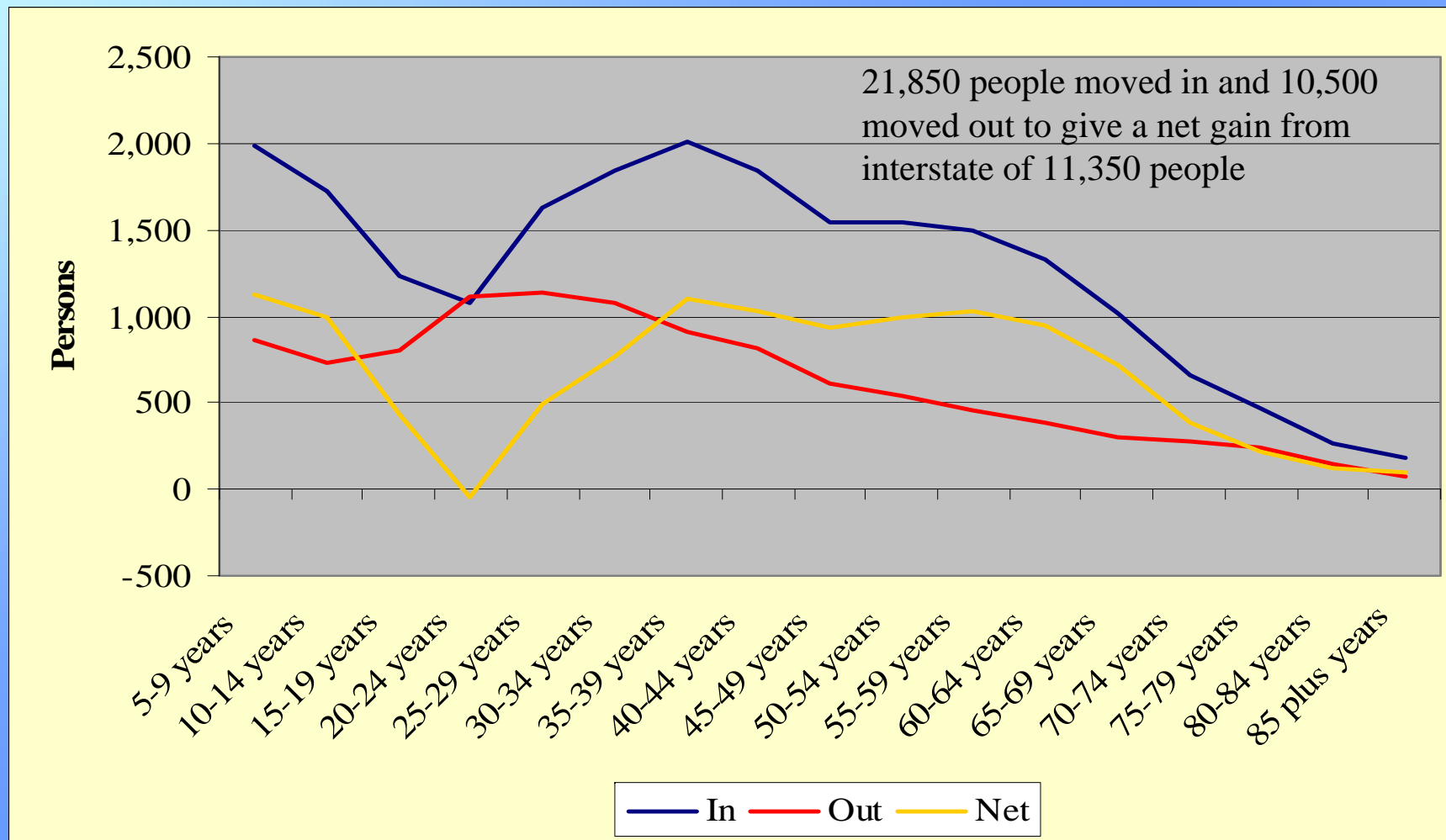
Coastal areas grow rapidly



Migration - the key driver of growth (Gold Coast City)

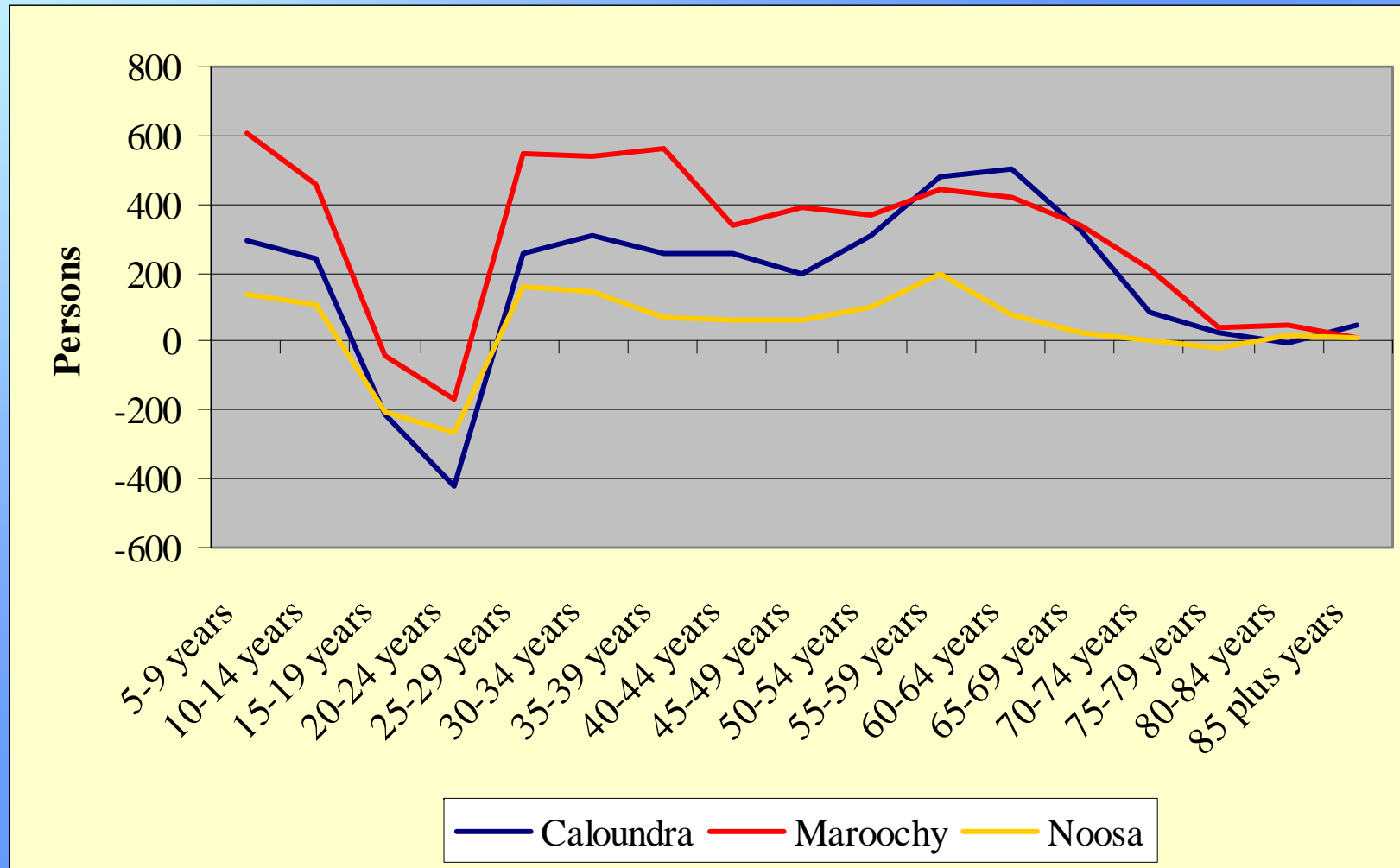
Year ending	Assumed Net Migration	Total Growth	% ANM
1994	12,874	14,693	87.6
1995	17,145	19,350	88.6
1996	11,400	13,415	85.0
1997	11,519	13,446	85.7
1998	9,588	11,480	83.5
1999	11,437	13,308	85.9
2000	12,395	14,436	85.9
2001	12,538	14,608	85.8
2002	13,725	15,655	87.7
2003	13,911	16,099	86.4
10yr Total	126,532	146,490	86.4

Strong net interstate gains (Sunshine Coast 1996-2001)

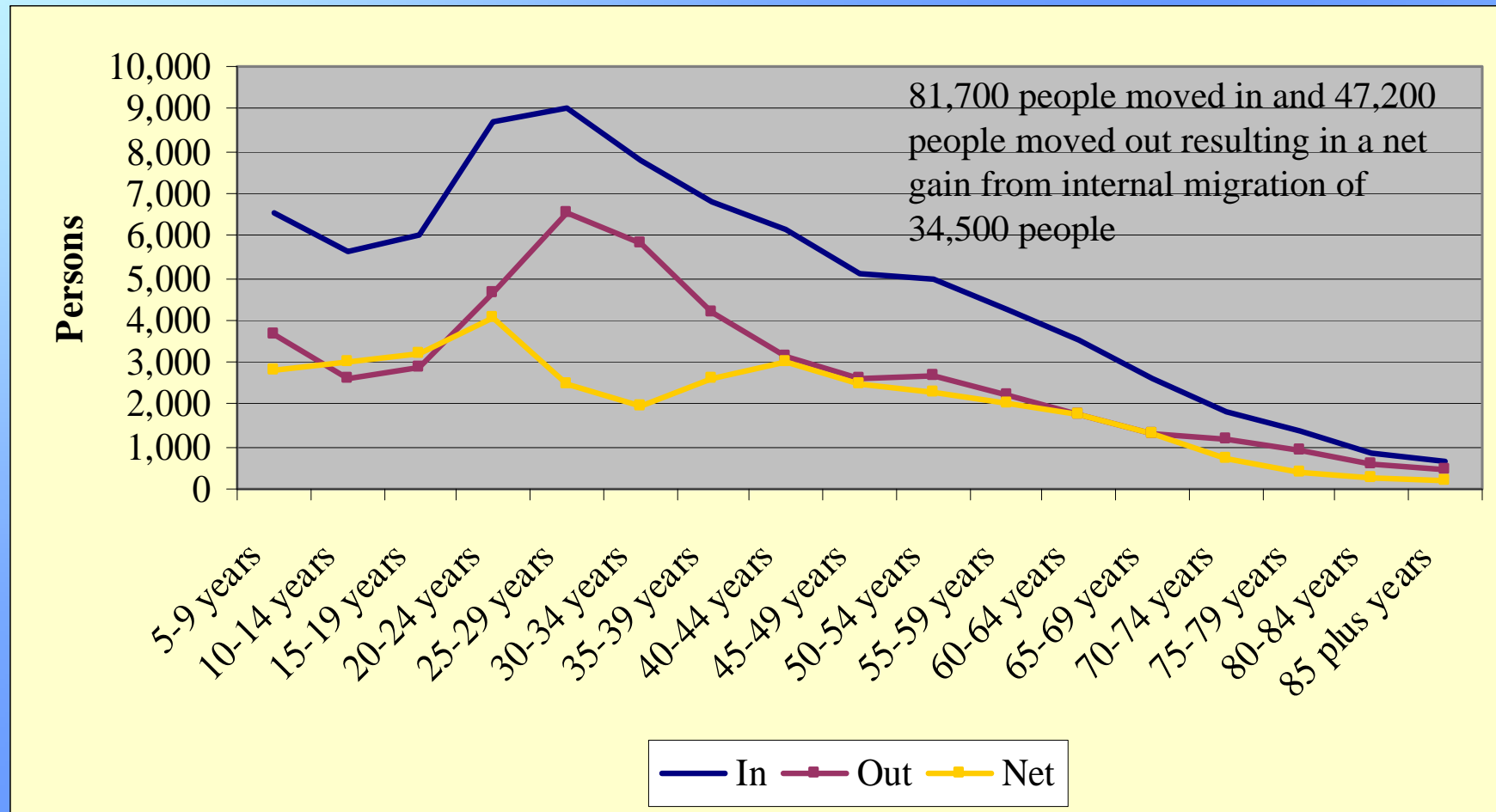


Source: ABS, 2001 Census unpublished data

Intrastate migration (Sunshine Coast LGAs 1991-96)

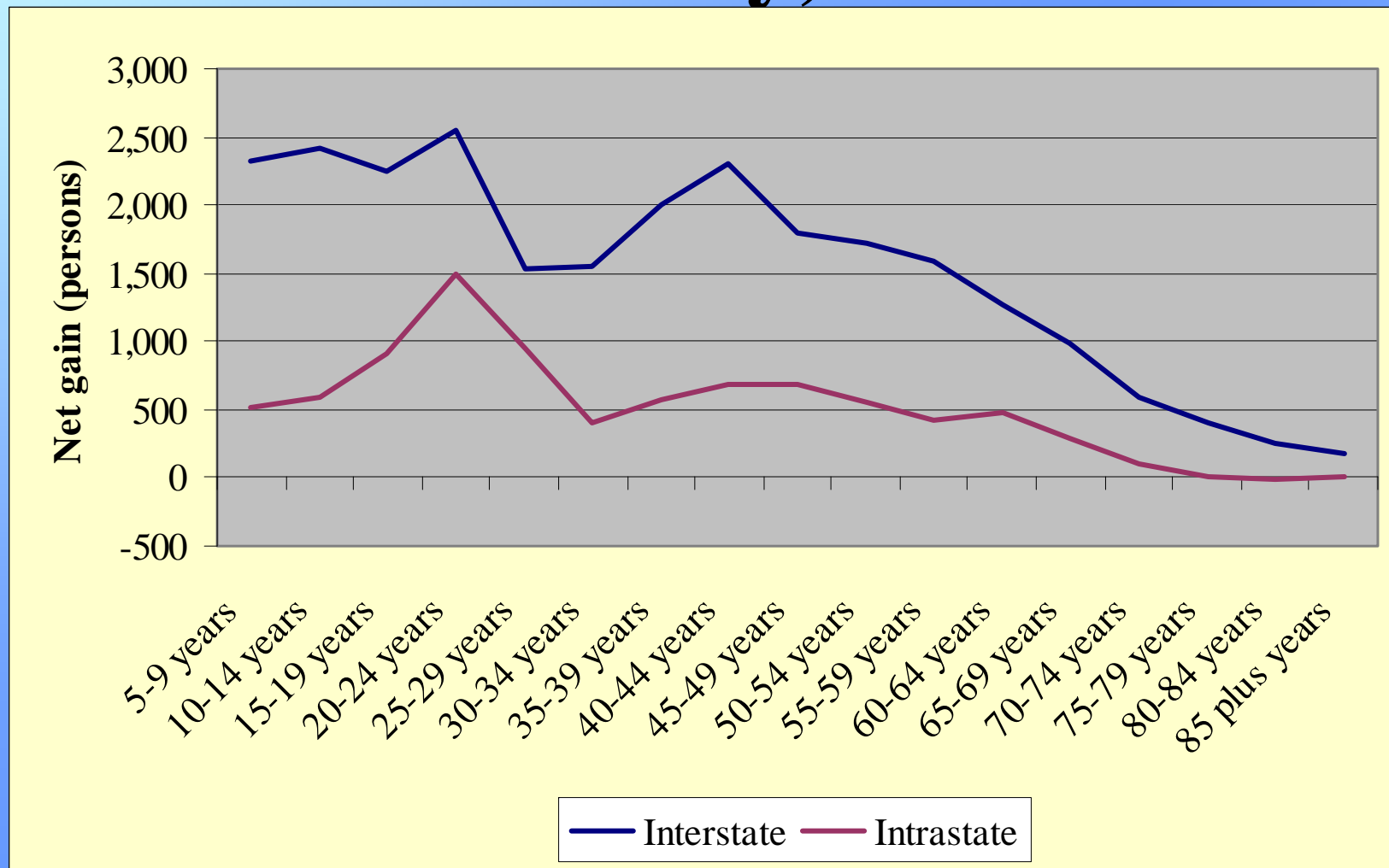


Gold Coast City, net internal migration, 1996-2001

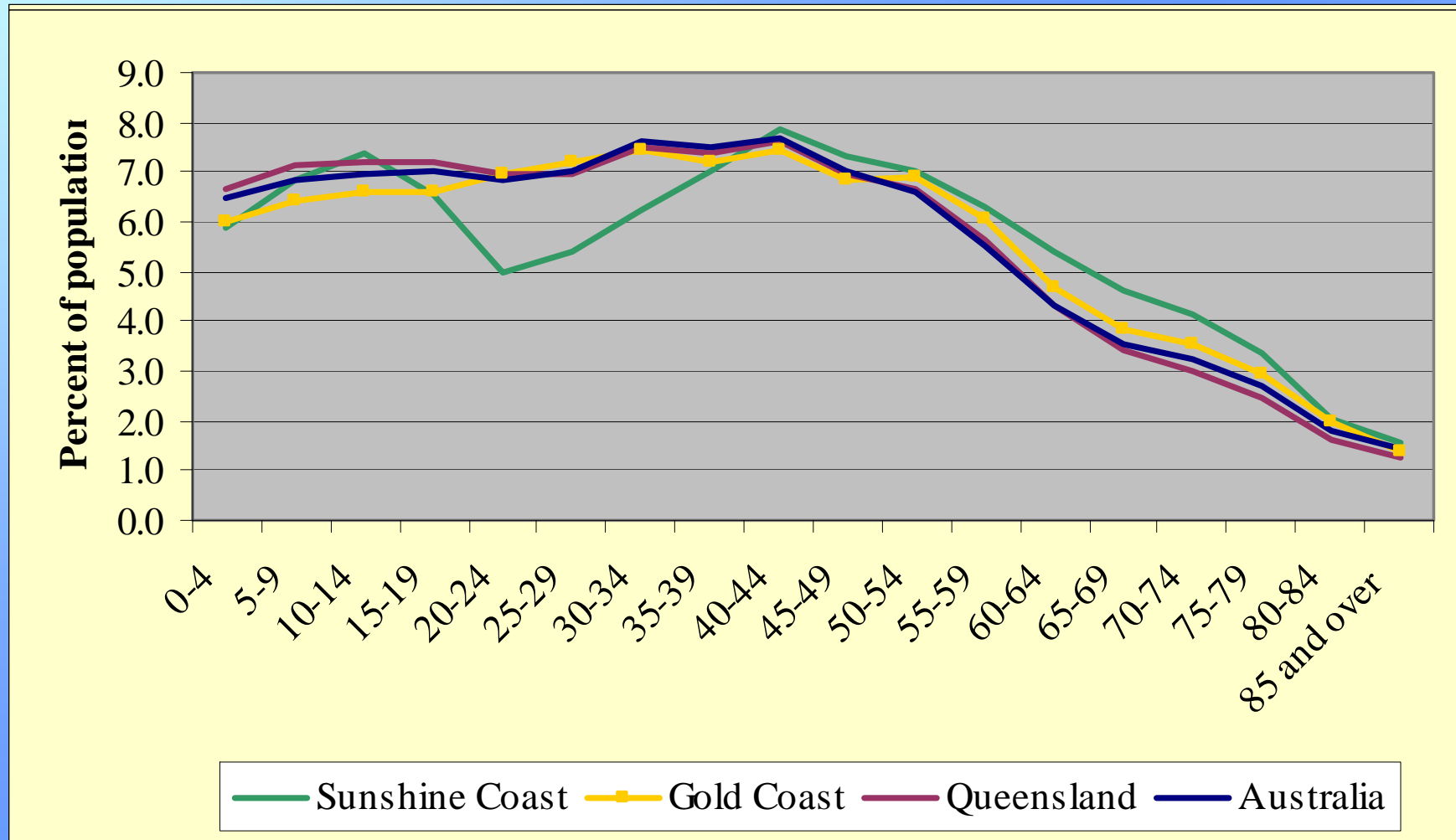


Source: ABS, 2001 Census unpublished data

Age distribution of net gain, Gold Coast City, 1996-2001



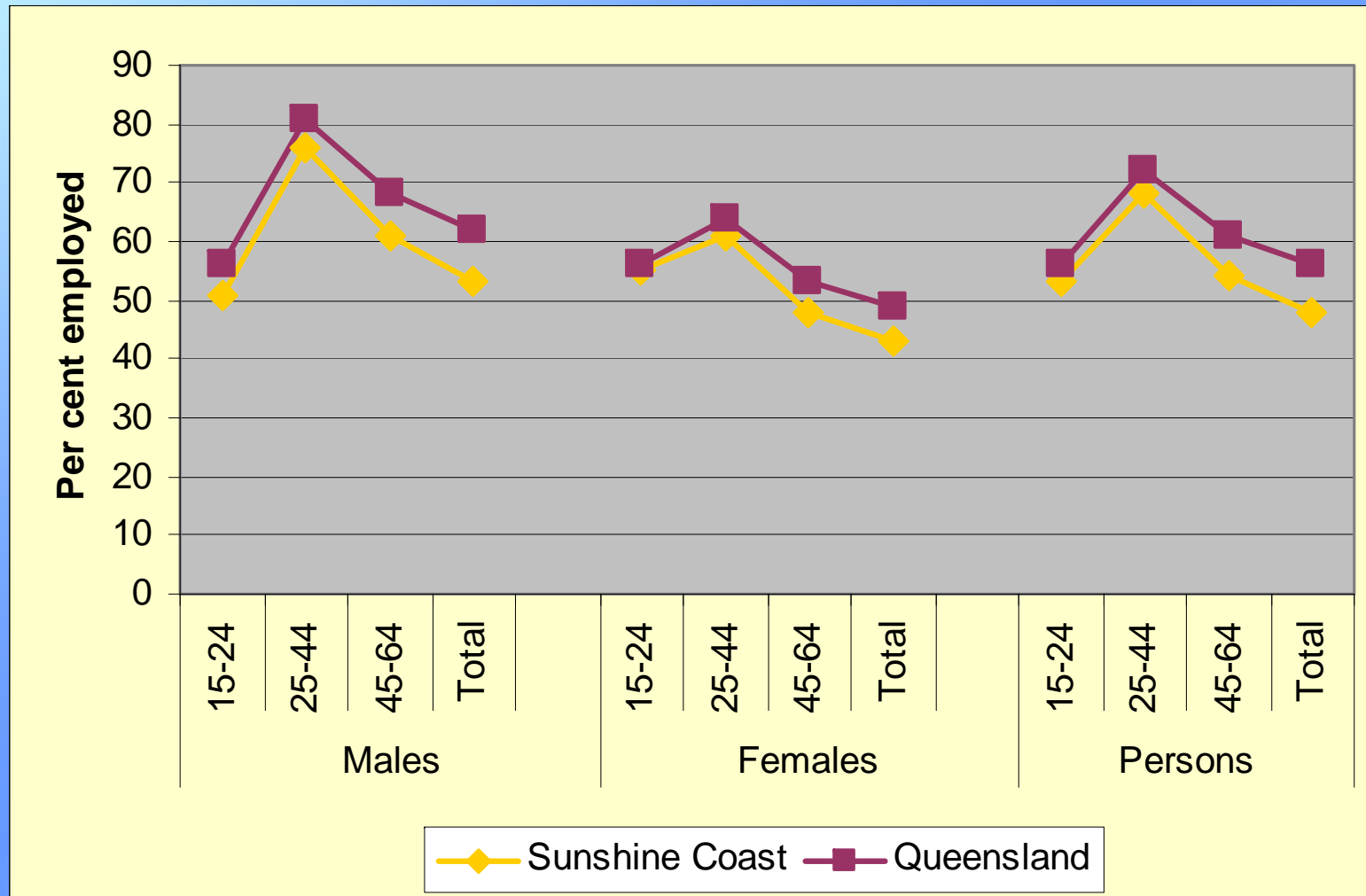
Comparison of age structure



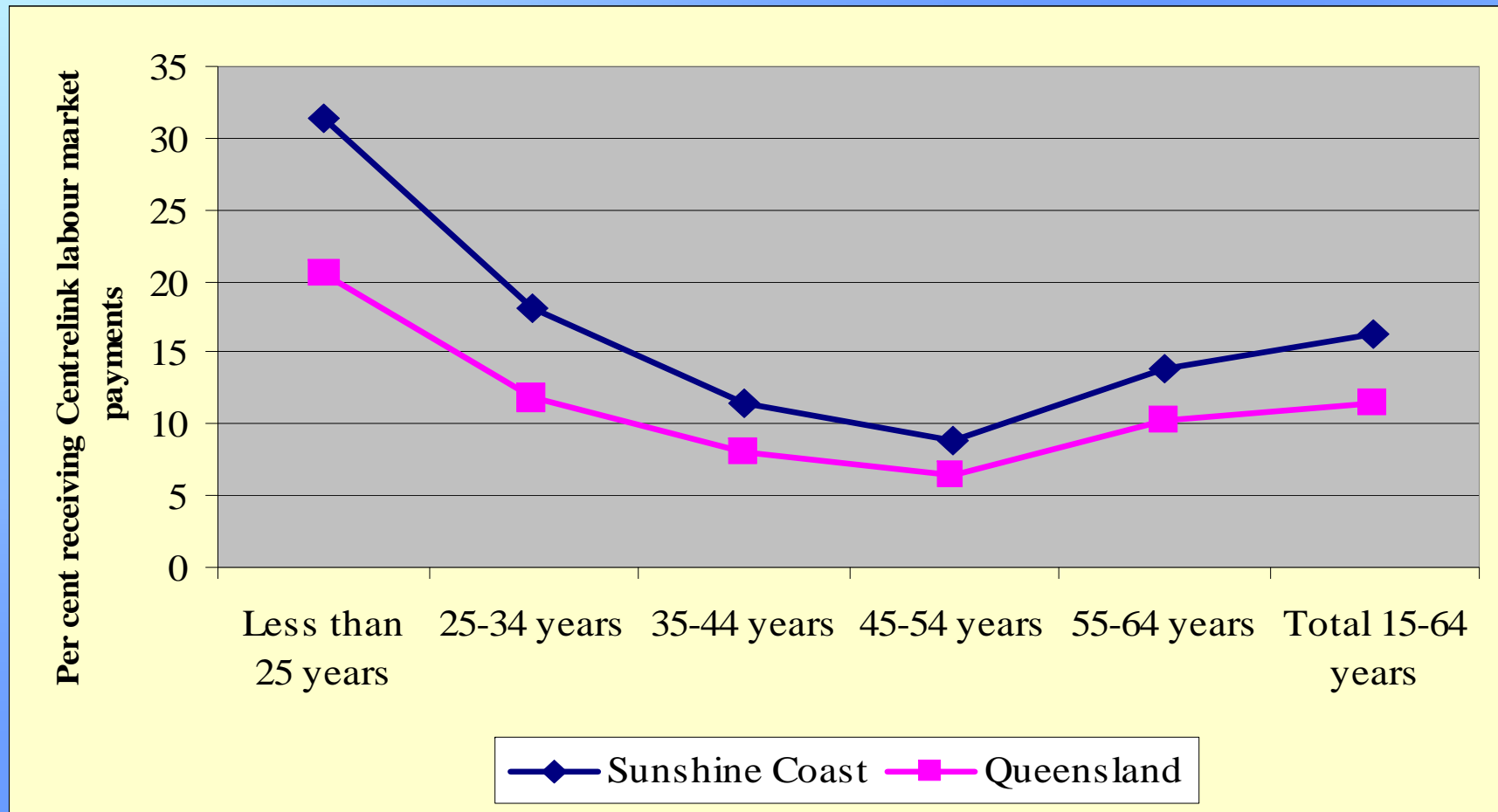
Source: ABS 2002 ERP

PIFU 2004

Coastal areas have a lower level of employment

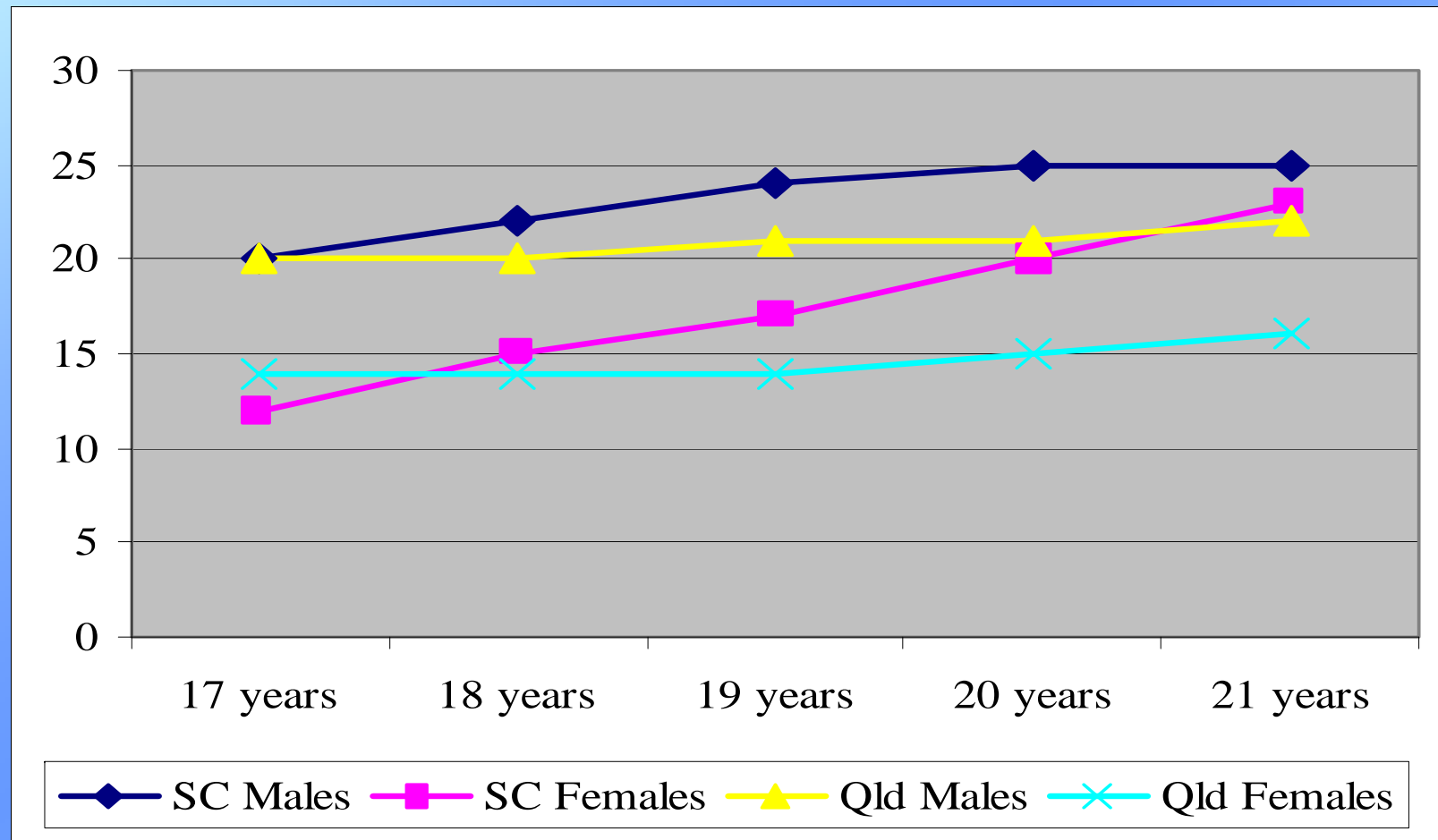


Unemployment benefits, males

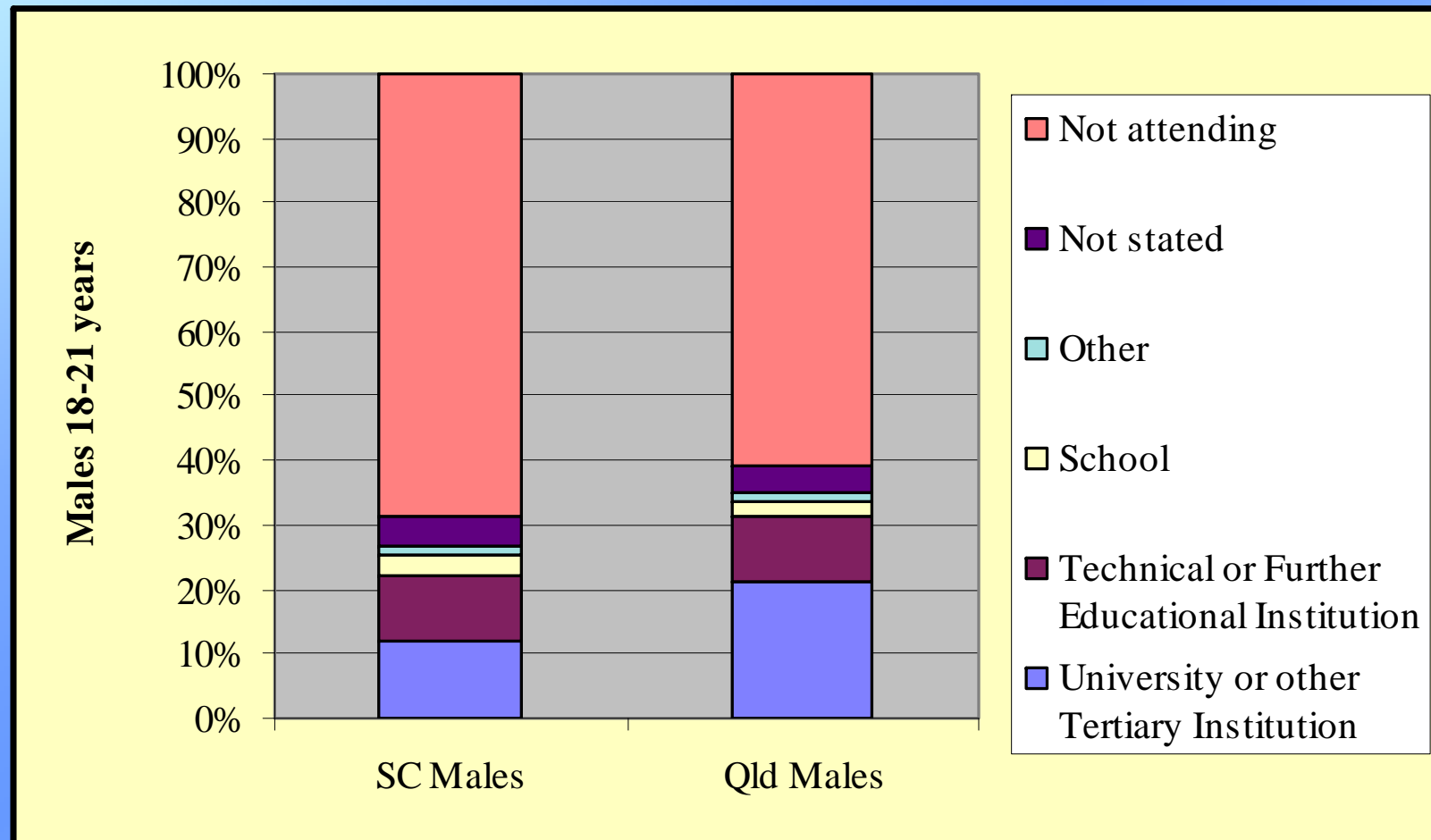


Source: Centrelink, as at Dec 2001

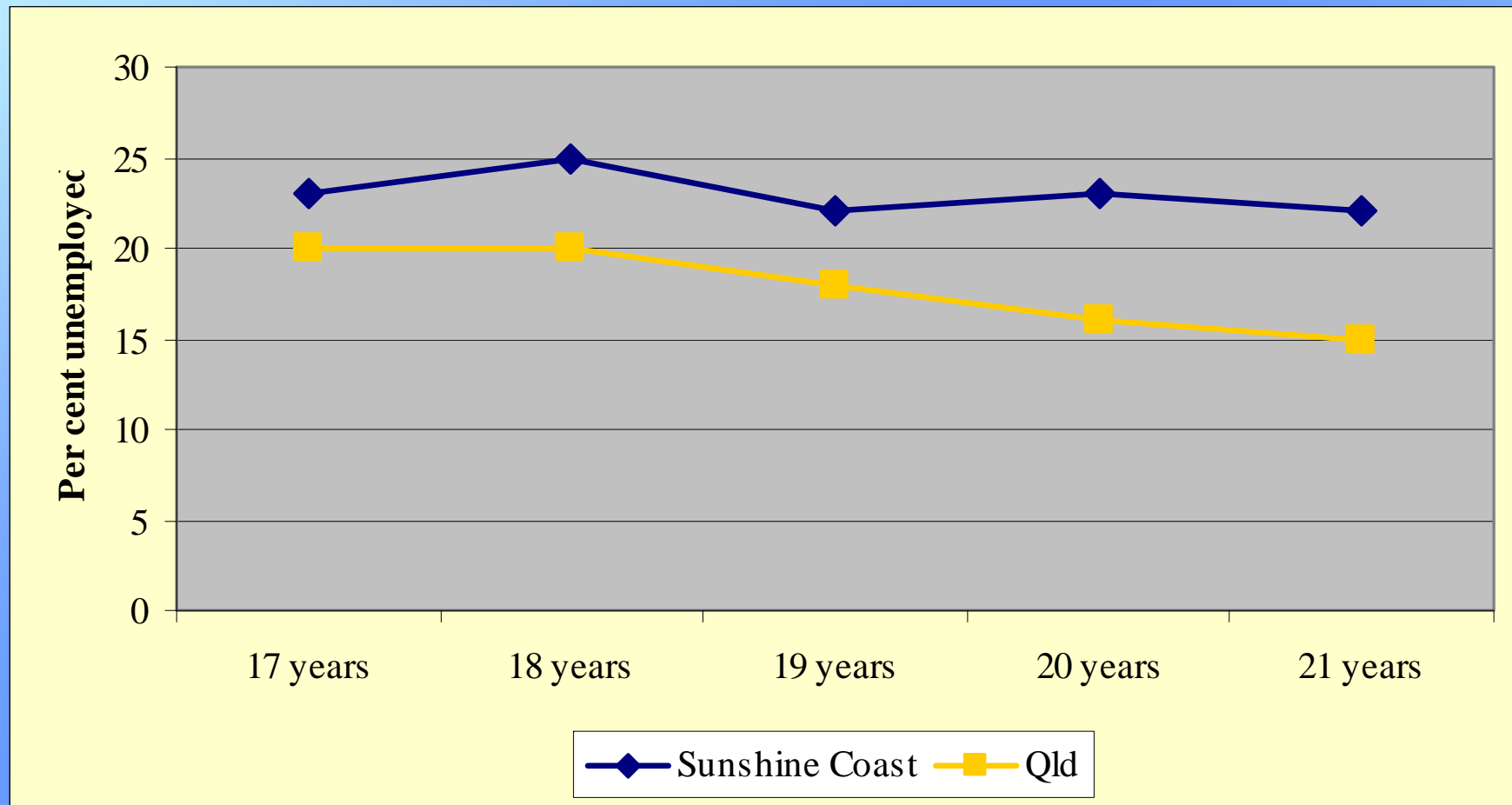
Left school before completing Year 11



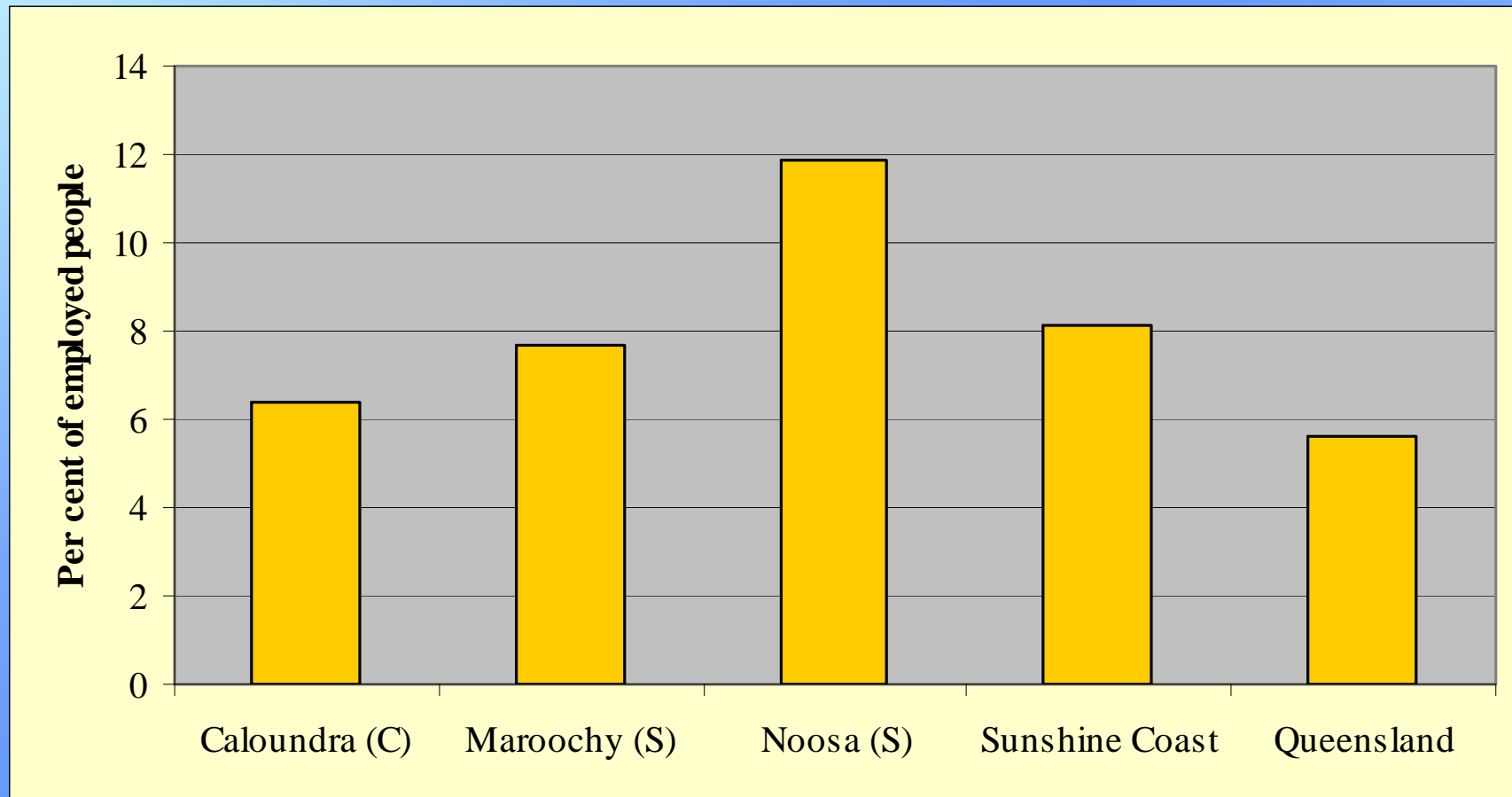
Young men's educational participation



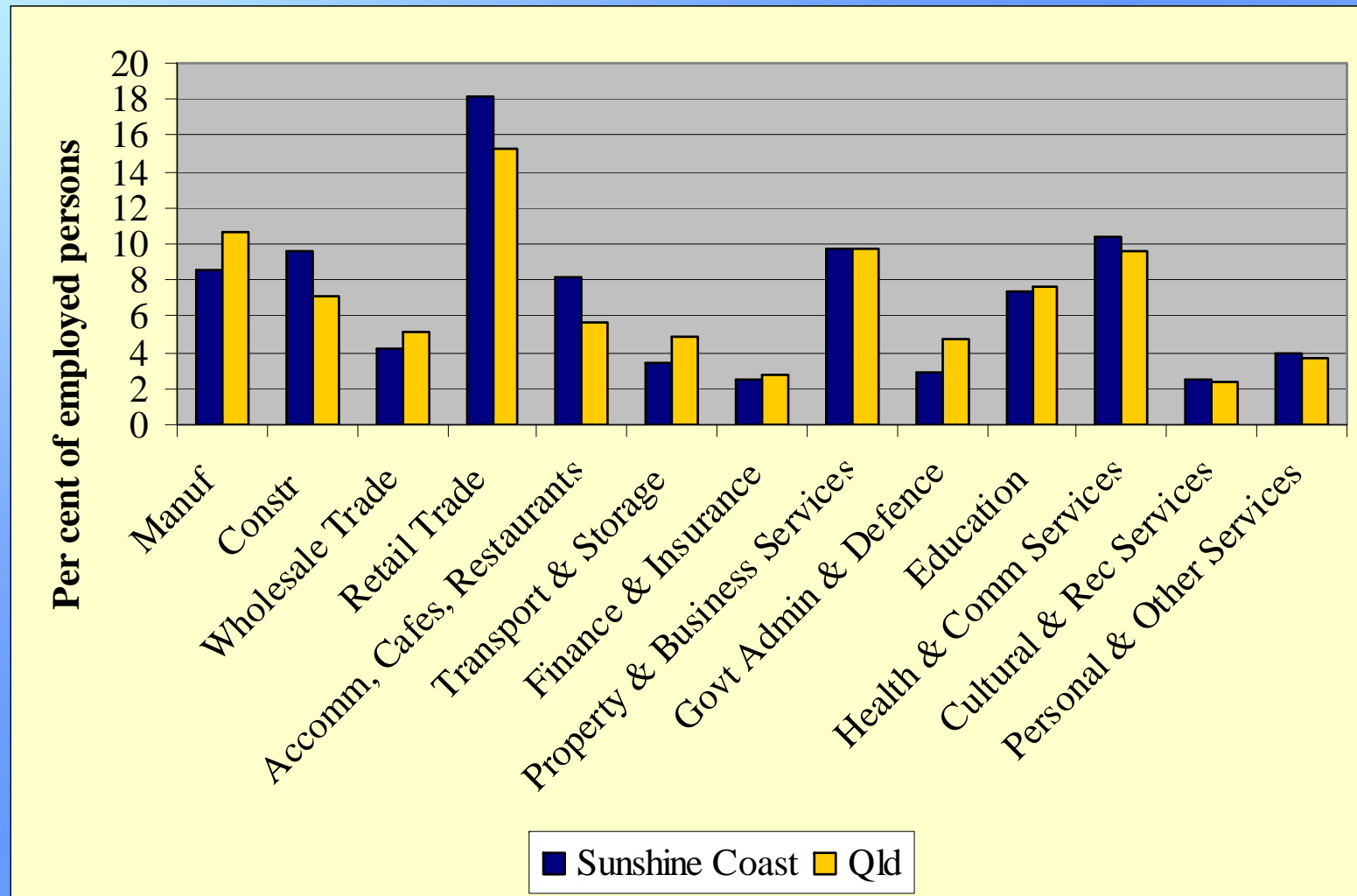
Higher unemployment for young men



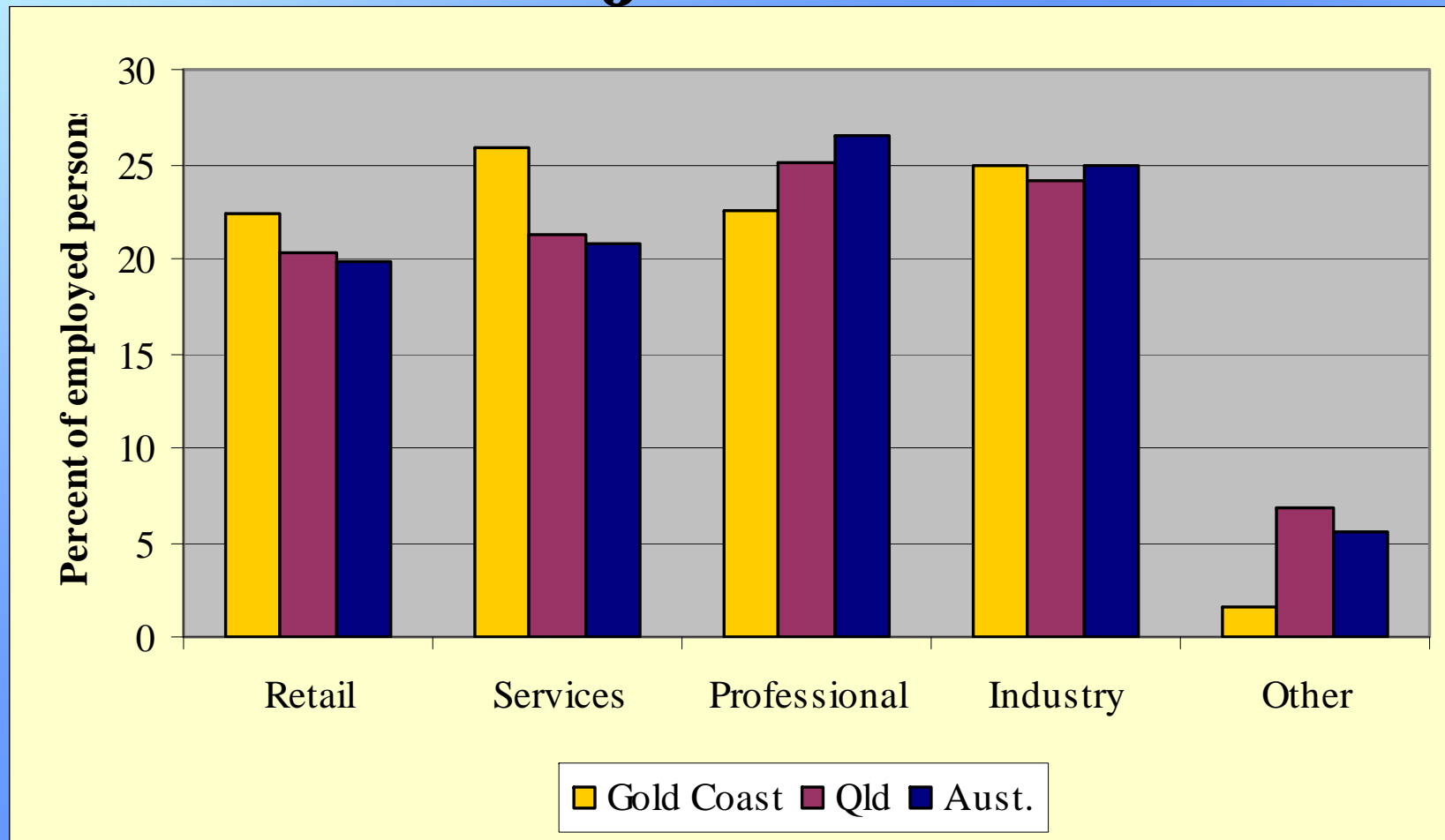
Some jobs in accommodation, cafes & restaurants



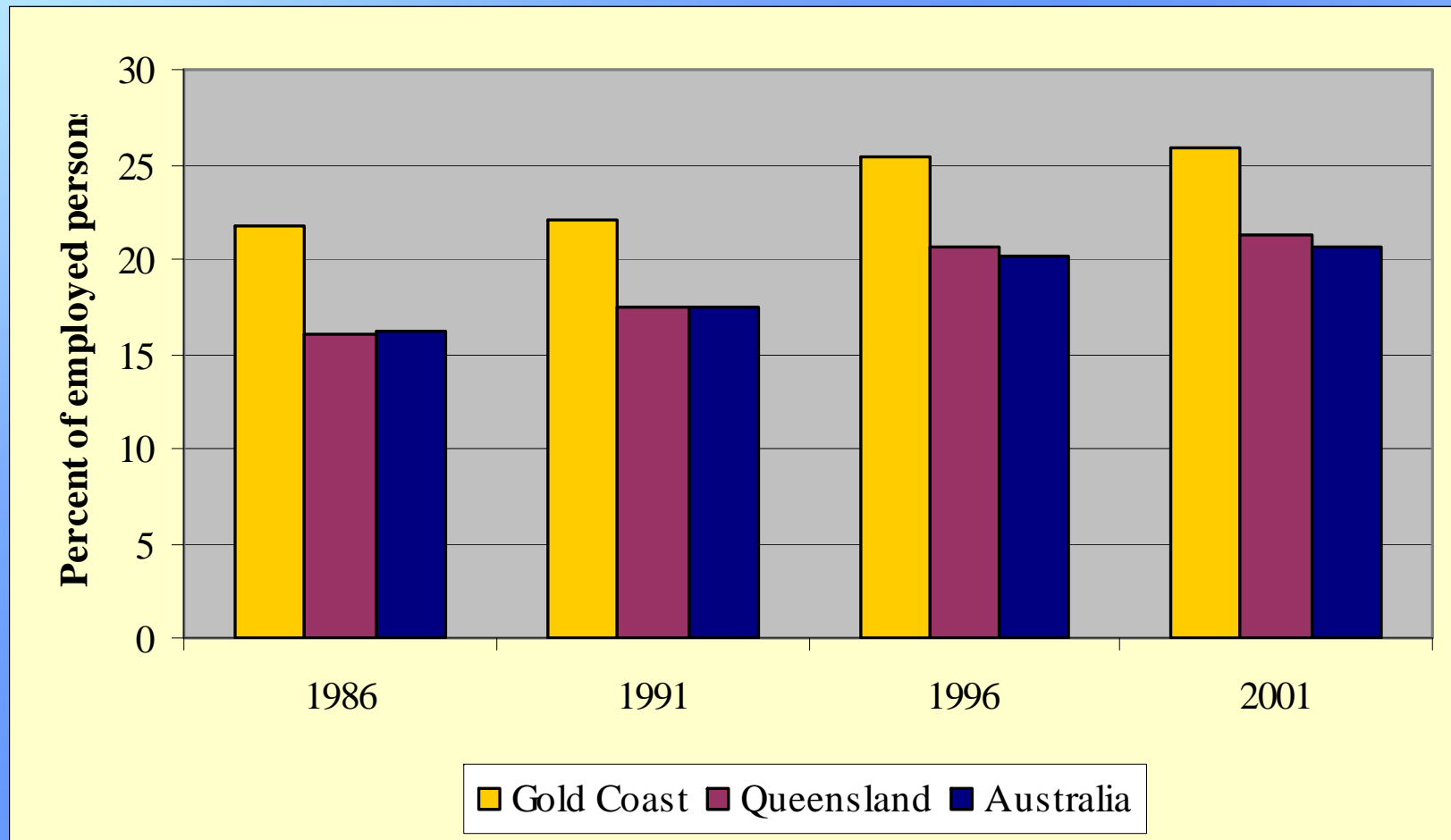
Coastal centres have a different industry structure



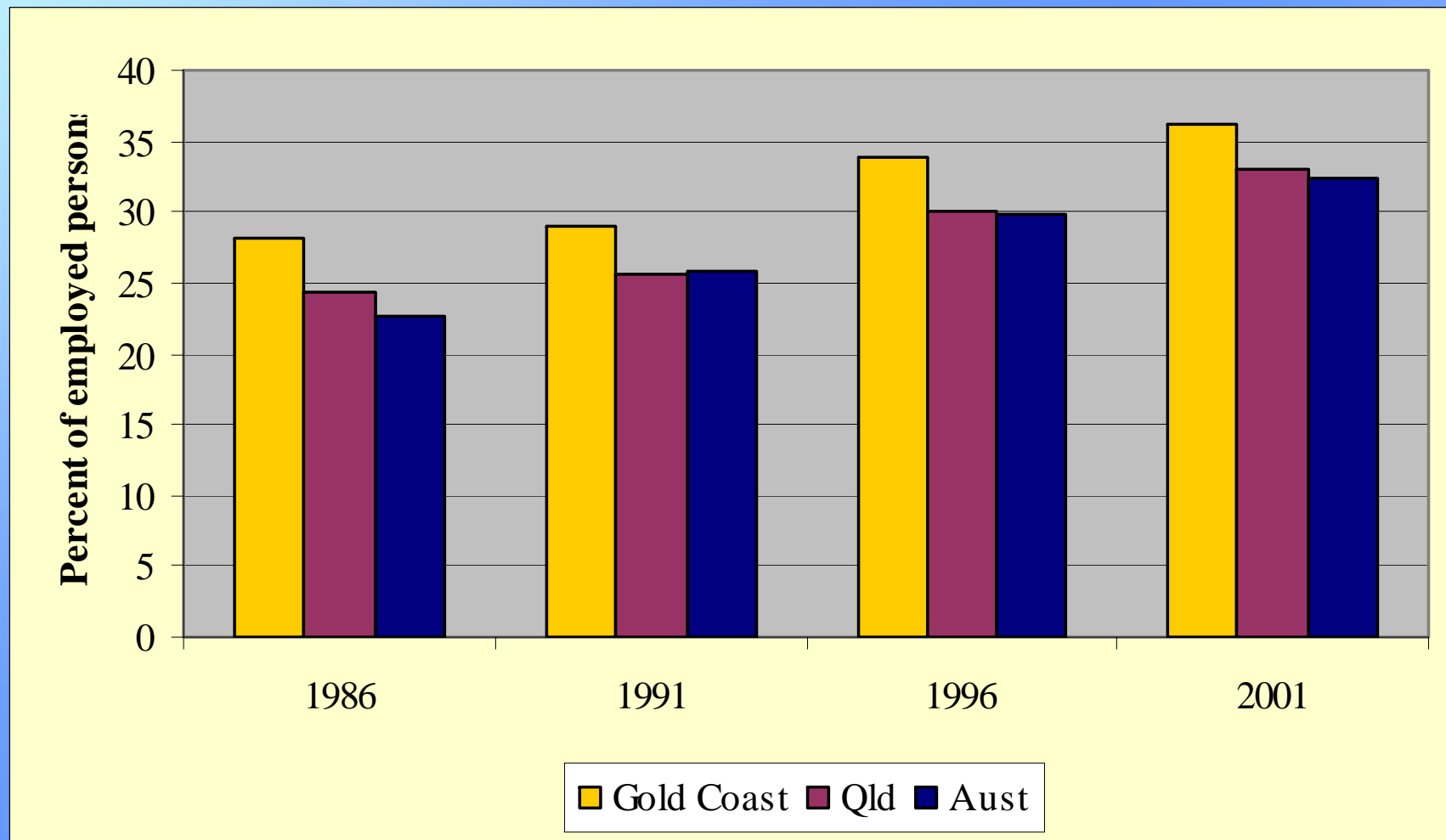
Clear differences in available jobs



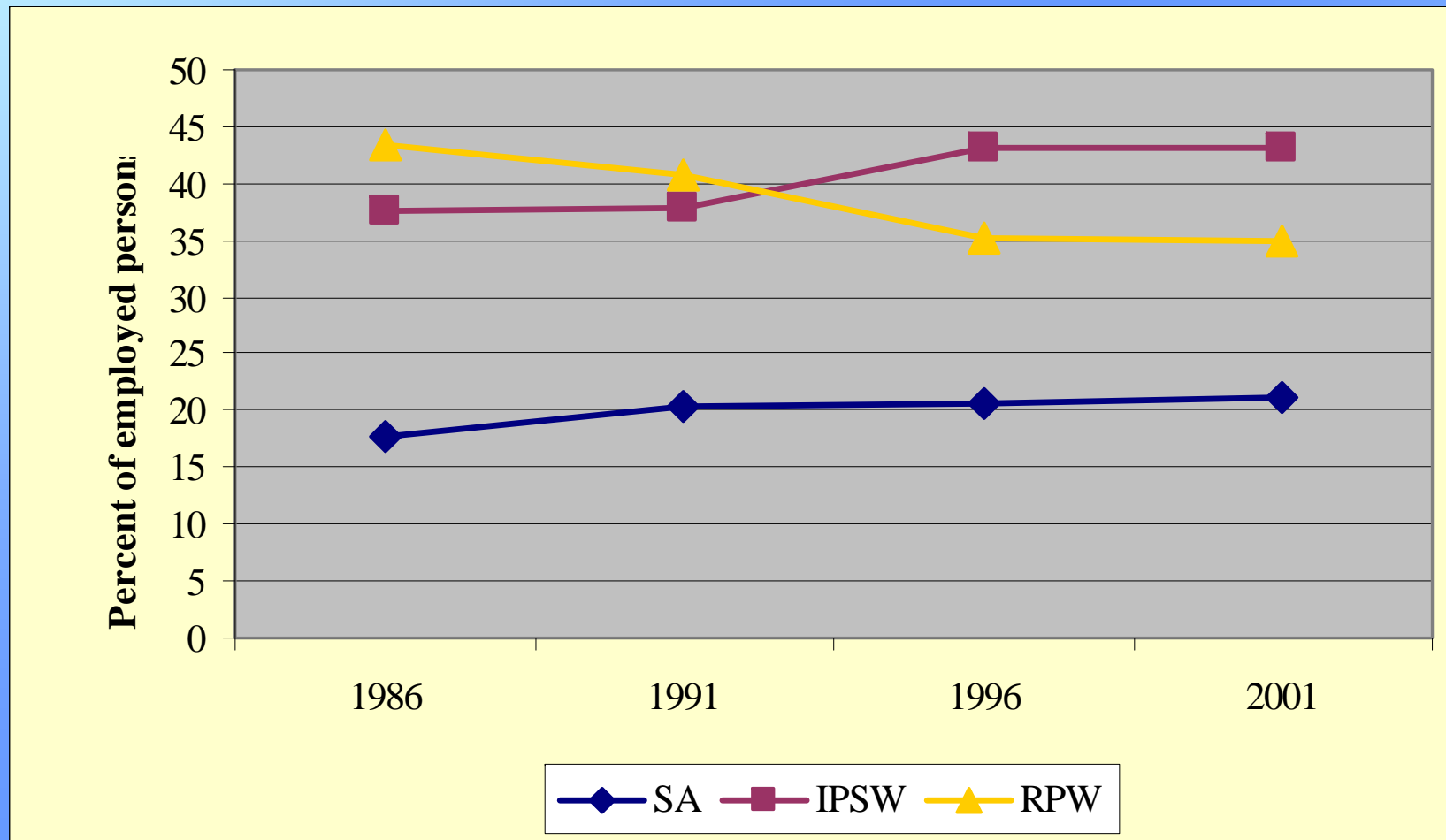
Service sector employment strong



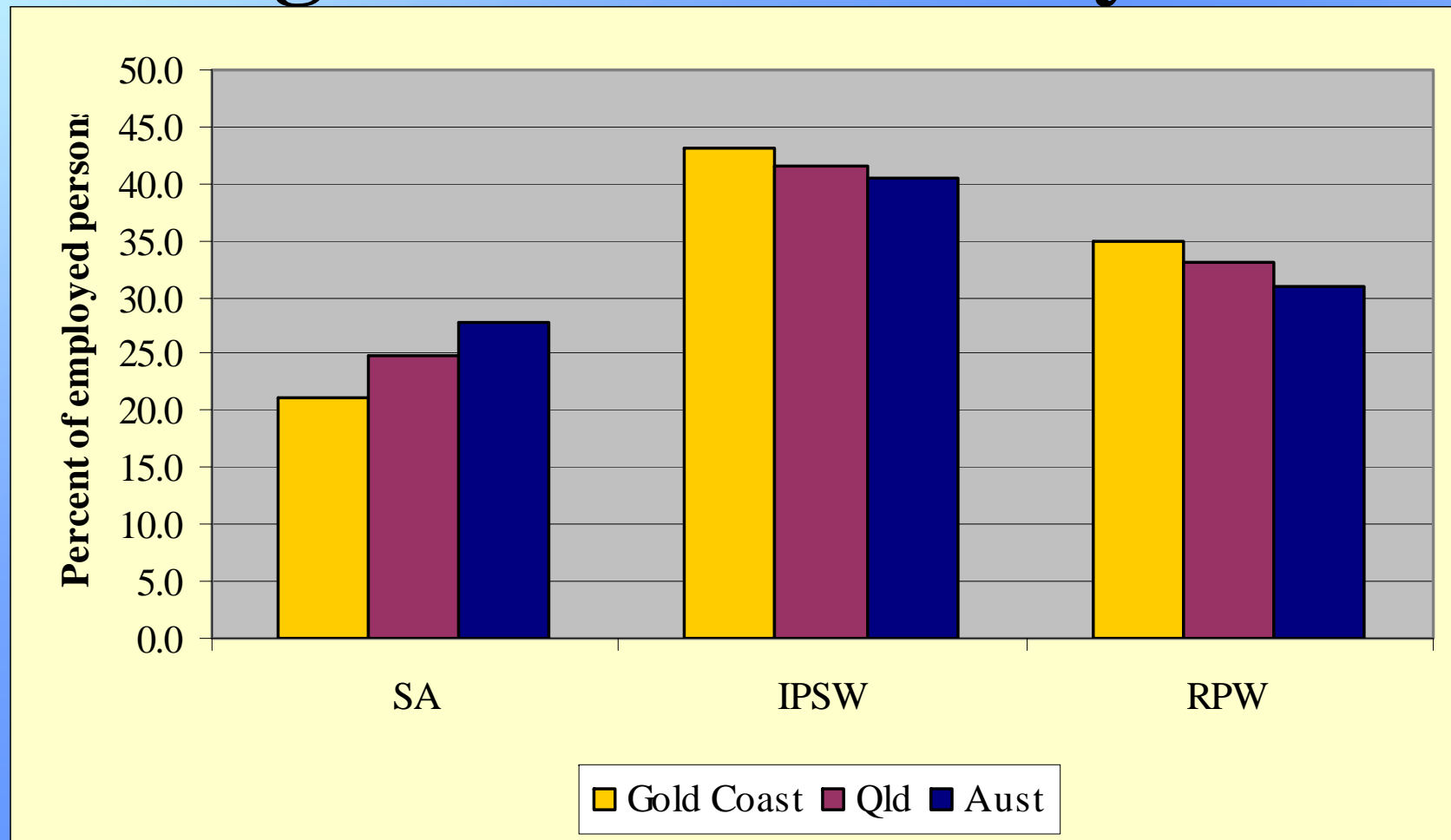
More part-time workers



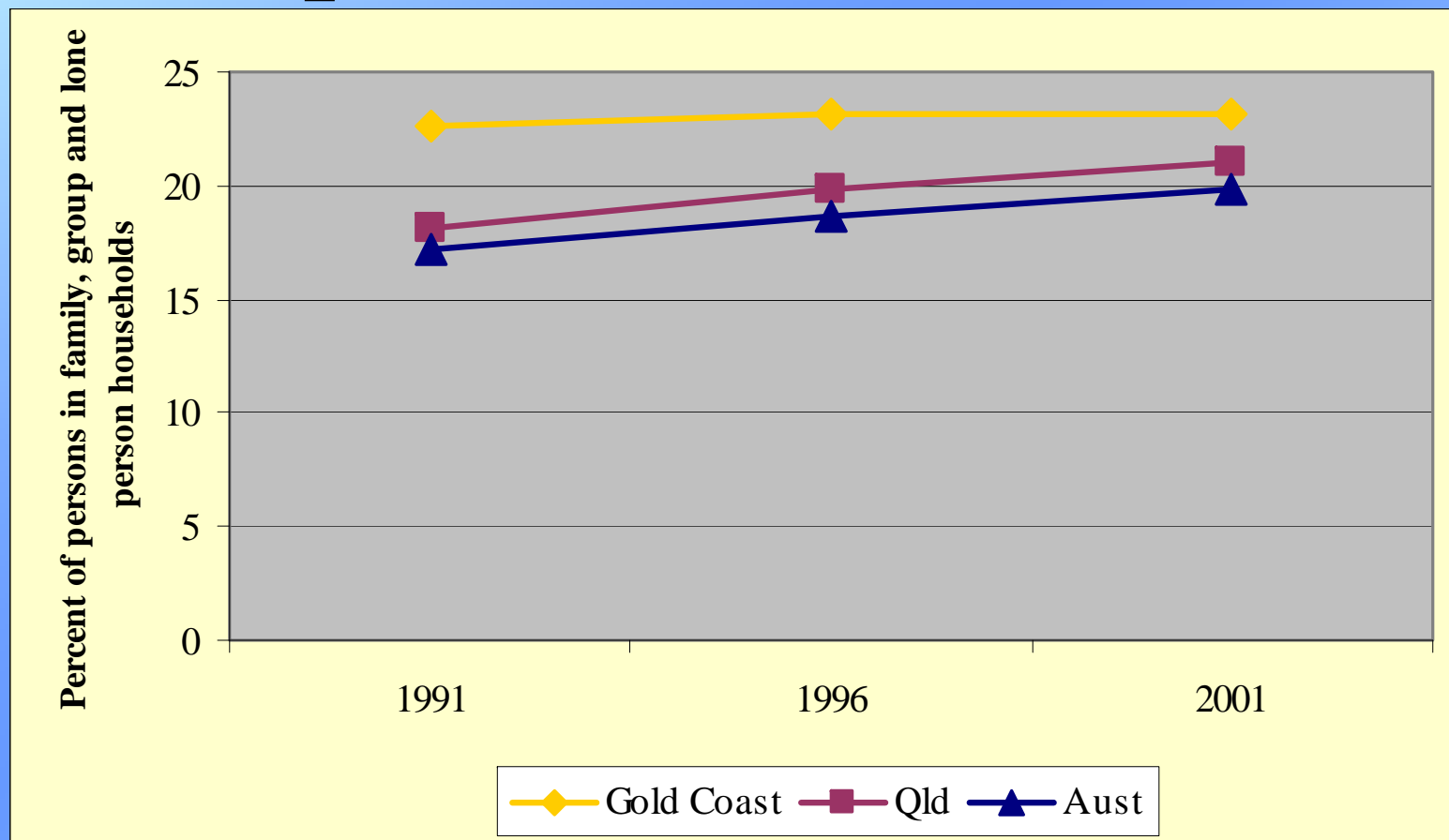
Changing occupational structure (Gold Coast)



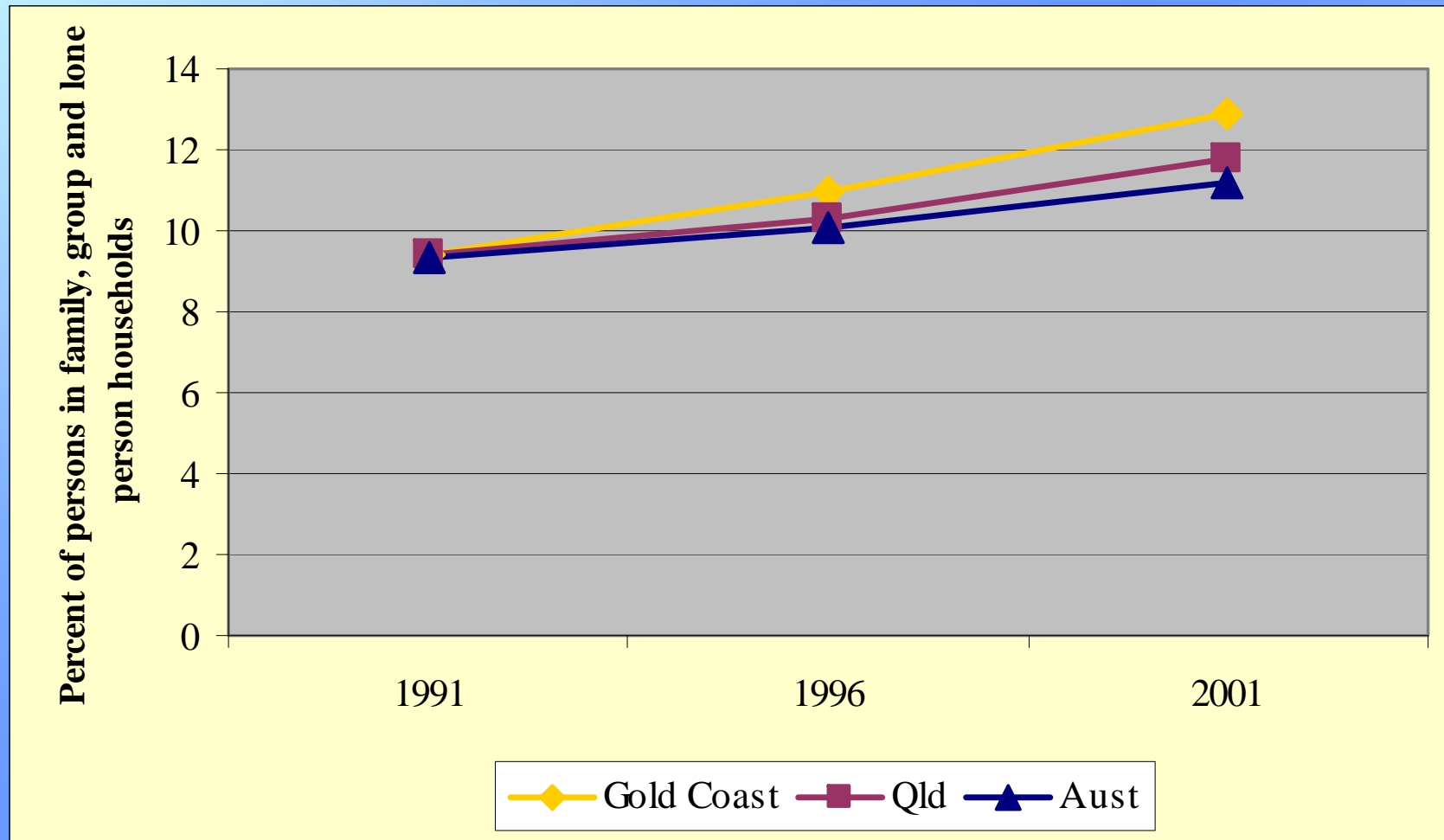
Service and routine jobs more significant than analysts



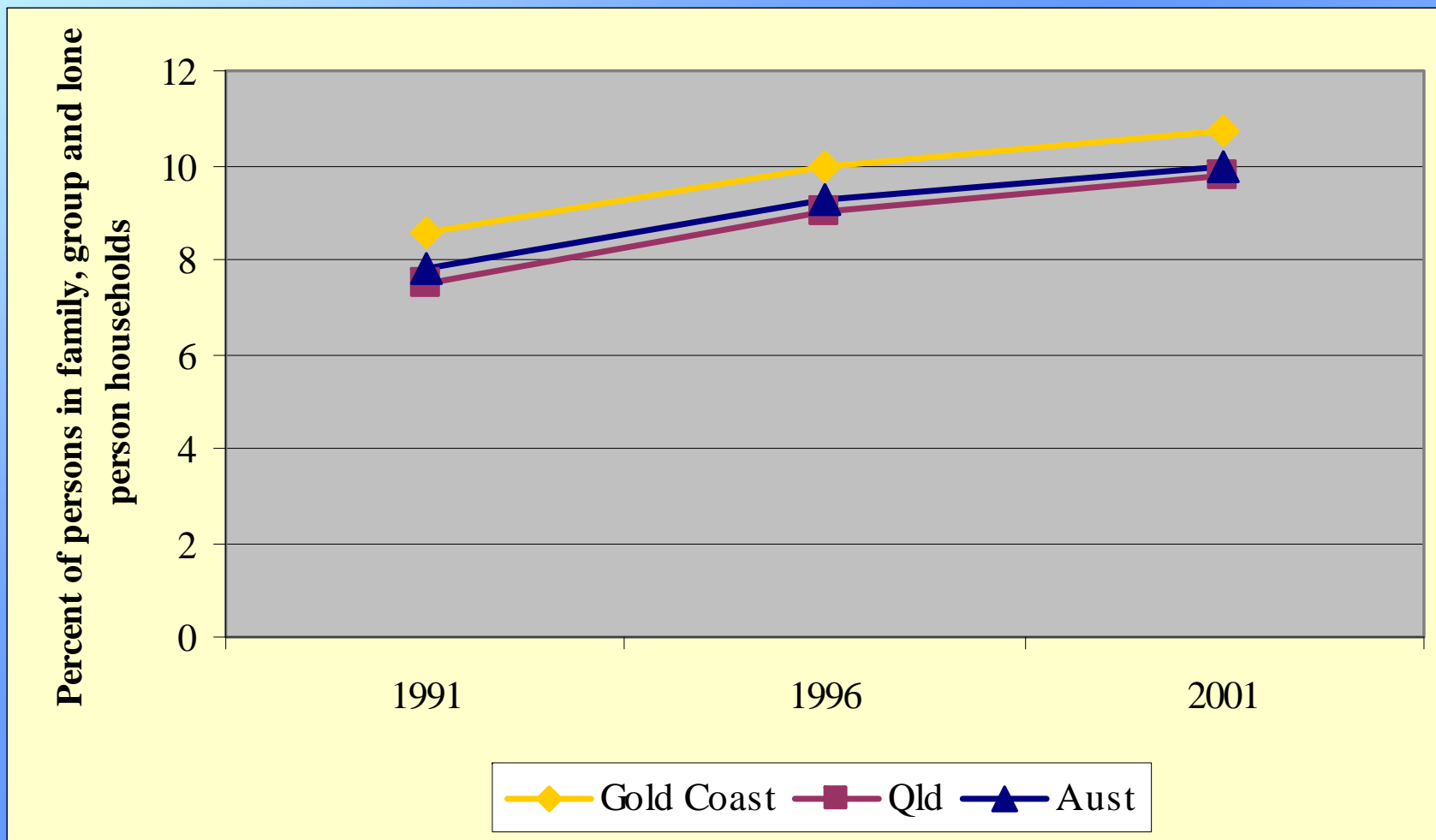
Coastal centres have a different household structure – more couples without children



More one parent families



More lone person households



Tourism urbanisation

- Spatially different
- Symbolically distinctive
- Rapid population and labour force growth
- Mass and customised consumption of pleasure
- Social distinctive resident population

Mullins, P. 1991 Tourism Urbanization

Social and economic impacts of coastal urbanisation

- Continuing growth driven by migration means lots of newcomers, loss of support structures
- Different economic structure and patterns of work
- Young people getting left behind in education and training stakes
- Rapid growth in non-traditional families
- High levels of welfare dependency

PLANNING INFORMATION AND FORECASTING UNIT

For specialist consultancy services in demographic analysis and forecasting, customised GIS applications and urban development monitoring.



FOR MORE INFORMATION, PLEASE CONTACT:

(07) 3235 4580 (Demography)

(07) 3237 1254 (GIS)

pifu@dlgp.qld.gov.au (e-mail)

www.dlgp.qld.gov.au/pifu (web-site)