

## Vice Chancellor's Report to Council

**Monday 6 October 2008**

It has been another significant two months for Griffith and the University sector. The Australian Government has released the Innovation Review which includes some good news and challenges for Universities. The Bradley Review of Higher Education decided not to release an interim report.

Council members will receive in their papers the full report of the Australian Universities Quality Agency. As I have previously advised Council the Report provides a positive and balanced analysis of the Universities performance. The challenge for the university is to deliver on our commitments in the Portfolio, further focus our activities and discontinue those activities that add to staff activity but do not deliver on core goals.

The draft strategic plan that Council will consider coupled with an enhanced approach to School and University planning should assist in delivering this outcome.

The quality of Griffith's international activities was commended by AUQA and clearly evident in Griffith winning seven of the eleven Queensland Government awards for international education (2008 Queensland Education and Training International Awards for Excellence). The awards included:

- International Student of the Year: Juan Sebastian Diaz Gasca
- International Alumnus of the Year: Dr Ly Qui Trung
- Outstanding Professional Contribution: Mr Thomas Toh
- Outstanding Work Placement Program: Griffith Business School Best Practice in International Collaboration: Centre for Environment and Population Health (Professor Cordia Chu and Dr Peter Davey)
- Outstanding Industry Support: Indigo Technologies Ltd (offering internships to international students in the Griffith Business School)
- Education and Training Award: Griffith University.

Griffith will progress as a finalist to the Australian Export Awards in December.

Our students and alumni excelled at the Olympics, bringing home 16 medals – 5 gold, 3 silver, 8 bronze. Twenty current and past students, alumni and Griffith Sports College graduates competed in 13 different events. Eleven athletes won medals, and two were multiple medal winners: swimmers Libby Trickett – 2 gold, 1 silver, 1 bronze; and Andrew Lauterstein – 1 silver, 2 bronze. Griffith students also performed extremely well in the Paralympic Games in Beijing. Swimmer and Bachelor of Business student Michael Anderson won a Silver medal in the 100m backstroke – S10 category, placed 6th in the 50m freestyle – S10, and finished 5th in his heat of the 100m freestyle – S10. Athlete Jonathan Bernard, who is completing a Bachelor of Laws/Commerce, competed in the 400m –T12 category. This was the debut games for both students.

On the alumni front the Chancellor and I hosted the third annual state parliamentary alumni dinner in the Speaker's Dining Room, Parliament House.

Parliamentary alumni that attended included Margaret Keech, Minister for Child Safety and Women, Rod Welford, Minister for Education, Training and the Arts, Judy Spence, Minister for Police and Corrective Services and Sport, Stephen Robertson, Minister for Health, Phil Reeves, Parliamentary Secretary to the Premier, Karen Struthers, Parliamentary Secretary to the Minister for Health, Vicky Darling, Member for Sandgate and Wayne Wendt Member for Ipswich West.

The Annual Dinner is an opportunity to update our parliamentary alumni on milestones Griffith has achieved to date, and to discuss how Griffith is addressing the exciting and challenging opportunities ahead. It is also an opportunity to seek valuable advice and commentary on those opportunities as well as the complexities of the Australian higher education environment.



Left to right front row: Professor Allan Cripps, Professor John Dewar, Chancellor Leneen Forde, Ms Vicky Darling, Mr Wayne Wendt and Professor Ned Pankhurst  
Left to right back row: Ms Patricia Wrathall, Ministers Stephen Robertson and Margaret Keech, Mr Grant Musgrove, Minister Rod Welford, Professor Ian O'Connor, Ministers Judy Spence and Phil Reeves and Deputy Chancellor Henry Smerdon

I also had the opportunity of explaining Griffith's particular strength and needs to the Deputy Prime Minister, The Honourable Julie Gillard MP, in mid August, when she visited the Nathan campus. She announced that Griffith had received \$16.2 million from the Australian Government's Better Universities Renewal Funding to help update its infrastructure.

Sadly it was not all good news over the period. It was with much sadness that the University learnt of the sudden passing of the Honourable John Macrossan at age 78 on 5 August 2008. He served as Chancellor of Griffith University over a 12 year period. The successful development of the University in the 1990s owes much to the contributions, commitment and leadership of the Honourable John Macrossan during this period.

## Research

### *Areas of Strategic Investment (ASIs)*

Since my last report to Council I offer the following information on the eight areas for strategic investment by way of an update:

- *Criminology with a focus on Prevention*  
The proposal has been sent to two top international scholars for assessment and these reports have now been received. Both are very positive about the proposal and have provided some very useful comments that will be incorporated in plans for development of the area.
- *Water Science with a focus on Freshwater, estuarine and urban water research*  
The proposal has been sent to two top water scientists and we expect reports back by mid October.
- *Music, the Arts and the Asia Pacific Region*  
The proposal has now been received by the Deputy Vice Chancellor (Research) and letters for three top external assessors are currently being prepared with comments sought by end of October.
- *Climate Change Adaptation*  
The proposal has been sent to two top international scholars and reports expected by mid October.

The following proposals are currently being finalised and expect to be submitted by the end of September

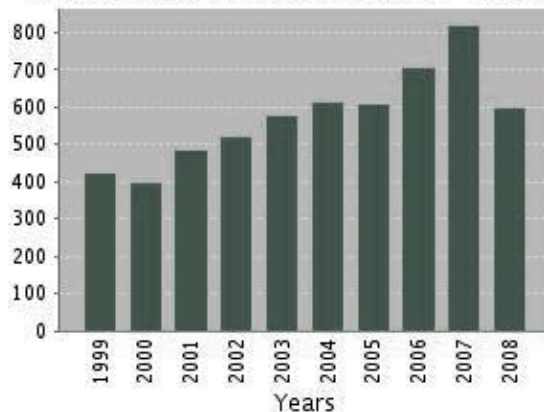
- *Drug Discovery with a focus on infectious diseases*
- *Health Research with a focus on innovations in health care*

- *Tourism with a focus on sustainable tourism research*
- *Asian Politics, Trade and Development*

#### *Publication Activity in 2008*

Griffith is on track to post another year of strong growth in publications performance for papers indexed by ThomsonReuters Web of Knowledge which is a reliable indicator of actual performance. The graph below shows that as at 19th September, Griffith researchers have produced 599 indexed papers, only 10 fewer than the full year figure for 2005. Final 2008 figures for ThomsonReuters will not be known until March 2009 however the solid accumulation to date suggests that Griffith will exceed its 2007 total (818 papers) by a healthy margin.

**Published Items in Each Year**



Griffith Univ. ThomsonReuters Papers (1999-2008)

#### *Excellence in Research for Australia (ERA)*

The Australian Research Council (ARC) has recently formed an Indicators Development Group (IDG) to consider, test and recommend appropriate discipline-specific indicators to be used in ERA, including metrics and other proxies of quality and activity. Griffith has one staff member on the 12 person committee – Mr Tony Sheil from the Office for Research. Two sub-Committees currently report to the IDG, a Creative Arts sub-Committee of which Professor Huib Schippers from the Queensland Conservatorium is a member, and a Humanities sub-Committee.

The IDG has asked the ARC to invite institutions to provide research publication data to assist with testing and development of possible indicators for ERA. A key focus of the testing in this case will be the coverage of research publications by various citation data suppliers.

Between now and the end of the year, Griffith will be taking part in two trial exercises run by the ARC to refine the approach to ERA. No evaluation of research quality will be undertaken and data will be treated confidentially.

The ARC has invited universities to take part in a short pilot submission exercise on ERA data collection and transfer during October and November. This pilot exercise is designed to test the ARC's technical systems for receiving and processing ERA data, as well as highlighting any problems institutions might experience in collecting and uploading the data.

#### *Significant new project grants*

Professor Lyn Griffiths has been awarded \$341,543 through the International Science Linkages program to carry out a project titled *An international strategy to identify the genes involved in migraine*. The project, which will involve working with partners in the UK and New Zealand, is aimed at discovering new genes involved in migraine. By identifying important links between genomic susceptibility and gene expression better diagnostics and therapeutics can be developed to identify and treat the condition.

Professor Rod Drew, of the Centre for Forestry and Horticultural Research, has been awarded \$99,200 by Horticulture Australia for a project propagating and evaluating papaya genotypes for commercial evaluation.

The Healthy Waterways Partnership has awarded Dr Michele Burford of the Australian Rivers Institute a \$70,000 grant to develop algal bloom hazard development assessment tools and management guidelines.

Associate Professor Heather Chapman and Dr Frederic Leusch, both of the Smart Water Research Facility, have been awarded a three year grant totalling \$353,000 by the National Water Commission's Water Quality Research Australian Program to develop an "Ecotoxicity Toolbox" to evaluate water quality for recycling.

Professor Claire Wyatt-Smith and Associate Professor Greer Johnson from the Faculty of Education have been awarded a major consultancy with the Queensland Department of Education, Training and the Arts for a project 'Evaluation of the Impact of the Literacy - the Key to Learning, Framework for Action, 2006-8'

#### *Australian Laureate Fellowships*

On the 3 September 2008, Senator Kim Carr announced the Australian Laureate Fellowships for funding commencing in 2009. The Australian Laureate Fellowships will replace the Federation Fellowships scheme. It is expected that the scheme will open in mid October.

\$239 million over five years has been allocated to the program, which will be run by the ARC alongside the *Future Fellowships* scheme for mid-career researchers.

Up to 15 fellowships will be awarded every year. Each fellowship will be worth around \$3 million over five years and will allow the Laureate Fellow to work with, and mentor, up to four postdoctoral and postgraduate researchers.

#### *VenturousAustralia*

The Review of the National Innovation System has now been completed with the report, *venturousaustralia*, officially released on 9th September 2008. The report is a positive one from the perspective of the university sector and publicly funded research agencies. Most of the 72 recommendations focus on the development of human capital and innovation in business, industry, and government however an entire section is devoted to national research. There are a number of recommendations important to universities including full funding for research, changes to tax incentives for R&D and the reinstatement of the COMET scheme. Some of the recommendations about funding of research mechanisms are of concern to the University and we will be making a submission to Government on these matters.

## **Learning**

#### *Australian Learning and Teaching Council (ALTC) Citations*

The Citations for Outstanding Contributions to Student Learning are one of the programs that form the Australian Awards for University Teaching which are hosted by the Australian Learning and Teaching Council (formerly Carrick Institute).

The Citations recognise and reward the diverse contributions that individuals and teams make to the quality of student learning. Citations are awarded to academic, general and sessional staff and institutional associates who have made significant contributions to student learning in a specific area of responsibility over a sustained period. This year we are proud to announce that seven Griffith staff have received Citations. These awards join a long tradition of acknowledgement for Griffith's innovative and engaging teachers. The following award recipients are listed in alphabetical order.

Dr Debra Bath, School of Psychology

*For enhancing students' learning during their first-year through the creation of a safe, engaging and inspiring learning environment where a large class feels small.*

Mr Barry Bell, Department of Tourism, Leisure, Hotel and Sport Management

*For a career commitment and leadership in the development of work integrated learning (WIL) in tertiary education.*

Dr Glenn Finger, School of Education and Professional Studies

*For distinctive and sustained leadership in the design and implementation of innovative teaching to enable teachers to transform learning with information and communication technologies.*

Mr Brett Freudenberg, Department of Accounting, Finance and Economics  
*For empowering tax law students for lifelong learning through enthusiasm, contextualisation and information literacy.*

The Griffith Industry Mentoring Program, Careers and Employment Service, Student Services (Ms Dina Fyffe, Ms Tiana Fenton, Mr Tony Lyons, Ms Delys Haskett and Ms Jenny Prakash)  
*For a program sustained over 13 years and widely recognised for its contribution to student learning, career development and University-industry partnership.*

Associate Professor Alf Lizzio, School of Psychology  
*For commitment to evidence-based practice and leadership in developing effective programs that foster graduate attributes and student engagement across the lifecycle.*

Dr David Neumann, School of Psychology  
*For improved student engagement, retention, and success in statistics courses through the creative use of technology and the development and delivery of learning resources.*

#### *Successful Leadership for Excellence in Teaching and Learning Scheme*

The Australian Learning and Teaching Council (ALTC) recently announced that Griffith has been awarded a third grant in its Leadership for Excellence scheme. The grant team led by Professor Kerri-Lee Krause from the Griffith Institute for Higher Education has been awarded \$210,000 to develop program leader networks and resources to enhance learning and teaching in multi-campus universities. The anticipated outcomes of the grant include an on-line good practice guide for Program Leaders, induction resources for new Program Leaders and consolidation of Program Leader networks.

Griffith has received \$614,000 of the \$2.8 million available via the ALTC's 2008 Leadership for Excellence in Teaching and Learning scheme.

#### *Griffith Business School (GBS) receives 5 star rating*

The Griffith Business School (GBS) has again received a 5 star rating from the Graduate Management Association of Australia for their Master of Business Administration (MBA) and International Master of Business Administration (IMBA) which is an outstanding achievement. This is the 7th year in a row and only one of only two universities to have this achievement.

#### *Open Day*

On 10 August the University held its Open Day. Generally numbers appeared to have dropped in comparison to those experienced in previous years. Having said that, more than 10,000 people visited Griffith campuses across the Brisbane-Gold Coast corridor – the crowd was steady all day. Staff fielded queries from current year 12 students and also from year 10 students wanting to ensure they chose the right senior subjects to get them into their chosen university program.

The campuses were abuzz with music and sound – local radio stations were broadcasting from each of the campuses and student DJs were helping out. There was a wind turbine on Nathan, student demonstrations of anatomy through body painting on the Gold Coast, and gaming tournaments at South Bank.

#### *English Language Support*

There is a compelling case for investing in interventions to enhance English language skills of international students. Approximately 25% of enrolments at Griffith are international students, with an additional significant proportion of domestic students coming from non-English speaking backgrounds. Poor English language competency is associated with weaker academic outcomes, problems in student retention, and less successful employment results. Currently there is no university-wide approach to identifying and assisting students in need of help with English language skills.

The Griffith University English Language Strategy intends to address these issues with a system that aims to i) increase the English language skill preparation of commencing students prior to admission, ii) identify students with English language problems at the point of entry and ensure that those in need of assistance receive the help they need and iii) demonstrate that students with initial English language weaknesses graduated with stronger English language competency. These goals will be achieved through the implementation of a series of measures which will include:

- offering assistance for those self-identifying as needing help prior to commencement.

- screening students whose overall IELTS score is less than 7, with those who fall below a cut-off being required to enrol in a “for credit” English language subject in their first semester of study.
- providing free, optional English HELP, on all campuses, for students from all programs.
- providing immersion experiences that encourage integration between domestic native English speakers and international students.
- Providing an IELTS exit test in the final semester of study, results of which may appear on the academic transcript upon request.

Domestic students from non-English speaking backgrounds will also have the opportunity to participate in these offerings. Trials will begin in 2009 and subject to outcomes, full screening will commence in January 2010. I have earmarked funds in the 2009-2011 Budget to develop this program.

*“Aboriginal and Torres Strait Islander: First Peoples” Web Site*

In consultation with the Aboriginal and Torres Strait Islander Advisory Committee, and the Inclusive Indigenous Curriculum Advisory Group, a Griffith University website is being developed that brings together the extensive amount of information relating to Griffith’s activities in the Indigenous area. The site will be called “Aboriginal and Torres Strait Islander: First Peoples” and is designed for a wide range of internal and external audiences.

The site will act primarily as an index site, pointing to other Griffith sites that are maintained by those closely involved and therefore expert in that topic. Each site will be hosted by an indigenous and a non-indigenous partnership team.

The site will be developed in phases - there will be no single publication date, but instead a gradual process. Phase 1 will place a particular emphasis on material relevant to new Aboriginal and Torres Strait Islander students in 2009.

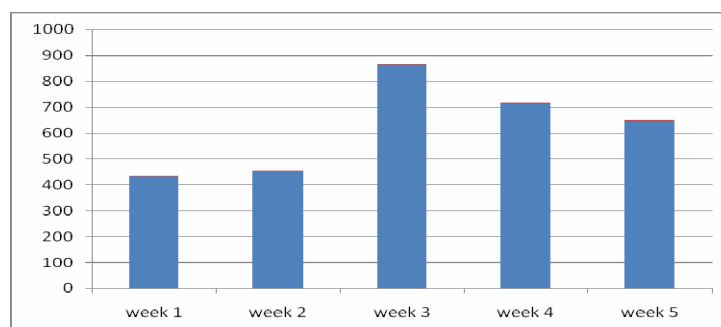
*Classroom/Lecture Capture*

Lecture capture is a system through which staff can record their lectures for students to listen and view at a later date. Students are able to download the electronic files from Learning@Griffith for listening or viewing at a convenient time in order to supplement their study. This approach aims to enhance the learning experience and is not intended as a replacement for lecture attendance. The system uses Lectopia which was originally developed at the University of Western Australia and is widely used nationally and internationally. It is capable of capturing both audio and video content, along with data slides and screen content.

Lecture Capture went “Live” on week one of Semester 2, 2008 with 19 academic staff initially participating. This figure has since increased to 21. The additional 5 academics are utilising the staff upload tool (self-service function) to add their powerpoints or video presentations into Learning@Griffith. Currently 36.5 hours of lectures are being captured each week which equates to approximately 20% of the available lecture material. This has increased from 16% in the first week. Of the lectures that were captured and made available over the first 5 weeks, there were 3,211 hits. The figure below demonstrates the frequency of downloads of files (“hits”) by students in the first 5 weeks of semester 2.

Feedback from academic staff has been positive with comments on the high quality of recordings and the potential for the tool to enhance course content, particularly with respect to guest speakers. The intention is to extend the facilities into a significantly larger number of lecture theatres for Semester 1 2009.

Lecture Capture System Report: Recording Hits by Week  
Report period: July 28, 2008 - August 31, 2008



### *Griffith Honours College Information Evenings*

Information Evenings for prospective students and their parents interested in Scholarships and the Griffith Honours College were held on Gold Coast and Nathan Campuses on 9th and 10th September. Professor John Dewar explained the Honours College and students spoke about their experiences in the Griffith Honours College. The highlight of each evening was the address from two mothers of Honours College students who spoke openly about how the Honours College experiences had improved their daughters' leadership and social skills as well as assisted with their transition into University.

### *Health and Well-Being*

Student Services annually coordinates Health Month across all campuses (Gold Coast, Logan, Mt Gravatt, Nathan, South Bank – QCA and South Bank –QCGU). Key themes this year were: nutrition, responsible alcohol consumption, fire safety, first aid, work life balance and emotional well-being.

Activities once again included health assessments, safe alcohol awareness activities (beer goggles), interactive quizzes, questionnaires and guessing competitions covering topics such as sexual health, financial health, emotional well-being, and financial health. Cooking demonstrations and sampling, along with lots of give-aways and health promotion displays and handouts all contributed to success of these events. An estimated 3000 students and around 140 staff attended the events on all campuses.

Prior to Health Month we surveyed students using the student poll facility in the student portal, and asked students to tell us what they would like to know more about concerning their health and well being. The information was analysed and used in the development of activities during Health Month.

### **Health Day – Nathan Campus**



### **Health Day – Gold Coast**



### *Career Engagement and Graduate Outcomes*

Griffith continues to move towards embedding career development into academic programs. This year all first year students in the Griffith Business School will undertake a module of career development work for assessment. Students undertaking the revised Bachelor of Arts will also commence this program in 2008.

### *2008 International Careers Fair*

The International Careers Fair, held on 1 September at the Suncorp Stadium went very well with 28 exhibitors participating representing 57 organisations. The fair this year is a combined initiative of Griffith, UQ, QUT, USQ and Bond University. Details of attendees from each institution are currently being compiled.

### *2008 Industry Mentoring Program*

Some 225 students and 220 mentors have been matched as part of the Griffith Industry Mentoring Program in 2008, launched at the Gold Coast and in Brisbane in late July/early August. The Program won a national citation for programs that support student learning in July this year, and has been adapted for the School of Medicine for a specific industry mentoring activity in Semester 2, 2008.

### *Orientation 2009*

The University is commencing the process of planning for Orientation 2009 with the Student Orientation and Engagement Committee discussing publications, webpages, School and central activities, and strategies to support peer mentoring programs across the University. The theme for Orientation and transition in 2009 will continue as *Up and Running* and elements are being encouraged to use this as a sub-brand on all promotions of resources and events relating to pre-Orientation, Orientation and transition for students new to Griffith.

## **People: Staff**

### *Achievements*

#### *National Water Commissioner Appointment*

Climate Change and Water Minister Senator Penny Wong announced late August the appointment of Griffith University Australian Rivers Institute Director Professor Stuart Bunn as a National Water Commissioner. Professor Bunn's appointment is one of six new key appointments to the commission.

The three commissioners nominated by the states and territories are Professor Stuart Bunn (Director, Australian Rivers Institute, Griffith University); Adjunct Professor Chris Davis (former CEO, Australian Water Association), and Elaine Gardiner (Chairman, Ord Irrigation Cooperative). The three Australian Government-nominated commissioners are Laurie Arthur (Chair, National Farmers Federation Water Task Force); Sally Farrier (Director, Farrier Swier Consulting Pty Ltd); and Chloe Munro (current National Water Commissioner and Executive Director, Innovation Projects for the Digital Future, Telstra).

#### *Queensland-China Climate Change Fellowship*

Associate Professor Poh-Ling Tan from Griffith Law School has been awarded a Fellowship under the Queensland – China Climate Change Fellowship Program. Associate Professor Tan has been awarded the Fellowship to research the legal and policy issues related to water resource allocation and security in the interest of climate change adaptation.

#### *Peter Doherty Award*

The Science on the go! and Southern Science Centre for Innovation and professional practice activities continue to expand. The team, led by Associate Professor Richard John, School of Environment, with seconded Education Queensland teachers Randall Hall, Dale Pearce, Sid Hooker and Louise Maddock were recently recognised by the Peter Doherty Award for best 'Science Education Partnerships' to coincide with National Science Week celebrations, announced by Queensland Education and Training Minister Rod Welford.

### *Appointments*

As Council members will be aware, Ms Janice Rickards, Pro Vice Chancellor (Information Services) will be retiring from the University at the end of October 2008. Janice has made an outstanding contribution to the University during her nine years in this position playing a key role in advancing the University's strategic agenda.

Following a recent recruitment process, I am pleased to advise Council approved by flying minute the appointment of Ms Linda O'Brien as the new Pro Vice Chancellor (Information Services) and will commence her appointment on Monday 27 October 2008. Ms O'Brien is currently Vice Principal, Information and CIO at the University of Melbourne. In this position she has been responsible for the overall strategic planning, management and administration of the University's information systems and audio visual services, as well as overseeing the provision of information and communication technology infrastructure. She has previously worked at the University of Newcastle as Vice President University

Services and as Director Information Technology, following extensive experience as a librarian at the Universities of Sydney, James Cook and Canberra.

A number of professorial appointments have been made since my last report to Council. Details are attached. (Attachment 1)

*SEET Excellence Awards*

The SEET Group held its inaugural Pro Vice Chancellor Excellence Awards night to celebrate and recognise excellence in research and outstanding service at G's Wine Bar in September. In recognition of the Group's research outputs, and to promote and encourage research performance in emerging areas of research strength, Research Excellence awards were made in the following categories; Excellence of a Research Group or Team to the National Centre for Adult Stem Cell Research, Eskitis Institute; Early Career Research Award to Dr Christine Wells, Eskitis Institute and, Excellence of a Research Group or Team Highly Commended to Discovery Biology, Eskitis Institute.

In recognition of activity that enhances the Group and University's profile, standing and engagement with its communities and in order to promote and encourage performance in service, awards for outstanding service were made in the following categories; General Staff to Delwyn Langdon, Rhiannon Chamberlain & Lisa Malcolm from the EcoCentre, Excellence in Service (Academic Staff) to Associate Professor Richard John, School of Environment, SCIPP, Science on the Go! and, Academic Staff Highly Commended to Dr Vallipuram Muthukumarasamy, School of Information and Communication Technology.

*Academic Staff Statistics*

As a growing and changing University in a very competitive higher education environment, Griffith University is constantly monitoring and refreshing its staff profile. As requested by a Council member I provide the following summary table of staff turnover.

The table provides a three year comparison of Griffith to the national average for academic staff turnover in a benchmark group of 30 universities.. Griffith's 2007 figures were affected by the restructure of the SEET Group which resulted in almost 20 redundancies.

	Griffith			Benchmark Group Average		
	2005	2006	2007	2005	2006	2007
<i>Academic A</i>	28.6%	33.4%	31.0%	34.1%	34.4%	31.3%
<i>Academic B</i>	12.7%	15.9%	17.6%	14.7%	15.3%	15.9%
<i>Academic C</i>	8.9%	9.8%	15.9%	9.7%	10.4%	11.2%
<i>Academic D</i>	12.0%	4.4%	12.7%	9.0%	9.2%	9.8%
<i>Academic E</i>	14.0%	5.3%	10.8%	8.1%	8.9%	8.6%

Another Council member has requested data on sessional staff employment. The 2006 data below provides the most recent national comparative data. It shows that the comparative level of sessional staff varies depending on the discipline group. Thus our commitment to provision of clinical supervision is evident in the health figures, and highly skilled practising artists and musicians in the creative arts figures.

**2A - Sessional Academic Staff at Griffith University of All Academic Staff Compared to National Averages - 2006**

<b>Broad Field of Education</b>		<b>National Data</b>				<b>Griffith Data</b>			
		FTFFT	Sessional	All Staff	Average Sessional Rate	FTFFT	Sessional	All Staff	Average Sessional Rate
1	Natural and Physical Sciences	6799.19	1045.26	7844.45	13.32%	184.95	21.12	206.07	10.25%
2	Information Technology	1680.25	388.3	2068.55	18.77%	43.5	11.18	54.68	20.45%
3	Engineering and Related Technologies	2706.43	411.11	3117.54	13.19%	46.45	5.55	52	10.67%
4	Architecture and Building	568.25	188.39	756.64	24.90%	13	1	14	7.14%
5	Agriculture, Environmental and Related Studies	766.39	70.9	837.29	8.47%				
6	Health	5463.3	1138.08	6601.38	17.24%	119.9	69.97	189.87	36.85%
7	Education	2026.47	922.12	2948.59	31.27%	93.34	54.02	147.36	36.66%
8	Management and Commerce	3445.11	999.21	4444.32	22.48%	186.9	46.25	233.15	19.84%
9	Society and Culture	6880.46	1600.33	8480.79	18.87%	252.76	51.01	303.77	16.79%
10	Creative Arts	1879.1	804.22	2683.32	29.97%	93.7	69.71	163.41	42.66%

NOTE: Taken from DEEWR staff statistical data set including actual sessional and FTFFT staff FTE for 2006. Includes All Academic Staff reported in Academic Elements

**People: Students**

*Achievements*

*Young Water Scientist of the Year Award*

A Griffith 2007 PhD graduate, Dr Kylie Catterall was recently chosen to receive the Young Water Scientist of the Year Award. Dr Catterall was enrolled in the Griffith School of Environment and completed a thesis titled "Development of Rapid Microbial-Based Toxicity Assay Employing Ferricyanide as an Artificial Respiratory Electron Acceptor." Dr Catterall currently works at the Gold Coast City Council.



*Dr Kylie Catterall*

*Griffith Honours College Awards*

In September, Physiotherapy student Shaun Williams was awarded the Gold medal at the World Virtual Science and Engineering Fair at Qatar. His work on the value of using microalgae as a biodiesel

feedstock won him a prize of \$16,000 towards his university fees, \$2500 to spend at his own discretion and a laptop.

In June all Australian Vice-Chancellors were requested by the World Federation of United Nations Associations to nominate undergraduate students to compete in the 3rd WFUNA conference to be held 21-25 July in Incheon, Republic of Korea. Five of the eight students chosen to be members of the Australian delegation are Griffith Honours College students. Aja Pymble-Ward went on to win the most effective delegate voted by her peers.

In September, Arun Ketsirat received the Billie Hall Bursary sponsored by The Quota Club of Brisbane for an exceptional student in the first year of an Arts Degree.

#### *Pharmacy Student of the Year Queensland State Finals*

Two Master of Pharmacy students competed in the Pharmacy Student of the Year Queensland State Finals in August. Griffith University's Sophie Ribcak won the competition and will now attend the Pharmacy Australia Congress in Perth in late October 2008 as the Queensland State Finalist to compete in the National Pharmacy Student of the Year Competition.

#### *2008 Southern Cross Packaging Awards*

Three Gold Coast Bachelor of Visual Media students won 2008 Southern Cross Packaging Awards. Griffith students were awarded one Gold Award, one Silver Award and one Commended Award. The Gold winning student receives a trip to Melbourne for the presentation and \$500.

## **Physical facilities and information resources**

### *Physical Facilities*

A detailed report on Capital and Minor Works across the University is attached. (Attachment 2)

## **University Engagement**

### *Fitzgerald Scholarship Fund*

On 4 September, Griffith University hosted the first of a series of events to acknowledge the contribution made by the Fitzgerald Inquiry almost 20 years ago. The campaign launch for the Griffith University – Tony Fitzgerald Scholarship Fund, held in the Red Chamber of Parliament House, attracted an impressive guest list from the world of law, media and academic. Guests joined Griffith Council Member the Honourable Justice Margaret McMurdo, Queensland Ombudsman David Bevan and Walkley Award winner Quentin Dempster, to hear the Chancellor outline the importance of the Fitzgerald Inquiry to Griffith's development. The Honourable Phil Reeves MP, Parliamentary Secretary to the Premier, made a statement of support on behalf of the Queensland Government and announced a donation of \$100,000 to publicly "kick-start" the fund. Invitations to apply for the Scholarship program will be announced at the inaugural Griffith University – Tony Fitzgerald Lecture to be held in 2009.



The speakers pictured with Tony Fitzgerald are from L to R: Professor Ross Homel; Professor Charles Sampford; Chancellor Leneen Forde; Mr Tony Fitzgerald; The Hon Phil Reeves MP; Mr Matt Foley; Mr Brendan Butler AM; Professor Paul Mazerolle.

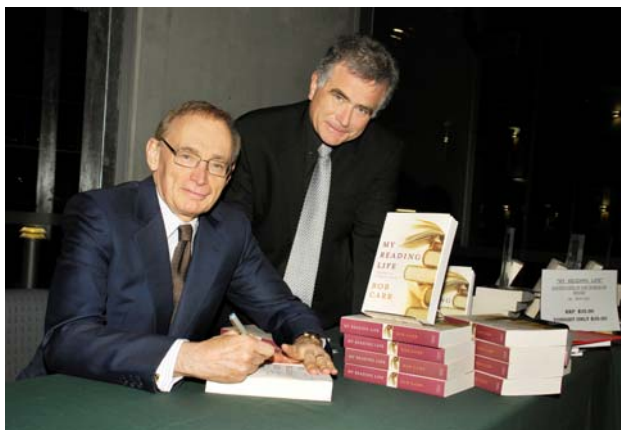
### *Nobel Laureate John Rodsted*

The annual Nobel Laureate Lecture was delivered by John Rodsted. Mr Rodsted is a photojournalist and is the official photographer to the International Campaign to Ban Landmines and part of the team that won

the 1997 Nobel Peace Prize. He has covered conflicts in Afghanistan, Cambodia, Bosnia, Sudan, Kosovo, Mozambique, West Sahara, Eritrea, Laos, and more recently Lebanon and East Timor. John Rodsted delivered a compelling presentation - *'Landmines and Cluster Bombs - Legacies of War'* - on the Gold Coast campus mid September to a crowd of nearly 300 people.

#### *The Honourable Bob Carr.*

Former NSW Premier the Honourable Bob Carr shared his profound love of books and reading in his public lecture: Writing "My Reading Life" at the Queensland College of Art lecture on Thursday 7 August. Bob Carr is an admirer of Professor Harold Bloom, a champion of Great Books courses in the US and was excited to learn that Griffith offers such a course through the School of Arts. The lecture was well attended by Griffith staff, students, alumni and the wider community. A book signing followed the lecture and a dinner rounded off what was an extremely interesting evening.



#### *Logan Careers and Information Evening*

A Careers and Information Evening was held on 30 July on Logan campus. The event was a success with approximately 100 people attending. Presentations and trade display were held by the Griffith Business School. Attendees also had the opportunity to visit prospective employers and professional associations to discuss career opportunities.

Displays were also held by Griffith Health, the School of Education and Professional Studies and the School of Information and Communication Technology. Staff and industry partners were available to provide advice on program specialisations and career opportunities. Attendees were also able to tour the campus facilities.

#### *Hip Hop Hype*

The Hip Hop Hype signature event was held on Logan campus on Wednesday, 20 August from 4pm.

This project follows on from the success of the pilot project conducted in 2007. In 2008, the program was extended from five to nine local high schools. Students undertook a series of dance workshops to support the learning of hip hop dance styles and routines. The dance routines were aimed at raising awareness about the benefits of dance as a form of physical activity and healthy lifestyles.

The Chancellor, assisted by Mr Glen Hoppner, Regional Executive Director, South Coast Region, Department of Education, Training and the Arts presented the participation plaques to the Principals of the participating schools. The HYPE signature event was a great success with approximately 1200 people in attendance.

#### *Health4Life Challenge*

As previously advised the Health4Life Challenge was scheduled for 23 August on Logan campus. The judging process was undertaken by three Griffith University Staff members on 28 August and prizes were awarded based on the following criteria:

- Unique and innovative approach
- Evidence of both lateral and focused research
- Impact and depth of the visual presentation
- Originality of work

- Reference to positive outcomes for the future

Due to the competitiveness with the School Prize category valued at \$5000, Judges decided to award two Encouragement Awards each valued at \$2 500. These two awards were given to Loganlea State High School for its project titled 'Year 8 Dance Crew' and Woodridge State High School's 'Walking Group' Project. Both schools submitted an excellent school project proposal and presented a great initiative.

The Provost, Logan campus personally presented the winning cheques and certificates for the Encouragement Awards at a School Assembly on 15 September.

#### *Logan Community Garden*

The Community Food Garden at Logan Campus is currently being relocated from its present site along University Drive to an adjacent site closer to the Logan Motorway.

In 2007 the Griffith University Community Food Garden attracted funds and project support from the Department of Employment and Industrial Relations, Queensland Health and the Department of Housing. These funds were provided for the relocation of the garden and its development as a permanent facility to support its contribution to the community as a teaching, learning and research resource for Griffith University students.

The relocation and development of the garden is well underway and scheduled for completion in early 2009. The new site will include:

- A demountable building with meeting room, kitchenette and toilets;
- Several shaded meeting areas for gardeners;
- 30 garden beds for individual or groups of gardeners;
- Plant nursery;
- African bush hut; and
- Parking area for visitors.

A launch of the Griffith University Community Food Garden is being planned for Saturday 7 February, 2009.

#### *EcoCentre*

The redevelopment of the gallery area project at the EcoCentre is well underway with stage 1, the 'Community Think Tank' area to be completed by 31st October, having obtained financial support from Brisbane City Council's Water Resources Branch for stage 1.

The EcoCentre continues to play an active role in the many community engagement activities including; the Peak to Point Festival, Climate Change presentation: Akers Solutions Pty Ltd and, the Citysmart Neighbourhood Fair RiverSunday display. The Centre's community forums continue to attract large numbers to topics such as ; Are you poisoning yourself? exploring potentially dangerous toxins exposure from cosmetics and household cleaning products and, Climate change and the impact of biodiversity in Australia by internationally renowned biologist, Tim Low.

As an exemplar for sustainable building practices, the EcoCentre is also viewed as a successful working model of an environmental education centre which has resulted in increased interest and engagement in the centre. Recently the Lord Mayor of Brisbane allocated money to build a centre at Karrawatha Forest. The managers of the Karrawatha Forest project have consulted with the centre on the way forward in developing yet another environmental education centre in Queensland.

#### *Multi-Faith Centre (MFC)*

Since my last report to Council, the Multi-Faith Centre implemented an intensive schedule of programs and activities to promote interfaith dialogue and understanding. Several faith institutions and communities cooperated with the MFC in supporting or co-hosting many of these activities.

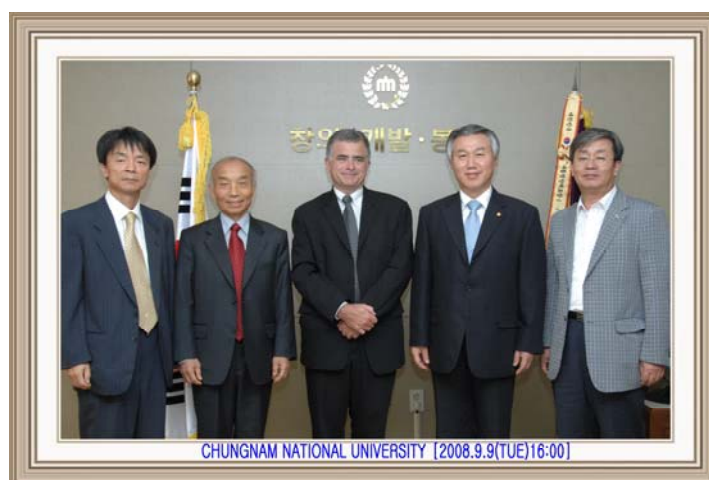
A major ongoing project is the In-service Development Training Program in Interfaith Understanding and Dialogue funded by Multicultural Affairs Queensland. Under this program, MFC conducted a series of introductory sessions on various faith, religious and spirituality traditions to provide a concise introduction of their core beliefs, values, principles, teachings and practices (personal, institutional) as well as doctrinal differences between schools or denominations within each faith.

The MFC facilities continue to be used for various academic and administrative units for meetings and other events, including a memorial service for a Faculty of Education student; prayer and meditation services and gatherings for students (local, international : e.g. orientations for English language students; graduation ) and staff depending on availability of space.

## International

I recently travelled to Korea to visit the first International University President Forum of Research Universities. As well as participating in the forum I renewed our links with Korea University and hosted a very successful alumni function.

I met with the President and senior staff of KAIST University and Chungnam National University in Daejeon, as well as renewing links with Pukyong National University in Busan. (This university is fully funding 20 Griffith exchange students a year.)



Pictured from left to right: Professor Kihoon Lee, Chungnam National University, Professor Yul Kwon, Professor Ian O'Connor, Professor Yong-Ho Song, President, Chungnam National University, Professor Yun-Seo Lim, Vice President, Chungnam National University

### *Delegations*

Griffith University hosted 16 international delegations from 10 July to 5 September, 2008. The highlights are as follows:

#### *Consul-General for the People's Republic of China, Brisbane*

The Consul-General for the People's Republic of China in Brisbane, Mr Ren Gongping, visited the Gold Coast campus (28 July) to meet with myself and Griffith International senior and executive staff. Mr Zhou Cong, Vice-Consul, accompanied Mr Ren on the day and made a presentation to our international students from China, Taiwan, Macau and Hong Kong about Consulate protection in Australia. Meanwhile, Mr Ren toured the Institute of Glycomics with Professor Mark von Itzstein, the Institute's Executive Director. I officially welcomed the delegation and gave a short speech about the University's most recent relations with prestigious institutions in China; a region where Griffith has been very active in its links which now has agreements with more than 60 institutions. I also took this opportunity to thank Miss Sisy Peng, a Griffith Bachelor of Design alumnus and President of the Griffith University Chinese Student Association, for organising a fundraising drive for victims of the earthquake in China, raising \$20,000. I commended Ms Peng for her leadership, for being an excellent role model for commencing international students; and for being an exemplary scholar.

#### *Hasanuddin University, Indonesia*

Members of the Hasanuddin University a strategically important partner for Griffith University to extend links in Eastern Indonesia in developing capacity for its environment and population health and environmental sustainability - visited the Nathan and Gold Coast campuses (22-25 July) seeking the opportunity to work with the Griffith School of Pharmacy. Dr Alfian Noor, Dean, Faculty of Natural Science and Mathematics, and his colleagues from the Faculty of Pharmacy, met with Professor Nerida Smith, Head of School of Pharmacy; Assoc Professor Clyde Wild, Dean, Academic, Science Environment

Engineering and Technology (SEET); Professor Cordia Chu, Director, International Centre for Environment and Population Health (CEPH); Professor Frank Clarke, Head of School of Biomolecular and Physical Sciences; and Professor Yew-Chaye Loo, Director, Internationalisation and Professional Liaison, SEET. The visit provided a good opportunity for all those involved to identify new areas of synergy for collaboration with Hasanuddin University and helped to strengthen our MOU activities with this key University in continuing to deliver positive outcomes for the region.

*Tzu Chi College of Technology, Taiwan*

Professor Dang-Ming Horng, President, Tzu Chi College of Technology, and delegation signed a Memorandum of Understanding (MOU) with the Griffith School of Public Health on 29 August for international cooperation for curriculum design and joint professional and academic seminars; to discuss short-term professional teaching training opportunities; and collaborative research in Health Service Administration. The MOU was signed by myself on the day, and the event was well attended by many Griffith Health staff and lecturers including Professor Don Stewart, Head of School of Public Health.

*Kobe Gakuin University, Japan*

Mr Tony Torbert from the Faculty of Business Administration at Kobe Gakuin University visited the Nathan and Gold Coast campuses (21 & 24 August) and met with Ms Heidi Piper, Manager, Study Abroad and Exchange to discuss student mobility between the two universities. Since the first agreement for cooperation was signed in 1989, 46 students from Griffith have travelled abroad to study at Kobe Gakuin University and 46 students have come to Griffith. Mr Torbert also met with the Griffith Language Institute (GELI) to discuss a 3 week English language program for their students to come to Griffith University in 2009.

*Children's Dental Centre, Malaysia*

A delegation led by Dr Ahmad Termizi Zamzuri, Senior Dental Officer from the Children's Dental Centre & Dental Training College, Malaysia visited the Gold Coast campus and the Centre for Medicine and Oral Health (4-8 August) to learn about the implementation of degree programs for Dental Therapists/Hygienists and Dental Technologists and to develop networking and collaboration in the field of training of allied oral health personnel. The delegation met with Ms Letitia Del Fabbro, International Programs Academic Coordinator, School of Nursing and Midwifery and Professor Newell Johnson, Dean and Head of School, Dentistry & Oral Health. They also met with Mr John Mackay and Ms Leonie Short who gave a tour of the Dental Clinic, Specialty Suites, Simulation Lab, Prosthetics Lab, Lecture Theatres and Tutorial Rooms (at GH1). The delegation also had the opportunity to attend two lectures; a Lecture on Health Policy in relation to Children and Families, presented by Ms Lisa Hutchinson, Associate Lecturer, School of Nursing & Midwifery (SONM) and Convenor, Child and Families; and a Lecture on History of Public Health presented by Professor Don Stewart, Head of School of Public Health.

*Yew Chung Community College of International Studies, Hong Kong*

Dr John Clark, President of the Yew Chung Community College of International Studies, visited to discuss a proposal for an articulation agreement between Griffith and the Yew Chung Community College, enabling Yew Chung Community College University Foundation Diploma and Associate Degree graduates to study first degree courses at Griffith. Dr John Clark met with Assoc Professor Hugh Wilkins, Director, Off-Shore Operations (International), Office of the Pro Vice Chancellor (Business), Mr Thomas Toh, Regional Manager for International Marketing; and Ms Lucinda Chappell, Senior Manager, International Administration (10 July) at the Nathan campus.

*University of Kassel University, Germany*

On 5 August Professor Reinhard Hünnerberg, Head of International Programs in Economics and Management from the University of Kassel, visited the Nathan campus to work on establishing a closer relationship between the two institutions. Professor Hünnerberg presented the new international programs on offer at Kassel and discussed possible ways to increase student mobility. Griffith is partnered with the University of Kassel through the Hessen-Queensland agreement which was coordinated by the German Academic Exchange Service (DAAD) in 2007 and also through the University of Kassel's School of Art. Professor Hünnerberg met Professor Christopher Auld, Dean (International), Office of the Pro Vice Chancellor (Business), Professor Lorelle Frazer, Dean (Learning and Teaching), Office of the Pro Vice Chancellor (Business); and Ms Camilla Graham, Exchange Coordinator who are looking forward to further activity between the University of Kassel and the Griffith Business School.

*The Department of Education, Employment and Workplace Relations (DEEWR), Australia*

DEEWR visited Griffith (22 August) for a photo shoot of Griffith's Endeavour Award students, which is an International scholarship program. The Endeavour Program is a component of the Australian Scholarships initiative and is managed by DEEWR to support excellence in international study, research and professional development.

#### *Other visits from Partner and Non Partner Institutions*

Other partner and non-partner institutions that visited during this period to further strengthen our collaborations included:

Shanghai Second Polytechnic University, China (4 August, 2008)

Seiry High School, Japan (31 July, 2008)

International Islamic University, Malaysia (15 August, 2008)

Abu Dhabi Investment Authority, United Arab Emirates (28 July, 2008)

UAE Military College Film College, United Arab Emirates (23 July, 2008)

Hillerod School of Nursing, Denmark (11 August, 2008)

Langports English Language College, Gold Coast (10 July, 2008)

Burgundy School of Business, France (14 July, 2008)

#### *Griffith English Language Institute (GELI)*

##### *GELI Enrolments*

In June, GELI delivered English language [ELICOS] to 775 students across its three centres (570 for Brisbane, 205 for the Gold Coast). An additional 92 students are enrolled in the GELI/QIBT Mixed English and Academic Program.

##### *EnglishHELP – Semester 2 2008*

English HELP has continued to support students with 133 individual consultations and 350 students attending workshops.

##### *New Relationships*

On 4 September, GELI and the Gyeonggi English Villages, Korea, signed an agreement which will see 35 English language teachers attend 15 weeks of English language instruction commencing October. This is the start of a three year program, with the next intake of 45 teachers expected early 2009.

Gyeonggi English Villages have four campuses plus a Virtual campus, looking after 500 commencing students every Monday. Gyeonggi have expressed interest in working with GELI in a number of different areas such as teacher training, teacher exchange and Aviation English.

##### *Overseas Projects*

As part of the continuing relationship between Qatar Petroleum (QP) and GELI, QP will send seven staff Counsellors to GELI in October for specialised English language instruction.

GELI is collaborating with the School of Nursing and Midwifery Abu Dhabi to develop an English Language Skills program as part of their Bachelor of Nursing.

##### *IELTS Test Centre Mt Gravatt*

Due to considerable demand, the Mt Gravatt IELTS Test Centre is now delivering two tests per month for up to 400 participants.

##### *International Business Development Unit (IBDU)*

###### *Kiribati-Australia Nursing Initiative (KANI) 2008*

August saw the arrival of the second cohort of students from Kiribati. A total of 32 arrived after successfully completing the 14 week Academic Preparation Program (APP) in country. Following the footsteps of the first cohort, the second cohort will start a four year study program containing a Nursing Diploma preparation program which comprises an English language for Nurses element specially designed by the Griffith English Language Institute (GELI), a Diploma of Nursing delivered by MSIT and Bachelor of Nursing based at the Logan Campus.

IBDU welcomed the students at a five day orientation camp held at Kindilan Outdoor Education and Conference Centre. Here students focussed on sessions about Australian culture, Health, Nutrition along with physical activities. At the completion of the camp, students met their homestay families with whom they will stay for the next six months whilst completing the Nursing Diploma Preparation Program (NDPP) at Logan Campus.

IBDU hosted a bbq lunch for staff and external guests and the 57 Kiribati students at Logan campus. Awards were presented to three students from cohort one who displayed excellence in the first nursing clinical placement they completed in July.

AusAID have now approved the third cohort of nursing students who will commence at Griffith University in 2009.

#### *International Office*

##### *International Student Statistics*

Griffith University has once again performed strongly in terms of its international student recruitment this semester. As of 21 August 2008, three days before census date, international student acceptances were up by 19%, compared to semester 2, 2007.

##### *Education Services for Overseas Students (ESOS)*

To familiarise Griffith staff with our international student legislative obligations under the ESOS Act and 2007 National Code of Practice, two hour training sessions have been held across each campus of the University in August and September by Griffith International. The training sessions have been well supported by Griffith staff who brought themselves up to date with the new legislation and its application in the Griffith context.

##### *Offshore Admissions*

Our offshore operations are progressing well. The Indian offshore operations have been relocated to Dubai, taking advantage of the infrastructure and support capabilities of that office. After undergoing a complete admissions cycle for Semesters 1 and 2 2008 intake in conjunction with our onshore admissions offices, the Dubai and Kiev offices are now processing agent applications directly. Additional training for these two offices was undertaken at Griffith in June and in Dubai in August.

##### *On-Line Applications*

The new on-line application portal for international student applications went live on 5 September 2008. Our admissions teams are now receiving applications which workflow directly from the portal. We are very excited about the prospects for this system to improve our efficiencies and conversion capabilities. There are additional stages to implement with this facility, which will include an agent portal and prospect management.

##### *Scholarships*

Seven new AusAID scholars joined us in Semester 2 2008 from Indonesia, Mongolia, Vietnam, Philippines and Bangladesh. Griffith recently had a successful external audit of the management of our Australian Development Scholarships, including AusAID scholarships.

Twelve students have commenced with us this semester under the Australian Leadership Awards (ALA) Fellowship "Indonesia and Australian Environmental Management and Sustainable Development Leadership Program", led by Dr Peter Davey, Centre for Environment and Population Health in the Science, Environment, Engineering and Technology Group. These students are undertaking English and/or postgraduate study in Environmental Health/Engineering/Management.

Staff from GELI, Finance and Business Services and the GI International Scholarships Unit recently travelled to Canberra to meet with officials from the Saudi Arabian and UAE embassies to discuss the management of their scholarship students. It was a successful meeting for all parties, confirming processes and support networks.

##### *Orientation*

We had a successful Semester 2 orientation for international students from a diverse range of countries. GI Mates continued to provide excellent service to our new students in assisting them with their queries and providing much needed support. The International Advising team is keen to continue their good work in developing further orientation activities for international students who arrive two weeks prior to semester commencement.

## Media Analysis

Media monitoring shows Griffith University secured a 33 per cent increase in press items from 796 in the May/June to 1058 in July/August period. Broadcast coverage experienced a 22 per cent increase, with 1944 hits compared to 1588 in the last report. Overall Griffith experienced a 26 per cent increase in media coverage for this period.

Quantitative data tracking Griffith against QUT and The University of Queensland showed:

- The leading competitor by volume of mentions was UQ with 2228 broadcast items and 1176 press items
- Griffith was second with 1944 broadcast items and 1058 press items
- QUT ranked third with 1052 broadcast items and 621 press items

*Campus Review* featured an article on Griffith's AUQA findings (Attachment 3)

The Urban Research Program's VAMPIRE study of fuel and mortgage stress received a clean sweep of stories nationally in *The Courier-Mail*, *Sydney Morning Herald*, *The Age*, *Herald Sun*, *Adelaide Advertiser* and *West Australian* on one day, and achieved more than 60 hits on radio, TV and print subsequently. (Attachment 4)

Professor Paul Mazerolle (KCELJAG) received widespread coverage on the Understanding and Preventing Youth Violence Conference in press, radio and television including Stateline (ABC), Channel 10 News, Channel 7 News, Nine Am (Channel 7), *The Australian*, *The Herald Sun* and *The Courier-Mail*. Ross Homel (KCELJAG) was also interviewed on Stateline (ABC) and Channel 7 News about the conference and interviewed on ABC 612 and ABC 666 (Canberra) about the public harassment of paedophile Dennis Ferguson. (Attachment 5)

*The Australian Higher Education* ran a front page story on the Griffith Industry Mentoring Program after they received an Australian Learning and Teaching Council Citation for Outstanding Contribution to Student Learning. (Attachment 6)

*The Australian Higher Education* also ran profiles on Griffith Honours College—physiotherapy student Shaun Williams, and Associate Professor Ming Wei's (Institute of Health and Medical Research) research into cancer-fighting bacteria found in kangaroos. (Attachment 7)

*Australian Financial Review* and *The Courier-Mail* covered Griffith's new bonus admission scheme.

*Campus Review* ran a column by Professor Ian O'Connor and Gavin Moodie on social inclusion. (Attachment 8)

*The Courier-Mail* and ABC Online ran opinion pieces by Michael Jeh (Griffith Sports College) on sports-related topics.

Professor Richard Yeo (CPCI) was featured in *The Australian*, *The Sunday Mail* (Brisbane and Adelaide) and *The Courier-Mail* about the Notebooks and Note-takers symposium. Guest speaker Professor Ann Blair was also interviewed on Radio National's Late Night Live with Phillip Adams.

Professor Kristine Toohey (Department of Tourism, Leisure, Hotel and Sport) provided comment on the Beijing Olympics. Based in Beijing for the first week of the games, Professor Toohey provided comment on everything from the possibility of a Brisbane bid for the 2024 games, to the city's atmosphere, Australia's performance and different issues and concerns as they arose. She was quoted in/on ABC Coast FM, 2GB Sydney, Yahoo News Australia, *The Courier-Mail*, *The Australian*, Perth Now, Adelaide Now, OptusNet, *Herald Sun*, Nine MSN, *Kalgoorie Miner*, *Illawarra Mercury*, *Cairns Post*, *Townsville Bulletin*, AAP Newswire, Brisbane Times, ABC Wide Bay and Radio National - Australia Talks segment.

Dr Margee Hume (Department of Management) and Associate Professor Gillian Sullivan-Mort (Department of Marketing) also received wide coverage on the launch of their study into the effects of the internet on youth health. Coverage was received on 6PR Perth, Triple M, ABC 612 Brisbane, 4BC Brisbane, ABC Wide Bay, ABC Far North Queensland, ABC North Queensland, ABC Tropical North, ABC

Southern Queensland and *Gold Coast Sun*.

Extended coverage of QCGU pianists John Fisher and Adam Herd and their participation in the Sydney International Piano Competition was achieved in Channel 9's Brisbane Extra, Stateline (ABC), *The Sunday Mail*, *City News* and *Westside News*. After the competition Channel 10 news did a follow up piece on John and where his career is heading.

Film industry luminary George Miller's honorary doctorate conferred by Griffith in July was reported in *The Courier-Mail* and he was interviewed on ABC Coast FM, ABC 612 Brisbane and Nova FM. (Attachment 9)

Research by Dr Jane Fowler (Human Services) on the psychological impact of industrial action was featured in *The Courier-Mail* and numerous regional papers.

Griffith pharmacy students' success in a national business plan competition appeared in the *Australian Financial Review* and pharmacy trade publications.

Professor Drew Nesdale (Psychology) provided expert opinion on the topic of bullying in interviews shown on Channel 9 and NBN.

Students in the Kiribati-Australia Nursing Initiative featured in a *The Courier-Mail* article about the impact of climate change on the Pacific Island nation.

### **Publications**

The second issue of *Red* magazine is currently in its final stages of production and due for distribution in October.

## **PROFESSORIAL APPOINTMENTS**

The following professorial appointments have been made since my last report to Council in August 2008:

### **Associate Professor Mike Rathbone, School of Pharmacy**

In December 2008 Associate Professor Mike Rathbone will be starting in the School of Pharmacy. Michael J. Rathbone performed his undergraduate studies at Leicester Polytechnic, UK, and was awarded his Ph.D. from the University of Aston, Birmingham, UK. During his career he has held lectureship positions in pharmaceuticals at the School of Pharmacy, CIT, Wellington, NZ and the School of Pharmacy, University of Otago, NZ. Dr Rathbone is currently the Director of Research & Development and General Manager for InterAg, a company that innovates controlled release drug delivery platforms for veterinary applications.

Over his career Dr Rathbone has gained extensive experience in the areas of undergraduate and post-graduate teaching, science management, research and development of pharmaceuticals, product innovation, applied pharmaceutical science, strategic science leadership and company management. Dr Rathbone has innovated many novel drug delivery systems, several of which have been commercialised, and led a 5 year US registration process of InterAgs world-renown CIDR 1380 Cattle Insert.

### **Associate Professor Nikos Mattheos, School of Dentistry and Oral Health**

Associate Professor Nikos Mattheos has been appointed to position of Associate Professor of Periodontology within the School of Dentistry and Oral Health, Griffith Health and is due to commence in the role toward the later part of the year.

Assoc Prof Mattheos graduated from the Dental Faculty, University of Athens, in 1997 and after graduation as a general dentist in private practice and received Medical Officers training in the Hellenic Air Force, where he worked during 1998 and 1999 as a medical officer in various military sites.

In 1999 Assoc Prof Mattheos started his postgraduate studies in the faculty of Odontology, Malmö, Sweden. In 2001 he completed his Masters Thesis in Health Informatics. In 2003 his research abstract received the IADR young researcher's award in the Educational Research group. He completed his PhD degree in the department of Periodontology, Malmö University, Sweden in 2004. In 2004 he was selected for a post-doctoral research position in Malmö University. In the meantime he was active in the Centre for Research and Technology in Oral Health (CERT) in the Malmö University, a unit specialised in research and development of innovative learning technologies. His research has been disseminated through more than 20 publications in international peer reviewed journals and several abstracts and lectures in international congresses.

**Associate Professor Beverley Fluckiger, School of Education and Professional Studies (Brisbane/Logan)**

Associate Professor Flückiger is a distinguished educator with an outstanding track record as an educational leader in the Early Childhood field. She is held in high professional regard and brings to Griffith extensive professional experience as a teacher, in her current role as Principal of Camp Hill Infants School and emerging research strengths. Associate Professor Fluckiger commences at Griffith in October 2008.

**Professor Mike Drew, Department of Accounting, Finance and Economics (AFE)**

Professor Mike Drew will commence with the Department of AFE in October 2008. Professor Drew's specialisation is in the areas of superannuation and pensions and investment management. He comes to Griffith University from Queensland University of Technology where he held the position of Professor of Finance.

## **CAPITAL AND MINOR WORKS REPORT**

### *PHYSICAL RESOURCES*

The Nathan Library (Willett Centre) ductwork was cleaned and has been treated with a mould inhibitor to minimise future infestations of mould.

High voltage transformer maintenance was carried out at the Nathan campus over 3 weekends in August.

An air quality test was carried out in the Logan Library, leading to some minor maintenance being carried out, including cleaning of flexible points and fan blades.

An electrical audit and asbestos audit have been carried out recently on all campuses.

### *FIRE MANAGEMENT*

New Fire Safety Regulations come into effect from next year. Changes to current procedures are being made to comply with the new Regulations.

The thousand-litre water tanker at Nathan has had an equipment upgrade.

### *WATER MANAGEMENT*

At the Gold Coast campus, water meter readings year to date indicate savings of approximately one-third compared with the same time last year. Across the other campuses, water consumption generally seems consistent, with no anomalies appearing.

The replacement of toilet cisterns, pans and tapware is proceeding across the Nathan and Mt Gravatt campuses to comply with the Water Efficiency Management Plan prepared by the University.

### *ENERGY MANAGEMENT*

The company Carbon Planet is currently preparing a Carbon Foot Print for the University. The methodology used aligns with ISO 14001 – Environmental Systems and our requirements to report under the National Greenhouse Emissions Act as of July next year.

Energy-saving Ecolights were installed in the Gold Coast car park in July.

### *CAPITAL WORKS*

Paynter Dixon (Queensland) Pty Ltd recently won a Housing and Construction Award from the Master Builders Association for Industrial Buildings Over \$12M for the Eskitis Institute for Cell and Molecular Therapies at the Nathan campus (N75).

#### **Glycomics Expansion (G26), Gold Coast campus:**

The project achieved Practical Completion on 11 July: however work on the fitting out of the Lecture Theatre is ongoing with an expected completion by the end of September.

#### **Smart Water Research Facility (G51), Gold Coast campus:**

The Total Project Sum offer from the D&C Manager submitted in June has been accepted and work has commenced on site with bulk excavation works nearing completion.

Detailed documentation is proceeding to enable sub-contact Trade Package tenders to be called.

Works to be undertaken during September will comprise the detailed excavation and pouring of concrete for footings, and the forming of columns to support the upper level.

Practical Completion of the project is scheduled for 24 July 2009.



Smart Water Research Facility excavations

**Refurbishment of the Graham Jones Centre (G18), Gold Coast campus:**

The granting of Practical Completion is awaiting approval from QFRS although full occupation of the building has occurred. Some minor works are still to be undertaken.

The completed project has attracted much favourable comment regarding the design, finishes and furniture, and the project has set a new benchmark for future Library developments and upgrades.



Graham Jones Centre refurbishments

**Mt Gravatt Tennis Centre (M29) & Sports Facilities (\$3.58m):**

Work on the tennis courts commenced in early June: however work was halted due to heavy rain and an existing poorly constructed stormwater drain crossing the site, which caused a wash-out and formation of cavities in the surrounding soil.

A new drain was constructed around the courts to prevent any problems in the future, and the old pipework was removed. The resultant trench was filled with spoil and compacted to achieve comparable density with the existing ground.

The gravel base courses for the courts are currently being placed, and work on the Club House is progressing well, with the substructure completed and the floor slab being poured before the end of August.

The expected date for Practical Completion is now 12 December 2008.



Tennis Centre excavations

**Upgrade of Nathan & Mt Gravatt campuses (\$33m):**

Approval has been received to undertake the following projects on the Nathan campus:

- Refurbishment of the toilets in the Business 1 (N50) building
- Refurbishment of the Central Theatres (N18) toilets
- Refurbishment of toilets in Science 1 (N25), Science 2 (N34) & Technology (N44) buildings
- Refurbishment of the East Wing of the Business 1 (N50) building
- Refurbishment of the outdoor area associated with Northern Theatres 3, 4 & 5 (N29) and the refurbishment of the toilets in both Northern Theatres buildings (N22, N29)
- Refurbishment of the Biomolecular Laboratories, Science 2 (N34) to PC2 Standard
- Refurbishment of selected building entries and foyers
- Cleaning and repairs to building facades.

The following projects have been approved for the Mt Gravatt campus:

- Refurbishment of selected building foyers
- Upgrade of the Visitors Circle.

Refurbishment of the Technology Building at Mt Gravatt (M07) is also approved subject to the development of a comprehensive list of refurbishment priorities.

A report on the status of commenced projects is provided under the 'MINOR PROJECTS' heading.

**Science & Engineering Building (G39), Gold Coast campus:**

Project Coordination Qld Pty Ltd has been appointed as the D&C Manager for Stage 1 services for this project.

All design consultants have been selected and the Architects, Deicke Richards, have prepared schematic plans.

This project is subject to the Works Instruction issued to the Coordinator General for the procurement of the Gold Coast University Hospital which overrides the requirements of the IPA, and the University needs to obtain the approval of the Coordinator General to proceed with a defined scope of works under the Works Instruction.

## **MINOR PROJECTS**

### **Alterations for External Relations, Level 1 Bray Centre (N54):**

Work is under way on this project with completion to be achieved no later than the end of September.

The staff of ER have been decanted into the vacant space in the Macrossan Building for the duration of the project.

### **Refurbishment of Toilets Business 1 (N50)**

Detailed design documentation for tender purposes is in the final review process, and the works are expected to be tendered by mid September.

### **Refurbishment of Toilets Central Theatres (N18)**

Preliminary design work has been completed and a cost estimate prepared which confirms the proposed works can be achieved within budget.

Detailed design work will commence within the next two weeks with a view to calling tenders and commencing construction works in early December.

### **Refurbishment of Toilets Science 1 (N25) Science 2 (N34) & Technology (N44)**

Fee proposals from design consultants have been received and are currently undergoing assessment, to select the consultant team and commence design work by mid September.

### **Refurbishment of East Wing Business 1 (N50)**

Design consultants have been appointed and the first design meeting with all University stakeholders has been held.

The Schematic Design will be available for review by Campus Life and the Users by mid September.

### **Cleaning and Repairs to Building Facades**

The Bray Centre (N54); Environment 2 (N13) and the Willett Centre (N53) will be cleaned.

Documentation to obtain prices for this work will be prepared after consideration of the appropriate cleaning technology to be employed.

Trimming of vegetation around the buildings to provide access for cleaning and to minimise future mould growth has commenced.

**Nicola Collier-Jackson**

Director

September 2008

# AUQA finds Griffith true to itself

by Julie Hare

Judging by its Australian Universities Quality Agency (AUQA) report, Griffith University could be the benchmark for other universities to benchmark themselves against for benchmarking.

AUQA found much to praise in Griffith, especially for remaining loyal to its founding mission to "be a different kind of university" while implementing a strategic vision which it clearly and effectively communicated to its stakeholders.

AUQA also praised the university for maintaining its character despite lying in one of Australia's fastest growing areas. The five-campus university, which spreads from the inner city of Brisbane to the Gold Coast, is now the ninth largest in the country.

The AUQA report notes that the university has managed to embrace growth in its teaching, research and physical presence without compromising its founding ethos which "remains an accurate description of the university's distinctive character and purpose".

But the AUQA team found it hard to pin down that distinctiveness from the student perspective. The panel noted a "difficulty in detecting a consistent and coherent response" from staff, students and other stakeholders when they were asked to define the Griffith undergraduate experience.

"Very few of these interviewees were able to clearly express what the Griffith graduate attributes were, and why they were important to ensuring student success," the report notes.

Ultimately, the AUQA team awarded Griffith 11 commendations, 11 affirmations and nine recommendations. It looked specifically at two themes: supporting undergraduate student success and

international activities.

While a distinctive undergraduate experience may have been hard to put a finger on, AUQA was impressed with Griffith's work in attracting and retaining disadvantaged students, particularly its schools outreach program Uni-Reach and its work with indigenous and disadvantaged students.

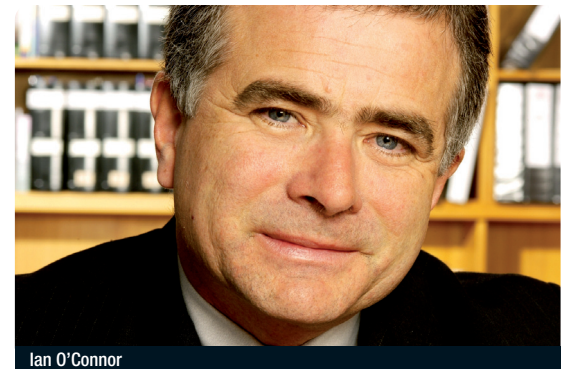
But back to benchmarking. In its first AUQA audit in 2003, Griffith had the stated aim to become one of the top 10 universities in Australia. To achieve this AUQA recommended that the university measure its performance against the existing top 10 and undertake "sufficient and appropriate comparisons".

This it has done with gusto. As AUQA notes, the university now engages in at least four types of benchmarking: sectoral, to identify areas for improvement; whole-of-institution, or making comparisons with university partners; discipline-specific, or comparing one discipline against another to inform future planning and goal setting; and standards-based or "analysing processes, practices and outcomes against a generally agreed set of standards, such as those set by professional bodies..."

The audit panel also noted that in a recent faculty review, Griffith had benchmarked against national and international benchmarks.

As to whether benchmarking had helped Griffith achieve its aim of becoming a top 10 university, the auditors noted that "while top 10 remains an important benchmark of quality, Griffith 2015 [the strategic blueprint] looks beyond top 10 by identifying a small number of areas across the university in which to achieve international pre-eminence.

"The panel concluded that the shift in goal-setting from achievement of top 10 research university status to (say) top 30 per



Ian O'Connor

cent performance in specified fields of activity under Griffith 2015 is a far more realistic approach for Griffith, especially if harnessed to differential performance targets at the level of academic area and to distinctive campus-specialisation strategies."

Griffith vice-chancellor Professor Ian O'Connor said he was pleased with the audit and that it looked "seriously at the strategic direction we've mapped out for ourselves for the years ahead."

He said the first cycle audit had helped the university to focus its strategic direction, and that he expected the second audit to play a similar role.

"Clearly we are on the right track with the commendations. The panel was impressed with the evidence of our staff engagement with and understanding of the university's strategic intent," O'Connor said. "The affirmations and recommendations are consistent with our strategic objectives and we are happy to take them on board."



## REQUEST FOR TENDERS - 2008 PROJECTS

*The National Quality Council (NQC) is a Committee of the Ministerial Council for Vocational and Technical Education (MVCTE) and oversees quality assurance and ensures national consistency in the application of the Australian Quality Training Framework standards for the audit and registration of training providers.*

**The NQC invites suitably qualified and experienced consultants to tender for the following projects:**

- Quality of Assessment Practices
- Industry / Enterprise and RTO Partnerships
- National Approach to Moderation to Improve Consistency of Assessment
- Alternate Frameworks for Recognition of Workplace Training
- Training Packages Glossary of Terms
- Scoping current research and practices in graded assessment

All projects apply to the Vocational Education and Training sector and all project specifications can be obtained by visiting the NQC website:

<http://www.nqc.tvetaustralia.com.au/tenders>

or by contacting the NQC Secretariat at TVET Australia:

**Dawn Selkirk (03) 9832 8151**

[dawn.selkirk@tvetaustralia.com.au](mailto:dawn.selkirk@tvetaustralia.com.au)

**The closing date for tender submissions is strictly 5pm (EST) Monday 6 October 2008**

*\* Note: these projects are being commissioned by TVET Australia Ltd on behalf of the National Quality Council with funding through the Australian Government Department of Education, Employment and Workplace Relations and State and Territory Governments*



Courier Mail  
11/08/2008  
Page: 5  
General News  
Region: Brisbane  
Circulation: 221049  
Type: Capital City Daily  
Size: 148.54 sq.cms  
MTWTFS-

Attachment 4  
Vice Chancellor's Report to Council  
October 2008

# Soaring costs hit fringes

**Craig Johnstone**

PEOPLE living in suburbs on Brisbane's outskirts remain highly vulnerable to soaring fuel and housing costs but some inner-city suburbs are coping better than five years ago, say Griffith University researchers.

A report by Griffith's urban research program found Brisbane was dealing much better with higher costs of living than Sydney, Melbourne or Perth.

Researcher Jago Dodson said the results from the program's VAMPIRE index, or Vulnerability Assessment for Mortgage, Petrol and Inflation Risks and Expenses, showed the number and range of households struggling to cope was spreading inwards from the outer suburbs. And while Brisbane was doing better than other cities, a 9.7 per cent growth in demand for public transport was putting the system under enormous strain.

Suburbs with low vulnerability to fuel and mortgage rises included inner-city New Farm, Bulimba and Indooroopilly, while suburbs such as Hamilton,

Stafford and Kenmore were more vulnerable.

Socioeconomic stress caused by high petrol and housing prices was highest on the outskirts such as Browns Plains, Caboolture, Capalaba and Redcliffe. More than a quarter of Brisbane suburbs grew more vulnerable to higher fuel and housing costs in the five years to 2006, the report said.

However, a similar proportion of suburbs saw their capacity to absorb higher interest rates and prices at the pump improve.

Dr Dodson said the findings highlighted the need for a "major state and federal government policy shift" to develop a national plan to improve public transport infrastructure.

"The Federal Government has been putting money into roads the last decade and refusing to put money into public transport," he said.

He said the Rudd Government's new Infrastructure Australia body should steer away from projects that did little to reduce the reliance of urban residents on car transport.



# Drink, internet fuelling crime wave in youth

**Greg Roberts**

A COMBINATION of alcohol abuse and the impact of websites such as Facebook and YouTube has generated behavioural changes that are at the heart of spiralling rates of youth crime.

Analyses of police crime statistics from four states, to be presented at a conference in Brisbane tomorrow, show violent crime by young people is on the rise, with marked increases in offences committed by girls and by children of both sexes under 14. The proportion of violent crime committed by youth is also on the rise.

"We are seeing consistent trends indicating young people are becoming more violent," said Paul Mazerolle, director of Griffith University's Centre for Ethics, Law, Justice and Governance, who compiled the figures.

"There are clearly changes in the behaviour of young people responsible for this crime."

The number of violent crimes committed by offenders aged between 10 and 19 in the four states — NSW, Victoria, Queensland and South Australia — rose from 17,944 in 1996-97 to 23,382 in 2005-06. Violent crimes were

2005-06. Violent crimes were listed as homicide, assault, sexual offences, robbery and extortion.

The proportion of violent young offenders who were female rose from 23 per cent to 26 per cent in the same period, and from 30 per cent to 37 per cent for those aged between 10 and 14.

The younger age group is increasingly crime-prone. Boys between 10 and 14 were responsible for 519 in 100,000 violent crimes in 1996-97, rising to 547 per 100,000 in 2005-06.

The number of violent crimes committed by girls between 10 and 14 rose from 166 in 100,000 to 229 over that time. The rate of assaults by girls in the younger age bracket went up by 60 per cent in Queensland, 45 per cent in NSW and 36 per cent in Victoria.

"Youth violence is still largely driven by young males, but young females are trending upwards," Professor Mazerolle said.

"The long-term increases show sharp percentage increases for the younger age group — those between 10 and 14."

Websites had fundamentally changed the way young people related to each other, he said, and this could be linked to the in-

crease in youth crime.

"It's generated competition and encouraged them to look at ways of gaining status," Professor Mazerolle said.

"Young people want to demonstrate superiority and toughness. That's why we've seen a proliferation of things like the videotaping of violent confrontations."

Professor Mazerolle said alcohol abuse was behind much of the crime and that it was worsening as a result of mass communications through internet postings and mobile phones.

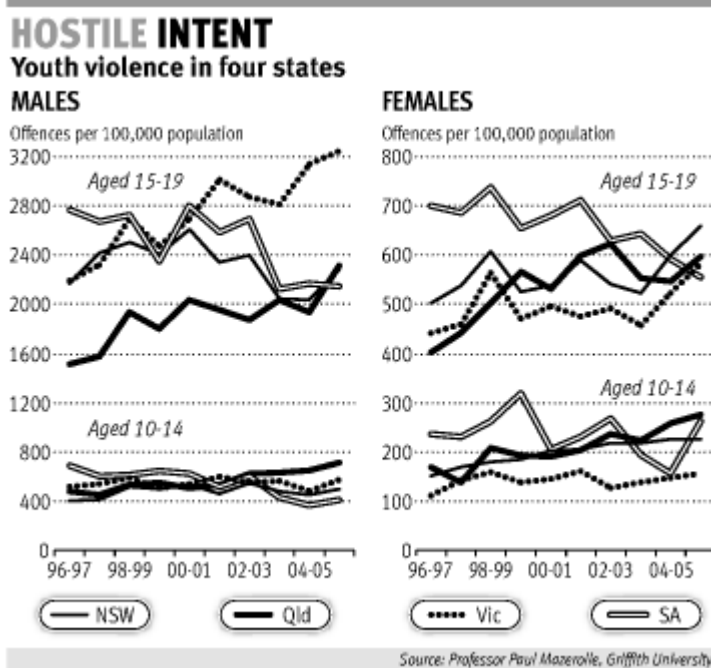
"A birthday party that might once have been attended by 20 teenagers will now have 200 gatecrashers. Alcohol and young people are an explosive mix."

Professor Mazerolle said education and the justice system needed to adjust to the changing youth culture.

"Kids should learn at school that one punch can kill. A softly, softly approach, where we give young offenders a third and fourth chance, is no longer appropriate. We need intervention at young ages to redirect kids at risk from a pathway of delinquency."



**Australian**  
**08/07/2008**  
 Page: 5  
 General News  
 Region: National  
 Circulation: 133000  
 Type: National  
 Size: 310.23 sq.cms  
 MTWTF





# Griffith mentors a progress in work

**Jill Rowbotham**

RECEIVING a first-rate education is all very well, but even the brightest sparks at university can find themselves in a quandary over how to convert that to a satisfying career.

Griffith University is among those tertiary institutions that decided to do something about it and in 1994 established an industry mentoring program. It kicked off with 15 mentors (matched to the same number of students). By the time Dina Fyffe came on board in 1998, it was a growing concern. This year it boasts 230 students and 225 mentors.

"Students are frequently unclear about their career direction," said Ms Fyffe, a career development officer based at the university's Nathan campus and one of a team of four who manage the program.

They also don't know what career opportunities come with their degree or how to make the transition from university to the workforce.

The way in which the Griffith Industry Mentoring Program has helped students clarify these issues over 14 years has been recognised with a Australian Learning and Teaching Council citation.

Asked to isolate one factor that separated the program from others at universities across the country, Ms Fyffe settled on its highly structured nature.

It starts and finishes each year with a formal function at a big city hotel. Each mentor and

student ("mentee") receives specific training in what is expected from them in the relationship; the student is given a log book; the pair are expected to keep in touch at least weekly and meet at the mentor's workplace. Where possible, the mentor will arrange work experience or project work for their protege.

"And we ask the mentors to be good listeners, to try to think back to how they felt when they started their first job," Ms Fyffe said.

They also need to be good communicators, to talk about the challenges and difficulties they have experienced in their careers and give advice without being bossy or overbearing.

Students love it. They go online to read the details and biographies of prospective mentors, then make a selection. If many of them choose the same one, the mentor is allocated on the basis of who is their best student fit.

This is also a general criterion for student acceptance into the program.

"They are not necessarily the top students academically but students who are switched on, who present themselves professionally," Ms Fyffe said. She estimated about 35 per cent to 40 per cent were business students, but the program operated across all five campuses and all disciplines.

More than 1000 mentors and 450 organisations have participated, two mentors have been part of the program for its entire history and 81 have been involved for five or more years.



Guiding light: Griffith University career development officer and mentor program manager Dina Fyffe

Picture: Patrick Hamilton





# High-flyer fuelled by microalgae

**Jill Rowbotham**

PHYSIOTHERAPY student Shaun Williams's first semester at Griffith University was enlivened by a trip to Qatar, where he zoomed up and down 60m sand dunes, bargained in the souk wakif (markets) and, courtesy of some research he undertook last year at high school, won the gold medal at the World Virtual Science and Engineering Fair.

His work on the value of using microalgae as a biodiesel feedstock netted \$16,000 towards his university fees, \$2500 to spend at his own discretion, and a laptop.

He represented Oceania and was up against entries from Pakistan, Qatar, Germany and Canada.

The judges liked the practical nature of his research, showing microalgae oil was as efficient as oil from other potential feedstocks.

He became interested in the idea after seeing a television story that examined the prospects of replacing non-renewable fossil fuels with biofuels. The biofuel industry in Australia is in its infancy and still in the process of working out how to produce large quantities on a commercial basis.

"It turned out microalgae had a similar energy content to mustard and sunflower seeds, but both of them required arable land and you can only extract oil from their seeds, most of the plant is not of any use," he explains.

Microalgae are photosynthetic organisms grown in ponds.

Williams epitomises the hyper-bright self-starters the university is seeking to attract for its experimental, elite program, the Griffith University Honours College. This is an adaptation of programs in North America.

Williams, graduating from the Gold Coast's Keebra Park State High School with an OP2 (the highest score in the Queensland system is OPI), was automatically eligible to apply for membership of the college.

He was among its first intake of 140 undergraduates. Benefits include a tailored orientation program, access to a mentor, and opportunities for international study and high-value experiences beyond those available to other undergraduates, program co-ordinator Kim Holmes says.

"Two of the Queensland Conservatorium students were introduced to Brian Howard, the composer-in-residence of the Queensland Orchestra, and showed him their compositions, and four film school students attended a masterclass with film director George Miller," Holmes offers by way of examples.

Of eight Australian university students selected to attend the World Federation of United Nations Associations Conference in Incheon, South Korea, in July, four were from the college.

Williams has landed on his feet via his membership of this elite group as he pursues his longstanding commitment to physiotherapy. "I've always wanted to do physiotherapy, as an ex-rugby league player with a couple of knee reconstructions," he says wryly.

And while he is clearly a potential high-flyer and flush with funds, life is still down-to-earth: he lives at home with his father and works part time at Subway, making submarine sandwiches.



Hyper-bright self-starter: Griffith University student Shaun Williams

Picture: Lyndon Mechielsen



# Australian higher education falling behind in social inclusion agenda

The dramatic increase in university places since 1991 has made little difference to the socio-economic composition of the student population. A different approach is needed, say

**A**ustralian higher education policy needs to be transformed. The current policy is not improving the share of enrolments from people from low socio-economic status (SES) backgrounds, indigenous Australians, or people from rural and isolated areas. In their 'Analysis of equity groups in higher education 1991-2002' for the then Department of Education, Science and Training, Richard James and colleagues from the Centre for the Study of Higher Education found that there had been negligible if any improvement in the participation of students from low SES backgrounds since 1991. A subsequent study found no further improvement by 2006.

There is evidence that Australia is unusual in failing to improve access for people from low SES backgrounds. In a 2007 paper, Clancy and Goastellec compare the changes in social groups' access to higher education in seven countries: Australia, Finland, France, Ireland, Norway, the UK and the USA. They conclude that "in only one of the countries on which we report, Australia, has there been no reduction in social group inequalities – in this instance over a period of almost two decades".

There are two possible explanations for this failure. First, too much emphasis may have been given to improving access by expanding the system. Studies have found that expansion of higher education reduces inequality when participation of the advantaged group reaches saturation, but not before. That point is reached when around 80 per cent of young people participate. Moreover, at this point, it may be – although the evidence here is mixed – that lower inequalities in participation overall may be replaced by inequalities in participation in a more selective tier or track at that level.

A second possible reason is the lack of a strong causal explanation or hypothesis for underrepresentation. Peter Karmel has observed that "aspirations to enrolment in higher education are formed earlier in the lives of potential students than at the point of entry. Family attitudes, parental

expectations and the cultural environment affect the educational aspirations of the young. Persistence at school is the critical factor in bringing people to the point of entry to post-school institutions. Accordingly, higher education institutions can make only a minor contribution to improving the social mix of students."

James and colleagues argue that it is likely that a lower level of achievement in school by pupils from low SES backgrounds is a precursor to lower educational aspirations and thence lower school completion rates. This is echoed in international findings, which have led governments in the US and the UK to develop a role for higher education in raising the aspirations and achievements of pupils in the early and middle years of schooling. Higher education institutions provide systematic and graduated enrichment and support programs for pupils, their teachers and their parents. Some programs offered by US college start with pupils as early as third grade. Programs include tutoring, mentoring, counselling, activities to involve parents, and development of school curriculum and staff.

The success of these US programs led the Clinton administration in 1999 to introduce grants of six years to states and partnerships to provide services at middle and high schools in depressed areas. Programs serve an entire cohort of students beginning no later than the seventh grade and follow the cohort through high school.

In 2001 the Blair Government in the UK introduced Excellence Challenge to raise the higher education awareness, aspirations and attainment of young people from underrepresented groups. James and colleagues report that "after 18 months of [the program], the proportion of year 11 students from participating schools was 3.9 per cent higher than in non-participating schools".

In contrast to the US and the UK, there has been no national higher education early outreach program in Australia.



### Implications for Australia

We draw from this evidence and experience seven implications for Australian higher education. First, as we argued previously (CR, 26.02.08), universities' work with their local communities is important and should be strengthened. Many Australian universities are located in areas of high relative disadvantage. They should seek to develop their communities' engagement with social life at the highest level.

Second, it is important that development is not concentrated in the cities and regions that already enjoy natural advantages. There are still important regions without a higher education presence.

Outside the capital cities, 61 per cent of young people aren't participating in education, as against just 41 per cent in the cities.

A campus with a catchment area of much less than 100,000 can't support the range and quality of programs that students expect. Since TAFE colleges are much more widely dispersed than more expensive university campuses, much of the opportunities for regional participation in higher education should be through TAFE offering associate and perhaps bachelor degrees under the auspices of a collaborating university. Some universities have established small higher education campuses in towns of 50,000 or fewer people, some of which also have a TAFE college. Some regional university campuses are co-located with TAFE campuses. But university-TAFE co-locations and partnerships still maintain separate teaching staff, administrations and facilities, which make them less efficient than combined operations. Governments will need to collaborate and coordinate their institutions to establish one dual sector institution and campus in these regions which warrant one but not two separate public tertiary education providers.

Third, any action by a university should be coordinated with complementary action by other agencies. Universities should also develop their social inclusion policies with adult and community education, and with the lower levels of secondary education and the upper levels of primary education since these are where the aspiration for tertiary education is formed.

Fourth, higher education programs will have to be offered in ways that attract and retain

students who previously had not considered higher education. This may be achieved by relating education and work in new ways, or by interspersing blocks of work and intensive study in various combinations convenient to employers, educational institutions and students.

Fifth, the sector must aim for proportionate participation by class, race, sex, ethnicity, location, and for people with disabilities and those who have other special characteristics that may restrict their engagement. Each campus will need to tailor a social inclusion policy and programs to its locality.

Sixth, a national social inclusion program in higher education is needed, incorporating three tools or mechanisms. A *national directory of social inclusion interventions* would record for each intervention the underrepresented groups it serves and the targets that have been set. Simply publishing the directory will show gaps in provision and stimulate institutions to coordinate their programs and fill gaps. An *Australian atlas of social inclusion interventions* would identify disadvantaged regions that are not currently served by higher education institutions. The third component should be *monitoring of targets*, performance against which should inform the allocation of targeted social inclusion funding.

Finally, extensive targeted funds will be needed to improve equity performance. In the Commonwealth's 2008-09 budget, just 1.5 per cent of contestable institutional performance funds are for institutional performance in equity. Equity is no less a core institutional activity than research and teaching. It is also very expensive, since it is labour-intensive and requires the provision of additional resources to targeted students.

The targeted social inclusion funds should be allocated on two grounds: to fill gaps (identified through our proposed national directory of social inclusion interventions), and to reward the performance of institutions that achieve the milestones they set in their social inclusion policy. ■

**Ian O'Connor is vice chancellor and Gavin Moodie is principal policy adviser of Griffith University. This article is a précis of the university's submission to the review of Australian higher education, available at [www.griffith.edu.au/office-vice-chancellor/higher-education-policy](http://www.griffith.edu.au/office-vice-chancellor/higher-education-policy)**



**Courier Mail**  
**30/07/2008**  
Page: 32  
Qconfidential  
Region: Brisbane  
Circulation: 221049  
Type: Capital City Daily  
Size: 241.16 sq.cms  
MTWTFS-

Attachment 9  
Vice Chancellor's Report to Council  
October 2008

**CONFIDENTIAL**

WANT MORE? GO TO [COURIERMAIL.COM.AU/QCONFIDENTIAL](http://COURIERMAIL.COM.AU/QCONFIDENTIAL)

**Amy Harris**  
Phone 3666 6016  
Email [harris@qnp.newstld.com.au](mailto:harris@qnp.newstld.com.au)

**Phil Bartsch**  
Phone 5584 2870  
Email [bartschp@qnp.newstld.com.au](mailto:bartschp@qnp.newstld.com.au)



HAVE YOU GOT A STORY? SPOTTED A STAR? GIVE US A CALL

## George happy with double doc



THE man behind the Academy-Award winning smash *Happy Feet* is headed to Brisbane where he is to be awarded an honorary doctorate by Griffith University.

**Dr George Miller**, who made penguins tap-dance in his animated hit, will be honoured for his huge body of work that also includes *Babe*, *Bangkok Hilton*, *Dead Calm* and *Bodyline*.

The Brisbane-born movie producer will also give the keynote speech at the student graduation ceremony tomorrow night.

George is also a patron of the Brisbane International Film Festival (BIFF) so expect to see him pop up at one or two events before he jets back to Sydney on Friday.