

# **NATIONAL OVERVIEW OF RECENT POPULATION DISTRIBUTION AND REDISTRIBUTION**

by

**Graeme Hugo**

**Federation Fellow**

**Professor of Geography**

**and Director of the National Centre for**

**Social Applications of GIS, The University of Adelaide**

**Paper Prepared for National Coastal Urbanisation Symposium,**

**Robina Community Centre, Gold Coast, Queensland**

**29 March 2004**

# OUTLINE OF PRESENTATION

- Introduction
- Settlement Classification in Australia
- Characterising Australia's Population Distribution
- Processes of Population Redistribution
- Interstate Population Distribution
- Urban : Rural Population Distribution
- Population Distribution in Non-metropolitan Australia
- Population Distribution in Major Cities
- Policy Issues
- Conclusion

# Classifying Settlements

Where people live is important.

Patterns of settlement are changing.

Influence of transport and communication.

Settlement classification has not adjusted.

Need to go beyond the rural/urban dichotomy.

# Dimensions of Settlement (Coombes and Raybould)

- Settlement Size (urban/rural)
- Concentration (dense to sparse)
- Accessibility (central to remote)

# ASGC : Sections of State

- Major Urban - urban areas with a population of 100,000 and over.
- Other Urban – urban areas with a population of 1,000 to 99,999.
- Bounded Rural Locality – rural areas with a population of 200-999 population.
- Rural Balance – the remainder.
- Migratory – areas composed of offshore, shipping and migratory CDs.

# ARIA

- High Accessible
- Accessible
- Moderately Accessible
- Remote
- Very Remote

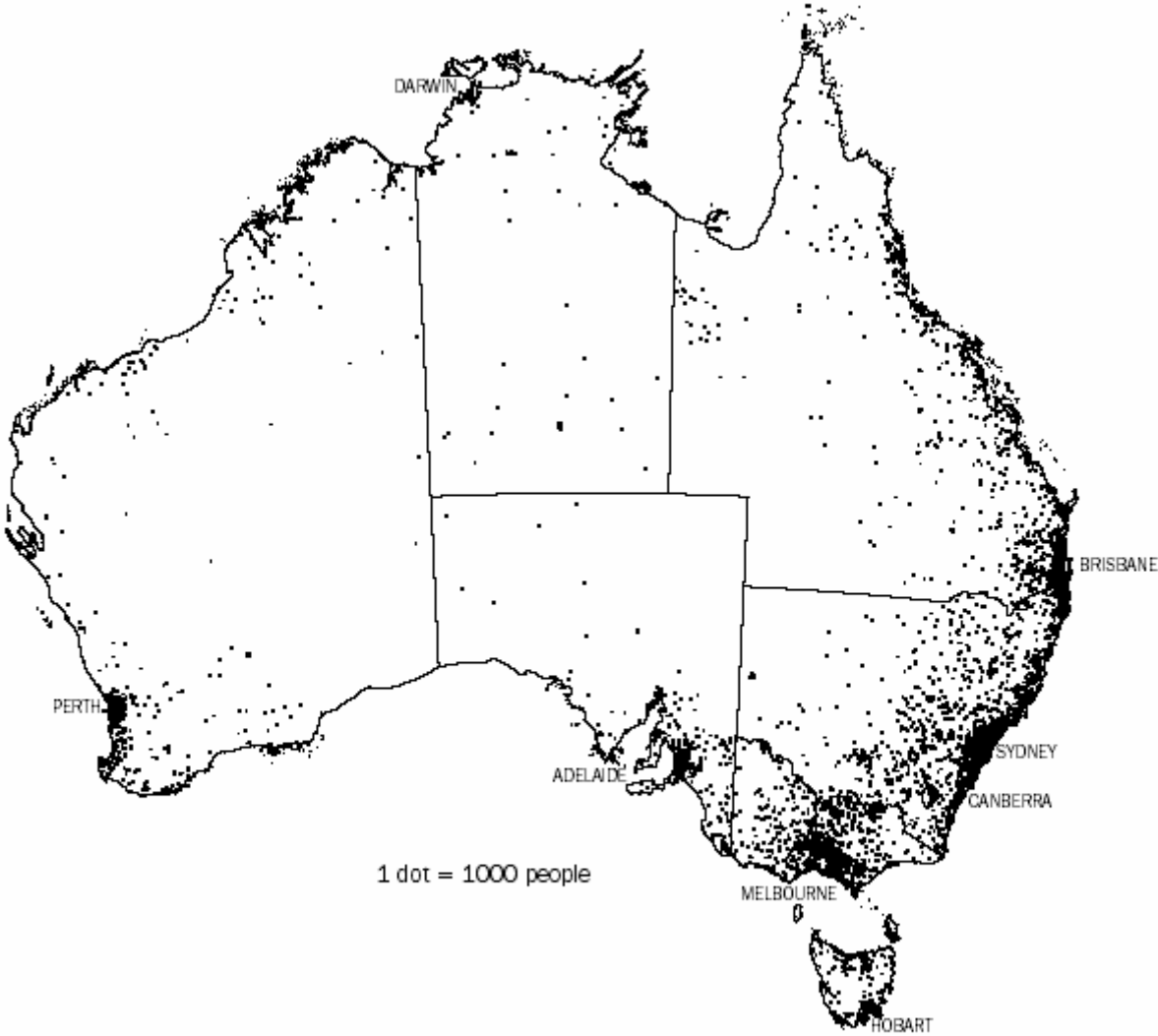
# ABARE

1. Metropolitan – capital cities.
2. Regional Cities – non capital cities with more than 100,000 persons.
3. Populated Coastal – 173 SLAs in densely populated areas within 80 km of coast.
4. Populated Inland – 338 SLAs inland from coast but not in remote and very remote ARIA categories.
5. Remote – 136 SLAs in remote and very remote ARIA categories.

# Characterising Australia's Population Distribution

- One of least densely settled countries
  - 2.6 persons per km<sup>2</sup>
- One of most urbanised
  - 87 percent in urban areas
  - 63.3 percent in capitals
- One of most concentrated
  - 81.1 percent within 50 km from Coast

# Population(a) Distribution – 30 June 2001



(a) Estimated resident population.  
Source: *Regional Population Growth, Australia and New Zealand (3218.0)*.

# Australia's Population Density, 2001

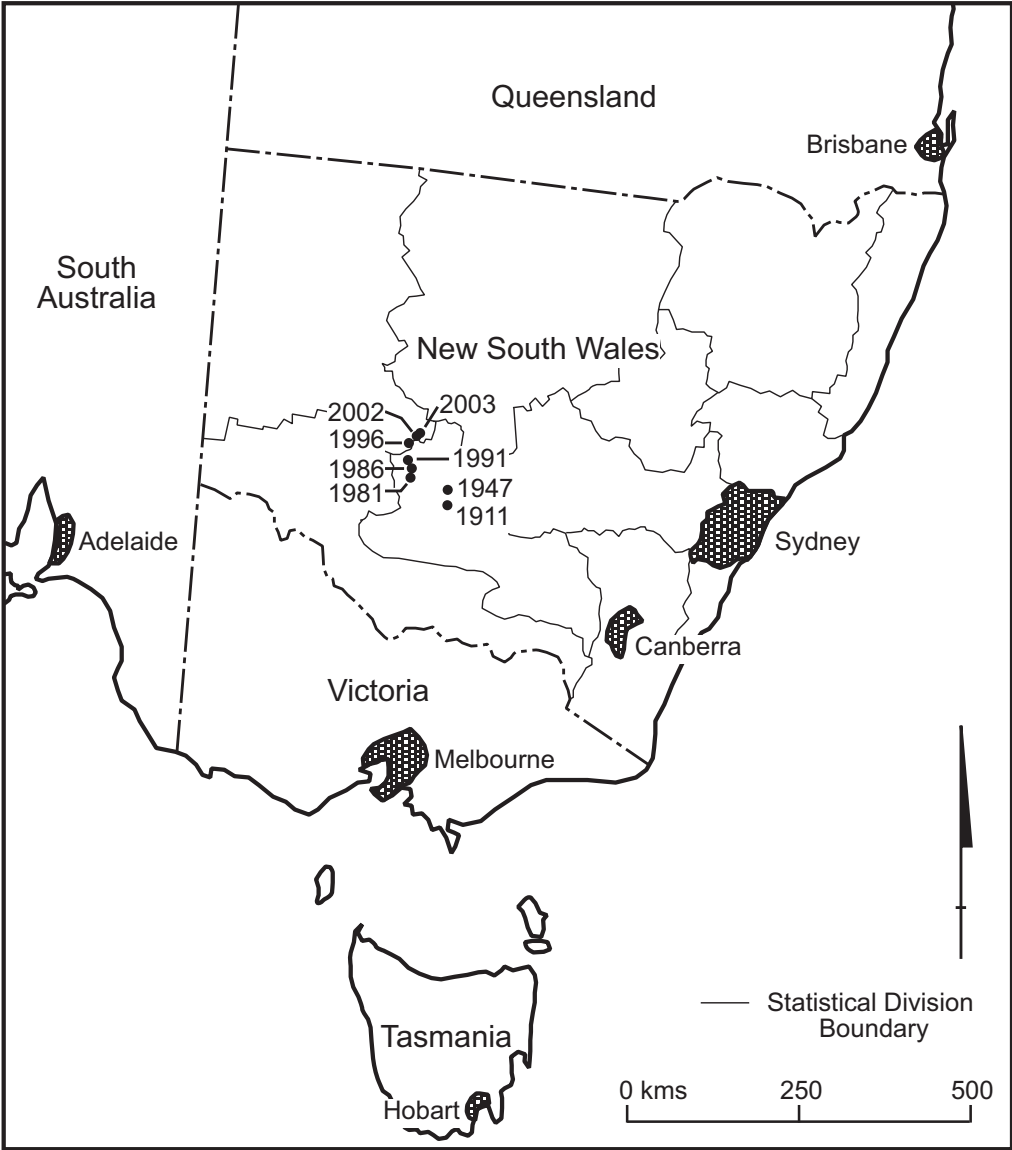
---

Density Category Persons per km <sup>2</sup>	Percent of Population	Number of People	Percent of Land
Less than 0.1	0.81	153,778	70.54
0.1 – 1	3.03	574,752	20.18
1 – 10	9.12	1,728,610	7.97
10 – 100	11.01	2,087,031	0.98
100+	76.04	14,418,042	0.33

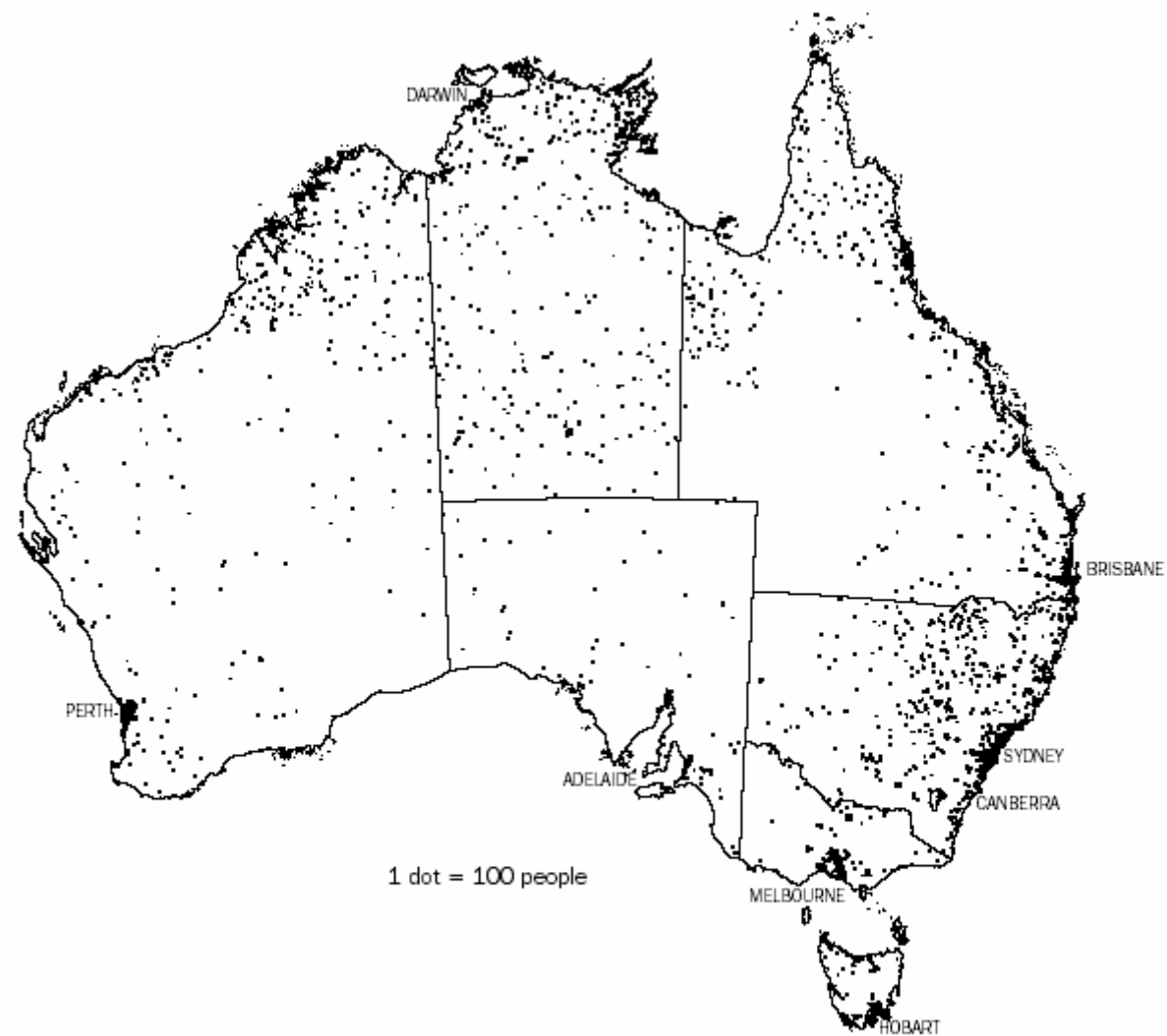
---

# Shifts in the Australian Proportion Centroid, 1911-2003

Source: Australian Censuses, ABS 2003 and 2004



# Indigenous Population(a) Distribution – 30 June 2001



(a) Estimated resident population.

Source: *Census of Population and Housing: Population Growth and Distribution, Australia, 2001 (2035.0)*.

# Australia: Population Centroid For Selected Population Sub Groups 2001

Source: Australian Census 2001



# Australia: Distribution of Population Between States and Territories, 1881-2001

Source: Rowland 1982, ABS 2000, 2003

	1881	1901	1921	1947	1961	1976	1996	2001
New South Wales	33.3	35.9	38.6	39.4	37.3	35.3	33.9	33.8
Victoria	38.3	31.8	28.2	27.1	27.9	26.9	24.9	24.7
Queensland	9.5	13.2	13.9	14.6	14.4	15.2	18.2	18.7
South Australia	12.3	9.5	9.1	8.5	9.2	9.1	8.1	7.8
Western Australia	1.3	4.9	6.1	6.6	7.0	8.4	9.6	9.8
Tasmania	5.1	4.6	3.9	3.4	3.3	2.9	2.6	2.4
Northern Territory	0.2	0.1	0.1	0.1	0.2	0.7	1.0	1.0
Australian Capital Territory	0.0	0.0	0.0	0.2	0.6	1.5	1.7	1.6
Total percentage	100.0	100.0	100.0	100.0	100.0	100.0	100.0	100.0
Total number (million)	2.2	3.8	5.4	7.6	10.5	13.9	18.3	19.4

# Australian States and Territories: Natural Increase, Net Overseas Migration, Net Interstate Migration and Total Population Growth, Financial Years 1996-2001

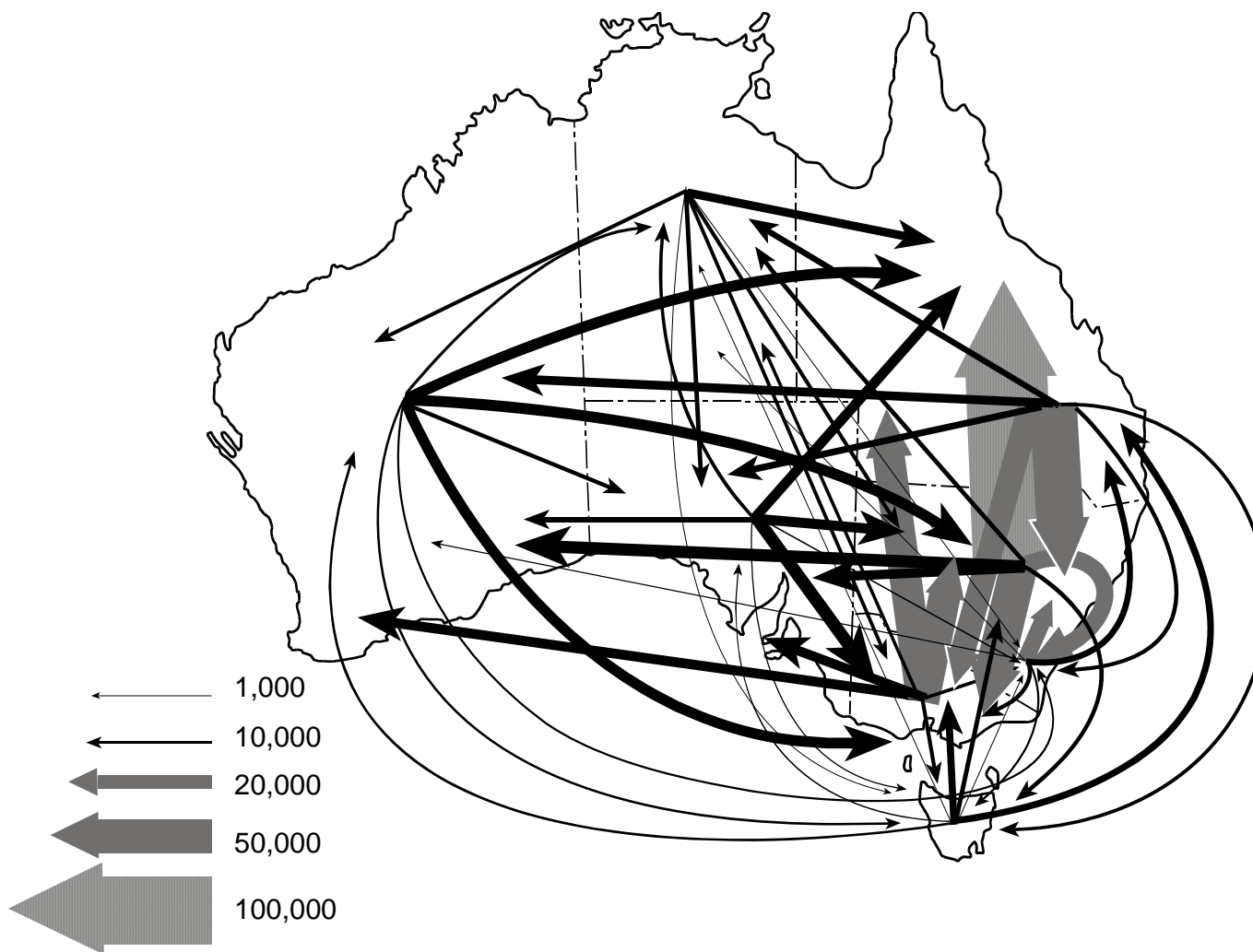
Source: ABS 2002

State	Natural Increase		Net Overseas Migration		Net Interstate Migration		Total Population Growth
	No.	% of Growth	No.	% of Growth	No.	% of Growth	No.
NSW	244,414	60.9	243,869	60.8	-86,925	-21.7	401,358
Vic	166,298	53.6	141,572	45.6	2,332	0.8	310,202
Qld	149,510	41.0	88,129	24.2	126,659	34.8	364,298
SA	39,745	118.9	19,621	58.7	-25,950	-77.7	33,416
WA	84,107	47.6	79,144	44.8	13,361	7.6	176,612
Tas	14,184	385.1	1,550	42.1	-19,417	-527.2	-3,683
NT	16,662	87.4	4,172	21.9	-1,773	-9.3	19,061
ACT	17,510	199.7	-453	-5.2	-8,287	-94.5	8,770
Australia*	732,649	56.0	576,221	44.0	-	-	1,308,870

\* Includes other Territories.

# Australia: Interstate Migration Flows, 1996-2001

Source: ABS 2001 Census



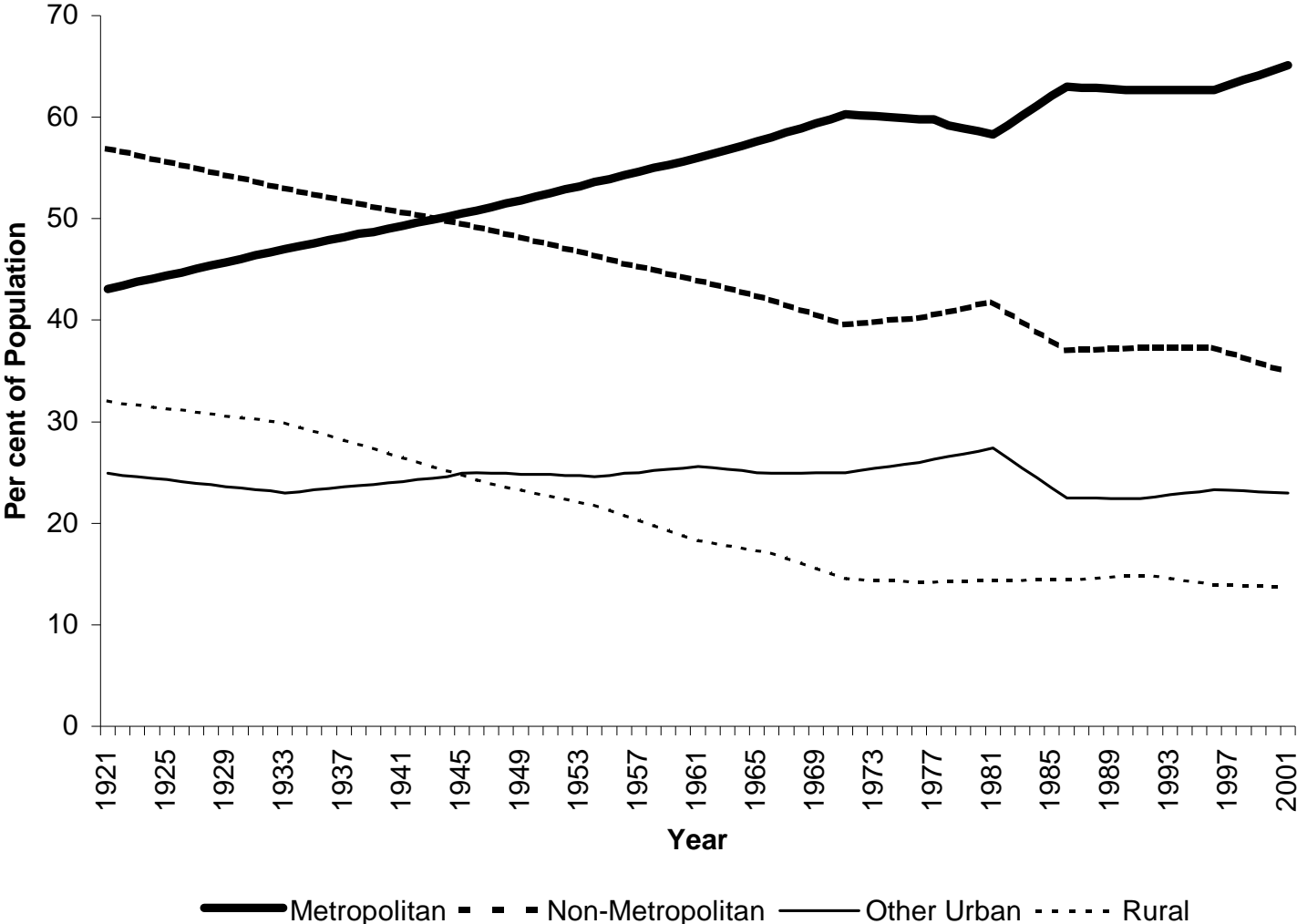
# Australia, States and Territories: Net Interstate Migration, 1966-71 to 1996-2001

Source: Bell and Hugo 200; ABS Unpublished data

Interval	State/Territory							
	NSW	Vic	Qld	SA	WA	Tas	NT	ACT
1966-71	-20,069	-26,848	15,388	-16,865	22,564	-6,810	8,816	23,824
1971-76	-74,010	-38,736	65,438	6,247	19,625	-4,044	-875	26,357
1976-81	-24,470	-55,420	83,558	-14,809	10,597	-4,515	4,458	601
1981-86	-61,736	-39,431	87,802	-8,679	15,703	-2,107	3,665	4,783
1986-91	-93,444	-44,751	124,799	-4,282	16,166	-175	-3,650	5,337
1991-96	-58,796	-78,628	145,459	-18,291	17,281	-6,251	-670	-104
1996-2001	-59,760	7,189	82,382	-10,588	2,584	-13,067	-5,573	-3,187

# Australia: Changing Distribution of the Population Between Urban and Rural Sectors, 1921 to 2001

Source: Australian Censuses, 1921-2001



# Distribution of Population by Settlement Size, 1966, 1986, 1996 and 2001

Source: Rowland 1982; ABS Censuses of 1986, 1996 and 2001

	Number of Urban Centres			Percentage of Population		
	1966	1986	2001	1966	1986	2001
500,000 and over	5	5	5	56.0	54.5	54.0
100,000 – 499,999	4	7	9	5.4	8.2	10.8
10,000 – 99,999	58	87	94	11.3	12.9	12.4
1,000 – 9,999	392	533	598	10.1	9.7	8.9
Total urban	459	632	706	82.9	85.4	86.3
Total rural				16.9	14.5	13.7
Total population <sup>a</sup>				100.0	100.0	100.0
Total number ('000)				11,599	15,602	18,972

a Includes migratory population.

# Capital Cities Growth Rates 1998-2003

Source: ABS 2004, 9

---

	Percent Per Annum	
	1998-2003	2002-03
Sydney	1.1	0.8
Melbourne	1.3	1.3
Brisbane	2.0	2.5
Adelaide	0.5	0.6
Perth	1.4	1.5
Hobart	0.4	1.0
Darwin	1.3	0.2
Canberra	0.8	0.4
Total Capitals	1.3	1.2

---

# Growth of Capitals and Rest of State 1998-2003

Source: ABS 2004,

State/Territory	Capital	Rest of State
NSW	1.1	1.0
Victoria	1.3	0.9
Queensland	2.0	1.9
South Australia	0.5	0.4
Western Australia	1.4	1.3
Tasmania	0.4	0.1
Northern Territory	1.3	0.4
ACT	0.8	0.5
Australia	1.3	1.2

## Australia: Distribution of Australia-Born and Overseas-Born Population Between Major Urban, Other Urban and Rural Areas, 1947-2001

Source: Australian Bureau of Statistics 1947 and 2001 censuses

	Australia-Born				Percent Change 1942-2001
	1947		2001		
	No.	Percent	No	Percent	
Major urban	3,390,591	49.7	8,163,371	60.0	+140.8
Other urban	1,263,724	18.5	3,335,084	24.5	+163.9
Rural	2,173,068	31.8	2,131,230	15.6	-1.9
<b>Total</b>	<b>6,827,383</b>	<b>100.0</b>	<b>13,629,685</b>	<b>100.0</b>	<b>+99.6</b>

	Overseas-Born				Percent Change 1947-2001
	1947		2001		
	No.	Percent	No	Percent	
Major urban	453,368	61.8	3,363,323	81.9	+641.9
Other urban	98,824	13.5	442,723	10.8	+348.0
Rural	181,180	24.7	299,398	7.3	+65.2
<b>Total*</b>	<b>733,372</b>	<b>100.0</b>	<b>4,105,444</b>	<b>100.0</b>	<b>+459.8</b>

\* Excludes people of no permanent residence.

# Australia: Number and Percentage of Overseas-Born Persons Resident in Capital Cities by Origin and Length of Residence, 1986 and 2001

Source: ABS 1986 and 2001 Censuses

Birthplace	1986				2001			
	0-4 Years		5+ Years		0-4 Years		5+ Years	
	Number	Percent of Total Resident in Capitals	Number	Percent of Total Resident in Capitals	Number	Percent of Total Resident in Capitals	Number	Percent of Total Resident in Capitals
MES Origin	181,747	76.8	877,266	73.0	145,910	77.0	991,134	70.1
NES Origin	291,044	88.6	1,236,518	83.5	307,785	90.1	1,762,489	86.2
Total Overseas-born	472,791	83.7	2,113,784	78.8	453,695	85.4	2,753,623	79.6

# Sydney and Melbourne Statistical Divisions: Proportion of Population Overseas-Born, 1947–2001

Source: ABS 1947, 1954, 1966, 1971, 1976, 1981, 1986, 1991, 1996 and 2001 Censuses

	Sydney Statistical Division		Melbourne Statistical Division		All Australia
	No. of Overseas-born	% of all Overseas-born	No. of Overseas-born	% of all Overseas-born	No. of Overseas-born
1947	191,107	25.7	125,258	16.8	744,187
1954	308,778	24.0	261,470	20.3	1,286,466
1961	434,663	24.4	444,479	25.0	1,778,780
1966	558,236	26.2	568,365	26.7	2,130,920
1971	681,313	26.4	687,266	26.6	2,579,318
1976	736,754	27.1	706,331	26.0	2,718,855
1981	834,280	27.8	754,117	25.1	3,003,833
1986	912,578	28.1	788,266	24.3	3,247,381
1991	1,070,627	28.5	893,445	23.8	3,755,554
1996	1,148,869	29.4	915,449	23.4	3,908,213
2001	1,233,487	30.0	954,037	23.2	4,105,444

# Longitudinal Survey of Immigrants in Australia Cohort One: Location of Immigrants interviewed in First Wave (1993-5) and Third Wave (1998)

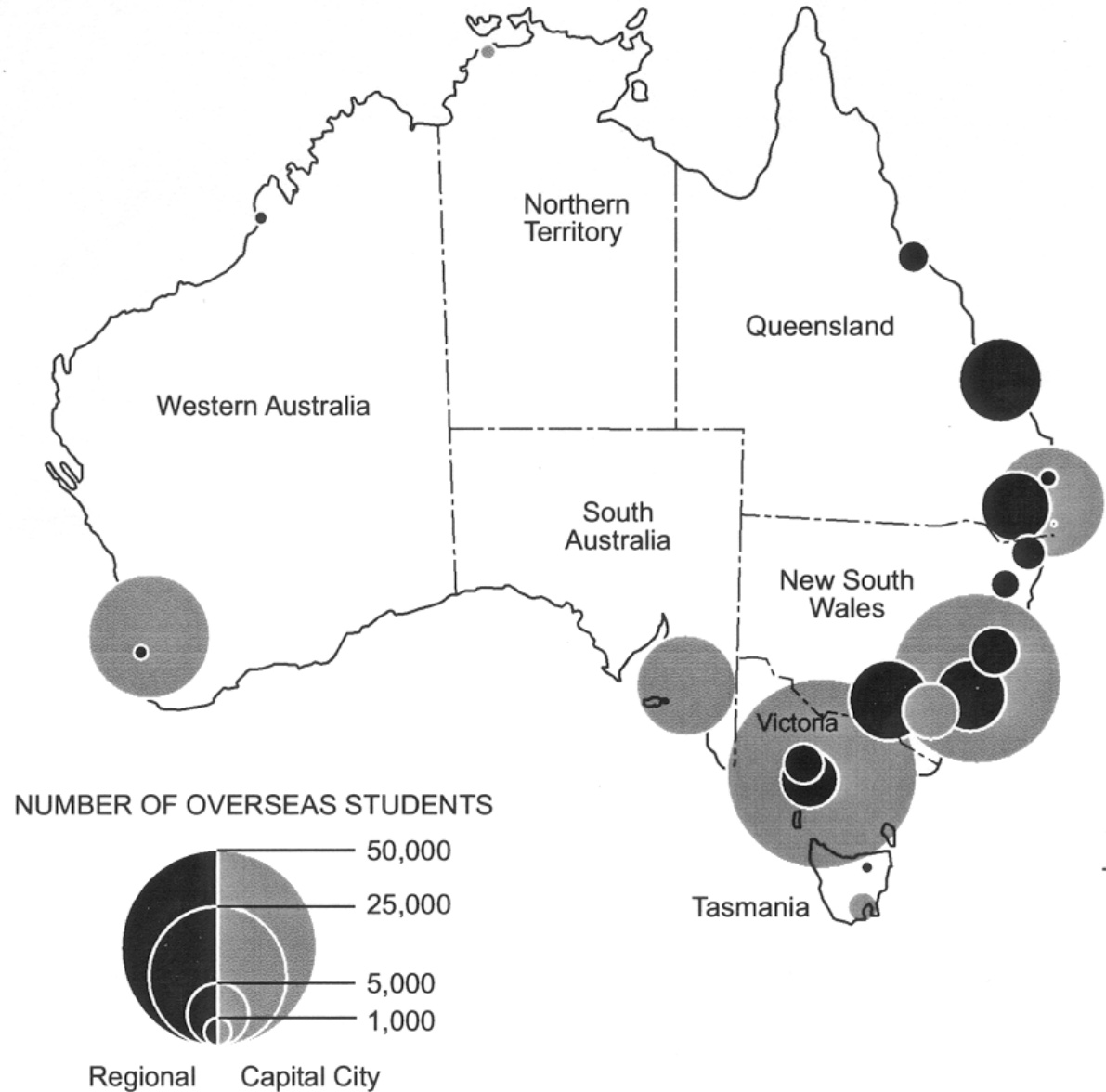
Source: Longitudinal Survey of Immigrants in Australia, DIMIA Unpublished Data

Location	Number in First Wave Detected in Third Wave	Percent Still in Region	Number Moved In	Number Moved Out
Sydney	22,059	95.9	1,093	178
Melbourne	13,646	94.8	882	714
Brisbane	4,522	89.1	368	494
Adelaide	2,586	85.1	170	385
Perth	6,146	95.2	191	296
Other New South Wales	367	60.8	508	144
Other Queensland	2,005	88.3	253	234
Other Victoria	569	18.3	189	465
Other	1,872	84.4	286	292

Note: Includes only migrants from the first wave who were detected in the third wave.

# Distribution of Foreign Students In Australia, 2002

Source: Department of Education, Science and Training Unpublished Data



# Temporary Business Entrants and Settler Arrivals in the Skill Visa Categories\* Compared

Source: Khoo *et al* 2003

	1999/2000	
	Temporary	Permanent
Total number	10,823	32,350
<i>Intended residence</i>		
NSW	52.3	42.7
Victoria	25.5	19.6
Queensland	9.0	12.1
SA	2.5	3.8
WA	7.4	20.1
Tasmania	0.5	0.3
NT	1.1	0.5
ACT	1.7	0.9

\* Include primary migrants and dependents. Skill visa categories include Independent Scheme, Business skills and (from 1997/98) Skilled Australian-linked.



# Net Interstate and Intrastate Migration, Capital City Statistical Division and Non-Metropolitan Areas, New South Wales, 1966-71 to 1996-2001

Source: Bell and Hugo 2000, 96; ABS 2001 Census (unpublished data)

Year	Metropolitan			Non-Metropolitan			Metropolitan Share of Interstate Gain or Loss (%)
	Intrastate	Interstate	Total	Intrastate	Interstate	Total	
New South Wales							
1966-71 <sup>1</sup>	-5,714	-4,609	-10,323	5,714	-15,460	-9,746	23.0
1971-76	-22,429	-48,373	-70,802	22,429	-25,530	-3,101	65.5
1976-81	-34,045	-23,849	-57,894	34,045	-388	33,657	98.4
1981-86	-26,652	-37,658	-64,310	26,652	-22,370	4,282	62.7
1986-91	-67,348	-71,374	-138,672	67,348	-22,120	45,238	76.3
1991-96	-33,659	-30,136	-63,795	33,659	-28,090	5,569	51.8
1996-2001	-34,811	-33,437	-58,248	34,525	-36,313	-1,788	47.9

# Net Interstate and Intrastate Migration, Capital City Statistical Division and Non-Metropolitan Areas, Victoria, 1966-71 to 1996-2001

Source: Bell and Hugo 2000, 96; ABS 2001 Census (unpublished data)

Year	Metropolitan			Non-Metropolitan			Metropolitan Share of Interstate Gain or Loss (%)
	Intrastate	Interstate	Total	Intrastate	Interstate	Total	
Victoria							
1966-71	20,998	-11,162	9,836	-20,998	-15,686	-36,684	41.6
1971-76	-5,865	-24,900	-30,765	5,865	-13,832	-7,967	64.3
1976-81	-18,514	-36,993	-55,507	18,514	-18,456	58	66.7
1981-86	-26,481	-27,335	-53,816	26,481	-12,243	14,238	69.1
1986-91	-29,118	-29,756	-58,874	29,118	-14,995	14,123	66.5
1991-96	-4,264	-45,118	-49,382	4,264	-31,024	-26,760	59.3
1996-2001	-2,035	13,054	11,019	1,842	-7,005	-5,103	65.1

# Net Interstate and Intrastate Migration, Capital City Statistical Divisions and Non-Metropolitan Areas, Queensland, 1966-71 to 1996-2001

Source: Bell and Hugo 2000, 96; ABS 2001 Census (unpublished data)

Year	Metropolitan			Non-Metropolitan			Metropolitan Share of Interstate Gain or Loss (%)
	Intrastate	Interstate	Total	Intrastate	Interstate	Total	
Queensland							
1966-71	13,456	4,076	17,532	-13,456	11,312	-2,144	26.5
1971-76	6,718	30,760	37,478	-6,718	34,640	27,922	47.0
1976-81	-2,481	31,011	28,530	2,481	52,445	54,926	37.2
1981-86	-9,811	29,064	19,253	9,811	58,957	68,768	33.0
1986-91	-3,035	45,752	42,717	3,035	79,047	82,082	36.7
1991-96	1,899	54,021	55,920	-1,899	88,142	86,243	38.0
1996-2001	18,869	33,813	52,682	-19,291	48,367	29,276	41.1

# Summary of Whether Net Intrastate and Interstate Migration are Assisting Deconcentration of Population From Capital City Statistical Divisions, Six States, 1996-2001

Source: ABS unpublished data

	Encouraging Concentration		Encouraging Deconcentration	
	Intrastate	Interstate	Intrastate	Interstate
New South Wales			X	X
Victoria		X	X	
Queensland	X			X
South Australia	X			X
Western Australia	X	X		
Tasmania	X	X		

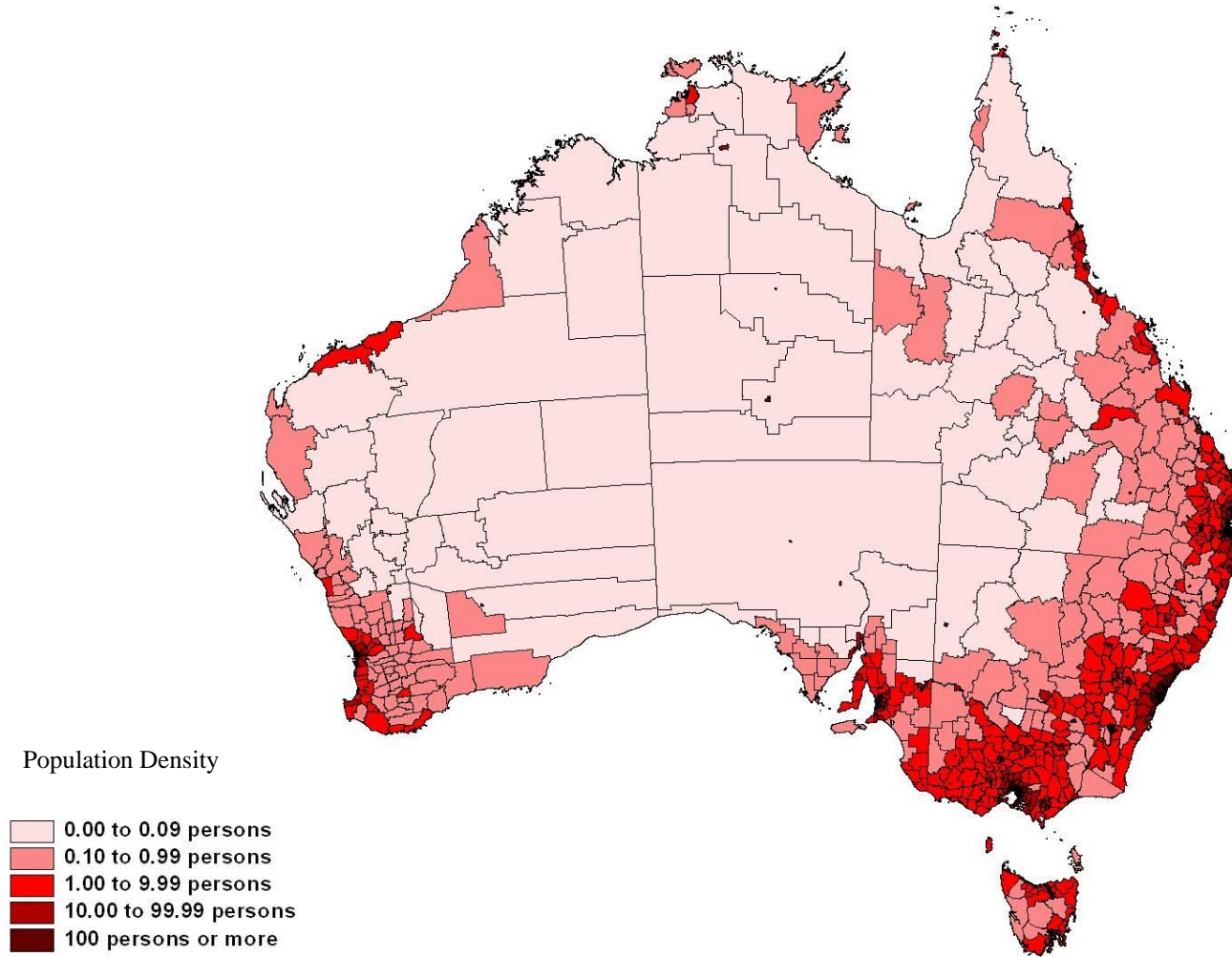
# Three Phases of Population Deconcentration In U.S.

(Long and Nucci 1997)

- From 1890 – 1910 corresponding with a period of extension of settlement into low population density areas;
- The 1970s – the era of turnaround;
- The 1990s – a third much weaker phase involving modest non-metropolitan growth.

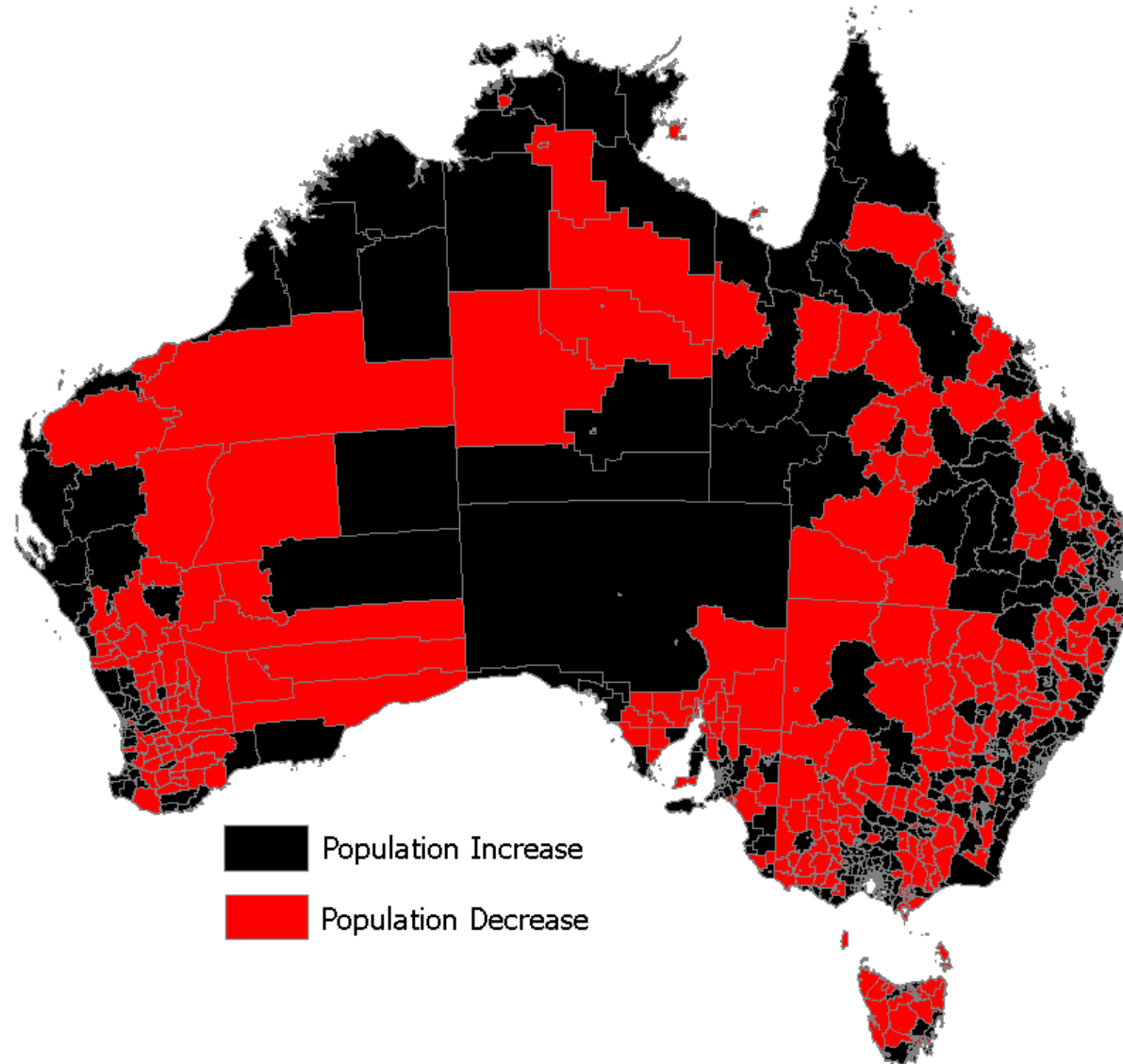
# Non-metropolitan Population Distribution

## Link between Population Density and Population Growth



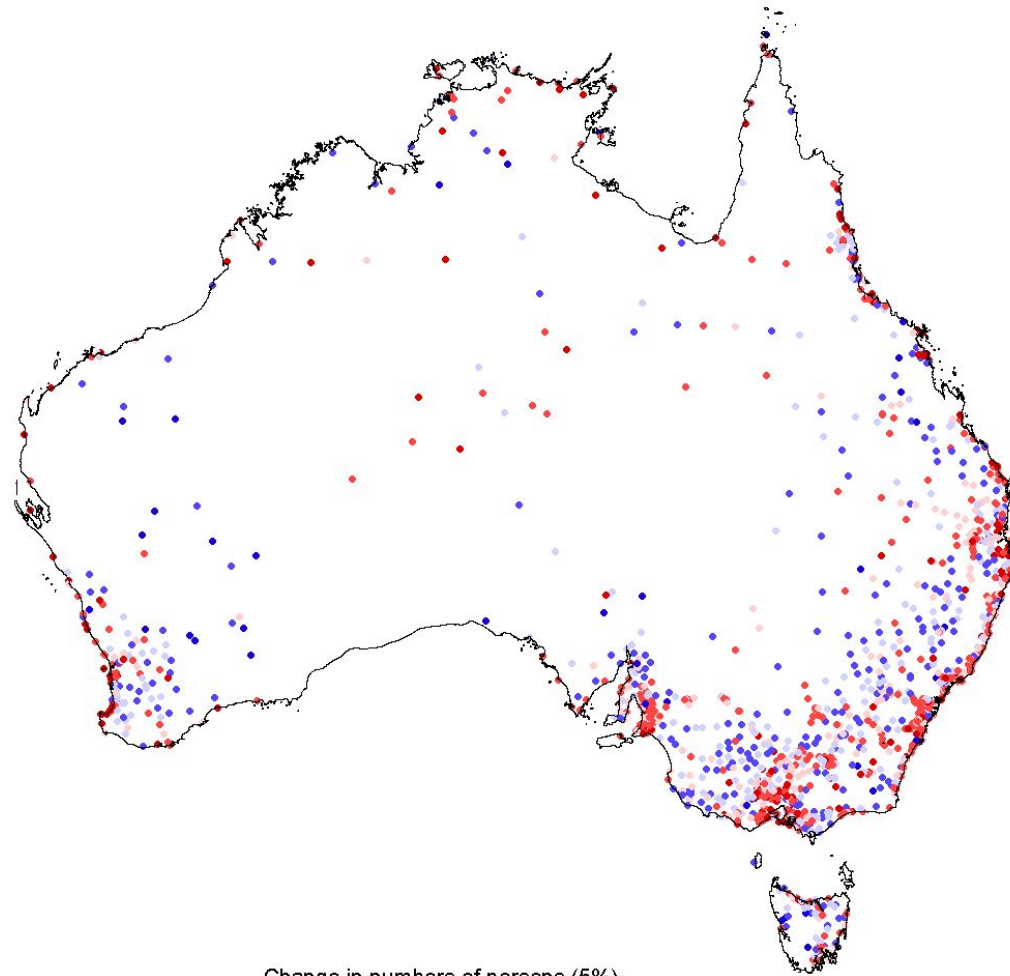
# Australia: Population Change, 1996-2001

Source: ABS 1996 and 2001 Censuses



# Australia: Population Change in Country Towns, 1996-2001

Source: Australian Censuses of 1996 and 2001



Change in numbers of persons (5%)

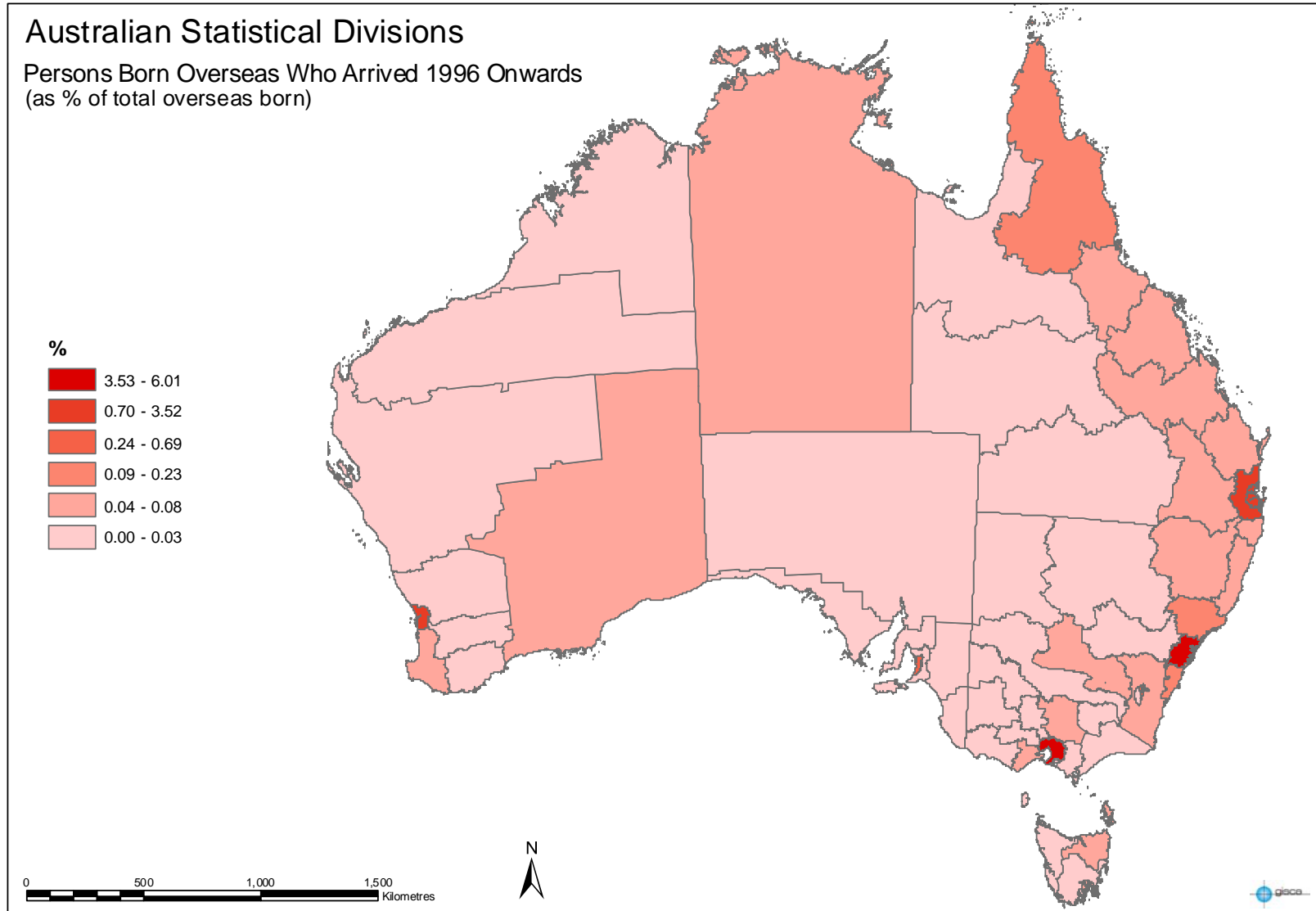
- 20% or greater
- 5 to 20% decrease
- 0 to 5% decrease
- 0 to 5% increase
- 5 to 20% increase
- 20% or greater increase



Produced by GISCA, April 2003

# Australian Statistical Divisions: Persons Born Overseas who Arrived 1996 Onwards (as % of total overseas born)

Source: Derived from ABS 2001 Population Census



# Australian Non-Metropolitan Areas: Population Growth by Level of Accessibility, 1991-96 and 1996-2001

Source: Glover *et al.* 1999; ABS 2001 Census calculations, ABS 2003a, 46

Level of Accessibility	Rate of Population Growth (%)		Population Density Persons per km <sup>2</sup>		Percent of all Farming Families
	1991-96	1996-2001	1996	2001	2001
Highly accessible	6.2	6.6	77.2	80.0	5.9
Accessible	5.1	3.7	4.1	4.1	33.8
Moderately accessible	3.6	1.5	1.0	1.0	46.3
Remote	1.2	-1.0	0.2	0.2	10.7
Very remote	2.9	4.5	0.0	0.1	3.2
<b>Total</b>	<b>5.8</b>	<b>6.0</b>	<b>2.3</b>	<b>2.5</b>	<b>100.0</b>

Notes:

1. All calculations are made on the basis of SLA values aggregated to the accessibility categories.
2. The accessibility classification is based on the updated ARIA+ classification for the 2001 ASGC. Because the breakpoints between categories for the 2001 version have changed since the original ARIA, the breakpoints for the table above were adjusted to be concordant with the 1996-2001 table.
3. The population density data is based on Table B01 of the Basic Community Profile for 2001. The population change data is based on time series population estimates adjusted to the 2001 boundaries.

# ARIA Regions: Breakdown According to Birthplace 2001

Source: ABS 2001 Census, unpublished data

	Australian Born		Overseas Born		Recent Arrivals		Longstanding		Total	
	No.	%	No.	%	No.	%	No.	%	No.	%
High Accessible	8,277,638	60.8	3,409,007	83.1	584,010	88.9	2,824,997	82.0	11,686,645	65.9
Accessible	3,243,451	23.8	431,684	10.5	41,855	6.4	389,829	11.3	3,675,135	20.7
Moderately										
Accessible	1,657,550	12.2	208,909	5.1	23,444	3.6	185,465	5.4	1,866,459	10.5
Remote	276,797	2.0	34,999	0.9	5,114	0.8	29,885	0.9	311,796	1.8
Very Remote	168,341	1.2	19,458	0.4	2,727	0.3	16,731	0.4	187,799	1.1
Total	13,623,777	100.0	4,104,057	100.0	657,150	100.0	3,446,907	100.0	17,727,834	100.0

# Population in ABARE Settlement Categories

Source: Haberkorn *et al.* 2004, 5, 6

Settlement Category	Population Density Per/km	Average Annual Population Growth 1996-2001
Metropolitan	321.3	1.3
Non-Metropolitan	0.9	0.8
Regional City	177.5	1.6
Populated Coastal	6.7	0.9
Populated Inland	2.3	0.3
Remote	0.1	0.5
Australia	2.5	1.1

# Australia Population Living Within 50km of Coastline

---

Year	Number	Percent
1991	13,459,212	79.9
2001	15,385,551	81.1

---

# New South Wales: Regions, Internal Migration 1996-2001 and Immigrants Who Arrived in Australia Between 1996 and 2001

Source: Unpublished data from 2001 Australian Census

---

	Internal Migration 1996-2001			Immigrants Arrived
	In	Out	Net	1996-2001
Sydney	175,732	233,685	- 57,953	233,685
Coastal NSW	189,277	158,174	+ 31,053	18,848
Central NSW	91,899	95,028	- 3,129	6,315
Western NSW	40,489	66,292	- 25,803	2,498

---

# Metropolitan Statistical Divisions: Internal Migration, 1996-2001

Source: Unpublished Data from 2001 Census

---

Statistical Division	In Migration	Out Migration	Net Migration
Sydney	175,732	233,685	- 57,953
Melbourne	169,710	157,343	+ 12,367
Brisbane	186,035	132,914	+ 53,121
Adelaide	74,450	77,245	- 2,795
Perth	100,290	89,695	+ 10,595
Hobart	19,540	19,907	- 367
Canberra	43,808	36,102	+7,706

---

## Non-Metropolitan Statistical Divisions Experiencing Net Migration Gains in 1996-2001

Source: Unpublished Data from Australian 2001 Population Census

New South Wales				
Hunter	59,527	51,190	8,337	Coastal/Metropolitan Periphery
Illawara	46,897	36,055	10,892	Coastal/Metropolitan Periphery
Richmond Tweed	36,057	30,810	5,265	Coastal
Mid North Coast	46,728	40,119	6,609	Coastal
Central West	22,627	19,460	3,167	Metropolitan Periphery
South East	33,487	31,071	2,396	Coastal
Victoria				
Barwon	27,425	21,975	5,450	Metropolitan Periphery
Central Highlands	19,971	17,898	2,073	Metropolitan Periphery
Loddon	23,904	21,537	2,367	Metropolitan Periphery
Queensland				
Moreton	138,831	84,634	54,197	Coastal/Metropolitan Periphery
Wide Bay-Burnett	40,282	39,286	996	Coastal
Darling Downs	33,348	32,412	996	Adjoining Coastal
Northern	33,188	31,410	1,778	Coastal
South Australia				
Outer Adelaide	23,593	18,556	5,037	Coastal/Metropolitan Periphery
Western Australia				
South West	34,196	22,718	11,478	Coastal/Metropolitan Periphery
Northern Territory				
Darwin	23,900	20,746	3,154	Coastal North

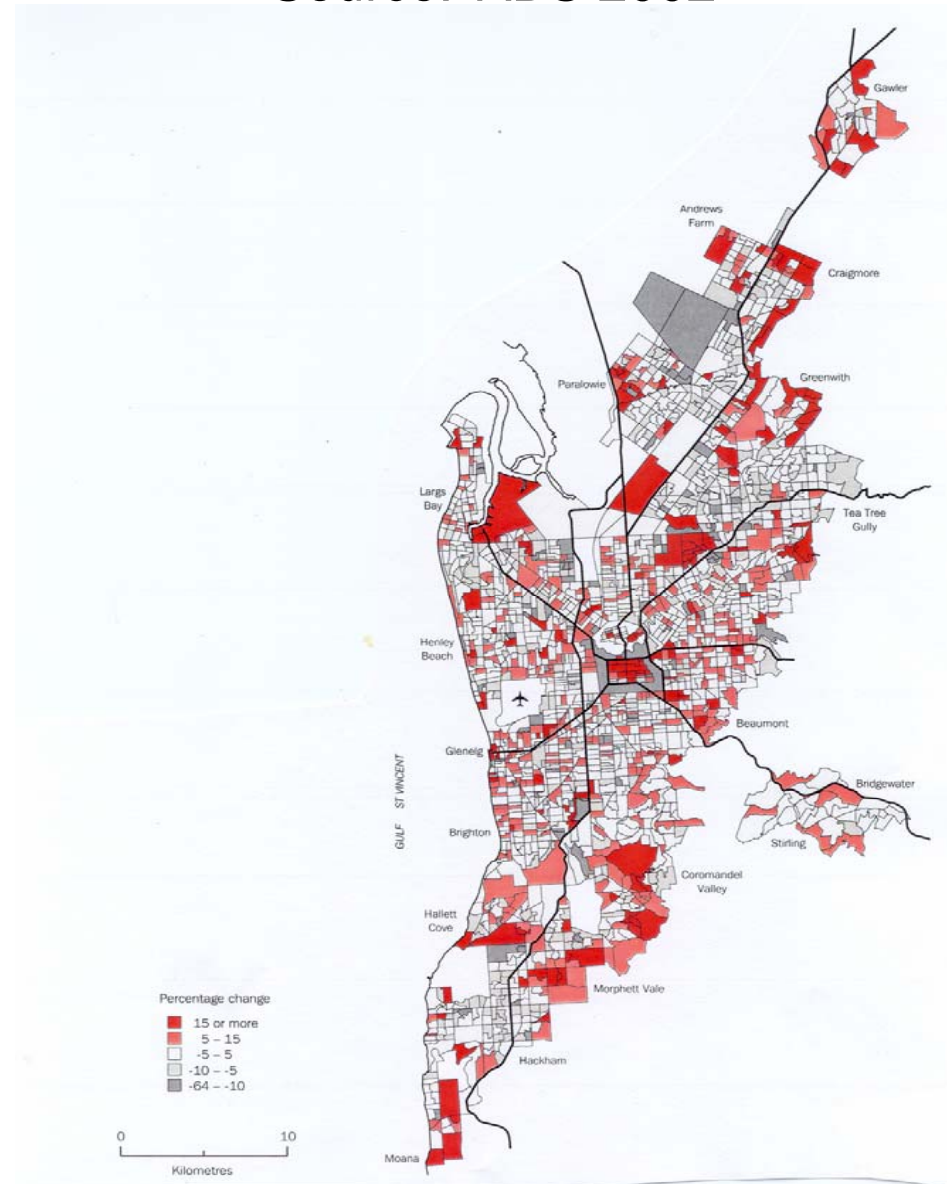
# Australia, States and Territories: Net Interstate Migration, 1966-71 to 1996-2001

Source: Bell and Hugo 2000; ABS unpublished data

Interval	State/Territory							
	NSW	Vic	Qld	SA	WA	Tas	NT	ACT
1966-71	-20,069	-26,848	15,388	-16,865	22,564	-6,810	8,816	23,824
1971-76	-74,010	-38,736	65,438	6,247	19,625	-4,044	-875	26,357
1976-81	-24,470	-55,420	83,558	-14,809	10,597	-4,515	4,458	601
1981-86	-61,736	-39,431	87,802	-8,679	15,703	-2,107	3,665	4,783
1986-91	-93,444	-44,751	124,799	-4,282	16,166	-175	-3,650	5,337
1991-96	-58,796	-78,628	145,459	-18,291	17,281	-6,251	-670	-104
1996-2001	-59,760	7,189	82,382	-10,588	2,584	-13,067	-5,573	-3,187

# Adelaide: Percentage Change in Population Between the 1996 and 2001 Censuses

Source: ABS 2002



# Inner City Growth (Percent Per Annum)

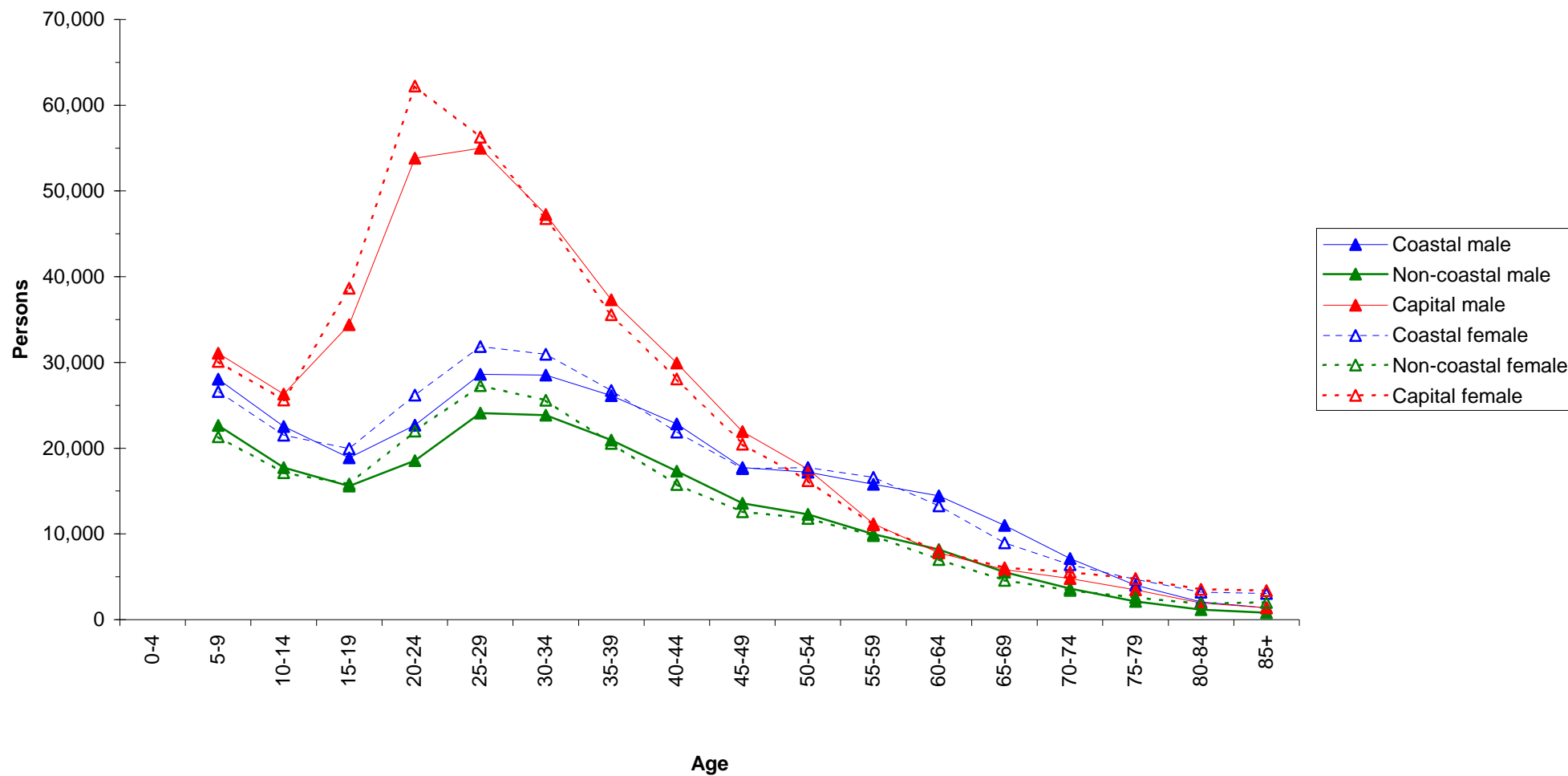
Source: ABS Censuses, ABS 2004

	1981-1986	1998-2003	2002-2003
Sydney (c)	0.9	4.9	5.9
Melbourne (c)	-0.8	6.1	7.9
Brisbane (c)	0.5	2.0	2.3
Adelaide (c)	2.3	1.5	1.8
Perth (c)	0.0	8.7	7.2
Hobart (c)	-0.2	0.4	1.2
Darwin (c)	3.6	-0.2	-0.2

# Inmigration Comparison, 1996-2001

Source: ABS 1996 and 2001 Censuses

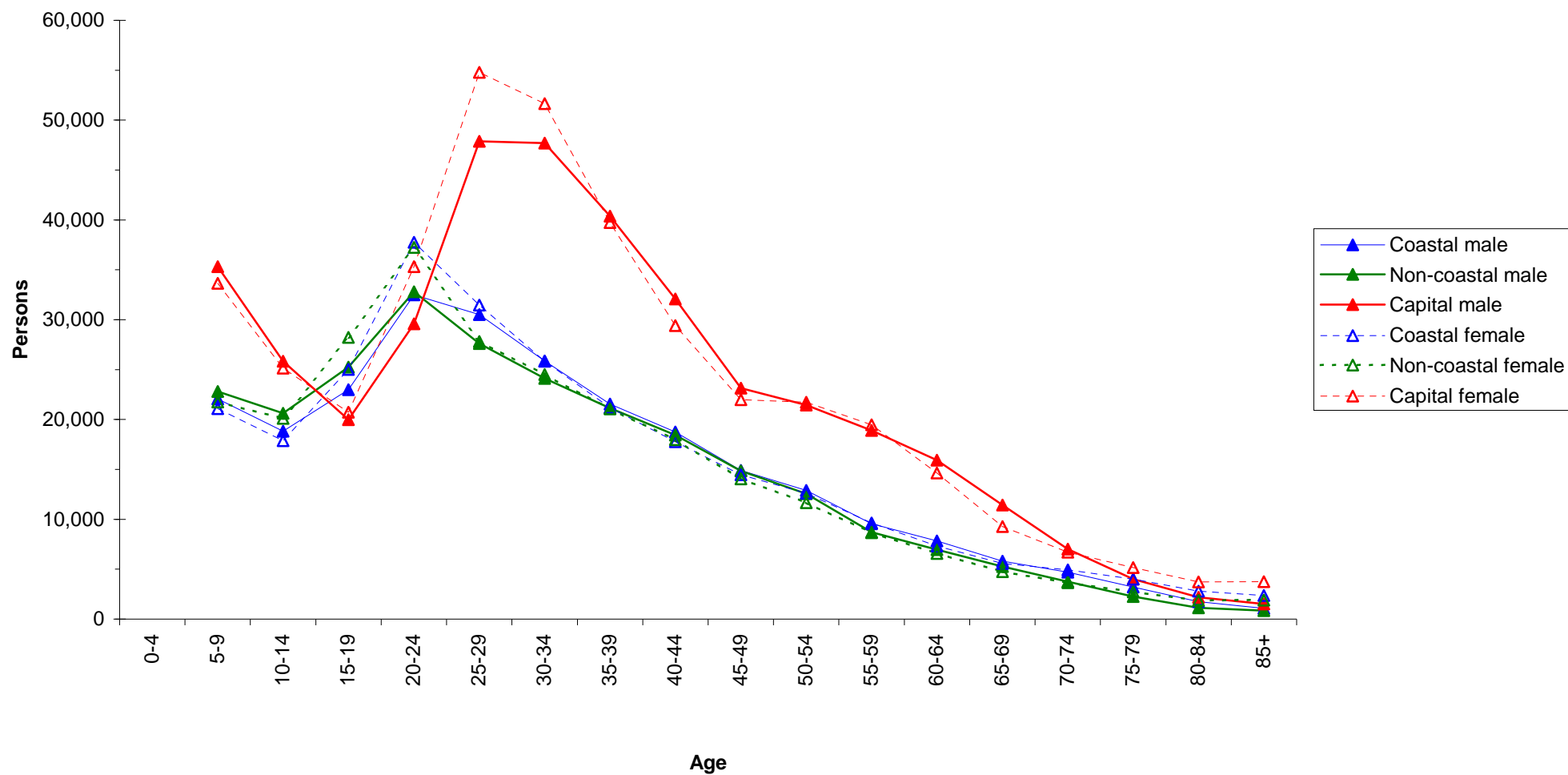
Inmigration comparison (1996-2001)



# Outmigration Comparison, 1996-2001

Source: ABS 1996 and 2001 Censuses

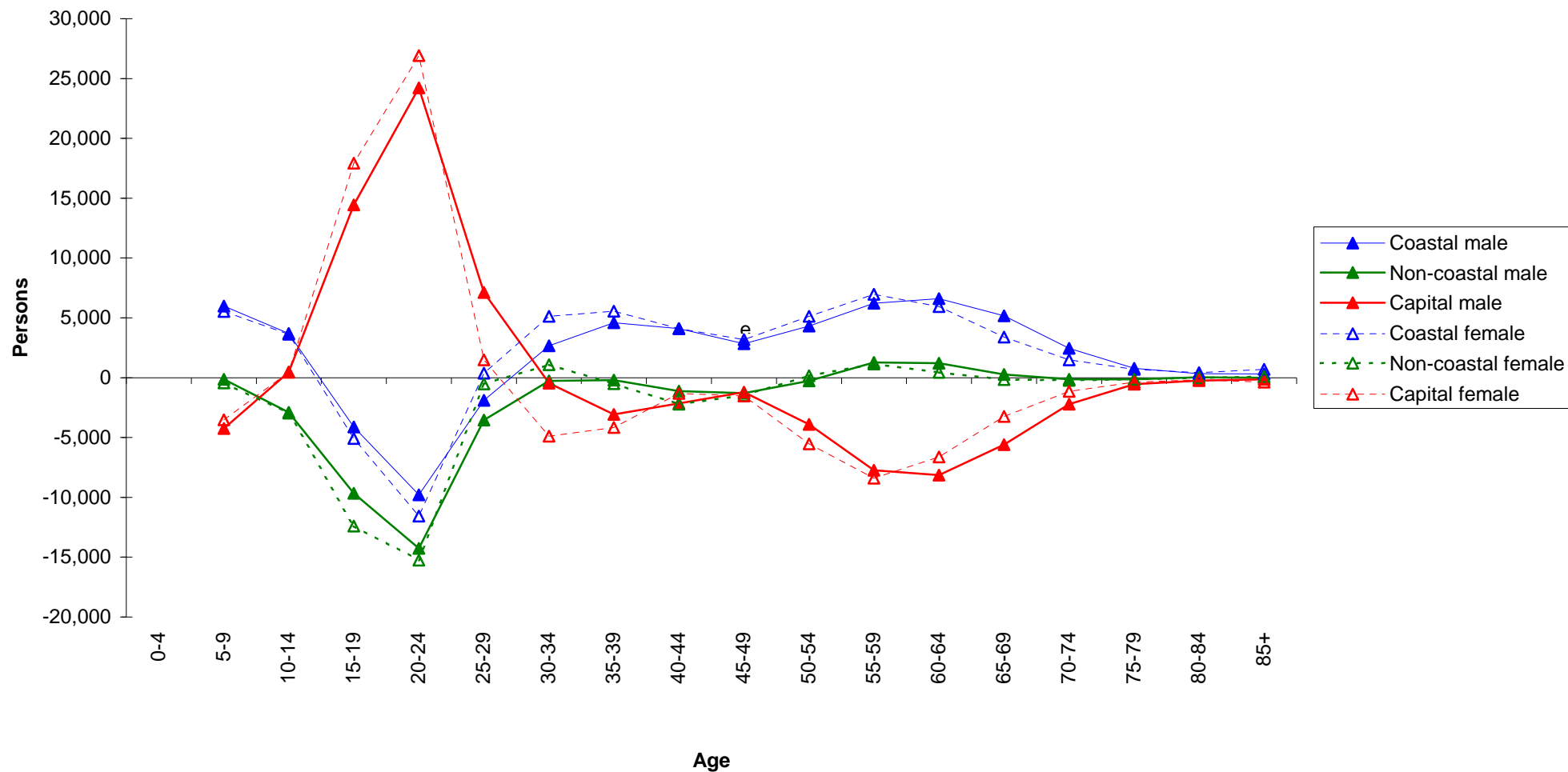
## Outmigration comparison (1996-2001)



# Net Migration Comparison, 1996-2001

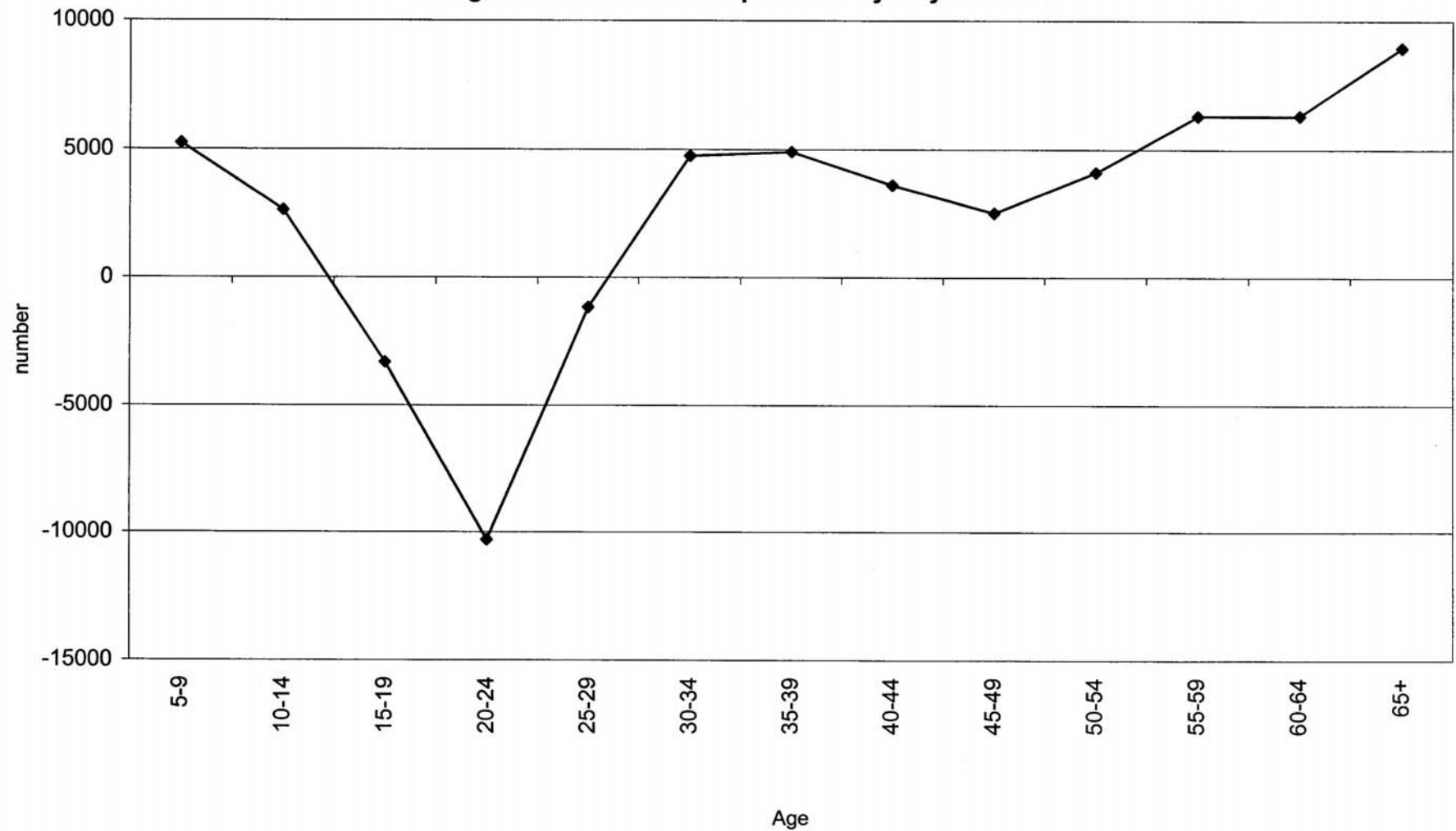
Source: ABS 1996 and 2001 Censuses

### Net migration comparison (1996-2001)



# Age Sex Profile of Net Migration Between Non-Metropolitan NSW and Sydney

Source: ABS 1996 and 2001 Censuses



# Average Annual Growth of Age Groups 1996-2001 (Percent Per Annum)

Source: Haberkorn *et al.* 2004

	Youth	Working Age	65+	75+	Change in Median Age (yrs)
Metropolitan	+0.4	7.0	9.4	21.1	+1
Non-metropolitan	-1.3	4.6	11.4	23.8	+3
Regional City	+0.9	8.5	11.4	28.5	+2
Populated Coastal	-0.5	4.9	12.9	25.5	+3
Populated Inland	-2.4	2.1	9.5	19.0	+2
Remote	-6.7	2.8	14.7	21.9	+2
Australia	-0.2	6.1	10.2	21.5	+1

# Older Population 2001

Source: Haberkorn *et al.* 2004

---

	Percent 65+	Percent 75+	Median Age 2001	Elderly Dependency Ratio (%)
Metropolitan	11.9	5.6	34	17.5
Non-metropolitan	13.9	6.2	37	21.8
Regional City	14.8	6.8	36	22.8
Populated Coastal	15.1	6.5	38	24.1
Populated Inland	13.3	6.1	36	20.9
Remote	8.7	2.9	33	12.8
Australia	12.8	5.8	35	19.0

---

# Population 2001

	% Indigenous	% Recent Migrants	% With Degree	% Low Income Households	% Receiving Labour Market Benefit
Metropolitan	2.2	4.6	15.5	12.6	5.3
Non-metropolitan	4.1	1.3	8.4	16.3	6.9
Regional City	2.2	2.5	9.5	15.3	7.0
Populated Coastal	3.2	0.9	7.6	17.3	8.0
Populated Inland	2.9	0.8	8.3	16.6	5.8
Remote	20.4	1.5	7.9	13.3	6.6
Australia	2.2	3.4	12.3	13.9	5.9

# Labour Force 2001

	Labour Force Participation	Percent Mothers in Work Force	Unemployment	Unemployed 45+	Percent in Primary Industry
Metropolitan	61.8	63.4	6.8	4.7	1.2
Non-metropolitan	57.6	62.3	8.4	5.7	12.0
Regional City	57.1	63.2	9.5	6.6	2.1
Populated Coastal	54.6	60.8	9.9	7.0	10.6
Populated Inland	59.9	63.5	7.0	4.4	16.8
Remote	61.9	59.9	5.5	4.1	26.2
Australia	60.3	63.1	7.4	5.1	4.9

# Attempts to Influence Population Distribution

- Decentralisation (Internal Migration)
- Regional Migration Schemes

# Decentralisation

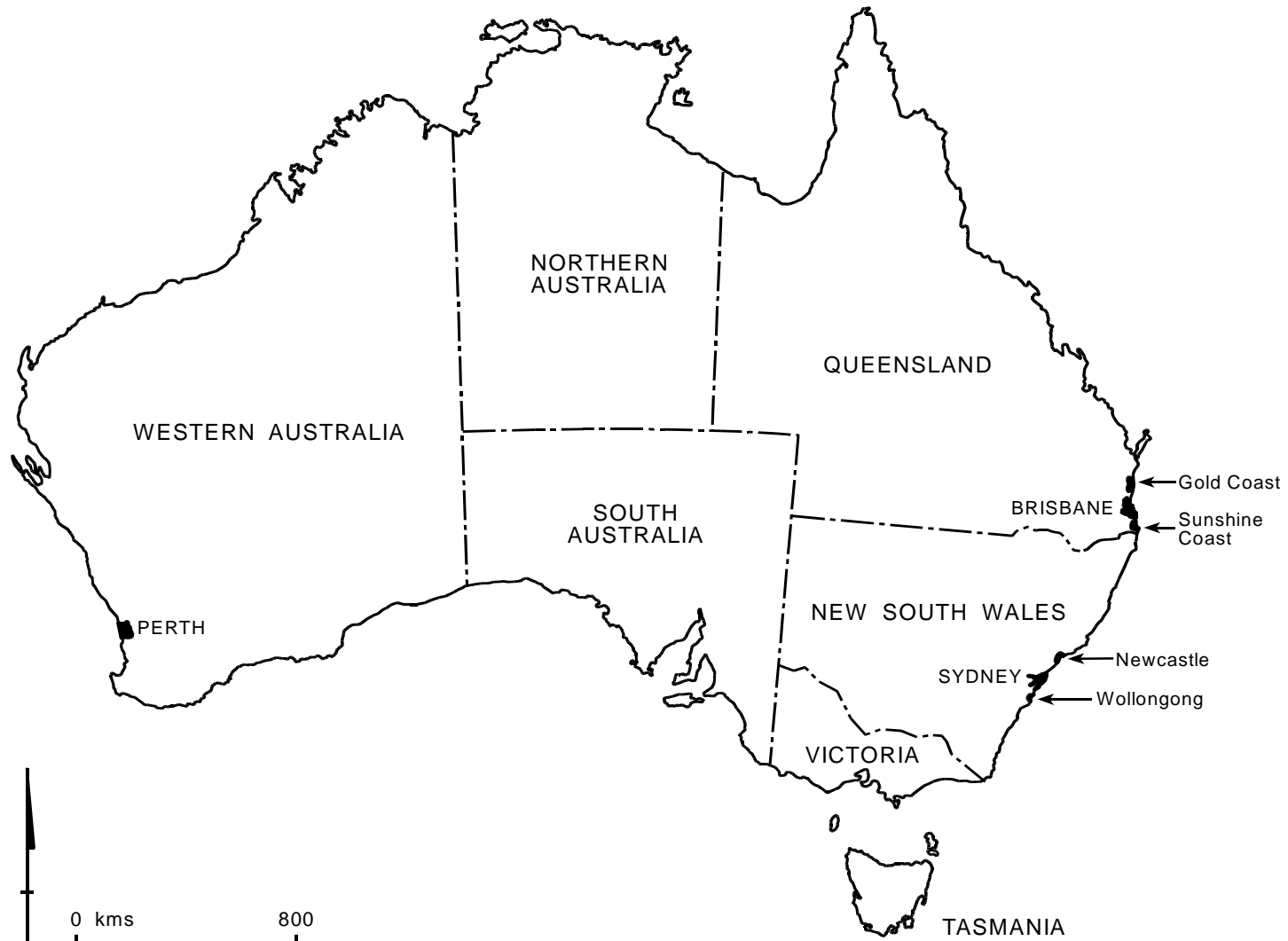
- Attempts to make peripheral areas more attractive.
- Attempts to charge people the “real costs” of settling in areas deemed to be crowded.

# State Specific and Regional Migrations Schemes

- New Era
- 1996 Working Party on Regional Migration
- Increasing Suite of Schemes
- Recent DIMIA Taskforces with NSW, Victoria and SA Governments

# WHAT IS REGIONAL?

**Australia: Designated Areas Currently Attracting a Disproportionate Share of Incoming Migrants**



# Pressures

- Sydney problems blamed on population growth and immigration by Premier.
- Regional Issues : 2 elements
  - Eastern States Vs Peripheral States
  - Metropolitan Vs Non Metropolitan

# Mechanisms

- Bonuses in Points System.
- Allowing employers, state/territory governments, relatives to sponsor skilled migrants.
- Providing regional certifying bodies a greater role.
- Relaxing some of requirements (e.g. minimum salary).

# Outcomes of State Specific and Migration Schemes 1998-2003

---

Year	Number of Migrants	Percent of Intake
1998-99	2,804	3.3
1999-2000	3,309	3.6
2000-01	3,846	3.6
2001-02	4,136	4.7
2002-03	7,941	8.5

---

# Where Are They Going?

Source: Birrell 2003

## 2001-03

Capital Cities

90 percent

Sydney

37 percent

Melbourne

25 percent

Adelaide

13 percent

# Conclusion

- Broad Outlines of Population Distribution Fixed
- Within These Dynamic
- New Types of Settlement Evolving
- Need to Examine Implications
  - Environmental
  - Equity
  - Economic